

ENGINEER

ARCHITECTURAL SEAL

DATE ISSUE

DATE	REVISION	NAME
09/18/19	PERMIT / OWNER	

PROJECT NAME / LOCATION  
**five BELOW**  
 NORTH LAKELAND  
 919 LAKELAND PARK CENTER DRIVE  
 LAKELAND, FL 33809

PROJECT INFORMATION  
 DATE: SEPTEMBER 18, 2019  
 PROJECT NO. 190636  
 DELIVERY TYPE: AS-IS

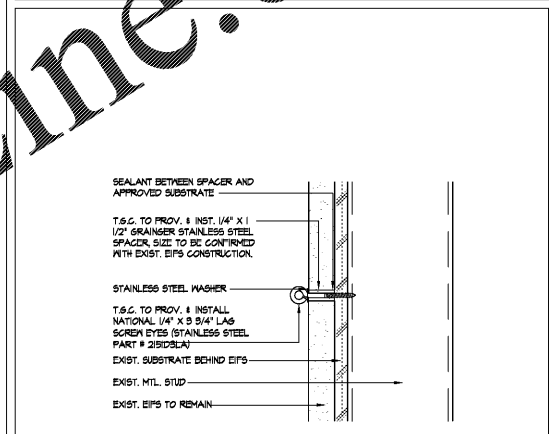
DRAWN: JTB  
 CHECKED: JDM

SHEET TITLE / NUMBER  
 EXTERIOR ELEVATIONS

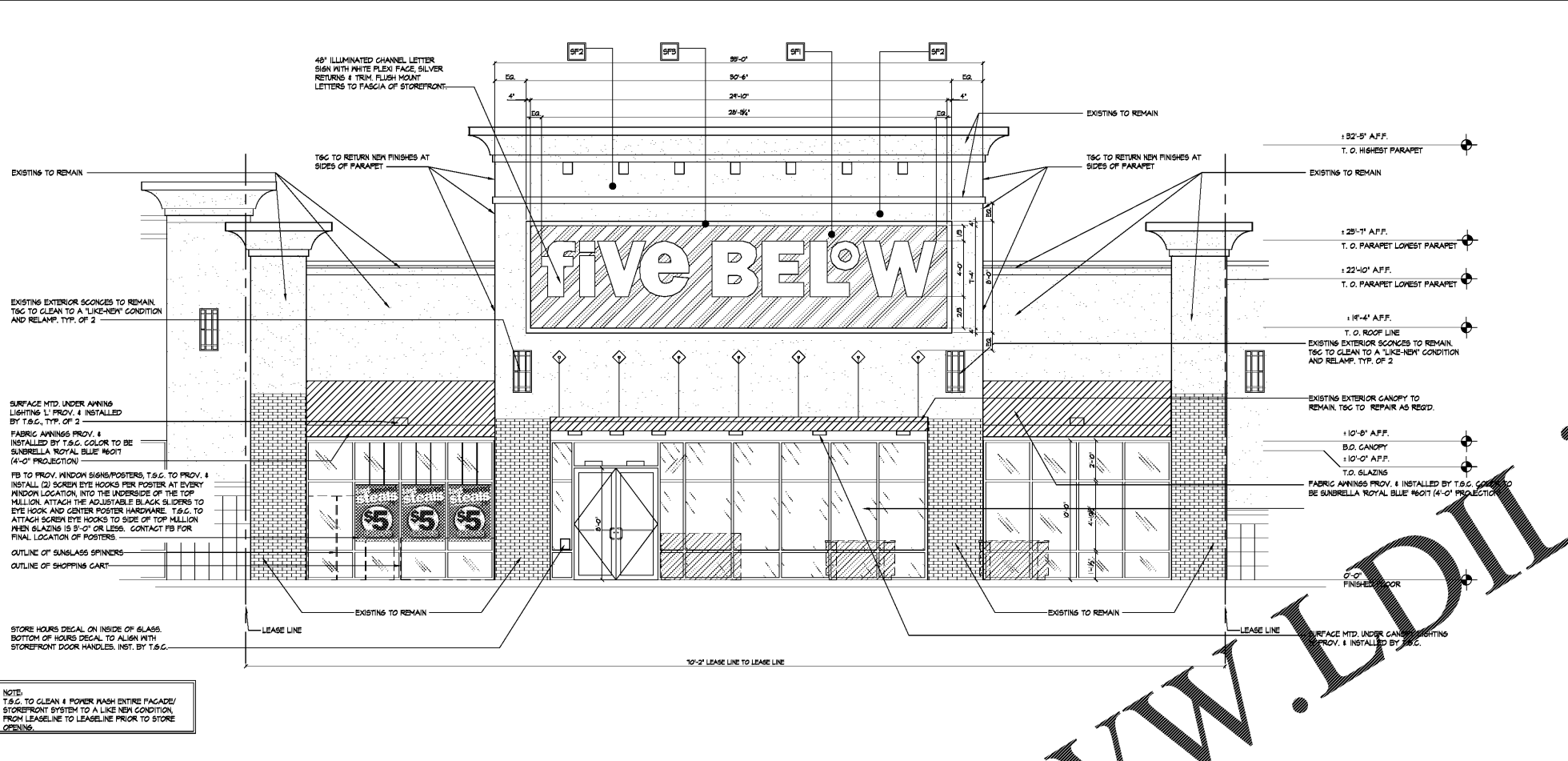
A4.0

SP	STOREFRONT EPS SYSTEM	DRY-VIT INSULATION PLUS MD	FIVE BELOW BLUE SIGNAGE EPS	FIRE-0102B	BY T.S.G.
SP1	1" MIN. DEPTH	DRY-VIT INSULATION PLUS MD	1/2" 'CRYSTAL SHELL' PRIMARY FACADE	FIRE-07102	BY T.S.G.
SP2	2" MIN. DEPTH	DRY-VIT INSULATION PLUS MD	1/2" 'CHINA WHITE' FRAME AROUND BLUE	FIRE-08102	BY T.S.G.
SP3	STOREFRONT EPS 2"x4" FRAME	DRY-VIT INSULATION PLUS MD	FIVE BELOW BLUE	HEU BLUE	BY T.S.G.
SP4	1" MIN. EPS CORNICE	ALPOLIC OR SIM.	BRUSHED CLEAR ANODIZED	N/A	BY T.S.G.
SP5	STOREFRONT BRAKE METAL BASE CLADDING	ALPOLIC OR SIM.			

3 FINISHES LEGEND / NOTES



A BANNER HANG'G DTL. SCALE: 3/4" = 1'-0"



1 EXTERIOR ELEVATIONS SCALE: 1/4" = 1'-0"



2 EXTERIOR ELEVATIONS SCALE: 1/4" = 1'-0"

4 OPEN

NOTE:  
 T&G TO CLEAN & POWER WASH ENTIRE FACADE/  
 STOREFRONT SYSTEM TO A LIKE NEW CONDITION  
 FROM LEASELINE TO LEASELINE PRIOR TO STORE  
 OPENING.

NOTE:  
 ALL SIGNS UNDER SEPARATE PERMIT APPLICATION.

NOTE:  
 T&G TO CLEAN & POWER WASH ENTIRE FACADE/  
 STOREFRONT SYSTEM TO A LIKE NEW CONDITION  
 FROM LEASELINE TO LEASELINE PRIOR TO STORE  
 OPENING.