

ENGINEER

ARCHITECTURAL SEAL

DATE ISSUE

DATE REVISION

DATE	REVISION	OWNER	NAME
09/18/19	PERMIT		

PROJECT NAME / LOCATION

FIVE BELOW
 NORTH LAKELAND
 919 LAKELAND PARK CENTER DRIVE
 LAKELAND, FL 33809

PROJECT INFORMATION

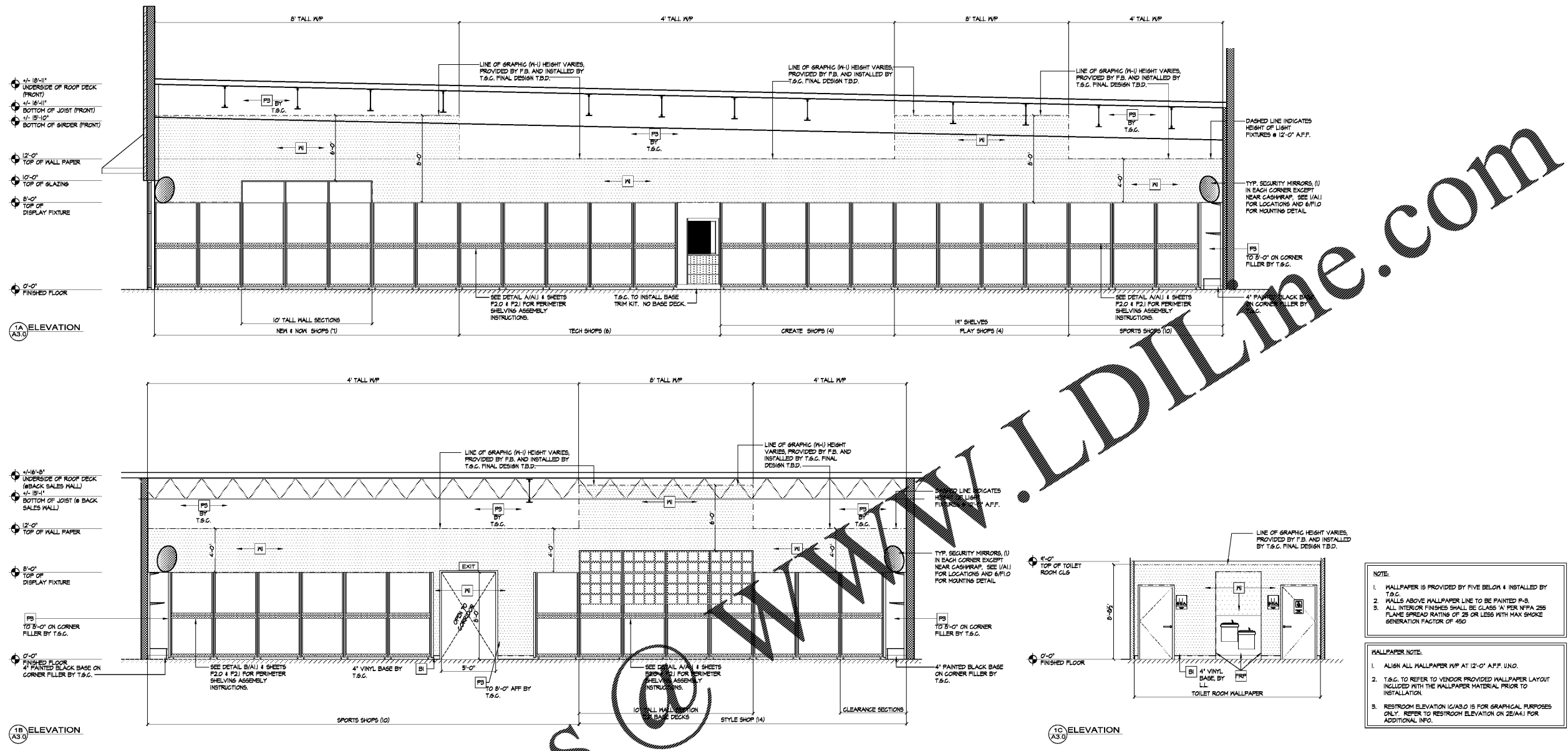
DATE: SEPTEMBER 18, 2019
 PROJECT NO.: 190636
 DELIVERY TYPE: AS-IS

DRAWN: JTB
 CHECKED: JDM

SHEET TITLE / NUMBER

INTERIOR ELEVATIONS

A3.0



NOTE:

1. WALLPAPER IS PROVIDED BY FIVE BELOW & INSTALLED BY T.S.G.
2. WALLS ABOVE WALLPAPER LINE TO BE PAINTED P-8.
3. ALL INTERIOR FINISHES SHALL BE CLASS 'A' PER NFPA 255 FLAME SPREAD RATING OF 25 OR LESS WITH MAX SMOKE GENERATION FACTOR OF 450

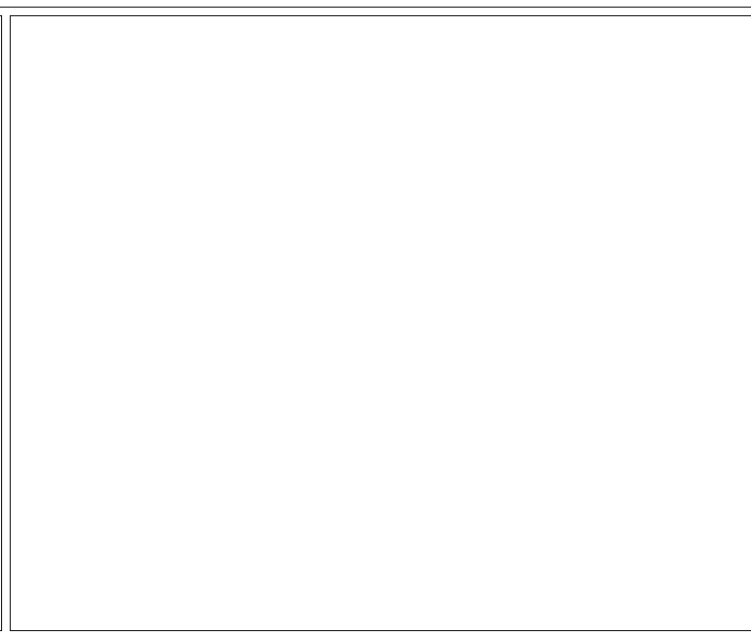
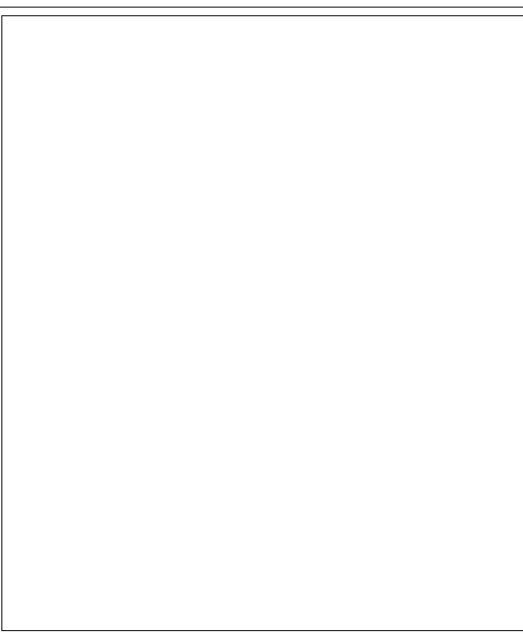
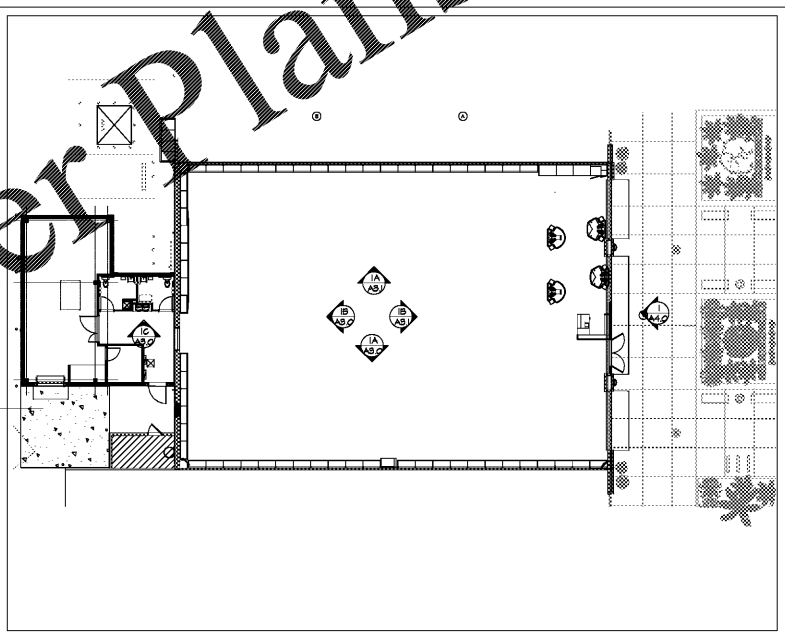
WALLPAPER NOTE:

1. ALIGN ALL WALLPAPER W/P AT 12'-0" A.F.F. UNO.
2. T.S.G. TO REFER TO VENDOR PROVIDED WALLPAPER LAYOUT INCLUDED WITH THE WALLPAPER MATERIAL PRIOR TO INSTALLATION.
3. RESTROOM ELEVATION (A3.0) IS FOR GRAPHICAL PURPOSES ONLY. REFER TO RESTROOM ELEVATION ON 2E(A.1) FOR ADDITIONAL INFO.

SCALE: 1/4" = 1'-0"

INTERIOR ELEVATIONS

FINISH	DESCRIPTION / MATERIAL	MANUFACTURER	SPEC / FINISH	COLOR #
F1	POLISHED CONCRETE OVER (1) CONCRETE SLAB	QUESTMARK CONG. POLISHING SYSTEM	SALES AREA CORRIDOR AREA	N/A
F2	12" x 12" x 1/8" VGT	ARMSTRONG	FIELD GRAY / 995 9-95 ADHESIVE	9421
F3	POLISHED CONCRETE OVER (1) CONCRETE SLAB	QUESTMARK CONG. POLISHING SYSTEM	STOCK ROOM AREA	N/A
F4	18" x 18" x 1/8" LUXURY VINYL TILE (LVT)	TANBUS CENTIVA	CONTOUR SOAPSTONE	9012
F5	6" x 62.5" x 1/8" INLAID SHEET VINYL FLOORING	ARMSTRONG	WHITE CLIFFS DEGO ART - CONLON	98702
F6	12" x 12" x 5/16" CERAMIC TILE	DELTA TILE	1/4" GROUT - ALABASTER	GH25 (?)
F7	4" VINYL BASE	ARMSTRONG	JET BLACK	V4860
C1	MIL/WOOD DECK - OPEN TO JOISTS ABOVE - NO HANG CLS	SHERWIN WILLIAMS	WATERBORNE DRYFALL LOW VOC - FLAT SHE	1000
C2	24" x 48" ACOUSTIC CEILING SYSTEM	ARMSTRONG	CORTESA	
C3	8YPSUM BOARD CEILING LEVEL 9 FINISH	SHERWIN WILLIAMS	PRIMAR 200 ZERO VOC DRYFALL SHEEN	SW-1005
P1	PURE WHITE PAINT	SHERWIN WILLIAMS	PRIMAR 200 ZERO VOC DRYFALL SHEEN	SW-1005
P2	PURE WHITE PAINT	SHERWIN WILLIAMS	PRIMAR 200 ZERO VOC DRYFALL SHEEN	SW-1005
P3	PURE WHITE PAINT	SHERWIN WILLIAMS	PRIMAR 200 ZERO VOC DRYFALL SHEEN	SW-1005
P4	VISION UNMATED GRAPHICS	CUSTOM		N/A
SF1	STOREFRONT EIFS SYSTEM 1" MIN. DEPTH	DRYVIT	OUTSULATION PLUS MD	FIBE-01025
SF2	STOREFRONT EIFS SYSTEM 2" MIN. DEPTH	DRYVIT	OUTSULATION PLUS MD	FIBE-01021
SF3	STOREFRONT EIFS 2 1/4" FRAME	DRYVIT	OUTSULATION PLUS MD	FIBE-06102
SF4	STOREFRONT BRAKE METAL	ALPOLIC OR SIM.	FIVE BELOW BLUE	VEU BLUE
SF5	STOREFRONT BRAKE METAL BASE CLADDING	ALPOLIC OR SIM.	BRUSHED CLEAR ANODIZED	N/A



A FINISHES LEGEND/ NOTES

B KEY PLAN

C OPEN

D OPEN