

ENGINEER

ARCHITECTURAL SEAL

DATE ISSUE

09/18/19 PERMIT / OWNER

DATE REVISION NAME

PROJECT NAME / LOCATION

**five below**

NORTH LAKELAND  
919 LAKELAND PARK CENTER DRIVE  
LAKELAND, FL 33809

PROJECT INFORMATION

DATE: SEPTEMBER 18, 2019  
PROJECT NO. 190636  
DELIVERY TYPE: AS-IS

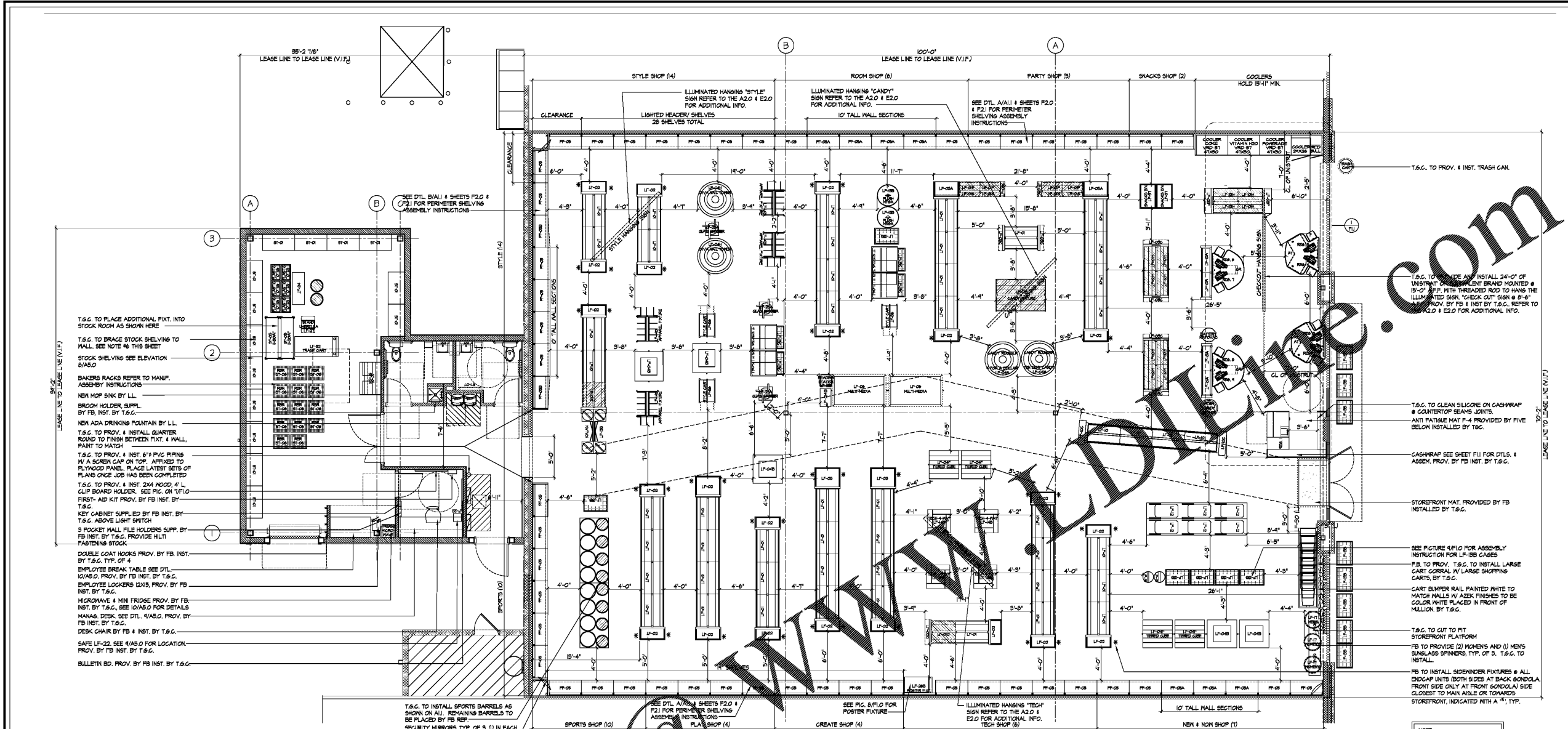
DRAWN: JTB

CHECKED: JDM

SHEET TITLE / NUMBER

FIXTURE PLAN

**A1.1**



- NOTE: ALL MILLWORK SHELVING AND DESKS TO BE PROVIDED BY FIVE BELOW AND INSTALLED BY T.S.G.
- NOTE: WALL FIXTURE FASTENING DETAILS T.S.G. MUST FOLLOW PROPER BLOCKING, FASTENING, & SPACING PER MANUFACTURING SPECS ON SHEET P2.0
- NOTE: SEE INTERIOR ELEVATIONS SHEETS ON AS.0 & AS.1 FOR WALLPAPER GRAPHIC LOCATIONS
- NOTE: MAINTAIN A CLEAR EXIT PATH (MIN. 3'-0" BETWEEN TWO EXIT DOORS)
- NOTE: T.S.G. TO ONLY INSTALL PERIMETER SHELVING AS SHOWN ON DTL. A & B ON THIS SHEET. T.S.G. TO LEAVE REMAINING SHELVING PALLETIZED AND IN BOXES. PLACE PALLETS IN SHEETING CARD RACK AREA FOR TEMP. STORAGE.

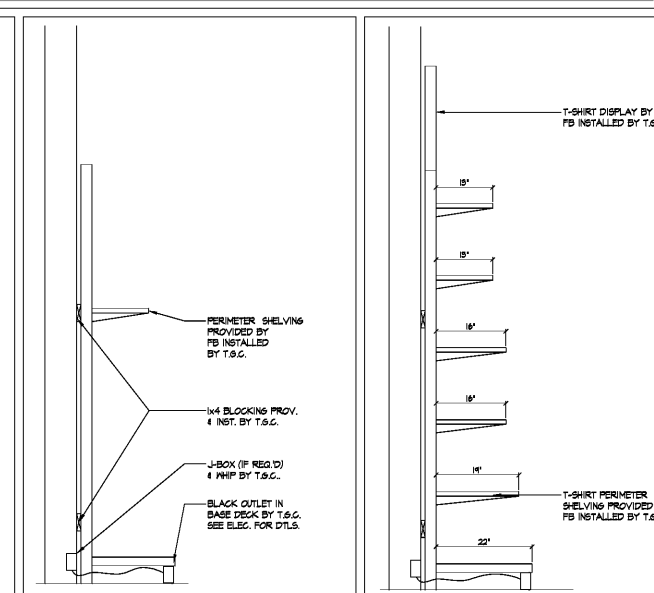
**1 FIXTURE PLAN**

FIXTURE ID	SYMBOL	DESCRIPTION	FIXTURE ID	SYMBOL	DESCRIPTION	FIXTURE ID	SYMBOL	DESCRIPTION	FIXTURE ID	SYMBOL	DESCRIPTION
VRD-ST	[Symbol]	47" X 30" COKE, VITAMIN AND OR POWERADE COOLERS, PROV. & INSTALLED BY FB VENDOR	LF-04	[Symbol]	7" X 50" 1/2" NESTING TABLE	PF-01	[Symbol]	36" X 16" (1" OVERALL) X 96" PERIMETER GONDOLA	ST-01	[Symbol]	24" X 36" STOCKROOM SHELVING
COOLER	[Symbol]	24" X 28" WATER COOLER, PROV. & INSTALLED BY FB VENDOR	LF-05	[Symbol]	24" X 48" BAKERS RACK	PF-10A	[Symbol]	36" X 16" (1" OVERALL) X 120" PERIMETER GONDOLA	ST-01B	[Symbol]	34" X 48" X 120" STOCKROOM SHELVING PEG BOARD
COOLER	[Symbol]	37" X 18" RED BULL COOLER, PROV. & INSTALLED BY FB VENDOR	LF-06	[Symbol]	48" X 80" MULTI-MEDIA TABLE	PF-10B	[Symbol]	36" X 16" (1" OVERALL) X 96" PERIMETER GONDOLA WITH ANGLED TRANSITION BASE	ST-02	[Symbol]	24" X 48" HOPPER BIN
LF-01	[Symbol]	40" X (2) 8" D BASE SHELVES - 3" UPRIGHT (85" OVERALL) X 60" (INTERIOR)	LF-10	[Symbol]	48" X 18" X 30" LINE QUEUE FIXTURE	PF-15	[Symbol]	48" X 18" (16" OVERALL) X 96" PERIMETER GONDOLA	ST-04	[Symbol]	24" X 48" HOPPER BIN
LF-01A	[Symbol]	48" X (2) 8" D BASE SHELVES - 3" UPRIGHT (24" OVERALL) X 60" (INTERIOR)	LF-10A	[Symbol]	36" X 18" X 48" CANDY GONDOLA	PF-15A	[Symbol]	48" X 18" (16" OVERALL) X 120" PERIMETER GONDOLA	ST-06	[Symbol]	ROLLING BAKERS RACKS
LF-01G	[Symbol]	36" X (2) 8" D BASE SHELVES - 3" UPRIGHT (85" OVERALL) X 60" (INTERIOR)	LF-10C	[Symbol]	10" X 18" X 30" LINE QUEUE FIXTURE END CAP	PF-15B	[Symbol]	48" X 18" (16" OVERALL) X 96" PERIMETER GONDOLA	ST-07	[Symbol]	BABY CHANGING STATION
LF-01D	[Symbol]	36" X (2) 8" D BASE SHELVES - 3" UPRIGHT (24" OVERALL) X 60" (INTERIOR)	LF-10E	[Symbol]	18" X 30" X 30" SHALL	PF-15C	[Symbol]	30" X 18" (16" OVERALL) X 120" PERIMETER GONDOLA WITH ANGLED TRANSITION BASE	TRASH CAN	[Symbol]	CAN, 545838R-24" DIA, 32 GA. COLOR: BLACK, LID: SAGKORGH-1. RAIN BOWNET COLOR: BLACK
LF-01E	[Symbol]	(4) 36" X 22" D SHELVES - 3" UPRIGHT (48" OVERALL) X 60"	LF-10F	[Symbol]	18" X 30" X 30" SHALL	PF-15D	[Symbol]	30" X 18" (16" OVERALL) X 120" PERIMETER GONDOLA WITH ANGLED TRANSITION BASE			
LF-01F	[Symbol]	30" X 18" D BASE SHELVES X 60"	LF-10G	[Symbol]	18" X 30" X 30" SHALL	PF-15E	[Symbol]	30" X 18" (16" OVERALL) X 120" PERIMETER GONDOLA WITH ANGLED TRANSITION BASE			
LF-01G	[Symbol]	30" X 18" D BASE SHELVES X 60"	LF-10H	[Symbol]	18" X 30" X 30" SHALL	PF-15F	[Symbol]	30" X 18" (16" OVERALL) X 120" PERIMETER GONDOLA WITH ANGLED TRANSITION BASE			
LF-01H	[Symbol]	36" X 18" D BASE SHELVES X 48"	LF-10I	[Symbol]	18" X 30" X 30" SHALL	PF-15G	[Symbol]	30" X 18" (16" OVERALL) X 120" PERIMETER GONDOLA WITH ANGLED TRANSITION BASE			
LF-02	[Symbol]	36" X 18" X 60"	LF-10J	[Symbol]	18" X 30" X 30" SHALL	PF-15H	[Symbol]	30" X 18" (16" OVERALL) X 120" PERIMETER GONDOLA WITH ANGLED TRANSITION BASE			
LF-02A	[Symbol]	30" X 18" X 60"	LF-10K	[Symbol]	18" X 30" X 30" SHALL	PF-15I	[Symbol]	30" X 18" (16" OVERALL) X 120" PERIMETER GONDOLA WITH ANGLED TRANSITION BASE			
LF-02B	[Symbol]	30" X 18" X 60"	LF-10L	[Symbol]	18" X 30" X 30" SHALL	PF-15J	[Symbol]	30" X 18" (16" OVERALL) X 120" PERIMETER GONDOLA WITH ANGLED TRANSITION BASE			
LF-02C	[Symbol]	WIRE END CAPS PROV. BY FB. INSTALLED BY T.S.G.	LF-10M	[Symbol]	18" X 30" X 30" SHALL	PF-15K	[Symbol]	30" X 18" (16" OVERALL) X 120" PERIMETER GONDOLA WITH ANGLED TRANSITION BASE			
LF-02D	[Symbol]	36" X 18" D BULK END CAP	LF-10N	[Symbol]	18" X 30" X 30" SHALL	PF-15L	[Symbol]	30" X 18" (16" OVERALL) X 120" PERIMETER GONDOLA WITH ANGLED TRANSITION BASE			
LF-02E	[Symbol]	36" X 18" D WIRE END CAP	LF-10O	[Symbol]	18" X 30" X 30" SHALL	PF-15M	[Symbol]	30" X 18" (16" OVERALL) X 120" PERIMETER GONDOLA WITH ANGLED TRANSITION BASE			
LF-02F	[Symbol]	36" X 18" D WIRE END CAP	LF-10P	[Symbol]	18" X 30" X 30" SHALL	PF-15N	[Symbol]	30" X 18" (16" OVERALL) X 120" PERIMETER GONDOLA WITH ANGLED TRANSITION BASE			
LF-02G	[Symbol]	36" X 18" D WIRE END CAP	LF-10Q	[Symbol]	18" X 30" X 30" SHALL	PF-15O	[Symbol]	30" X 18" (16" OVERALL) X 120" PERIMETER GONDOLA WITH ANGLED TRANSITION BASE			
LF-02H	[Symbol]	44" X 42" (2) TWO TIERED CUBE (MIDWAY CUBE)	LF-10R	[Symbol]	18" X 30" X 30" SHALL	PF-15P	[Symbol]	30" X 18" (16" OVERALL) X 120" PERIMETER GONDOLA WITH ANGLED TRANSITION BASE			
LF-04F	[Symbol]	44" X 42" (3) THREE TIERED CUBE	LF-10S	[Symbol]	18" X 30" X 30" SHALL	PF-15Q	[Symbol]	30" X 18" (16" OVERALL) X 120" PERIMETER GONDOLA WITH ANGLED TRANSITION BASE			
LF-04G	[Symbol]	36" DIA. CANDY TOWER TABLE	LF-10T	[Symbol]	18" X 30" X 30" SHALL	PF-15R	[Symbol]	30" X 18" (16" OVERALL) X 120" PERIMETER GONDOLA WITH ANGLED TRANSITION BASE			
LF-04H	[Symbol]	36" DIA. DIVA NAIL TOWER TABLE	LF-10U	[Symbol]	18" X 30" X 30" SHALL	PF-15S	[Symbol]	30" X 18" (16" OVERALL) X 120" PERIMETER GONDOLA WITH ANGLED TRANSITION BASE			

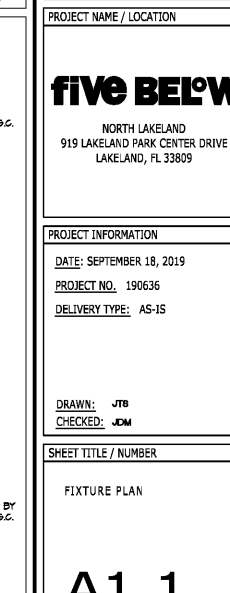
**2 FIXTURE SCHEDULE**

- T.S.G. TO INSTALL ALL BRACKET SIGNS ON FIXTURES. SIGN PURN. BY TENANT. LOCATIONS TO BE DETERMINED BY TENANT.
- ALL DISPLAY FIXTURES, FITTINGS ROOMS (FIXTURE TYPE, CASH BACK WRAP AND RECEIVING AREA) SHALL BE FURNISHED BY THE OWNER AND INSTALLED BY THE T.S.G. THE CONTRACTOR SHALL COORDINATE FINAL ASSEMBLY AND PLACEMENT OF FIXTURES PER ABOVE FIXTURE PLAN.
- T.S.G. SHALL ANCHOR ALL WALL DISPLAY FIXTURES WITH PROPER WALL REINFORCEMENT PROVIDED ANY GOOD BLOCKING MEMBER ALL BE FIRE RESISTANT MATERIAL, COMPLYING WITH ALL APPLICABLE CODES AND STANDARDS.
- T.S.G. MUST TOUCH-UP ALL FIXTURES AFTER INSTALLATION AND PAINT ALL EXPOSED NAILS, SCREWS, ANGLES, ETC. TO MATCH ADJACENT FINISH.
- SEE FLOOR PLAN AND ELEVATIONS FOR WALL FIXTURE LOCATIONS AND ADDITIONAL INFORMATION.
- L.L. SHALL FURNISH AND INSTALL (2) 1/4" CONTINUOUS HORIZONTAL FURNISH STRIPS BEHIND ALL PERIMETER STOCK SHELVES. ATTACH FURNISH STRIPS SECURELY.
- PRIOR TO INSTALLING SHELVING IN STOCKROOM L.L. IS TO VERIFY THE CEILING HEIGHT & PROVIDE PROPER CLEARANCE FOR SPRINKLER HEADS, LIGHTS, ETC. CUT OR MODIFY SHELVING AS REQ'D TO APPROPRIATE FIELD CONDITIONS.
- T.S.G. SHALL ASSEMBLE AND INSTALL ALL VENDOR PROVIDED FIXTURES. COORDINATE LOCATIONS WITH FIXTURE PLAN AND FIVE BELOW REPRESENTATIVE.
- T.S.G. SHALL INSTALL ALL DECALS IN FIXTURES AS SHOWN ON SHEET P1.0.
- T.S.G. SHALL INSTALL ONE SHELF AT ALL WALL GONDOLAS AT SAME HEIGHT PRIOR TO STORE TURNOVER TO ENSURE ALL SHELVING UNITS FIT PROPERLY.
- T.S.G. SHALL INSTALL SIDE WINDER RACKS AT ALL END CAPS AS INDICATED BY AN ASTERISK ON THE FIXTURE PLAN.
- T.S.G. TO REMOVE ALL PLASTIC WRAPPINGS AFTER PLACEMENT OF FIXTURE. DO NOT FULL FIXTURES BY POLES.

**3 FIXTURE NOTES**



**A PERIMETER SEC.** SCALE: 3/4" = 1'-0"



**B T-SHIRT SEC.** SCALE: 3/4" = 1'-0"