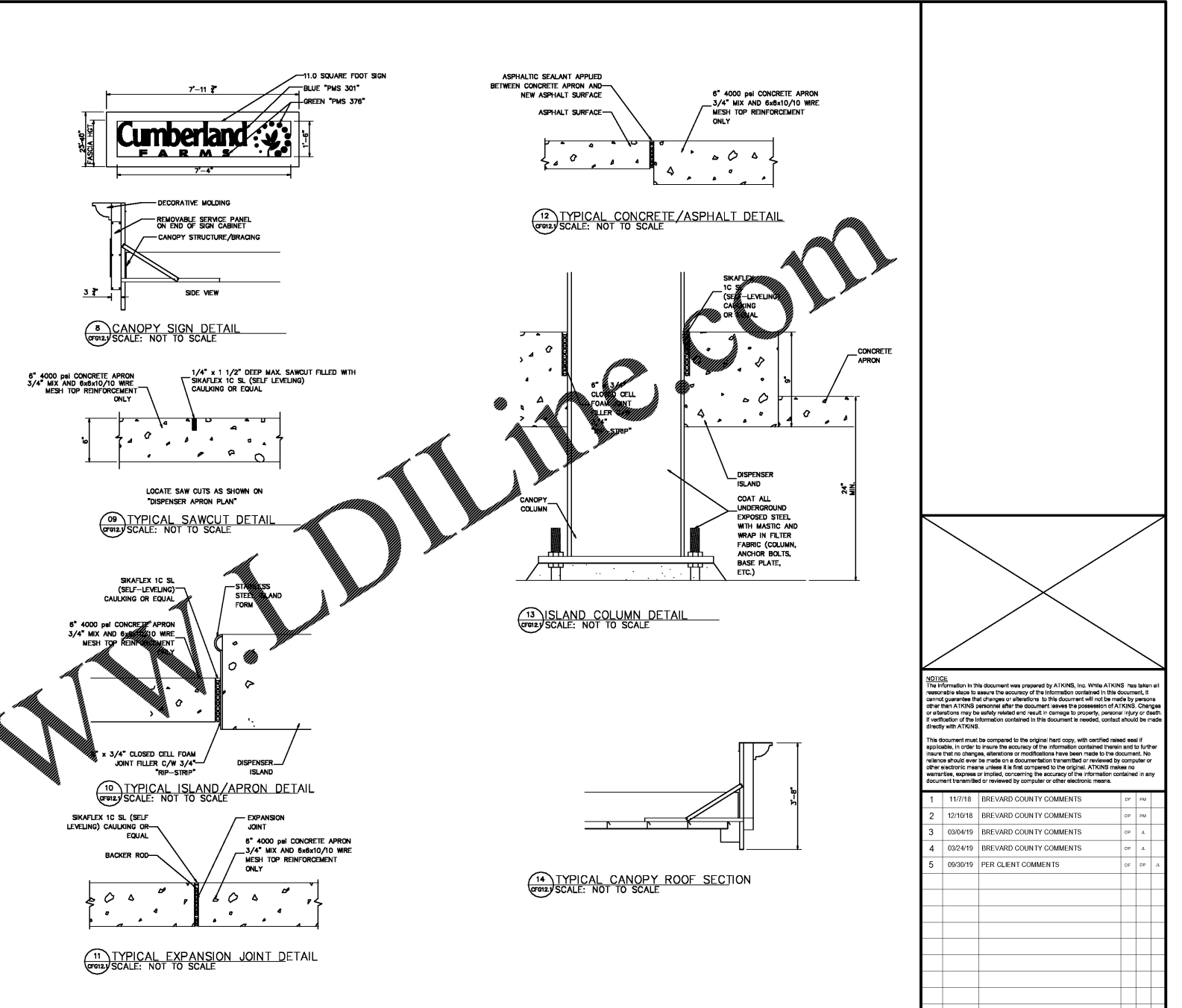
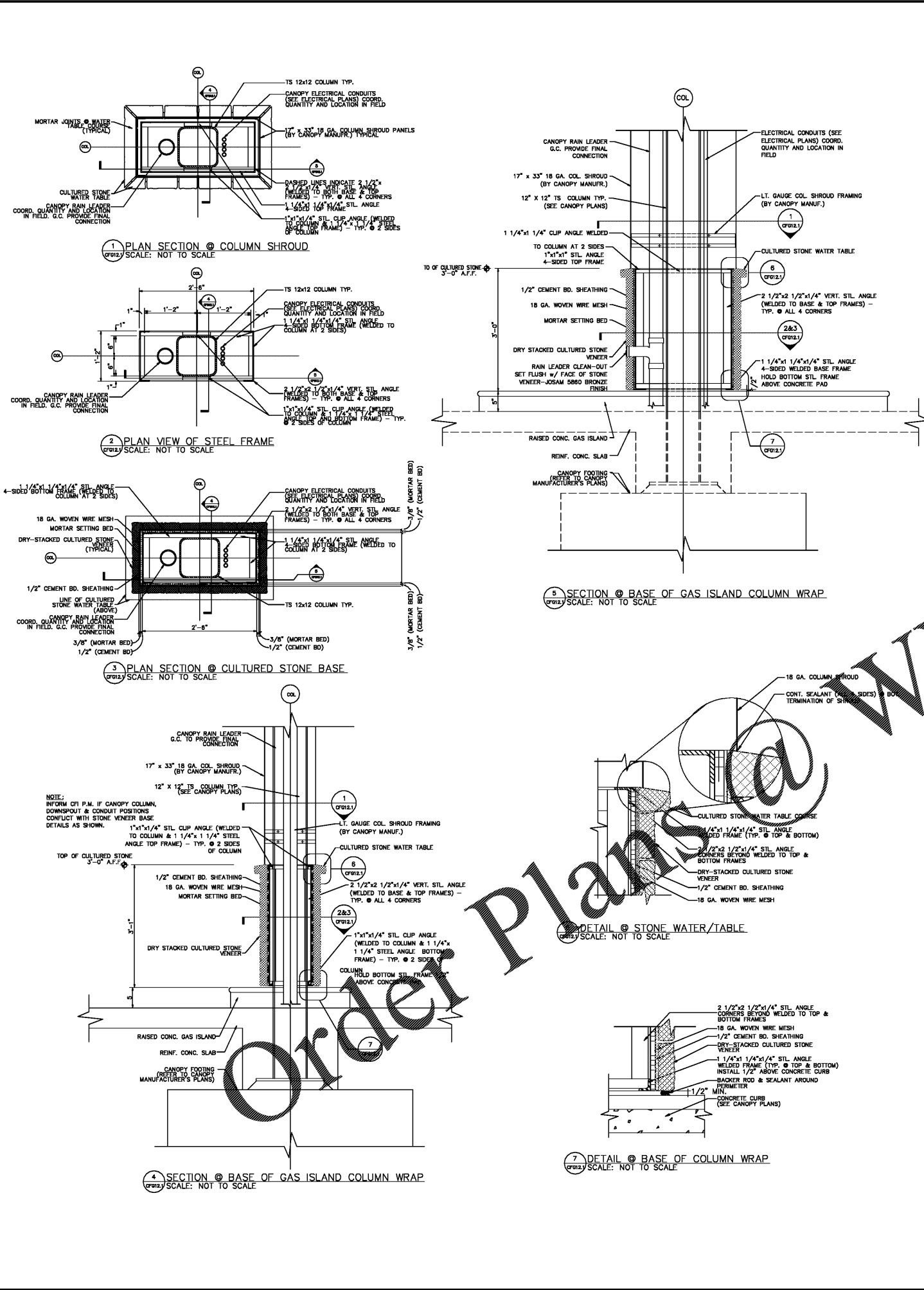
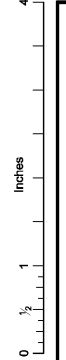


U:\P\00060192 - CF - Micco Rd & US-110 CAD\CF12.1 CANOPY DETAILS.dwg
 User: PBE4816
 G:\PROJECTS\00060192 - CF - Micco Rd & US-110 CAD\CF12.1 CANOPY DETAILS.dwg



CANOPY DETAIL SCHEDULE						
MARK	DESCRIPTION	MANUFACTURER	MODEL	COLOR	QUANTITY	REMARKS
A	CANOPY FASCIA	ALCOA	ACM: RYNOBOND	SHELL WHITE	PER PLAN	BY CANOPY MFR.
B	CANOPY STRIPING	ALCOA	ACM: RYNOBOND	OUTRAGEOUS GREEN	PER PLAN	8" ACM, BY CANOPY MFR.
C	MULTI-PRODUCT DISPENSER	WAYNE	OVATION B12		PER PLAN	SUPPLIED BY KENNEDY
D	3+1 DIESEL DISPENSER	WAYNE	OVATION B23		PER PLAN	SUPPLIED BY KENNEDY
E	CANOPY COLUMN SHROUDS			SHELL WHITE	5	17"x33" SHROUDS
F	BOLLARDS	UNIVERSAL	6" OD X 42"H	SHELL WHITE	PER PLAN	STEEL BOLLARD WITH PVC SLEEVE BY CF
G	CULTURED STONE VENEER	OWENS CORNING CULTURED STONE	CSV-2028 SOUTHERN LEDGESTONE	ECHO RIDGE	PER PLAN	BY CUMBERLAND FARMS INSTALLED BY GC
H	CULTURED STONE CAPS	OWENS CORNING CULTURED STONE	CSV-2028 SOUTHERN LEDGESTONE	ECHO RIDGE	PER PLAN	BY CUMBERLAND FARMS INSTALLED BY GC
I	DECORATIVE MOLDING	CANOPY MANUFACTURER		SHELL WHITE	PER PLAN	BY CANOPY MFR.
J	DISPENSER ISLAND FORM	RIVERSIDE STEEL		STAINLESS STEEL	PER PLAN	SUPPLIED BY KENNEDY
K						
L	HAND OPERATED 40BC FIRE EXTINGUISHER	LARSON			PER PLAN	ALL CABINETS IN COLUMN FACING STORE SIDE
M						
N	DISPENSER NUMBERING SIGN			WHITE W/ GREEN #	10	PROVIDED BY CF TO BE APPLIED IN THE FIELD BY GC

NOTICE
The information in this document was prepared by ATKINS, Inc. While ATKINS has taken all reasonable steps to ensure the accuracy of the information contained in this document, it cannot guarantee that changes or alterations to this document will not be made by persons other than ATKINS personnel after the document leaves the possession of ATKINS. Changes or alterations may be safety related and result in damage to property, personal injury or death. If verification of the information contained in this document is needed, contact should be made directly with ATKINS.

This document must be compared to the original hard copy, with certified raised seal if applicable. In order to insure the accuracy of the information contained herein and to further insure that no changes, alterations or modifications have been made to the document, no reliance should ever be made on a document transmitted or reviewed by computer or other electronic means unless it is first compared to the original. ATKINS makes no warranty, express or implied, concerning the accuracy of the information contained in any document transmitted or reviewed by computer or other electronic means.

Rev.	Date	Description	By	CHK'd
1	11/7/18	BREVARD COUNTY COMMENTS	CF	PA
2	12/10/18	BREVARD COUNTY COMMENTS	CF	PA
3	03/04/19	BREVARD COUNTY COMMENTS	CF	JA
4	03/24/19	BREVARD COUNTY COMMENTS	CF	JA
5	09/30/19	PER CLIENT COMMENTS	CF	JA

Drawing Status: **FOR PERMITTING** Suitability: **\$0**

ATKINS CORPORATE OFFICE: 4030 W. BOY SCOUT BLVD TAMPA, FLORIDA 33607
 LOCAL OFFICE: 7175 MURRELL ROAD MELBOURNE, FL 32940
 TEL 321.242.4942 FAX 321.242.6101 www.atkinsglobal.com
 Copyright © Atkins Limited (2017)

Client: **Cumberland Farms**
 CUMBERLAND FARMS INC.
 186 FLAMERS ROAD
 WESTBOROUGH, MA 01581

Project Title: **MICCO ROAD & US-1 BREVARD COUNTY, FL 100060192**

Drawing Title: **CANOPY DETAILS**

Scale	Designed	Drawn	Checked	Authorized
Original Size	JL	DF		
ARCH D	Date	Date	Date	Date

Drawing Number: **CFG12.1** Revision: _____