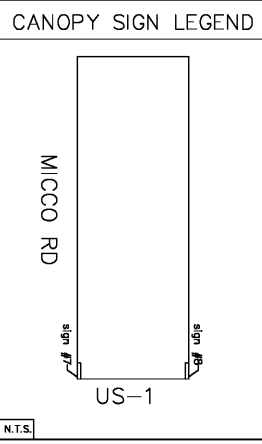
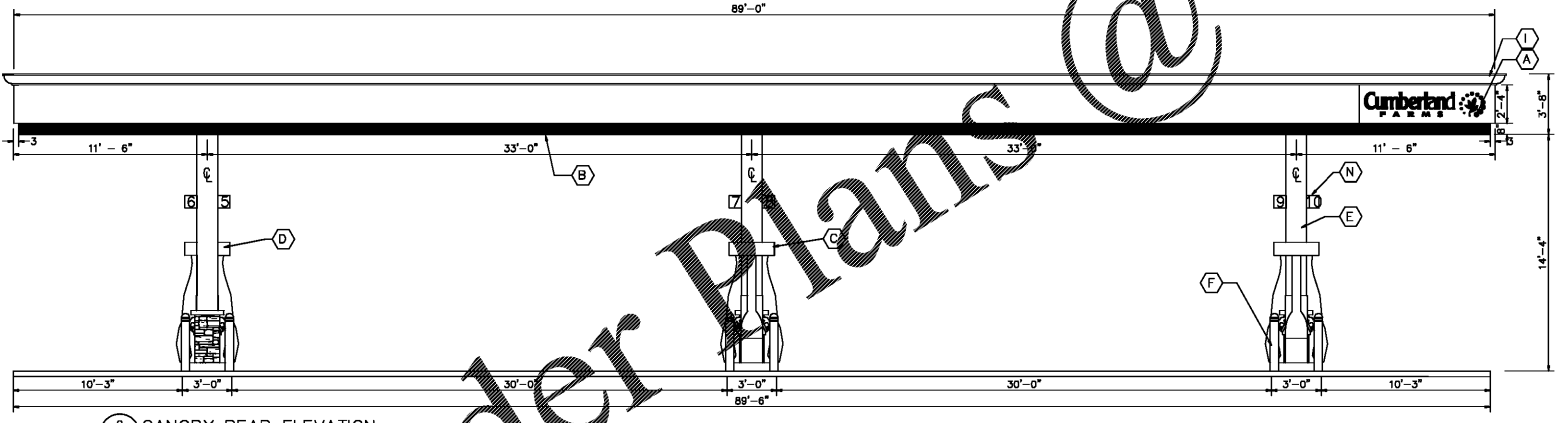
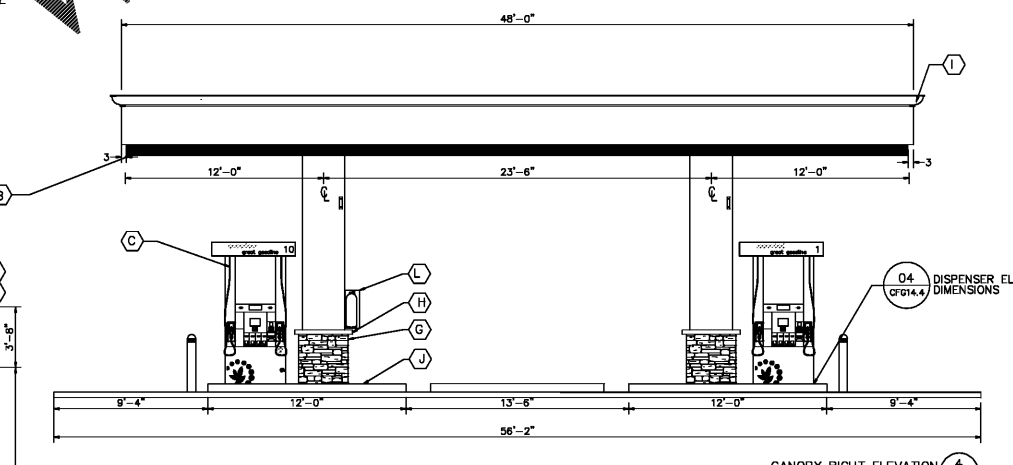
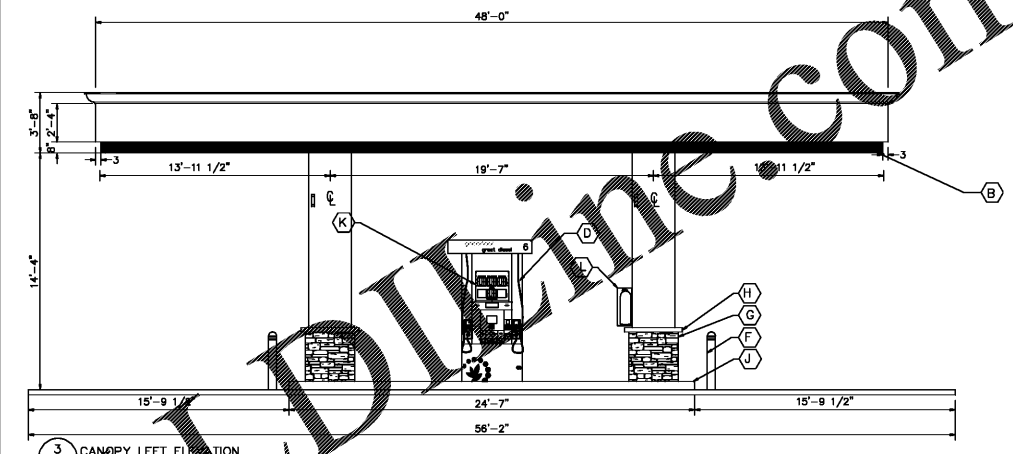
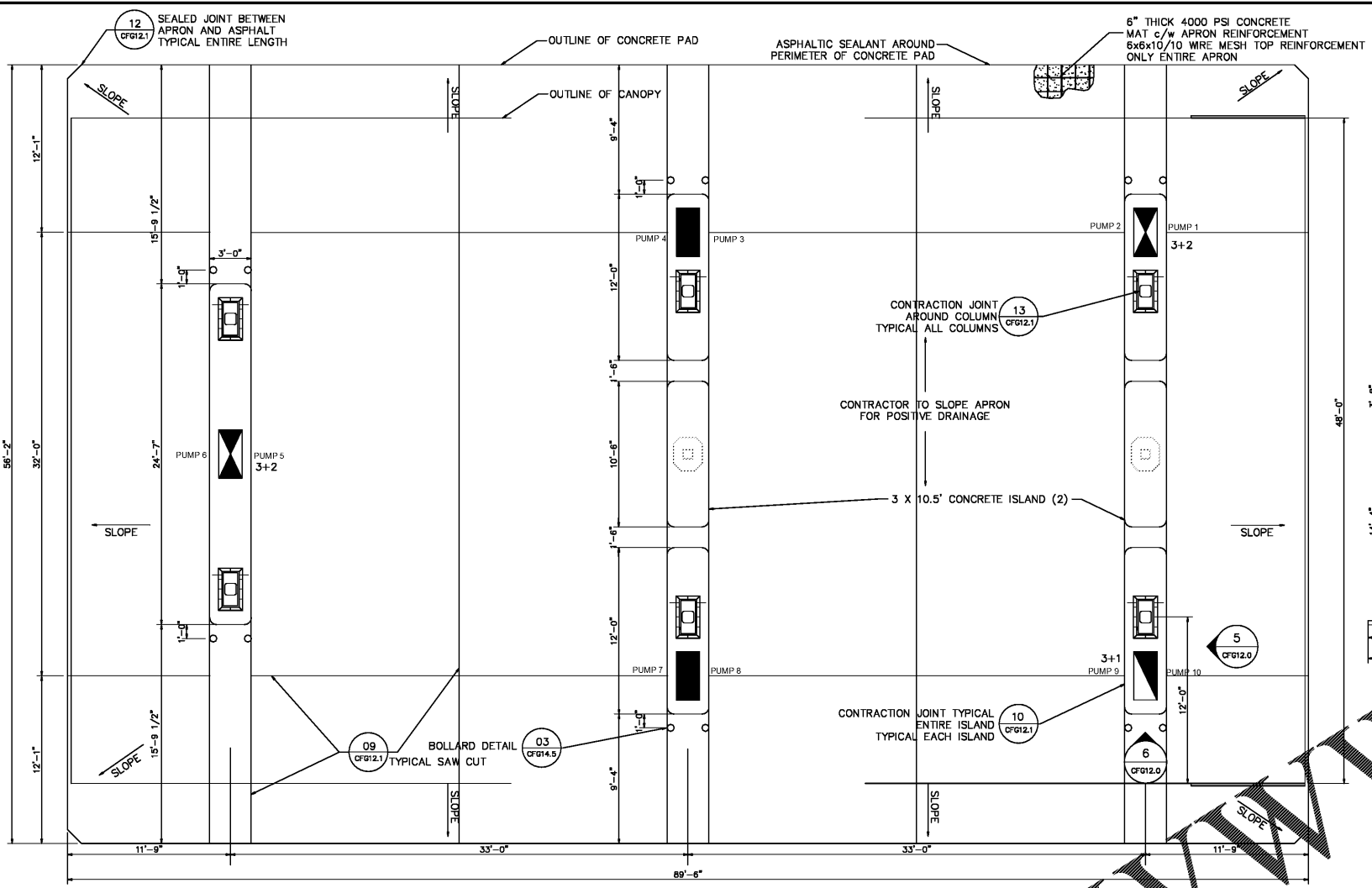


User: PEEZ4816 C:\PROJECTS\100060192 - CF - Micco - Micco Rd & US-1\10 CAD\CFG12.0 CANOPY ELEVATIONS.dwg



- NOTES:
- COORDINATE APRON ELEVATIONS WITH CIVIL DRAWINGS AND FIELD ELEVATIONS.
 - DISPENSER SUMPS TO BE SET IN PLACE AND USED AS A FORM TO POUR CONCRETE AROUND.
 - CONCRETE SPECIFICATIONS:
 - SOIL BEARING CAPACITY REQ'D: AS PER GEOTECHNICAL REPORT
 - CONC. STRENGTH: 4000psi @ 28 DAYS 3% TO 7% AIR, TROWELLED SMOOTH FINISH WITH TWO COATS SEALING/CURING COMPOUND.
 - CANOPY FOOTING CONC. STRENGTH: REFER TO DRAWINGS PROVIDED BY MANUFACTURER
 - ALL EQUIPMENT INSTALLATIONS MUST COMPLY WITH MANUFACTURER'S SPECIFICATIONS.
 - ALL EQUIPMENT AND CONSTRUCTION ARE NEW AND FACILITY IS TO BE ATTENDED SELF-SERVICE.
 - REFER TO CANOPY MANUFACTURERS DRAWINGS FOR SPECIFIC CANOPY FOOTING OPTIONS.
 - REFER TO CANOPY MANUFACTURERS DRAWINGS FOR ARCHITECTURAL DETAILS ON CANOPY AND COLUMNS.
 - SEE CIVIL PLANS FOR ORIENTATION ON SITE, AND FOR TRAFFIC FLOW
 - REFER TO CANOPY DETAIL SCHEDULE ON SHEET CFG12.1 FOR ADDITIONAL INFORMATION
 - GO TO COORDINATE THE SPECIFIC LOCATIONS OF THE APRON EXPANSION JOINTS BASED ON THE FINAL POSITIVE LIMITING BARRIER DESIGN, REFER TO THE FIRE SUPPRESSION PLAN FOR THE PLB LAYOUT
 - SEE ICON SIGN PLANS FOR ACTUAL CANOPY SIGNAGE.

NOTICE: The information in this document was prepared by ATKINS, Inc. While ATKINS, Inc. has taken all reasonable steps to ensure the accuracy of the information contained in this document, it cannot guarantee that changes or alterations to this document will not be made by persons other than ATKINS personnel after the document leaves the possession of ATKINS. Changes or alterations may be safety related and result in damage to property, personal injury or death. Verification of the information contained in this document is needed, contact should be made directly with ATKINS.

This document must be compared to the original hard copy, with certified raised seal if applicable, in order to insure the accuracy of the information contained therein and to further insure that no changes, alterations or modifications have been made to the document. No reliance should ever be made on a documentation transmitted or received by computer or other electronic means unless it is first compared to the original. ATKINS makes no warranties, express or implied, concerning the accuracy of the information contained in any document transmitted or received by computer or other electronic means.

Rev.	Date	Description	By	Check/Approve
1	12/21/18	CLIENT COMMENTS	DF	JL
2	9/30/19	CLIENT COMMENTS	DF	JL

Drawing Status: FOR PERMITTING

Submittal: \$0

ATKINS

CORPORATE OFFICE: 4030 W. BOY SCOUT BLVD TAMPA, FLORIDA 33607
 LOCAL OFFICE: 7175 MURRELL ROAD MELBOURNE, FL 32940
 TEL. 321.242.4542 FAX. 321.242.6101
 www.atkinsglobal.com

Copyright © Atkins Limited (2017)



Project Title: MICCO ROAD & US-1 BREVARD COUNTY, FL 100060192

Drawing Title: CANOPY ELEVATIONS

Scale	Designed	Drawn	Checked	Authorized
Original Size	JL	DF		
ARCH D	Date	Date	Date	Date
Drawing Number	CFG12.0			Revision