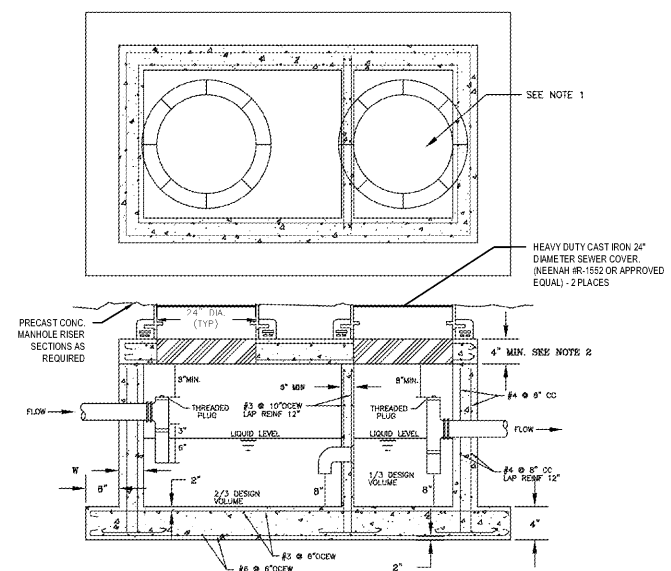


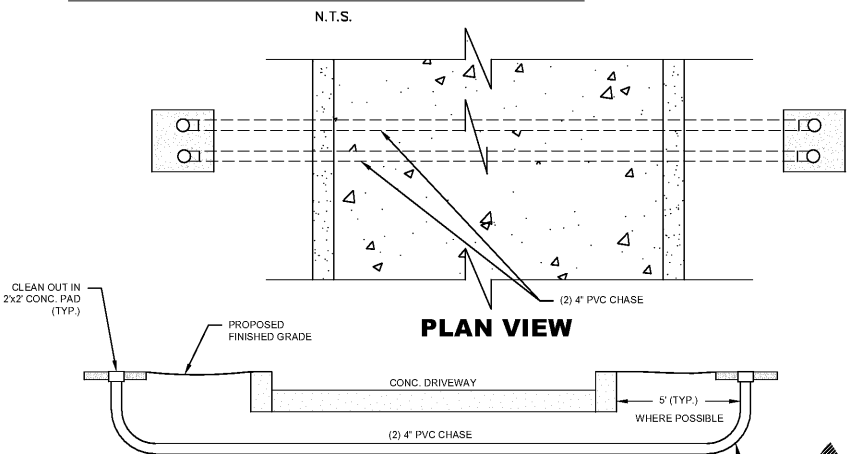
4
3
2
1
0
Inches



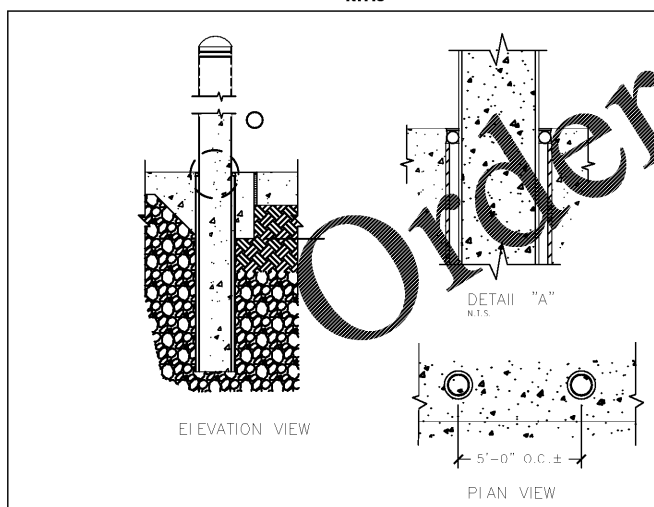
DESIGN DATA:
 PIPE SIZES 6" TYPICAL
 CONCRETE 3000 PSI MIN.
 W = 4 INCH IF PRECAST STRUCTURE
 W = 5 INCH IF CAST IN PLACE STRUCTURE
 TOP REINFORCEMENT = BOTTOM REINFORCEMENT (750 TO 1500 GALLON TANKS)
 DIMENSION SHALL BE BASED ON TANK VOLUME CASE BY CASE.

NOTES:
 1. LIDS SHALL BE STAMPED "GREASE" OR "OIL" AS APPROPRIATE.
 2. FINAL DESIGN OF GREASE TRAP TO MEET ALL LOCAL AND STATE REQUIREMENTS.
 3. ALL REINFORCEMENT PER ASTM C127-27.
 4. DESIGNED FOR H-20 LOADING.
 5. TONGUE & GROOVE JOINT SEALED WITH BUTYL RESIN.
 6. TEES AND Baffles SOLD SEPARATELY.
 7. GREASE TRAP AS MANUFACTURED BY SHEA CONCRETE PRODUCTS OR APPROVED EQUAL.
 8. CONTRACTOR TO PROVIDE DESIGN ENGINEER SHOP DRAWINGS AND SIZING CALCULATIONS AS PART OF THE BUILDING PERMIT APPLICATION PROCESS.

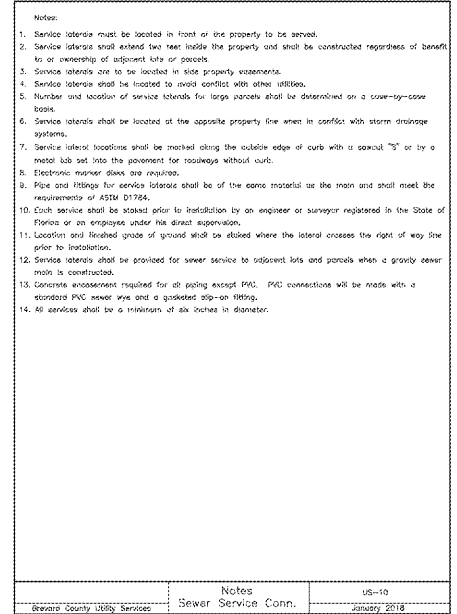
1,500 GALLON GREASE TRAP DETAIL



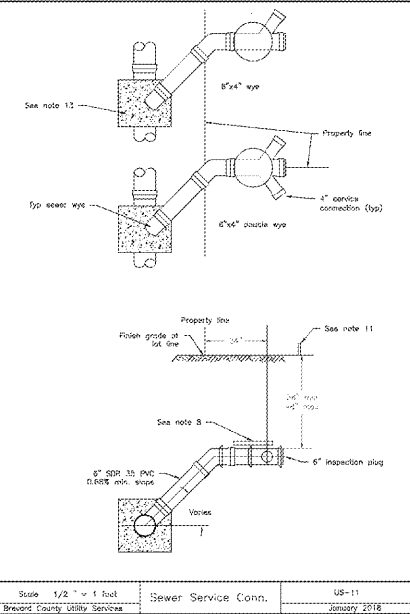
PVC CHASE DETAIL



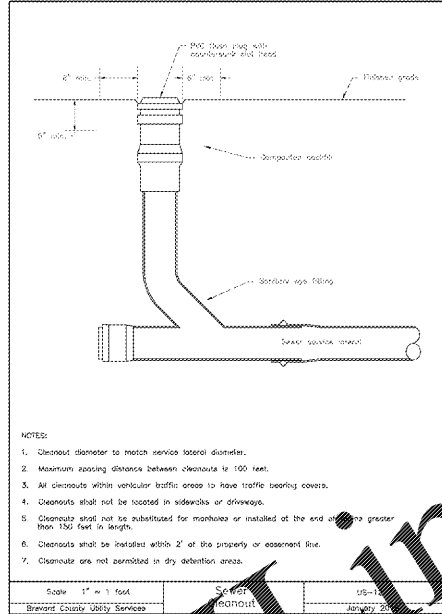
BOLLARD SET IN CONCRETE WALK - FLUSH WITH SIDEWALK ONLY -



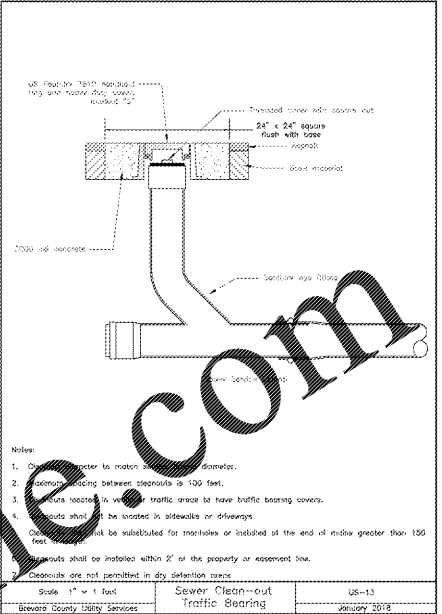
Notes Sewer Service Conn. US-10 January 2018



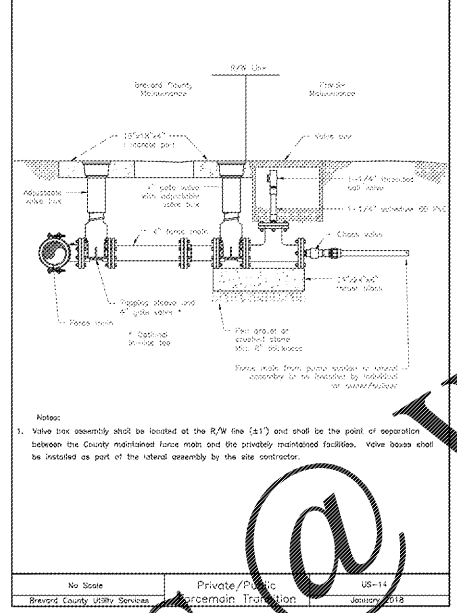
Scale 1/2" = 1' Sewer Service Conn. US-11 January 2018



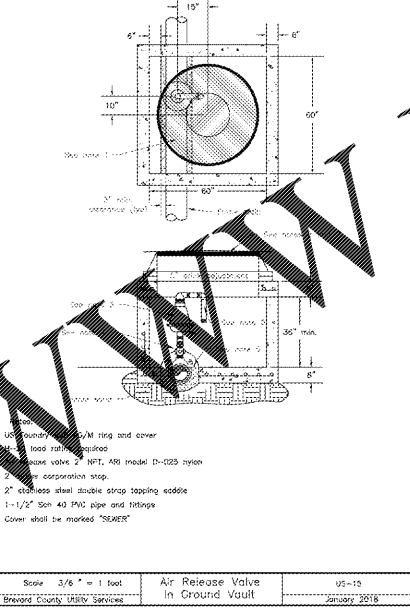
Scale 1" = 1' Sewer Manhole US-12 January 2018



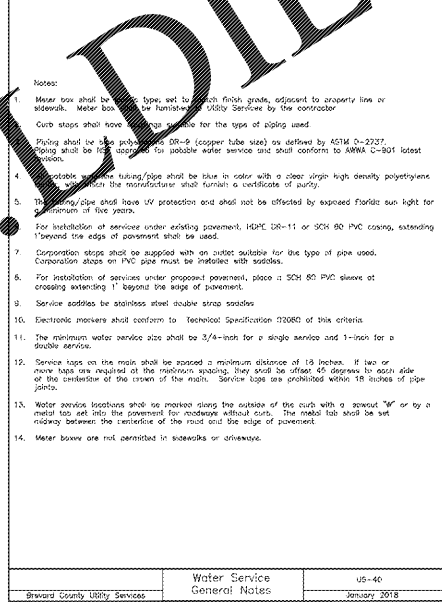
Scale 1" = 1' Sewer Clean-out Traffic Bearing US-13 January 2018



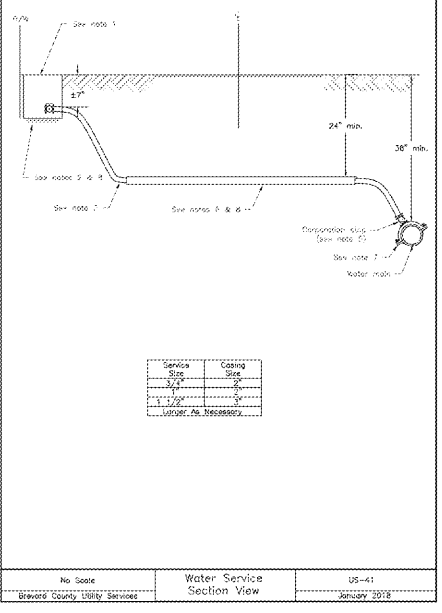
Scale 3/8" = 1' Air Release Valve In Ground Vault US-14 January 2018



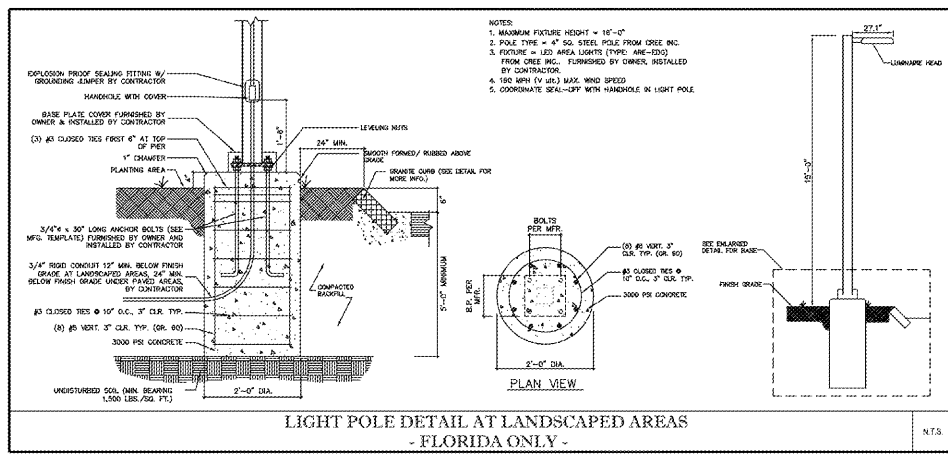
Scale 3/8" = 1' Water Service General Notes US-46 January 2018



Scale 1/2" = 1' Water Service Section View US-41 January 2018



Scale 1/2" = 1' Water Service Section View US-41 January 2018



LIGHT POLE DETAIL AT LANDSCAPED AREAS - FLORIDA ONLY -

JEFFREY LUCAS, P.E.
 FLORIDA REG. NO. 71821

NOTICE: The information in this document was prepared by ATKINS, Inc. While ATKINS has taken all reasonable steps to ensure the accuracy of the information contained herein and in fact does not guarantee that changes or alterations to this document will not be made by persons other than ATKINS personnel after the document leaves the possession of ATKINS. Changes or alterations may be made without notice and result in damage to property, personal injury or death. If verification of the information contained in the document is required, contact should be made directly with ATKINS.

This document must be compared to the original hard copy, with certified sealed sets if applicable, in order to ensure the accuracy of the information contained herein and in fact does not guarantee that changes or alterations to this document will not be made by persons other than ATKINS personnel after the document leaves the possession of ATKINS. Changes or alterations may be made without notice and result in damage to property, personal injury or death. If verification of the information contained in the document is required, contact should be made directly with ATKINS.

1	11/7/18	BREVARD COUNTY COMMENTS	CP	JL
2	12/10/18	BREVARD COUNTY COMMENTS	CP	JL
3	03/04/19	BREVARD COUNTY COMMENTS	CP	JL
4	03/24/19	BREVARD COUNTY COMMENTS	CP	JL
5	09/30/19	PER CLIENT COMMENTS	CP	JL

Rev.	Date	Description	By	Checked

Drawing Status: **FOR PERMITTING** Submittal: **\$0**

ATKINS
 CORPORATE OFFICE: 4030 W. BOY SCOUT BLVD TAMPA, FLORIDA 33607
 LOCAL OFFICE: 7175 MURRELL ROAD MELBOURNE, FL 32940
 TEL. 321.242.4942 FAX. 321.242.6101
 Copyright © Atkins Limited (2017)

Cumberland Farms
 CUMBERLAND FARMS INC.
 150 FLORIAN ROAD WESTBOROUGH, MA 01581

Project Title: **MICCO ROAD & US-1 BREVARD COUNTY, FL 100060192**

Drawing Title: **UTILITY DETAILS**

Scale	Designed	Drawn	Checked	Authorized
Original Size	JL	DF		
ARCHD	Date	Date	Date	Date
Drawing Number	Revision			

CFG09.5

User: PERE4816 G:\PROJECTS\100060192 - CF - Micco - Micco Rd & US-1\1.0 CAD\CF09.5 BREVARD COUNTY PUBLIC WORKS NOTES.dwg

Order Plans @