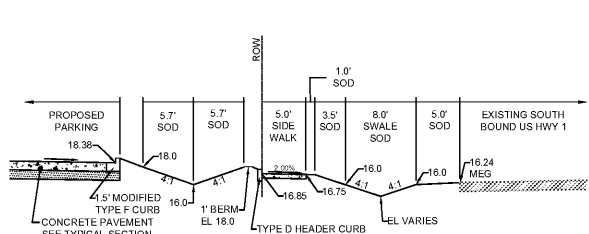
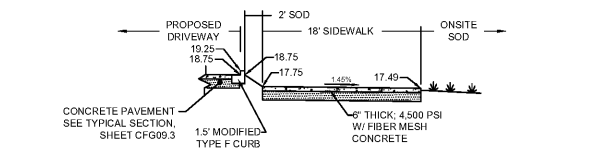


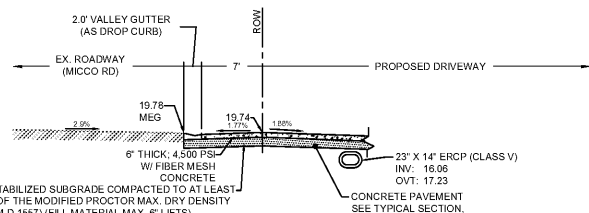
User: PERE4816 G:\PROJECTS\100060192 - CF - Micco Rd & US-1 TO CAD\CF09.08 BREVARD COUNTY PUBLIC WORKS NOTES.dwg



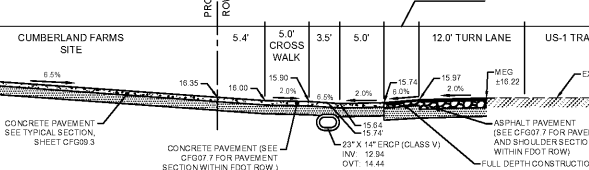
**SECTION A-A**  
N.T.S.



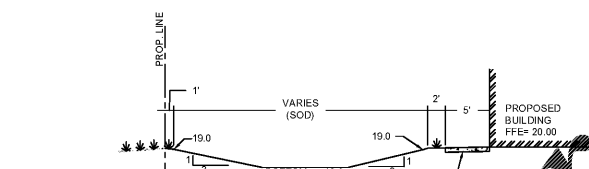
**SECTION B-B**  
N.T.S.



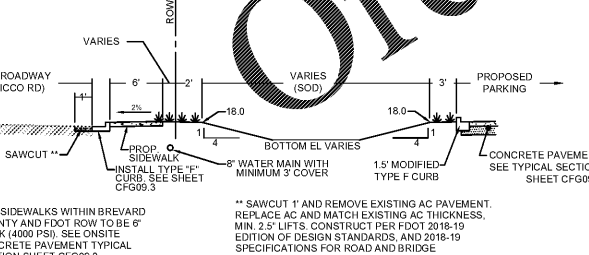
**SECTION C-C**  
N.T.S.



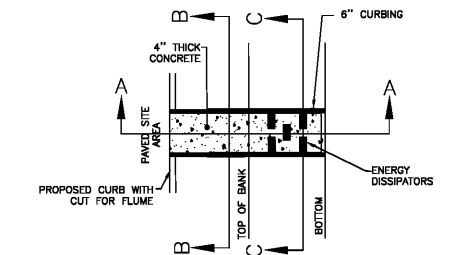
**SECTION D-D**  
N.T.S.



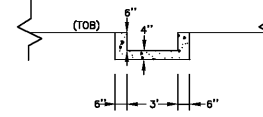
**SECTION E-E**  
N.T.S.



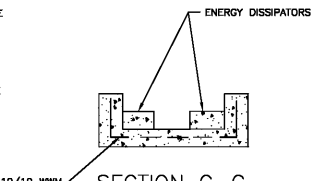
**SECTION F-F**  
N.T.S.



**SECTION A-A**  
N.T.S.



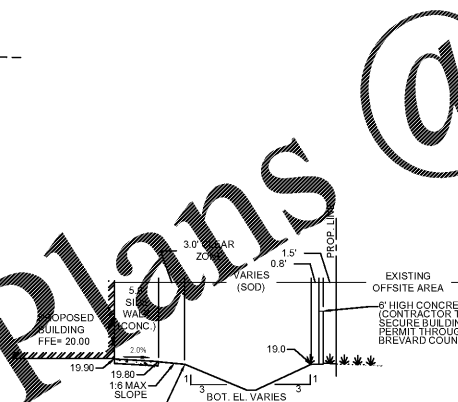
**SECTION B-B**  
N.T.S.



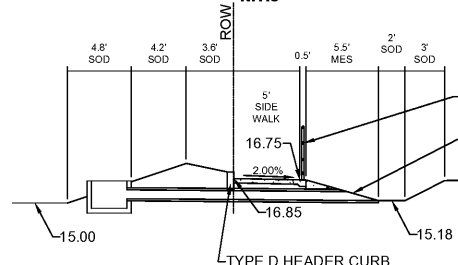
**SECTION C-C**  
N.T.S.

- NOTES:**
1. CONCRETE FLUME TO BE 28 DAY, 3000 PSI, 4" THICK.
  2. PLACE SOD AT LEAST 5' ALL AROUND SPILLWAY STRUCTURE UNLESS RIP-RAP PAD IS NOTED OTHERWISE.
  3. PLACE RIP-RAP PAD AS SHOWN. USE LARGE STONE AT DISCHARGE END OF SPILLWAY UNDERLAIN WITH FABRIC CLOTH. STONE PLACEMENT MAY NEED TO BE ADJUSTED OVER TIME OR AFTER MAJOR RAINFALL EVENTS TO MINIMIZE CHANNELIZATION.
  4. REFER TO FDOT INDEX 283 FOR ADDITIONAL GUIDANCE.

**CONCRETE FLUME**  
N.T.S.

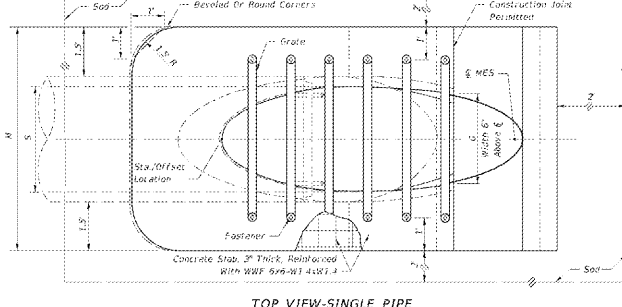


**SECTION G-G**  
N.T.S.

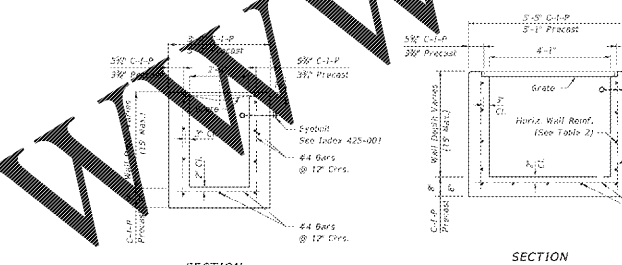
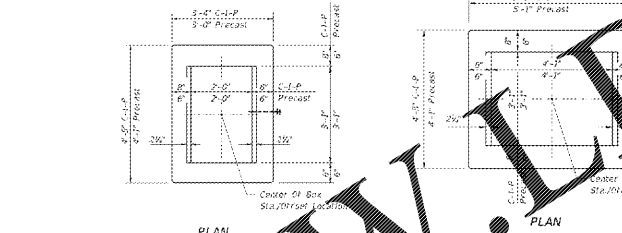


**SECTION H-H**  
N.T.S.

Rise R	Span S	DIMENSIONS & QUANTITIES																												
		x	A	B	C	E	F	G	H	M	GRATE SIZES				CONCRETE (CY)				SODDING (SY)											
12"	18"	2.10	2.88	3.09	3.42	3.03	3.1	1.30	2.0	4.92	7.70	10.38	13.42	1.21	1.21	1.21	1.21	1.21	1.21	1.21	1.21	1.21	1.21	1.21	1.21	1.21	1.21	1.21	1.21	1.21



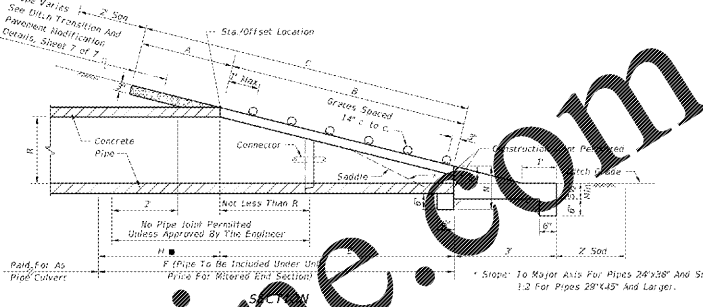
**MITERED END SECTION SINGLE ELLIPTICAL CONCRETE PIPE - FDOT INDEX 430-002**  
N.T.S.



HORIZONTAL WALL REINFORCING SCHEDULES (TABLE 1)				HORIZONTAL WALL REINFORCING SCHEDULES (TABLE 2)			
WALL DEPTH	SCHEDULE	AREA (IN. <sup>2</sup> /FT.)	MAX. SPACING BARS W/W/	WALL DEPTH	SCHEDULE	AREA (IN. <sup>2</sup> /FT.)	MAX. SPACING BARS W/W/
6"-12"	A12	0.20	12"	6"-10"	A12	0.20	12"
10"-12"	A6	0.20	6"	10"-12"	A6	0.20	6"
12"-12"	A6	0.24	50"	12"-12"	B5.5	0.24	50"

TYPE C		TYPE D	
2'-0" Wall - 10" Pipe	2'-0" Wall - 10" Pipe	2'-0" Wall - 20" Pipe	2'-0" Wall - 36" Pipe
2'-2" Wall - 24" Pipe (12" where no 12" slope enters a 2'-0" wall)			

**FDOT TYPE C & D INLET DETAILS**  
N.T.S.



**NOTE:**

1. COST OF FILTER FABRIC JACKET TO BE INCLUDED IN COST OF PIPE CULVERTS.
2. FOR ALL PIPE - CONCRETE PIPE SHOWN

**PIPE JOINT FILTER FABRIC JACKET**  
N.T.S.

JEFFREY LUCAS, P.E.  
FLORIDA REG. NO. 71021

STATE OF FLORIDA  
PROFESSIONAL ENGINEER

**NOTICE:**

The information in this document was prepared by ATKINS, Inc. While ATKINS, Inc. has taken all reasonable steps to ensure the accuracy of the information contained in this document, it cannot guarantee that changes or alterations to this document will not be made by persons other than ATKINS, Inc. or its authorized representatives. If you are not an authorized representative of ATKINS, Inc. and you are relying on the information contained in this document, you do so at your own risk. ATKINS, Inc. makes no warranties, express or implied, concerning the accuracy of the information contained in any document prepared or reviewed by computer or other electronic means.

11/17/18 BREVARD COUNTY COMMENTS CP PL

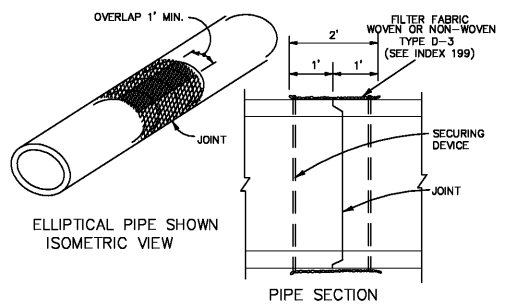
12/10/18 BREVARD COUNTY COMMENTS CP PL

03/04/19 BREVARD COUNTY COMMENTS CP PL

03/24/19 BREVARD COUNTY COMMENTS CP PL

09/30/19 PER CLIENT COMMENTS CP PL

**TRENCH CUTS AND RESTORATIONS ACROSS ROADWAYS - FDOT INDEX 125-001**  
N.T.S.



**NOTE:**

1. COST OF FILTER FABRIC JACKET TO BE INCLUDED IN COST OF PIPE CULVERTS.
2. FOR ALL PIPE - CONCRETE PIPE SHOWN

**PIPE JOINT FILTER FABRIC JACKET**  
N.T.S.

**ATKINS** CORPORATION OFFICE: 4030 W. BOY SCOUT BLVD TAMPA, FLORIDA 33607  
LOCAL OFFICE: 7175 MURRELL ROAD MELBOURNE, FL 32940  
TEL. 321.242.4942 FAX. 321.242.6101 www.atkinsglobal.com

Copyright © Atkins Limited (2017)

**Cumberland Farms**  
CUMBERLAND FARMS INC.  
150 FLUCCER ROAD  
WESTBOROUGH, MA 01581

Project Title: **MICCO ROAD & US-1 BREVARD COUNTY, FL**  
100060192

Drawing Title: **SECTIONS AND DRAINAGE DETAILS**

Scale	Designed	Drawn	Checked	Authorized
	JL	DF		

Original Size: ARCH D  
Drawing Number: CFG09.0