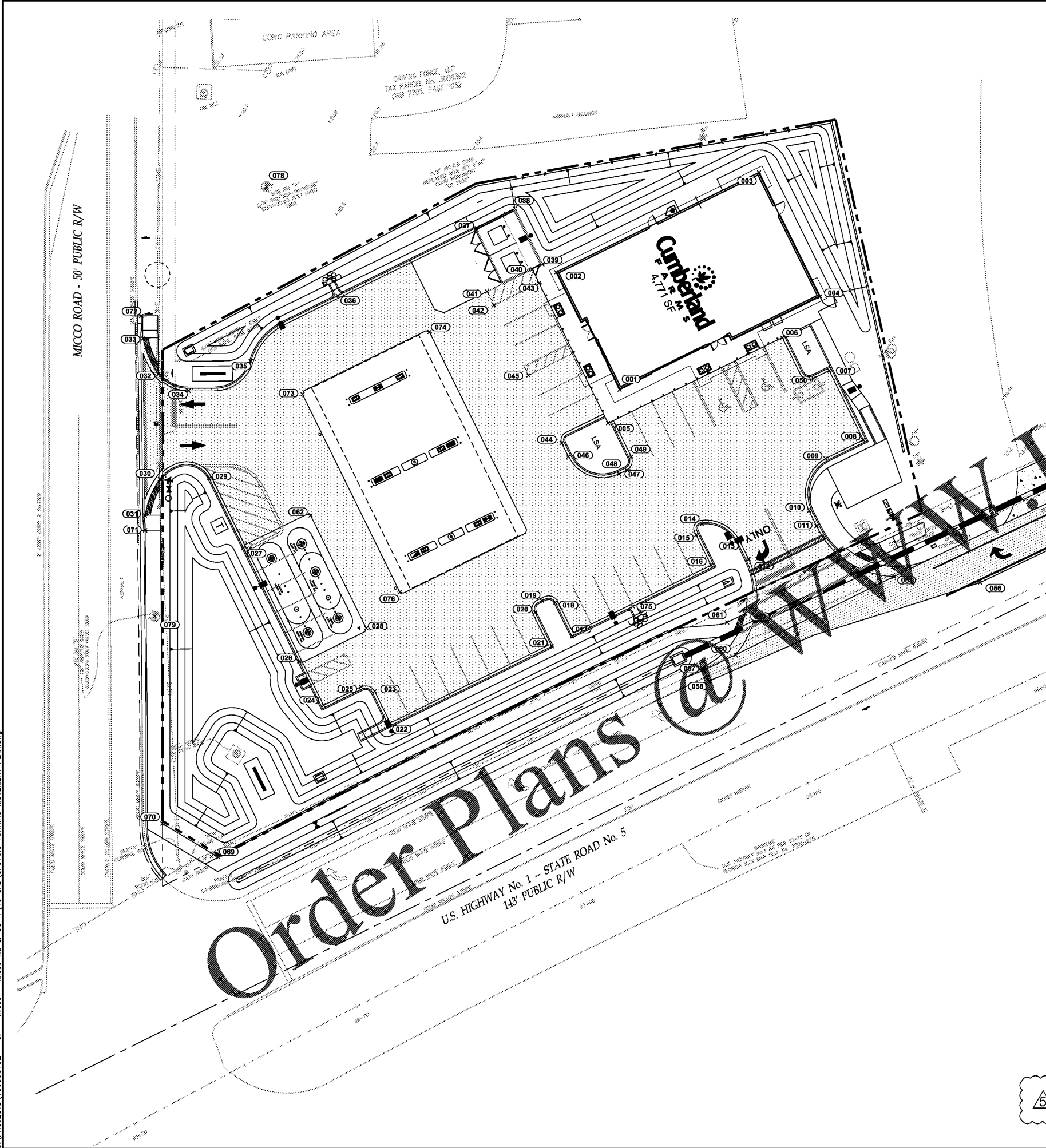


0 1 2 3 4
Inches

User: PERE4816
G:\PROJECTS\100060192 - CF - Micco Rd & US-1\1.0 CAD\CF016.0 TURNING MOVEMENT PLAN.dwg



HORIZONTAL CONTROL TABLE			
NAME	DESCRIPTION	NORTHING	EASTING
001	BLDG COR	1289726.95	816995.41
002	BLDG COR	1289701.80	816948.79
003	BLDG COR	1289782.37	816909.17
004	BLDG COR	1289806.61	816958.46
005	EP	1289722.39	817008.80
006	EP	1289791.59	816974.79
007	EP	1289810.21	816987.90
008	EP	1289823.76	817015.44
009	EP/PT	1289808.78	817022.83
010	EP/PT	1289802.29	817043.51
011	EP/PT	1289805.15	817049.61
012	EP/PT	1289778.23	817062.85
013	EP/PT	1289774.69	817055.65
014	EP/PT	1289759.88	817045.84
015	EP/PT	1289757.39	817033.13
016	EP	1289763.29	817065.10
017	EP	1289708.09	817093.49
018	EP/PT	1289701.48	817080.03
019	EP/PT	1289706.11	817079.33
020	EC/PT	1289693.40	817084.00
021	EC	1289700.02	817097.46
022	EC	1289635.87	817127.90
023	EC/PT	1289629.69	817115.34
024	EC/PT	1289609.42	817120.85
025	EX	1289624.33	817113.51
026	EC	1289599.70	817103.36
027	EC/PT	1289577.60	817058.45
028	EP/PT	1289626.32	817090.27
029	EP/PT	1289563.97	817030.70
030	EP/PT	1289544.31	817031.02
031	EP/PT	1289538.48	817045.45
032	EP/PT	1289543.84	816989.31
033	EP/PT	1289537.67	816975.16
034	EP/PT	1289555.82	816995.92
035	EP/PT	1289580.49	816984.14
036	EP/PT	1289615.05	816958.13
037	EP/FNC	1289670.26	816932.09

HORIZONTAL CONTROL TABLE			
NAME	DESCRIPTION	NORTHING	EASTING
038	BLDG COR	1289685.38	816923.54
039	BLDG COR	1289696.26	816945.68
040	EP/FNC	1289692.29	816947.63
041	EP/PT	1289674.36	816956.45
042	EP/PT	1289677.05	816951.92
043	EP	1289695.00	816952.10
044	EP	1289700.07	817016.82
045	EP/PT	1289690.75	816989.75
046	EP/PT	1289708.65	817022.11
047	EP/PT	1289706.73	817028.95
048	EP/PT	1289729.83	817027.43
049	EP/PT	1289731.63	817022.09
050	EC/PT	1289804.03	816990.94
051	EP/PT	1289835.90	817069.74
052	EP	1290175.92	816924.46
053	EP	1290173.76	816928.99
054	TPR	1290123.35	816939.32
055	STRIPE	1290060.51	816981.89
056	STRIPE	1289870.13	817072.11
057	EP/PT	1289760.47	817106.88
058	EP	1289762.41	817111.29
059	EC/PT	1289776.91	817084.50
060	EC/PT	1289773.02	817100.80
061	EC/PT	1289769.67	817087.93
062	EC/PT	1289604.25	817045.38
069	EC/PI	1289567.56	817181.24
070	EC/PI	1289545.42	817167.85
071	EC/EP	1289538.55	817051.35
072	EC/EP	1289536.99	816966.18
073	EC/EP	1289601.05	816997.33
074	EC/PT	1289651.45	816972.55
075	EC/EP	1289732.25	817081.61
076	EC	1289639.68	817075.88
078	BM A	1289586.76	816914.85
079	BM C	1289542.30	817085.51

- NOTES:
- HORIZONTAL CONTROL POINTS BASED ON AN ASSUMED COORDINATE SYSTEM AND DO NOT LIE WITHIN STATE PLANE COORDINATES.
 - SURVEYOR TO REFERENCE PROVIDED BENCHMARKS IN ESTABLISHING THE COORDINATE SYSTEM FOR THE SITE.

NORTH

0 10 20 40 60
GRAPHIC SCALE IN FEET
FULL SIZE: 1" = 20'
HALF SIZE: 1" = 40'

LEGEND AND ABBREVIATIONS

PROP. REFLECTIVE PAVEMENT MARKER
LP LIGHT POLE
TYP. SQUARE FEET
ROW PAVING, GRADING AND DRAINAGE
CONC. CONCRETE

PROPOSED CONCRETE PAVEMENT SIDEWALK & PADS
ASPHALT PAVEMENT
BOLLARD LIGHTING
LIGHT POLE, SEE PHOTOMETRIC PLANS FOR DETAILS
EXISTING PROPERTY/ROW LINE
EXISTING EASEMENTS
PROPOSED BUFFERS

NOTICE: The information in this document was prepared by ATKINS, Inc. While ATKINS has taken all reasonable steps to ensure the accuracy of the information contained in this document, it cannot guarantee that changes or alterations to this document will not be made by persons other than ATKINS personnel after the document leaves the possession of ATKINS. Changes or alterations may be made and result in damage to property, personal injury or death. If verification of the information contained in this document is needed, contact should be made directly with ATKINS.

This document must be compared to the original hard copy, with certified read used if applicable, in order to ensure the accuracy of the information contained herein and to ensure that no changes, alterations or modifications have been made to the document. No reliance should ever be made on a reproduction transmitted or received by computer or other electronic means unless it is that compared to the original. ATKINS makes no warranties, express or implied, concerning the accuracy of the information contained in any document transmitted or received by computer or other electronic means.

1	11/7/18	BREVARD COUNTY COMMENTS	CP	JL
2	12/10/18	BREVARD COUNTY COMMENTS	CP	JL
3	03/04/19	BREVARD COUNTY COMMENTS	CP	JL
4	03/24/19	BREVARD COUNTY COMMENTS	CP	JL
5	09/30/19	PER CLIENT COMMENTS	CP	JL

Rev	Date	Description	By	Check

Drawing Status: **FOR PERMITTING** Submittal: **\$0**

ATKINS CORPORATE OFFICE: 4030 W. BOY SCOUT BLVD TAMPA, FLORIDA 33607
 LOCAL OFFICE: 7175 MURRELL ROAD MELBOURNE, FL 32940
 TEL. 321.242.4942 FAX. 321.242.6101 www.atkinsglobal.com

Copyright © Atkins Limited (2017)

CUMBERLAND FARMS INC.
150 FLORIAN ROAD
WESTBOROUGH, MA 01581

Project Title: **MICCO ROAD & US-1 BREVARD COUNTY, FL 100060192**

Drawing Title: **HORIZONTAL CONTROL PLAN**

Scale	Designed	Drawn	Checked	Authorized
	JL	DF		
Original Size	Date	Date	Date	Date
ARCH D				
Drawing Number	Revision			
CFG04.2				

ENTIRE SHEET REVISED PER LAYOUT REVISIONS