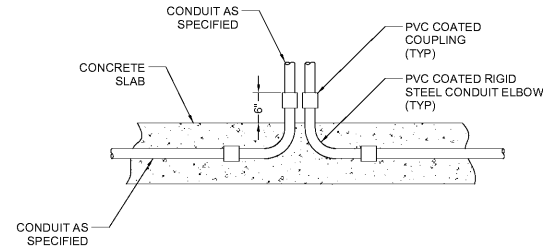
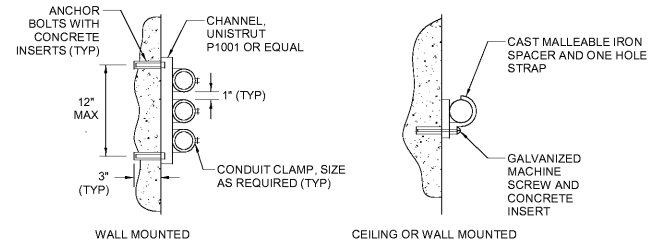


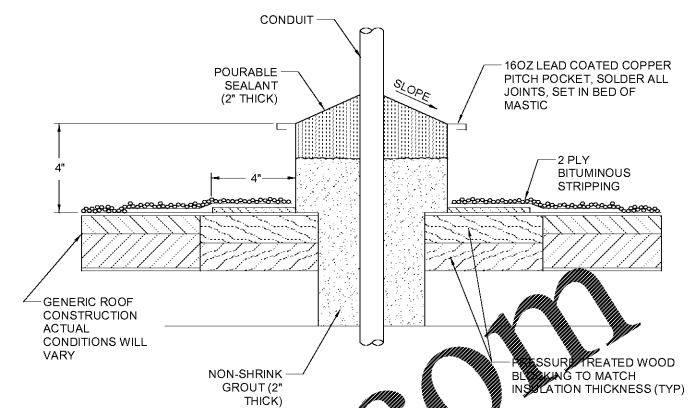
1 CONDUIT PENETRATION
1/8" = 1'-0"



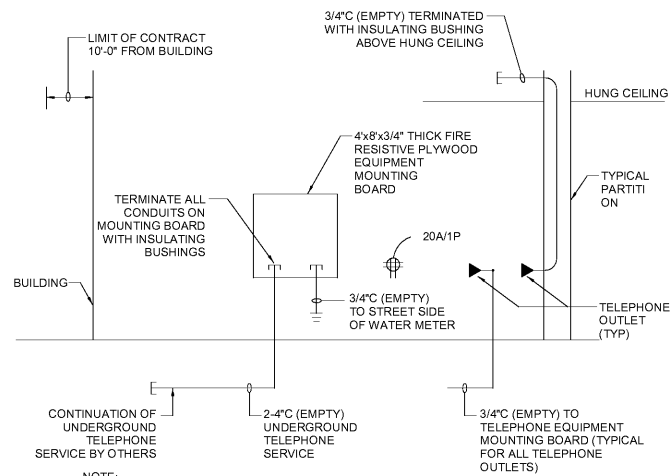
2 CONDUIT STUB-UP
1/8" = 1'-0"



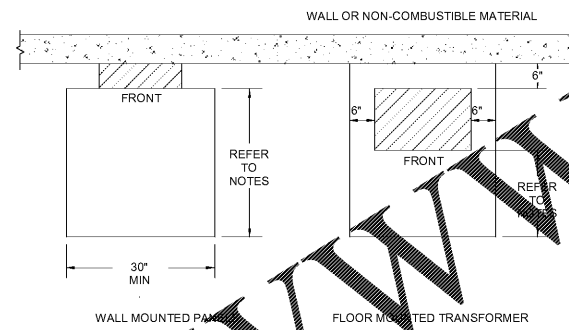
3 CONDUIT MOUNTING
1/8" = 1'-0"



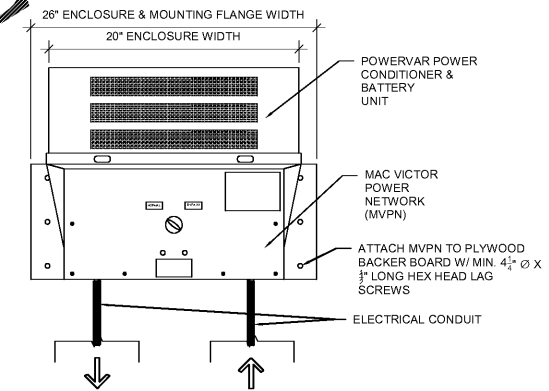
4 CONDUIT ROOF PENETRATION
1/8" = 1'-0"



5 TELEPHONE SYSTEM RISER
1/8" = 1'-0"



6 CLEARANCES FOR ELECTRIC EQUIPMENT
1/8" = 1'-0"



7 MAC VICTOR UPS
1/8" = 1'-0"

5 TELEPHONE SYSTEM RISER
1/8" = 1'-0"

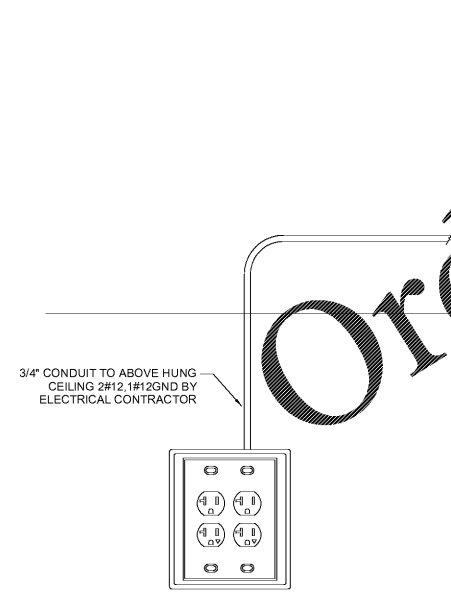
NOTE:
1. ALL TELEPHONE SYSTEM WIRING SHALL BE BY THE TELEPHONE COMPANY.
2. REFER TO FLOOR PLANS FOR EXACT LOCATIONS AND QUANTITIES OF ALL TELEPHONE OUTLETS.
3. PROVIDE NYLON PULL CORD IN ALL EMPTY CONDUITS.

NOTE:
* MINIMUM WORKING CLEARANCE IN THE DIRECTIONS OF ACCESS TO LIVE PARTS AS REQUIRED BY NEC 110.26(A), CONDITION 2:
- 3' FOR 0-150 VOLT TO GROUND ELECTRIC EQUIPMENT.
- 3' FOR 150-600 VOLT TO GROUND ELECTRIC EQUIPMENT.
THE MINIMUM HEADROOM OF WORKING SPACE SHALL BE 6'-1/2'.
PANELS INCLUDE: POWER PANELS, CONTACTORS, CONTROL CABINETS, DISCONNECT SWITCHES, MOTOR STARTERS, TIME CLOCK AND SIMILAR ELECTRIC EQUIPMENT.

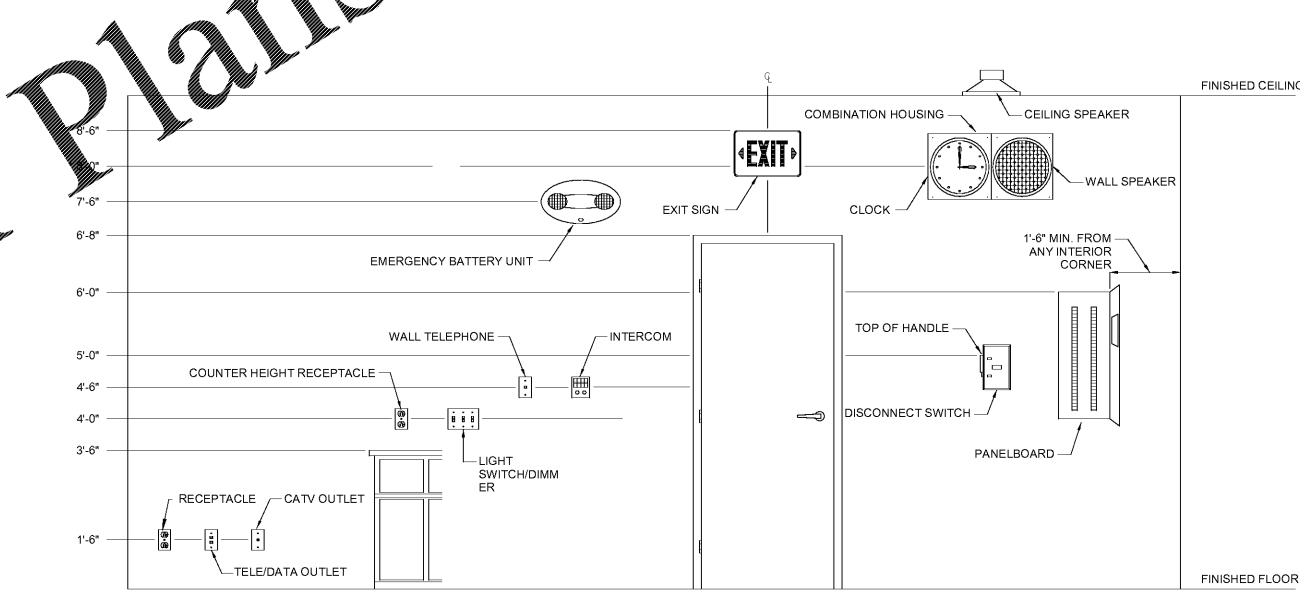
NOTE:
REFER TO MANUFACTURER'S INSTALLATION GUIDE FOR ADDITIONAL INFORMATION.

3/4" CONDUIT TO ABOVE HUNG CEILING 2#12, 1#12 GND BY ELECTRICAL CONTRACTOR

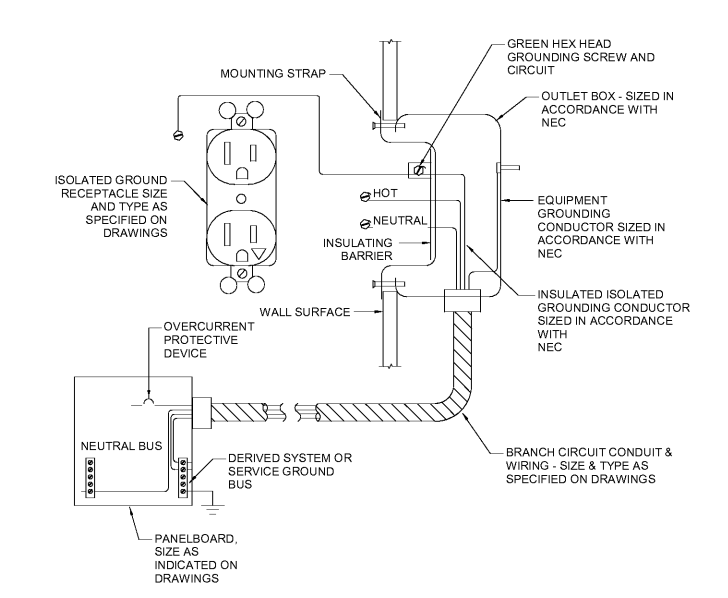
8 TYPICAL ATM STATION
1/8" = 1'-0"



9 DEVICE MOUNTING HEIGHT
1/8" = 1'-0"



10 ISOLATED GROUND RECEPTACLE WIRING
1/8" = 1'-0"



STIPULATION FOR REUSE:
THIS DOCUMENT IS THE PROPERTY OF HARRISON FRENCH & ASSOCIATES, LTD. IT IS TO BE USED ONLY FOR THE PROJECT AND SITE SPECIFICALLY IDENTIFIED ON THE DRAWINGS. IT IS NOT TO BE REPRODUCED, COPIED, OR TRANSMITTED IN ANY FORM OR BY ANY MEANS, WITHOUT THE WRITTEN PERMISSION OF HARRISON FRENCH & ASSOCIATES, LTD. ANY UNAUTHORIZED REUSE OR MODIFICATION OF THIS DOCUMENT IS STRICTLY PROHIBITED AND WILL BE CONSIDERED A VIOLATION OF THE PROFESSIONAL ETHICS OF THE ENGINEERING AND ARCHITECTURAL PROFESSIONS.

Camberland
Store Number: 9747
8090 US 1 & MICCO ROAD
MICCO, FL
JOB NUMBER: 41-17-20190

ISSUE BLOCK		
1	CLIENT REVIEW	08/30/19
2	100%	09/27/19

CHECKED BY: JAC
DRAWN BY: JLB
DOCUMENT DATE:

8/20/2019 12:31:01 PM
 C:\Users\jfrank\OneDrive\Documents\2019 Plans\Projects\41-17-20190_Mico, FL_Atm Cafe_Machine\41-17-20190_10_Elec_Details.dwg
 2020-09-01 12:31:01 PM