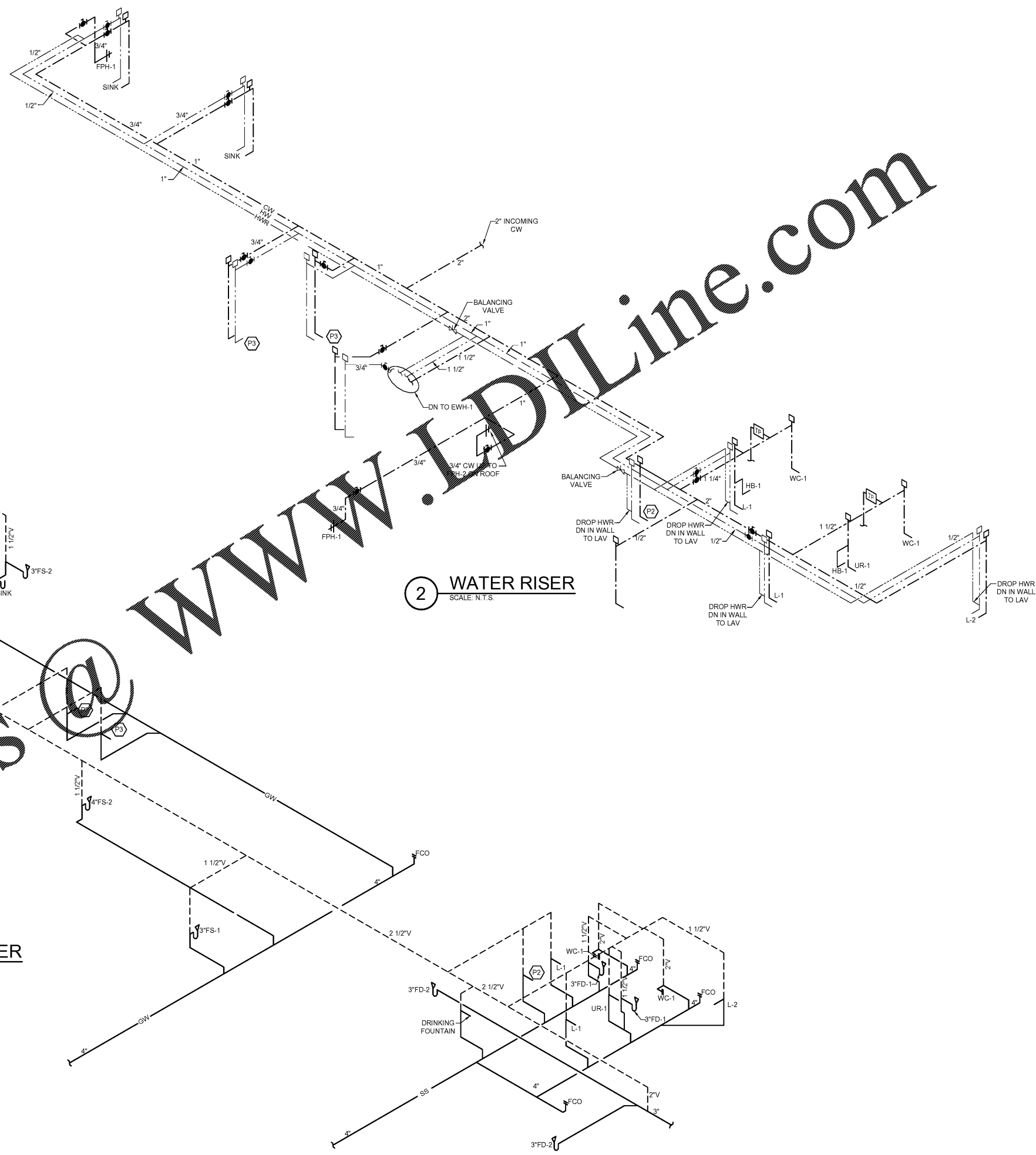


PLUMBING EQUIPMENT CONNECTION SCHEDULE

MARK	FIXTURE	BRANCH SIZES (MIN.)					ROUGH-IN REQUIREMENTS	NOTES
		FW	DFW	CW	HW	WASTE		
REFRIGERATION EQUIPMENT SCHEDULE								
B12	SANDWICH CASE					1" (IDW)	E	
B13	GRAB N' GO CASE					1" (IDW)	E	
CHILL ZONE EQUIPMENT SCHEDULE								
E-1	ICE/BEVERAGE DISPENSER	3/8"	(2) 3/8"			3/4" (IDW)	G, H	
E-3	FROZEN MILKSHAKE BLENDER		1/4"			3/4" (IDW)	G, H	
E-4	FROZEN BEVERAGE DISPENSER	3/8"					G	
COFFEE EQUIPMENT SCHEDULE								
F-2	ICED COFFEE/TEA BREWER		1/4"				G	
F-5	6 FLAVOR CAPPUCCINO MACH/WHOT WATER		1/4"				G	
F-6	SPECIALTY COFFEE MACHINE (FUTURE)		3/8"			2" (IDW)	G, H	
F-9	SINGLE SOFT HEAT COFFEE BREWER		1/4"				G	
F-10	DUAL SOFT HEAT COFFEE BREWER		1/4"				G	
F-11	COUNTERTOP ICE DISPENSER (FUTURE)					3/4" (IDW)	H	
F-13	NITRO COFFEE DISPENSER (FUTURE)		3/8"				G	
F-15	FROZEN COFFEE BEVERAGE		1/4"				G	
F-16	ICE MAKER/DISPENSER		1/4"			3/4" (IDW)	G, H	
F-17	ICE MAKER/STORAGE BIN		3/8"			1/2" (IDW)	E, G	
F-20	SMOOTHIE MACHINE & RINSE STATION (FUTURE)		3/8"			1 1/8" (IDW)	G, H	
PLUMBING EQUIPMENT SCHEDULE								
P-1	3-BAY SERVICE SINK		1/2"	1/2"	3"	1 1/2"	WATER: 12" AFF D, E, F	
P-3	UTILITY HAND SINK		1/2"	1/2"	1 1/2"	1 1/4"	WATER: 18" AFF B, C	
SINK	PROVIDED BY MILLWORK VENDOR		1/2"	1/2"	2"	1 1/4"	B, C	
FAUCET	PROVIDED BY MILLWORK VENDOR	1/2"						

- GENERAL NOTES (ALL EQUIPMENT):
- EQUIPMENT FURNISHED BY CUMBERLAND FARMS. ROUGH-IN & FINAL CONNECTIONS BY CONTRACTOR.
- NOTES:
- PROVIDE SHUT-OFF VALVES.
 - PROVIDE CHROME PLATED P-TRAP AND ESCUTCHEON.
 - PROVIDE CHROME PLATED ANGLE SUPPLY, FLEXIBLE RISER, AND WHEEL HANDLE WITH ESCUTCHEON.
 - SINK FAUCETS PROVIDED WITH INTEGRAL CHECK VALVES.
 - PROVIDE FULL-SIZE DRAIN LINE FROM EQUIPMENT. END OVER FLOOR SINK WITH 2" AIR GAP.
 - IF PLUMBING PLAN AND RISER SHOWS THE SINK INDIRECTLY CONNECTED TO FLOOR SINK, THEN WASTE ROUGH-IN HEIGHT AND VENT SIZE DO NOT APPLY.
 - PROVIDE BALL VALVE AND WATTS SD-2 CHECK VALVE ON FILTERED WATER SUPPLY. PROVIDE FEMALE NPT VALVE DOWNSTREAM OF VB FOR CONNECTION TO EQUIPMENT.
 - PROVIDE FULL SIZE DRAIN LINE FROM EQUIPMENT. END OVER HUB DRAIN IN MILLWORK.



Order Plans @

WWW.IDILine.com

HFA
HARRISON FRENCH & ASSOCIATES, LTD.
1479.273.7780
1705 S. Walton Blvd., Suite 3
Bentonville, Arkansas 72712
www.hfa-ae.com

STIPULATION FOR REUSE
THIS DRAWING WAS PREPARED FOR MICCO, INC. SPECIFIC TO THE PROJECT LISTED BELOW AND IS NOT TO BE REPRODUCED OR USED FOR ANY OTHER PROJECT WITHOUT THE WRITTEN PERMISSION OF HARRISON FRENCH & ASSOCIATES, LTD. ENGINEERS' REPRODUCTION OF THIS PROJECT IS NOT AUTHORIZED AND WILL BE CONSIDERED A VIOLATION OF THE PROFESSIONAL ENGINEERING ACT.

Cumberland
Store Number: 9747
8090 US 1
Micco, FL 32976
JOB NUMBER: 41-17-00190

ISSUE BLOCK	
CLIENT REVIEW	08/30/19
100%	09/27/19

CHECKED BY: BRT
DRAWN BY: BRT

PLUMBING RISERS
SHEET: P600