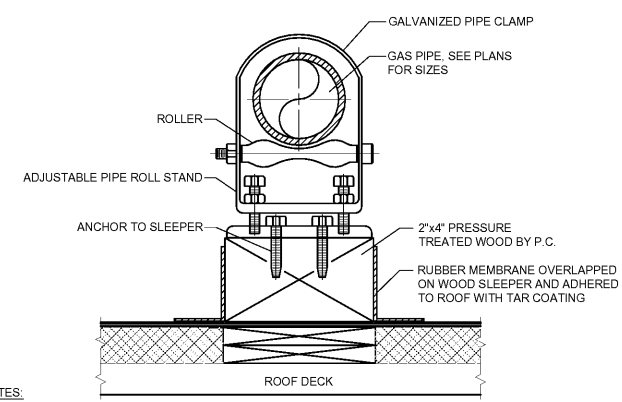


**GENERAL NOTES**

- EQUIPMENT SHOWN FOR REFERENCE ONLY. REFER TO DRAWING R140 FOR EQUIPMENT INFO.
- ALL MECHANICAL EQUIPMENT SHALL BE INSTALLED ACCORDING TO MANUFACTURER'S GUIDELINES AND INSTALLATION CLEARANCES.
- BAROMETRIC RELIEF HOOD TO BE INSTALLED AS HIGH AS POSSIBLE ON VERTICAL FACE OF THE RETURN DUCT OF EACH SYSTEM.

**(X) KEYNOTES**

- RTU CLEARANCES ACCORDING TO MANUFACTURER'S INSTALLATION INSTRUCTIONS (TYP. 5'-0").
- FOR COOLED CONDENSING UNITS SHOWN FOR COORDINATION PURPOSES. REFER TO DRAWING R140 FOR EQUIPMENT INFO (TYPICAL).
- BAROMETRIC RELIEF DAMPERS ARE SHIPPED LOOSE WITH THE RTU TO BE FIELD INSTALLED BY THE GC HIGH ON RETURN DUCT.
- EXTEND FULL SIZE SUPPLY/RETURN PLENUM THRU EXTERIOR WALL. COORDINATE OPENING WITH GC REFERENCE SHEET M100 FOR DUCT SIZES INSIDE BUILDING.
- SLOPE INSULATION ON TOP OF DUCT AT 1/4" PER FOOT TO SHED WATER AWAY FROM BUILDING.
- CONTINUE EXTERIOR BOARD INSULATION 6" INTO THE BUILDING. PROVIDE TAPE INSULATION WITH BOARD INSULATION TO PROVIDE CONTINUOUS VAPOR BARRIER.



**NOTES:**

- SEE PLANS FOR GAS PIPING SIZES AND PIPE RUNS ON ROOF.
- PC SHALL FURNISH AND INSTALL ALL PIPE SUPPORTS AND HARDWARE, AND SHALL SECURE TO ROOF SLEEPERS. ROOF SLEEPERS SHALL BE SECURED TO THE ROOF BY RUBBER MEMBRANE OVERLAPPED ON WOOD AND ADHERED TO ROOF WITH TAR COATING.
- ROOF SLEEPERS SHALL BE PROVIDED AT 10'-0" INTERVALS AND AT EVERY CHANGE OF PIPE DIRECTION.
- ALL EXTERIOR GAS PIPING, FITTINGS, AND VALVES SHALL BE PAINTED FOR CORROSION RESISTANCE. APPLYING ONE COAT OF RUST PROTECTION PRIMER AND ONE COAT OF RUST PROTECTION PAINT. COLOR YELLOW. ALL GAS PIPING, FITTINGS, AND VALVES SHALL BE CLEANED AND PREPARED FOR PAINT ACCORDANCE WITH THE PAINT MANUFACTURER'S RECOMMENDATIONS. ALL PAINT SHALL BE APPLIED IN ACCORDANCE WITH THE PAINT MANUFACTURER'S RECOMMENDATIONS.

**2 ROOF SLEEPER DETAIL**  
 N.T.S. 11/21/19

**STIPULATION FOR REUSE**  
 THIS DRAWING WAS PREPARED FOR MICCO, INC. SPECIFIC TO THE PROJECT LISTED BELOW AND IS NOT SUITABLE FOR USE ON A DIFFERENT PROJECT. ANY REUSE OR MODIFICATION OF THIS DRAWING FOR ANY PROJECT REGARDING THE SERVICES OF THIS ENGINEER, REPRODUCTION OF THIS PROJECT IS NOT AUTHORIZED AND WILL BE CONSIDERED A VIOLATION OF THE PROFESSIONAL ENGINEER'S ETHICS AND THE LAW.

**Cumberland**  
 Store Number: 9747  
 8090 US 1  
 Micco, FL 32976  
 JOB NUMBER: 41-17-00190

**ISSUE BLOCK**

CLIENT REVIEW	08/30/19
100%	09/27/19

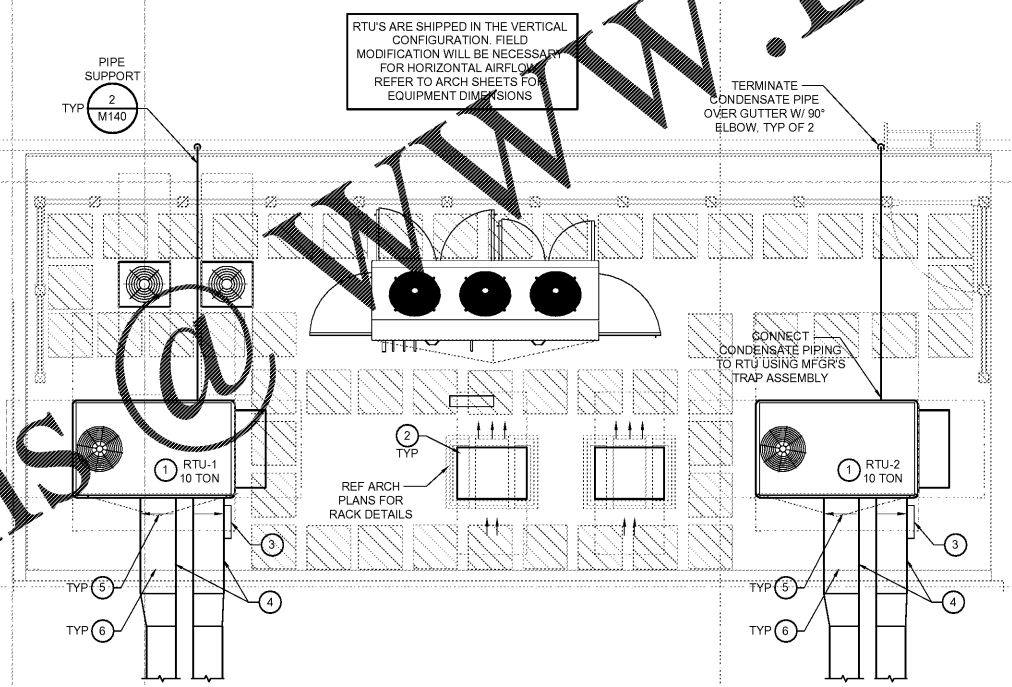
CHECKED BY: BRT  
 DRAWN BY: BRT

HVAC ROOF PLAN AND DETAILS

SHEET: **M140**

Order Plans @ [www.LDOnline.com](http://www.LDOnline.com)

**1 HVAC - ROOF PLAN**  
 SCALE: 1/4"=1'-0"



RTU'S ARE SHIPPED IN THE VERTICAL CONFIGURATION. FIELD MODIFICATION WILL BE NECESSARY FOR HORIZONTAL AIRFLOW. REFER TO ARCH SHEETS FOR EQUIPMENT DIMENSIONS.