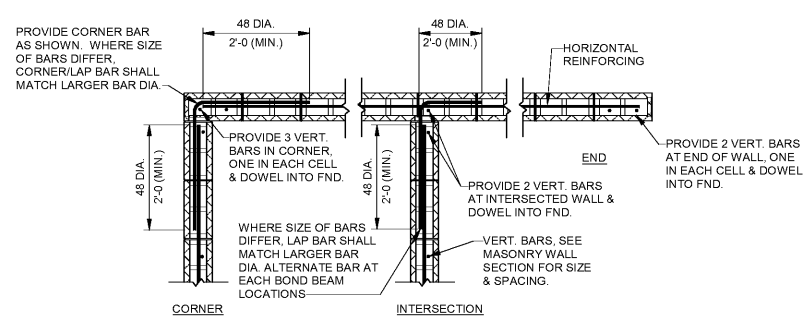
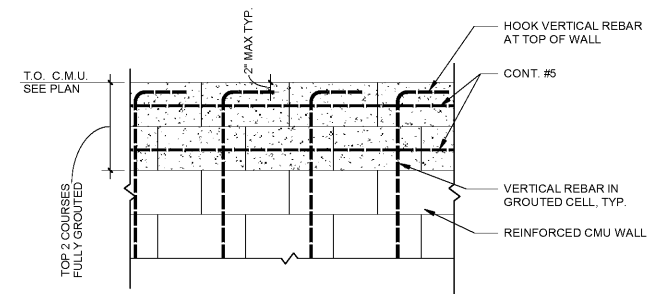


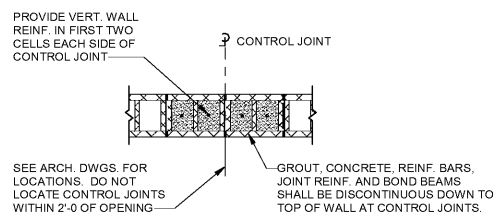
1 TYPICAL BOND BEAM STEP DETAIL
1/2" = 1'-0"



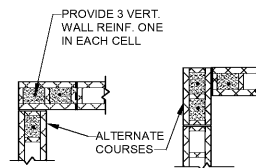
2 PLAN DETAIL OF HORIZ. REINF. AT 8" CMU BOND BEAM
1/2" = 1'-0"



3 BENTS IN VERT. REBAR DETAIL AT TOP OF WALL
3/4" = 1'-0"



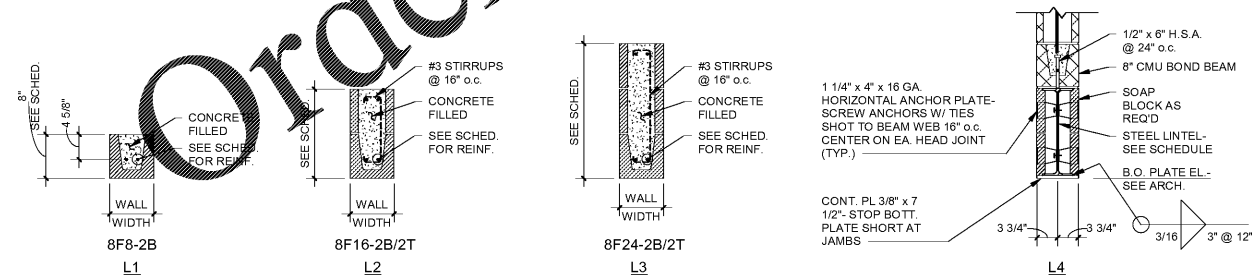
4 TYPICAL CMU WALL VERT. CONTROL JOINT DETAIL
1/2" = 1'-0"



5 TYPICAL CMU WALL CORNER DETAIL
1/2" = 1'-0"

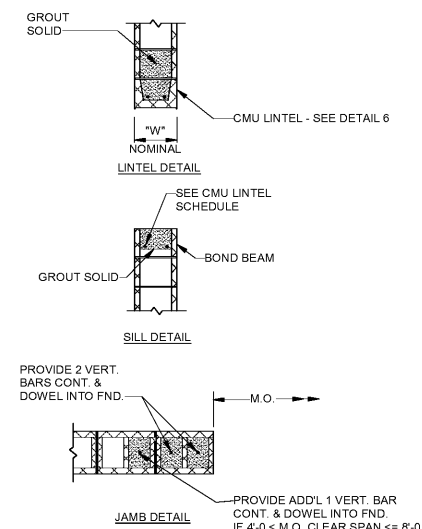
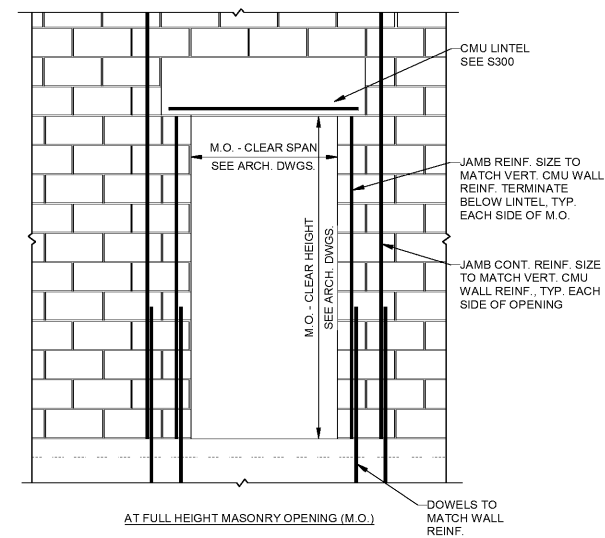
CMU LINTEL SCHEDULE				
LINTEL MARK	WALL THICKNESS	CLEAR SPAN	LINTEL DEPTH	REINFORCING
L1	8"	UP TO 4'-0"	8"	(2) #5 BOTTOM
L2	8"	UP TO 6'-4"	16"	(2) #5 TOP & BOTTOM
L3	8"	UP TO 8'-0"	24"	(2) #5 TOP & BOTTOM
L4	8"	UP TO 16'-0"	16"	W16x40

- NOTES:
- GROUTED LINTEL (THROUGH) BLOCKS SHALL TYPICALLY EXTEND BEYOND FACE OF OPENING EACH SIDE UNLESS OTHERWISE NOTED. (THE FIRST VERTICAL CELL ON EACH SIDE OF THE OPENING SHALL CONTAIN #4 AND BE FILLED WITH GROUT UP TO THE LINTEL BEARING LEVEL.)
 - OPENINGS SHALL HAVE THE FIRST VERTICAL CELL EACH SIDE FILLED WITH GROUT UP TO THE LINTEL BEARING LEVEL.
 - LINTELS SCHEDULED AS 16" HIGH MAY BE EITHER 16" DEEP LINTEL UNIT OR OPEN-BOTTOM ONES OF 8" CLOSED-BOTTOM UNIT.
 - CONSTRUCTION JOINT SHALL NOT BE LOCATED WITHIN BEARING WIDTH OF CMU LINTEL.
 - FILL SHALL BE MINIMUM 3,000 P.S.I. PEA GRAVEL CONCRETE OR GROUT.
 - DO NOT SPLICE LINTEL BOTTOM REINFORCING WITHOUT SPECIFIC APPROVAL OF THE ENGINEER OF RECORD.



6 CMU & STEEL LINTEL SCHEDULES
3/4" = 1'-0"

MASONRY REBAR LAP SCHEDULE							
SIZE	#3	#4	#5	#6	#7	#8	#9
LAP	18"	24"	30"	36"	42"	48"	54"



7 TYPICAL CMU MASONRY OPENING (M.O.) WITH CMU LINTEL
1/2" = 1'-0"

STIPULATION FOR REUSE:
THIS DRAWING WAS PREPARED FOR
MICCO, INC. BEING SITE AT
VSH # 17135 AND IS NOT
TO BE REUSED FOR ANY OTHER
PROJECT SITE OR A REPRINT
WITHOUT THE WRITTEN PERMISSION
OF HARRISON FRENCH & ASSOCIATES,
INC. ENGINEERS. REPRODUCTION OF THIS
PROJECT IS NOT AUTHORIZED AND MAY
BE CONSIDERED AS A VIOLATION OF THE
ENGINEERING PROFESSIONAL BOARD OF
REGULATIONS.

Cumberland
A R M S
Store # 9747
VSH # 17135
Oracle # FL1735
8090 US 1 AND MICCO RD
MICCO, FL 32976
JOB NUMBER: 41-17-00190

ISSUE BLOCK	
CLIENT REVIEW	08/30/19
100%	09/27/19

CHECKED BY: GGB
DRAWN BY: AHM

MASONRY WALL
DETAILS

SHEET:
S300