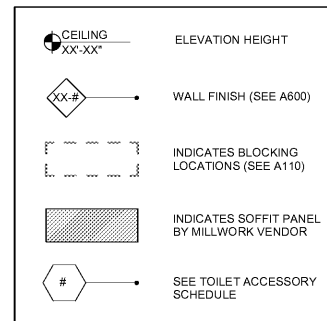
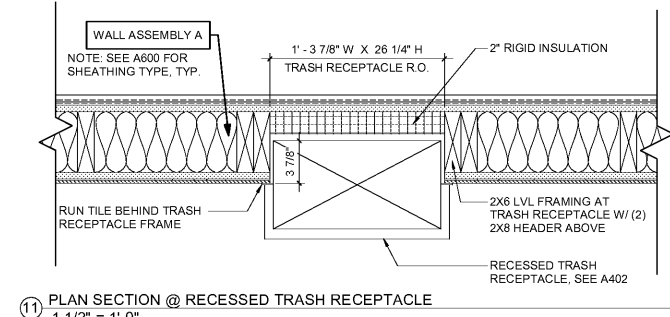


INTERIOR ELEVATION LEGEND

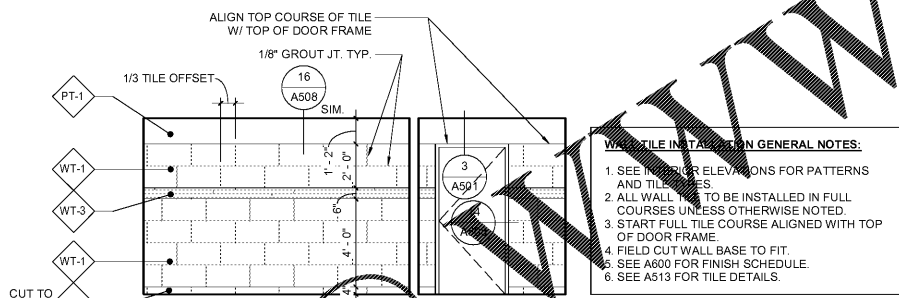


TOILET ACCESSORY SCHEDULE

MARK	DESCRIPTION	MANUFACTURER	MODEL #	MOUNTING HEIGHT	DESCRIPTION / REMARKS
1	COAT HOOK	ROCKWOOD	806 X US26D	48" AFF	FURNISHED AND INSTALLED BY GC
2	TOILET PAPER HOLDER	GEORGIA PACIFIC	MODEL PER CFI MERCHANDISING	24" C.L. OF UNIT	-
3	PAPER TOWEL DISPENSER	KIMBERLY CLARKE	MODEL PER CFI MERCHANDISING	42" TO B.O. UNIT, U.O.N. ON A402	COLOR: SMOKE GREY
4	NOT USED	-	-	-	-
5	NOT USED	-	-	-	-
6	MIRROR (36" X36")	STROJNY	CUSTOM	39-1/2" TO B.O. REFLECTIVE SURFACE	-
7	MOP HOLDER	BOBRICK	MODEL PER CFI MERCHANDISING	48" AFF	-
8	NOT USED	-	-	-	-
9	NOT USED	-	-	-	-
10	GRAB BAR	BOBRICK	B5806-42	33"-36" TO TOP OF GRAB BAR	1-1/2" DIA. W/ PEENED GRIP. NOTE: IN CT MOUNT SIDE GRAB BAR 2'-10" AFF.
11	BABY CHANGING STATION	KOALA KARE	KB101-00	5' - 2 1/2" T.O. UNIT	PROVIDE BLOCKING PER MFG. REQ.
12	TOILET PARTITION	MARLITE	HIGH DENSITY POLYMER	PER MFG. SUGG.	#26 SANDSTONE
13	VERTICAL GRAB BAR	BOBRICK	B-6806 X 18"	39"-41" TO B.O. BAR	1 1/2" W/ PEENED GRIP
14	TOILET SEAT COVER DISPENSER	GEORGIA PACIFIC	MODEL PER CFI MERCHANDISING	48" TO OPERABLE PART	-
15	AIR FRESHENER DISPENSER	RUBBERMAID	MODEL PER CFI MERCHANDISING	BOTTOM @ 7'-2"	COLOR: WHITE
16	RECESSED WASTE RECEPTACLE	BOBRICK	B-43644	T.O. UNIT @ 3'-0"	STAINLESS STEEL
17	MIRROR (24" X 36")	STROJNY	CUSTOM	39 1/2" TO B.O. REFLECTIVE SURFACE	STD 1/4" MIRROR. INSTALLED OVER WALL HUNG SINKS
18	SWING-UP GRAB BAR (CT ONLY)	BOBRICK	B-4998	36" TO T.O. GRAB BAR, 15 2/3" FROM C.L. OF TOILET	CT ONLY
19	EMERGENCY CALL SYSTEM (CT ONLY)	-	-	-	FURNISHED AND INSTALLED BY GC. SEE ELECTRICAL DWGS FOR SPEC - CT ONLY
20	SANITARY NAPKIN DISPOSAL (SURFACE)	BOBRICK	B-270	4" TO T.O. UNIT	WOMEN'S ROOM ONLY

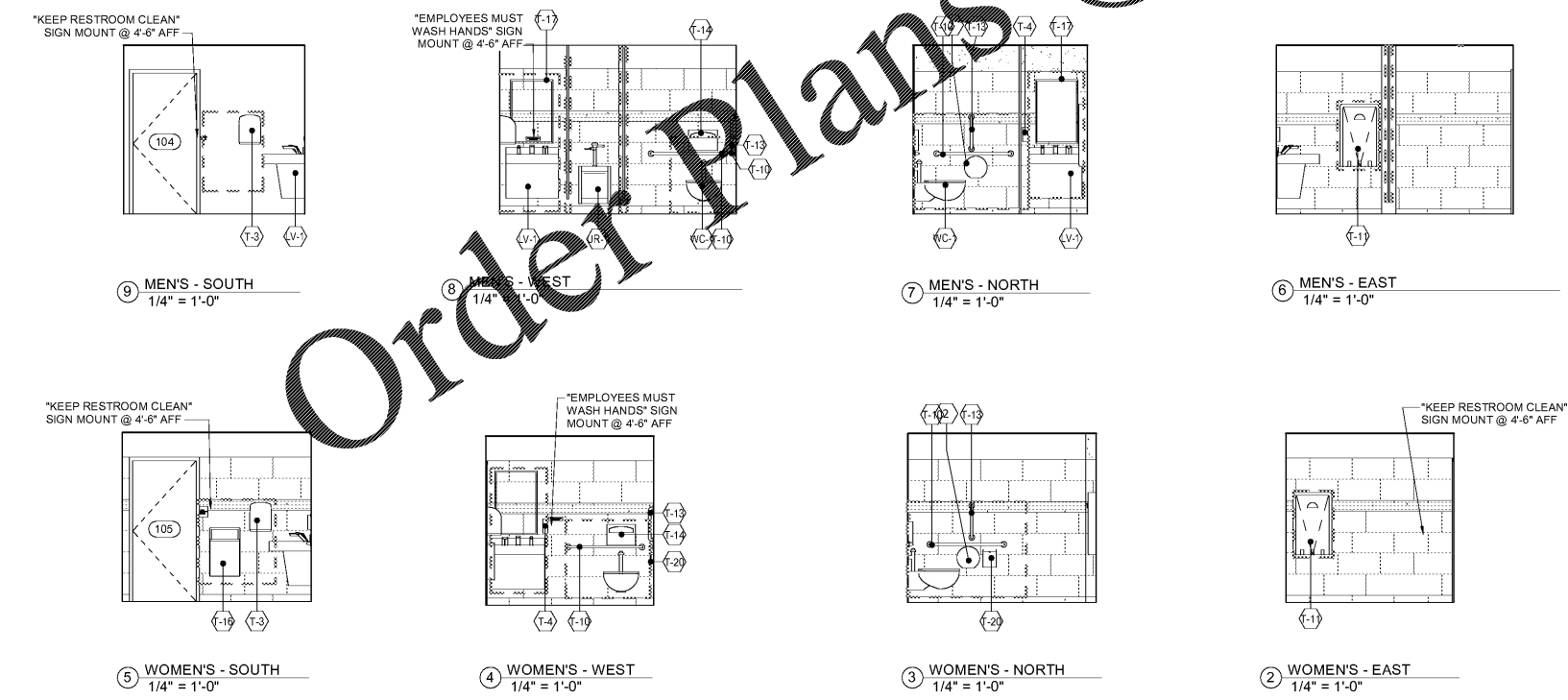
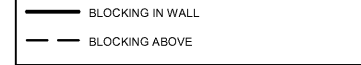


11 PLAN SECTION @ RECESSED TRASH RECEPTACLE
1 1/2" = 1'-0"

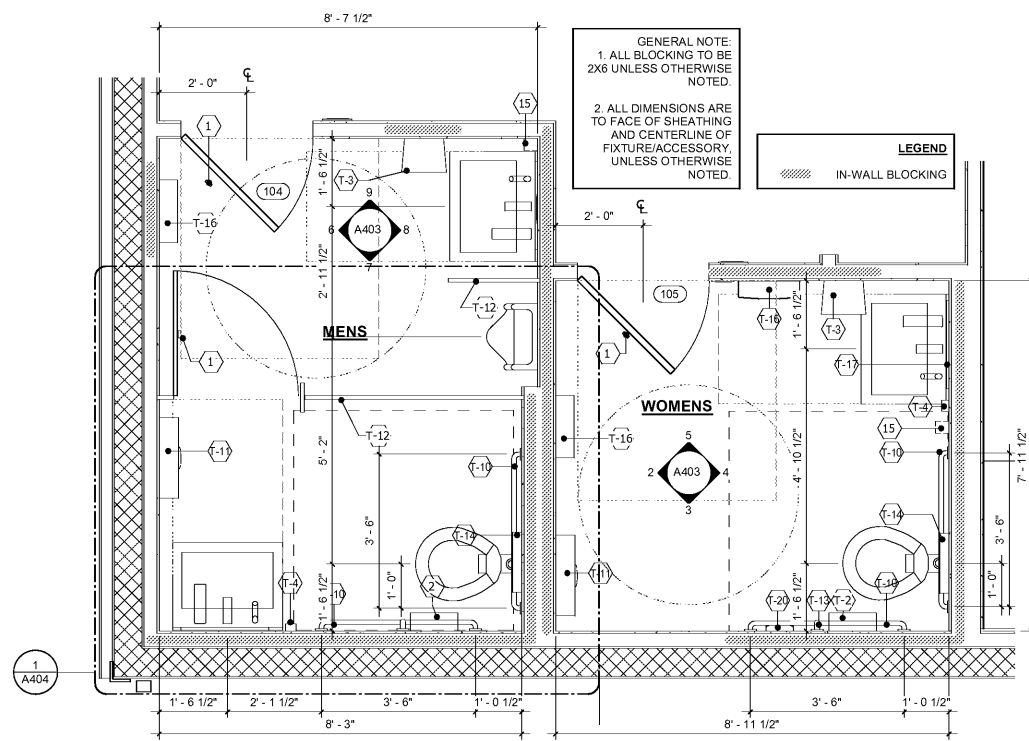


10 GENERIC TILE COURSING DTL.
1/4" = 1'-0"

BLOCKING PLAN LEGEND



1 ENLARGED RESTROOMS PLAN
1/2" = 1'-0"



HFA
HARRISON FRENCH & ASSOCIATES, LTD.
508.528.0770
31 Hayward Street
Franklin, Massachusetts 02038
www.hfa-ae.com

STIPULATION FOR REUSE
THIS DOCUMENT IS THE PROPERTY OF HARRISON FRENCH & ASSOCIATES, LTD. IT IS TO BE USED ONLY FOR THE PROJECT AND SITE SPECIFICALLY IDENTIFIED ON THE TITLE SHEET. IT IS NOT TO BE REPRODUCED, COPIED, OR TRANSMITTED IN ANY FORM OR BY ANY MEANS, ELECTRONIC OR MECHANICAL, INCLUDING PHOTOCOPYING, RECORDING, OR BY ANY INFORMATION STORAGE AND RETRIEVAL SYSTEM, WITHOUT THE WRITTEN PERMISSION OF HARRISON FRENCH & ASSOCIATES, LTD. THE USER OF THIS DOCUMENT AGREES TO HOLD HARRISON FRENCH & ASSOCIATES, LTD. HARMLESS FROM AND AGAINST ALL LIABILITY, INCLUDING REASONABLE ATTORNEY'S FEES AND COSTS, FOR ANY AND ALL DAMAGES, LOSSES, AND EXPENSES, INCLUDING REASONABLE ATTORNEY'S FEES AND COSTS, INCURRED BY HARRISON FRENCH & ASSOCIATES, LTD. OR ANY OF ITS AFFILIATES, AGENTS, OR EMPLOYEES, IN CONNECTION WITH THE REUSE OF THIS DOCUMENT FOR ANY PURPOSE OTHER THAN THAT AUTHORIZED BY HARRISON FRENCH & ASSOCIATES, LTD.

Cumberland
Store Number: 9747
8090 US 1
Mico, FL 32976
JOB NUMBER: 41-17-00190

ISSUE BLOCK

CLIENT REVIEW	08/30/19
100%	09/27/19

CHECKED BY: JEO
DRAWN BY: LT
DOCUMENT DATE: 9/27/19

ENLARGED RESTROOM PLANS, ELEVATIONS & DETAILS

SHEET: **A403**