

STIPULATION FOR REUSE
 THESE DRAWINGS ARE THE PROPERTY OF HARRISON FRENCH & ASSOCIATES, LTD. AND ARE NOT TO BE REPRODUCED OR TRANSMITTED IN ANY FORM OR BY ANY MEANS, ELECTRONIC OR MECHANICAL, INCLUDING PHOTOCOPYING, RECORDING, OR BY ANY INFORMATION STORAGE AND RETRIEVAL SYSTEM, WITHOUT THE WRITTEN PERMISSION OF HARRISON FRENCH & ASSOCIATES, LTD. THIS STIPULATION SHALL APPLY TO ALL REUSE OF THESE DRAWINGS, INCLUDING REUSE BY ARCHITECTS, ENGINEERS, CONTRACTORS, AND OTHERS. ANY REUSE OF THESE DRAWINGS WITHOUT THE WRITTEN PERMISSION OF HARRISON FRENCH & ASSOCIATES, LTD. IS UNAUTHORIZED AND MAY BE CONSIDERED AS A VIOLATION OF APPLICABLE LAWS.

Cumberland
 Store Number: 9747
 8090 US 1
 Micco, FL 32976
 JOB NUMBER: 41-17-00190

ISSUE BLOCK	
CLIENT REVIEW	08/30/19
100%	09/27/19

CHECKED BY: JEO
 DRAWN BY: ZC
 DOCUMENT DATE: 9/27/19

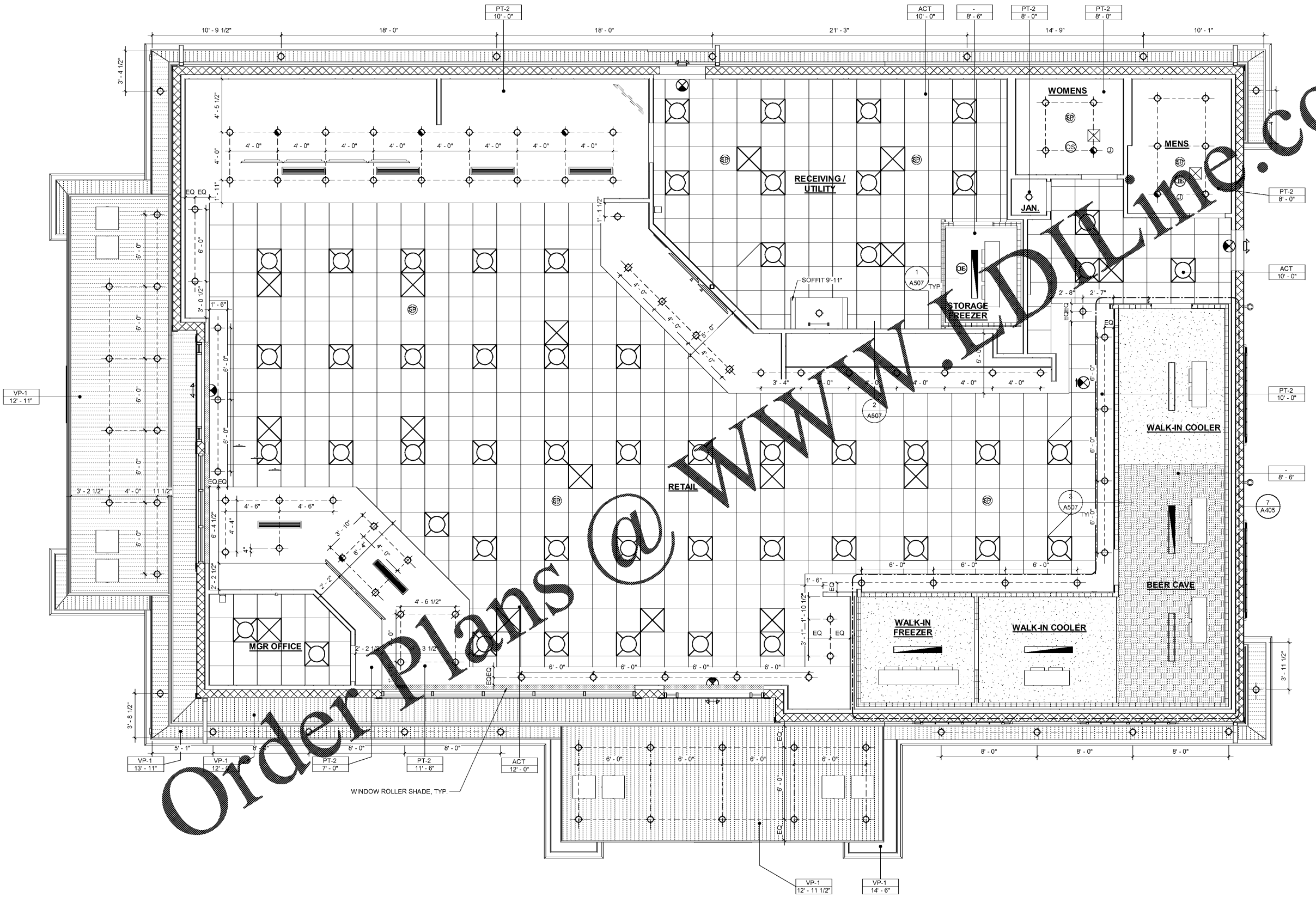
REFLECTED
 CEILING PLAN

SHEET:
A130

- GENERAL NOTES**
- ALL CEILING FIXTURE DIMENSIONS ARE TO C.L. U.N.O.
 - REFER TO ELECTRICAL DRAWINGS FOR ADDITIONAL INFORMATION ON LIGHTING AND FIRE ALARM DEVICES
 - REFER TO MECHANICAL DRAWINGS FOR ADDITIONAL INFORMATION ON MECHANICAL DEVICES
 - ITEMS SHOWN IN LEGEND MAY NOT NECESSARILY APPEAR ON RCP.
 - SEE A600 FOR CEILING FINISH SCHEDULE

RCP SYMBOL LEGEND

- RECESSED LED LIGHT
- SURFACE MOUNTED LED STRIP FOR COOLER/FREEZER
- SURFACE MOUNTED LED WRAP
- RECESSED DOWN LIGHT
- BATHROOM WALL MTD. VANITY FIXTURE
- SURFACE MTD. EXTERIOR EMERGENCY LIGHT
- EXIT SIGN
- WALL MTD. MOTION SENSOR
- CEILING MTD. MOTION SENSOR
- CEILING MTD. FA VISUAL DEVICE
- WALL MTD. FA VISUAL DEVICE
- CEILING MTD. FA AUDIBLE VISUAL DEVICE
- SMOKE DETECTOR
- SPEAKER
- SUPPLY DIFFUSER
- 24"x24" RETURN AIR GRILLE
- CUSTOM DROP-DOWN FILTERED RETURN AIR GRILLE PROVIDED BY CFI, INSTALLED BY GC
- 12"x24" RETURN AIR GRILLE
- EXHAUST FAN
- LINEAR SUPPLY DIFFUSER
- WALL MTD. LINEAR SUPPLY DIFFUSER
- WALL MTD. LINEAR SUPPLY DIFFUSER
- CEILING MTD. EVAPORATION FAN
- SURFACE MTD. ROLLER SHADE
- INDICATES SLOPED SOFFIT
- SMOOTH WHITE FRP. (FRP-1)
- VINYL SOFFIT PANELS (VP-1)
- GYPSUM WALLBOARD (GWB)
- SYNTHETIC WOOD PANELING (SWP-1)
- PLAM WOOD PANELING (PWP-1)
- COLOR CHANGING LED STRIP (ABOVE WOOD CEILING)



1 REFLECTED CEILING PLAN
 1/4" = 1'-0"

9/27/2019 4:12:58 PM
 C:\Users\cmf\OneDrive\Documents\9747 Rev\Projects\41-17-00190\Micco_FL_A130.dwg\REFLECTED_CEILING_PLAN.rvt