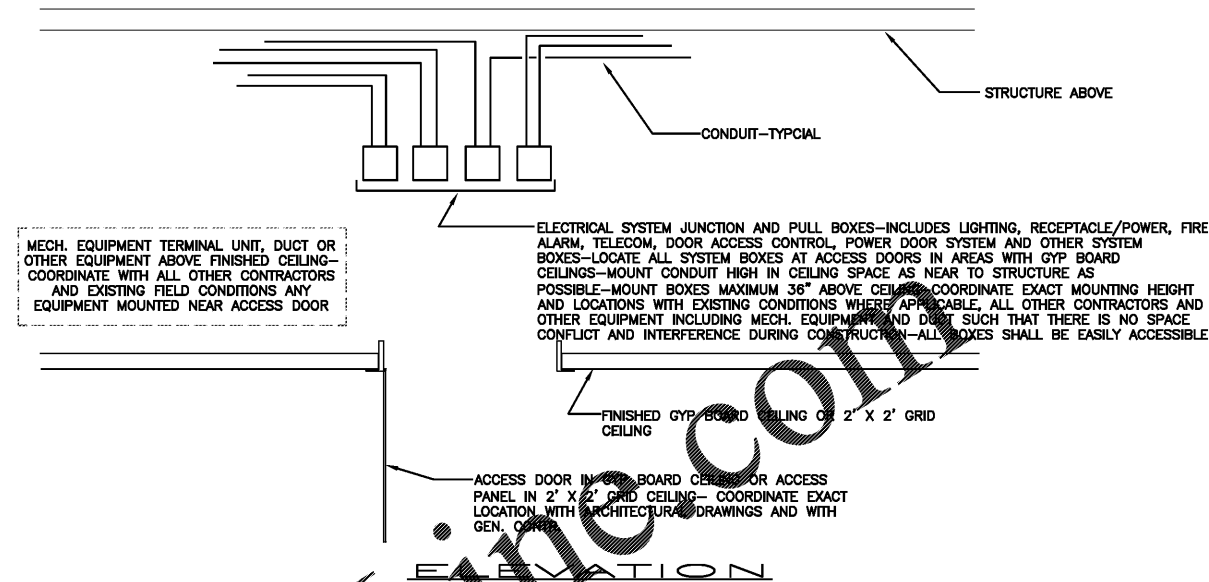


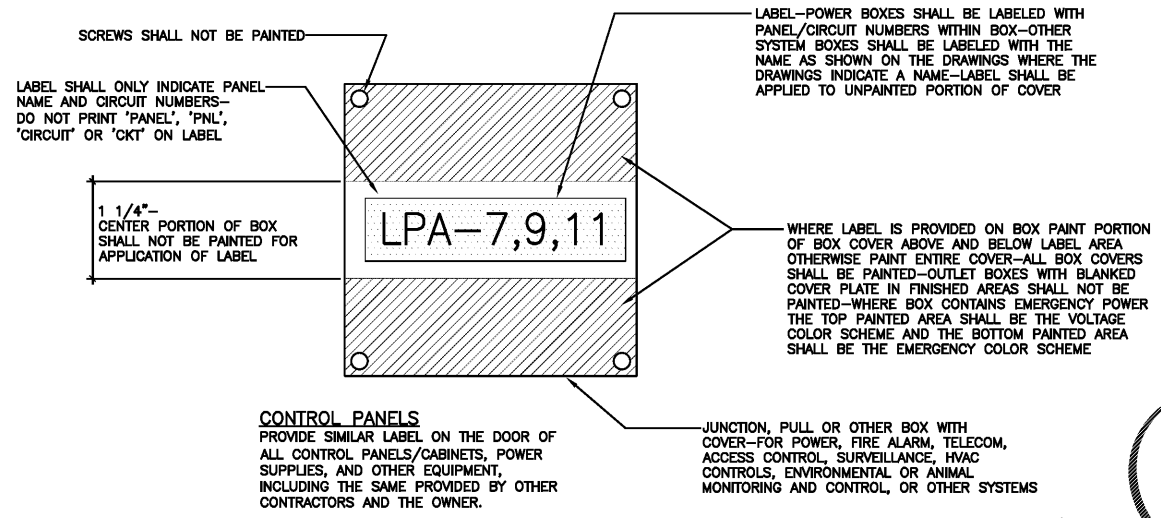
**NOTES**

1- COORDINATE CAREFULLY FOR LOCATION OF ACCESS DOORS IN GYP BOARD CEILING AND LOCATION OF ACCESS PANELS IN 2' X 2' GRID CEILING. LOCATIONS FOR JUNCTION BOXES ABOVE CEILING IS LIMITED AND JUNCTION BOXES MUST BE INSTALLED AT ACCESS DOOR IN GYP BOARD CEILING OR ACCESS PANEL IN 2' X 2' GRID CEILING. THE ELECTRICAL CONTRACTOR SHALL ASSIST IN THE FINAL LOCATION OF REQUIRED ACCESS DOORS.

2- COORDINATE CAREFULLY WITH MECHANICAL, PLUMBING, FIRE PROTECTION AND OTHER CONTRACTORS, AND EXISTING CONDITIONS PRIOR TO ANY INSTALLATION TO DETERMINE EXACT LOCATIONS AND ELEVATIONS OF BOXES IN ORDER TO MAINTAIN NECESSARY ACCESS AND CLEARANCE TO BOXES AND OTHER EQUIPMENT BEING INSTALLED.



**1** OUTLETS ABOVE GYP BOARD CEILING OR ABOVE 2' X 2' GRID CEILING  
E404 NOT TO SCALE



**NOTES**

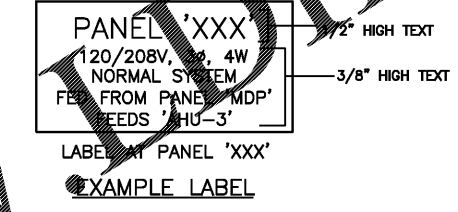
1- LABEL SHALL BE MADE ON TAPE WITH THERMAL TRANSFER AND INK RIBBON TYPE PROCESS.

2- LABELS ON JUNCTION, PULL OR OTHER BOXES, AND CONTROL PANELS SHALL BE WHITE 1" TAPE WITH 1/2" BLACK TEXT.

3- LABELS ON RECEPTABLES, SWITCHES AND OTHER DEVICE COVER PLATES SHALL BE 1/4" CLEAR TAPE WITH 1/8" BLACK TEXT.

**PAINT COLOR SCHEME**

BLUE (DARK BLUE)	120/208V EQUIPMENT
BLACK	277/480V EQUIPMENT
BRIGHT RED	FIRE ALARM EQUIPMENT
DARK RED (BURNDY)	SECURITY EQUIPMENT (INCLUDING ACCESS CONTROL, SURVEILLANCE)
GREEN	EMERGENCY POWER EQUIPMENT
ORANGE	TELEPHONE EQUIPMENT
BROWN	DATA EQUIPMENT
PURPLE	TELEVISION EQUIPMENT
CYAN	BAS/CONTROLS EQUIPMENT
YELLOW	LIGHTING CONTROL EQUIPMENT
WHITE	PAGING EQUIPMENT



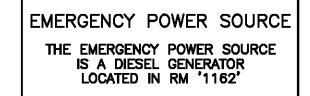
**NOTES**

1. PROVIDE PHENOLIC LABEL ON ALL PANELS, DISCONNECTS, ENCLOSED BREAKERS, MOTOR CONTROL CENTERS, AND OTHER DISTRIBUTION EQUIPMENT. FURNISH LABELS TO THE MECHANICAL CONTRACTOR SIMILAR TO THE ABOVE FOR VFD'S FOR INSTALLATION BY THE MECHANICAL CONTRACTOR.

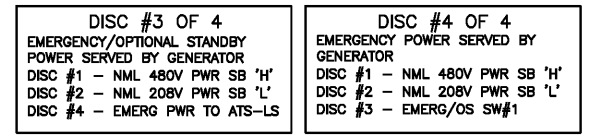
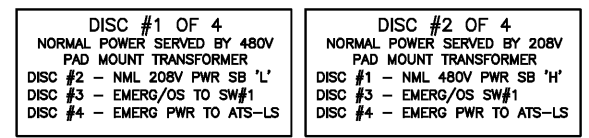
2. LABEL SHALL INDICATE PANEL/EQUIPMENT NAME, VOLTAGE/PHASE/WIRE, SYSTEM BRANCH/DESIGNATION AS DEFINED BY NEC (NORMAL, EMERGENCY, STANDBY, OPTIONAL STANDBY, LIFE SAFETY, CRITICAL, EQUIPMENT, ETC.), AND SOURCE OF FEED TO PANEL/EQUIPMENT. LABELS FOR DISCONNECTS, ENCLOSED BREAKERS AND OTHER INDIVIDUAL DEVICES SHALL INCLUDE THE NAME OF EQUIPMENT WHICH IT FEEDS.

3. LABELS SHALL BE ENGRAVED PHENOLIC LABELS WITH COLOR SCHEME PER SPECIFICATIONS, OR WHERE INSTALLED AT AN EXISTING FACILITY THE COLOR SCHEME SHALL MATCH EXISTING ELECTRICAL DISTRIBUTION COLOR SCHEME (COORDINATE WITH OWNER). LETTERING SHALL BE CLEARLY LEGIBLE AND LETTERS SHALL NOT BE CONDENSED HORIZONTALLY TO THE POINT THE LETTERS TOUCH.

4. PROVIDE SIMILAR LABEL ON MOTOR CONTROL CENTER BUCKETS INDICATING LOAD AND HORSEPOWER. LABEL ON BUCKETS SHALL BE 3/8" HIGH.



**EMERGENCY POWER SOURCE LABEL**



**SERVICE/FEEDER DISCONNECT LABELS**

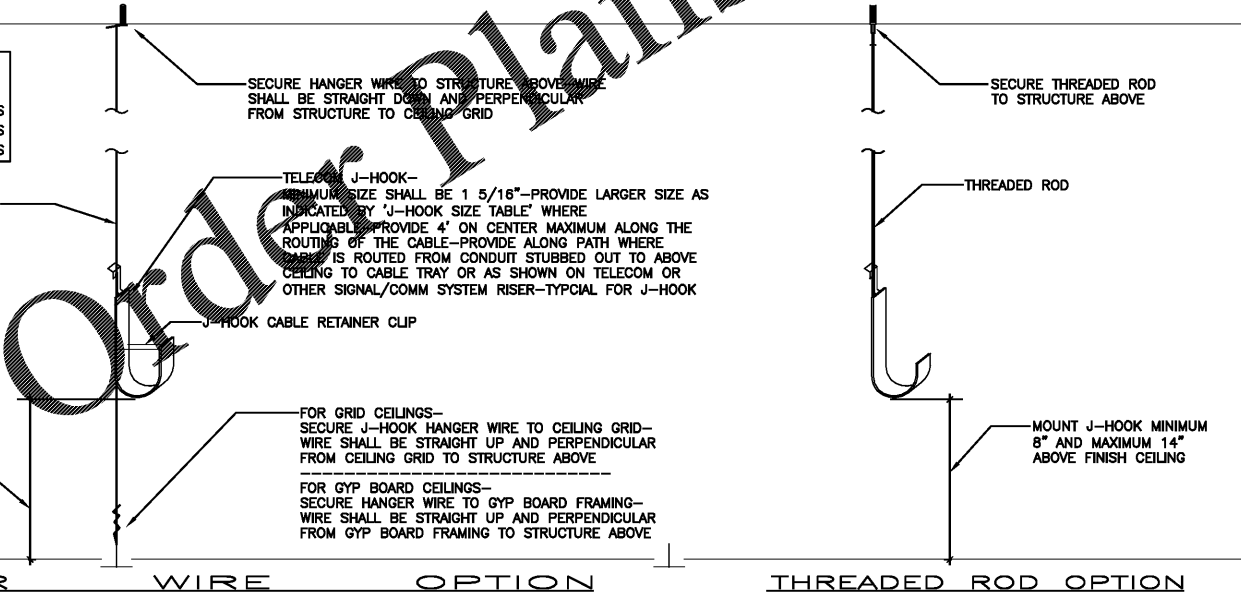
**2** JUNCTION AND PULL BOX PAINTING AND LABELING, AND CONTROL PANEL LABELING  
E404 SCALE: NOT TO SCALE

**3** PANEL AND EQUIPMENT LABELING  
E404 SCALE: NOT TO SCALE

**'J'-HOOK SIZE TABLE**

SIZE	CABLE QUANTITY
1 5/16"	MAXIMUM 12 CABLES
2"	MAXIMUM 16 CABLES
4"	MAXIMUM 75 CABLES

**NOTE: WALL MOUNT J-HOOKS**  
J-HOOKS MAY BE WALL MOUNTED WHERE J-HOOK WILL NOT INTERFERE WITH ANY OTHER PIPING, DUCT OR OTHER EQUIPMENT ABOVE THE CEILING. J-HOOKS WALL MOUNTED MAY BE MOUNTED MINIMUM 4" ABOVE CEILING AND MAXIMUM 16" ABOVE CEILING. WALL MOUNTED J-HOOKS SHALL HAVE MINIMUM 12" CLEARANCE IN FRONT.



**NOTES**

1- EXPOSED CABLE IS ANY CABLE WHICH IS NOT INSTALLED IN RACEWAY.

2- THIS DETAIL APPLIES TO TELECOM, ACCESS CONTROL, SURVEILLANCE, LIGHTING CONTROLS (UNLESS DETAILED OTHERWISE), HVAC, ENVIRONMENTAL/ANIMAL MONITORING AND CONTROL, REVERSE OSMOSIS (RO) WATER CONTROL AND ALL OTHER LOW VOLTAGE, SIGNAL OR CONTROLS CABLE.

3- IT IS THE RESPONSIBILITY OF THE ELECTRICAL CONTRACTOR TO FURNISH AND INSTALL ALL EXPOSED CABLE SUPPORTS (HANGER WIRE, J-HOOKS, ETC.) FOR ALL EXPOSED CABLE. COORDINATE WITH OTHER TRADES, CONTRACTORS AND WITH THE SUPPLIER OF ANY EQUIPMENT FURNISHED AND INSTALLED BY THE OWNER, DETERMINE CABLE QUANTITIES AND ROUTING PATHS, AND PROVIDE PROVISIONS (J-HOOKS, HANGER WIRE, ETC.) FOR THE INSTALLATION OF ALL EXPOSED CABLE.

4- WHEN J-HOOKS ARE INSTALLED ON WIRE HANGERS THE J-HOOKS AND EXPOSED CABLE SHALL BE INSTALLED AFTER GYP BOARD CEILING FRAMING AND AFTER GRID CEILING GRID INSTALLATION, BUT PRIOR TO INSTALLATION OF ANY GYP BOARD OR ANY GRID CEILING ACOUSTICAL OR FRP CEILING TILES/PANELS.

5- WHEN J-HOOKS ARE INSTALLED ON THREADED RODS THE J-HOOKS AND EXPOSED CABLE SHALL BE INSTALLED PRIOR TO ANY PORTION OF THE GYP BOARD CEILING (FRAMING, GYP BOARD, ETC.) AND PRIOR TO ANY PORTION OF THE GRID CEILING SYSTEM (GRID, TILES, PANELS, ETC.).

5- EXPOSED CABLES SHALL BE INSTALLED STRICTLY PER THE NEC. EXPOSED CABLE SHALL NOT BE SUPPORTED FROM RACEWAY (UNLESS SPECIFICALLY NOTED OTHERWISE IN THE ELECTRICAL CONSTRUCTION DOCUMENTS), AND SHALL NOT BE SUPPORTED FROM PIPING, DUCT, OTHER EQUIPMENT OR SUPPORTS FOR OTHER EQUIPMENT (CHANNEL, STRAPS, HANGERS, ETC.). EXPOSED CABLE AND CABLE SUPPORTS SHALL BE MOUNTED INDEPENDENT FROM ALL OTHER PIPING, DUCT, EQUIPMENT AND INDEPENDENT FROM ALL SUPPORT SYSTEM OF THE SAME.

6- J-HOOKS SHALL HAVE POWDER COATED PAINT FINISH. COLOR SHALL BE ORANGE OR YELLOW. J-HOOK SHALL BE CADDY SERIES 'CATXHP' OR B-LINE SERIES 'BOH' OR APPROVED EQUAL. J-HOOK SHALL INCLUDE CABLE RETAINER CLIP AND REQUIRED FASTENERS/APURTENANCES FOR MOUNTING ON HANGER WIRE OR THREADED ROD.

**4** EXPOSED CABLE (NOT IN RACEWAY) AND J-HOOK INSTALLATION  
E404 SCALE: NOT TO SCALE



REVISION: 10/18/19 PER SCO COMMENTS

SHEET TITLE: DETAILS  
SCALE: NOT TO SCALE

UNC SCHOOL OF MEDICINE  
NEUROSCIENCES RESEARCH BUILDING  
7th & 8th FLOORS FOR DERMATOLOGY  
15 William Favin Road, Campus Box 7250  
Chapel Hill, North Carolina 27599-7250

ISSUE DATE: 9/25/2019  
JOB NO: 10761-00  
DWG NO:

**E404**

BID SET