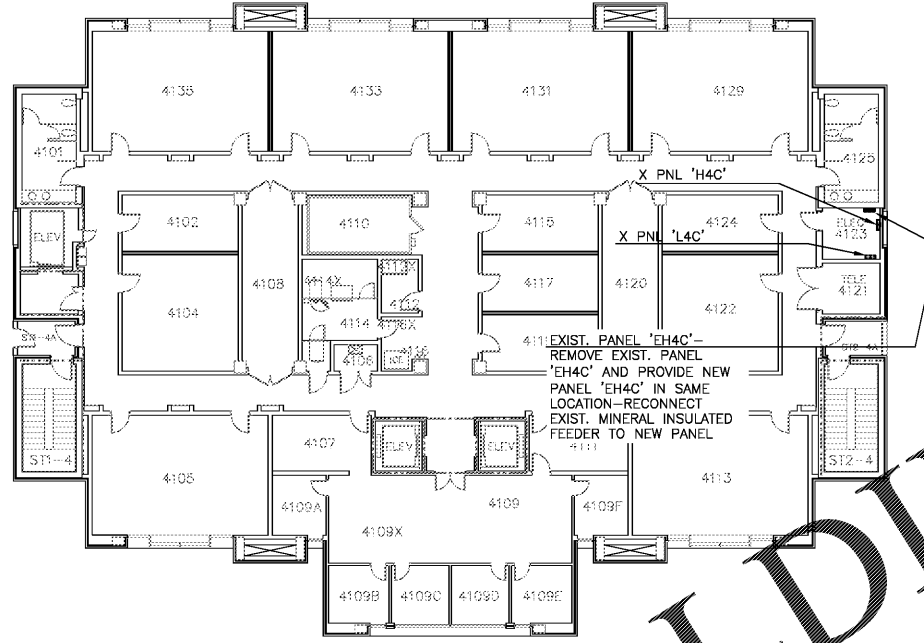
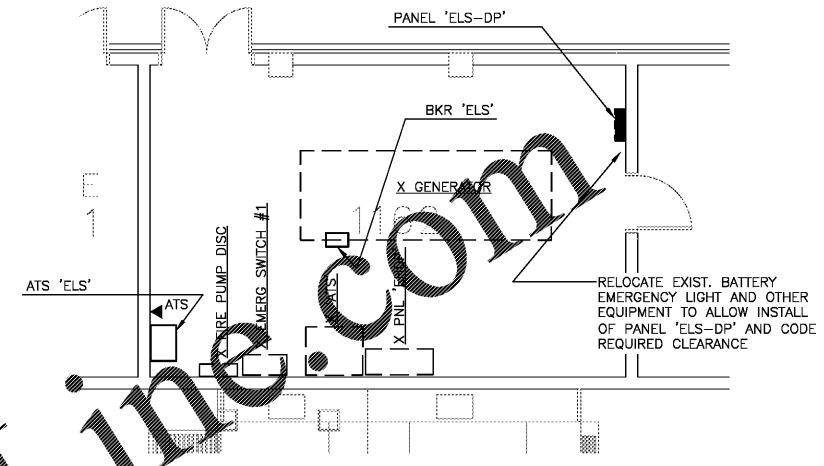


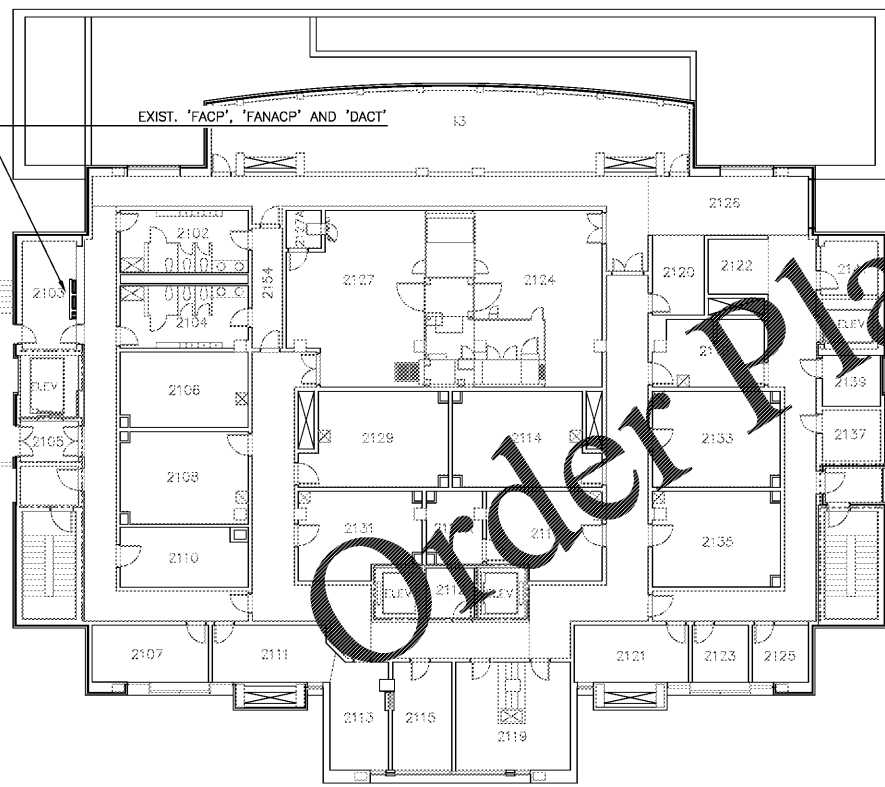
1 FIRST FLOOR PLAN – ELECTRICAL SYSTEMS  
E101 SCALE: 1/16"=1'-0"



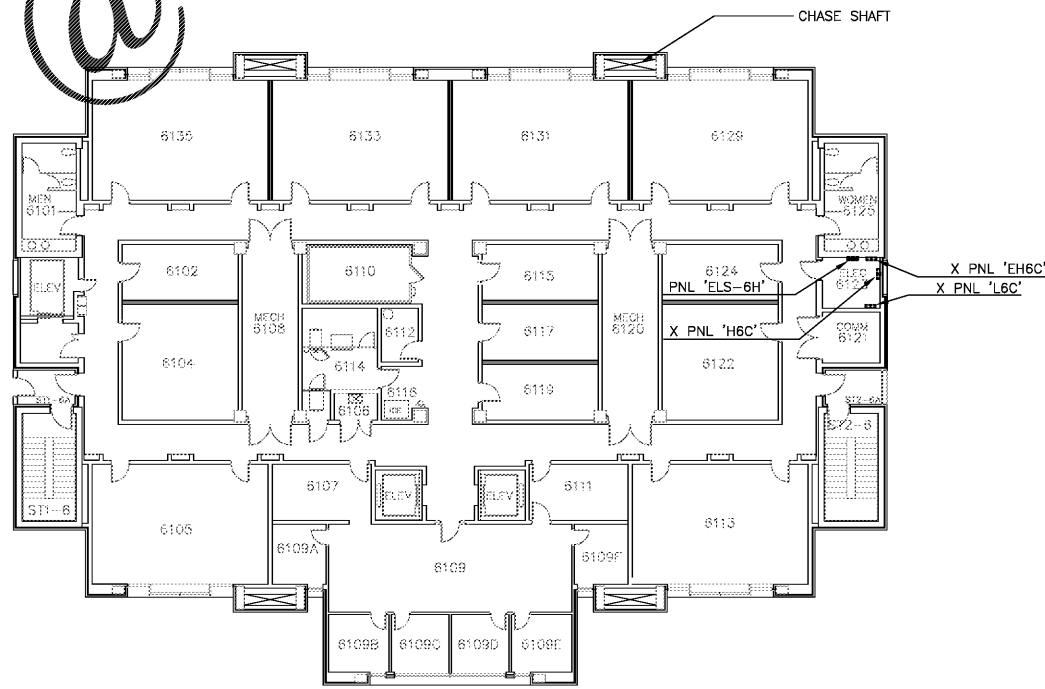
3 FOURTH FLOOR PLAN – ELECTRICAL SYSTEMS  
E101 SCALE: 1/16"=1'-0"



5 ENLARGED FLOOR PLAN – RM 1162  
E101 SCALE: 3/16"=1'-0"



2 SECOND FLOOR PLAN – ELECTRICAL SYSTEMS  
E101 SCALE: 1/16"=1'-0"

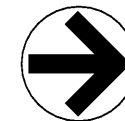


4 SIXTH FLOOR PLAN – ELECTRICAL SYSTEMS  
E101 SCALE: 1/16"=1'-0"

**DRAWING NOTES**

- 1- TO THE GREATEST EXTENT POSSIBLE AVOID ROUTING CONDUIT THRU RATED WALLS.

PARTITION AND WALL LEGEND	
	1-HOUR FIRE BARRIER
	2-HOUR FIRE BARRIER
	3-HOUR FIRE BARRIER



**LORD AECK SARGENT**  
A KATERRA COMPANY  
© 2019 Lord Aeck Sargent  
This drawing is to be used only for the project and location specified. Any reuse or modification of this drawing without the written permission of Lord Aeck Sargent is strictly prohibited.

Kramer Engineering Services  
5517 Cascade Dr.  
Chapel Hill, NC 27514  
TEL (919) 933-3350  
email: donna@krsell.com  
Firm License: P-1089



REVISION

SHEET TITLE  
SECOND AND FOURTH FLOOR PLANS - ELECTRICAL SYSTEMS  
SCALE (IN 1/16")  
0 16 FT 32 FT  
1/16" = 1'-0"

UNC SCHOOL OF MEDICINE  
NEUROSCIENCES RESEARCH BUILDING  
7th & 8th FLOORS FOR DERMATOLOGY  
LOCATION  
115 Mason Farm Road, Campus Box 7250  
Chapel Hill, North Carolina 27599-7250

ISSUE DATE: 9/25/2019  
JOB NO: 10761-00  
DWG NO: E101

BID SET