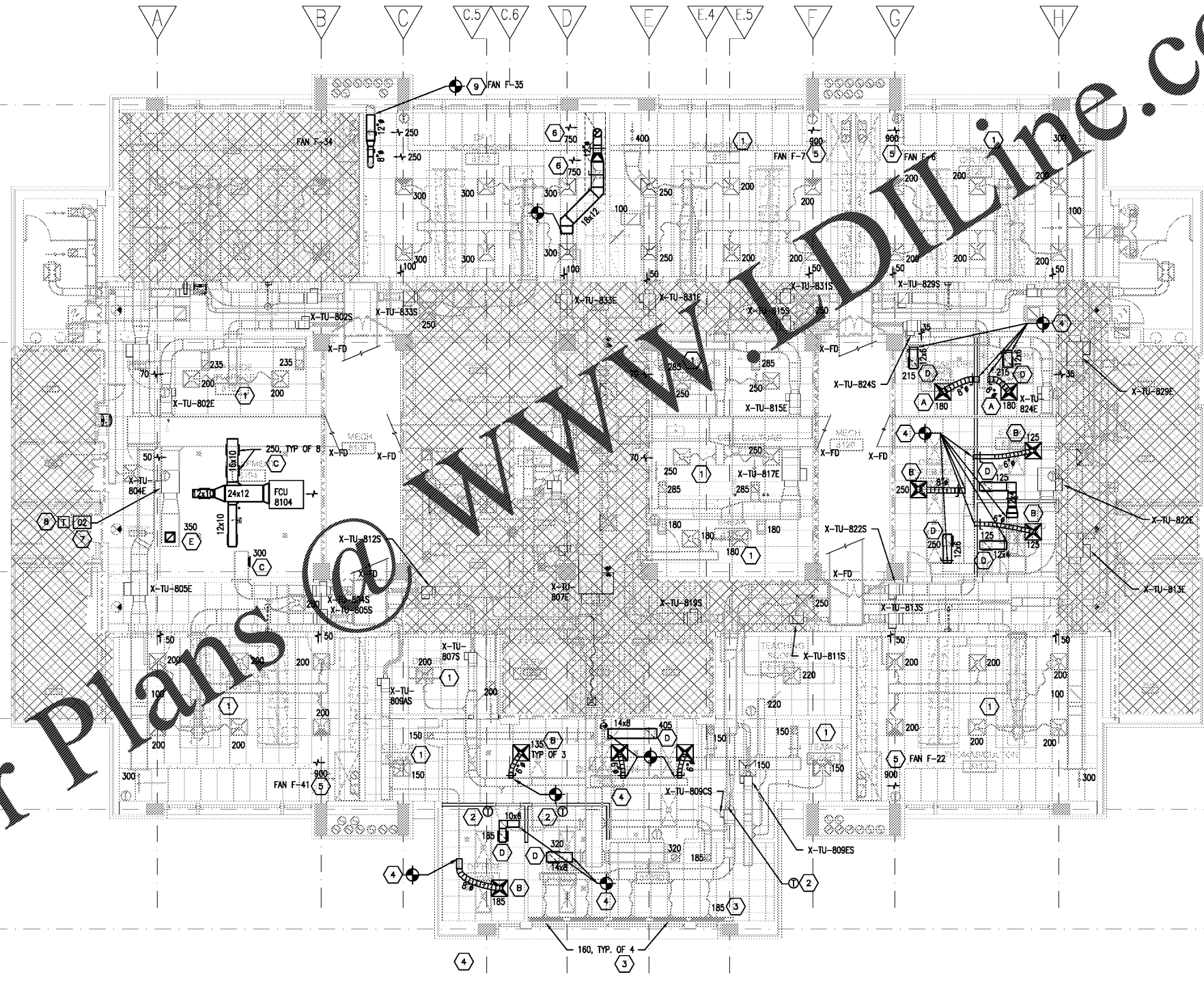


Order Plans @

WWW.DLINE.COM



- GENERAL NOTES**
- BALANCE AIR FLOWS TO ALL AREAS WHERE DESIGN CFM'S ARE INDICATED, WHETHER TERMINAL BOXES, DIFFUSERS, OR GRILLES ARE REPLACED OR NOT.
 - RE-CALIBRATE SENSORS AND CONTROLS ASSOCIATED WITH ALL TERMINAL REHEAT UNITS WHERE AIR FLOW BALANCE IS INDICATED. REPORT DEFECTIVE CONTROLLERS OR SENSORS TO ENGINEER. EXISTING DDC CONTROLLERS AND SENSORS ARE BY JOHNSON CONTROLS.
 - GRAPHICS SHALL BE UPDATED TO REFLECT ANY CHANGES TO ROOM ID OR CONFIGURATION.
 - REFER TO ARCHITECT'S REFLECTED CEILING PLAN FOR EXACT LOCATION OF DIFFUSERS AND GRILLES.
 - WHERE NEW DIFFUSER TAKE-OFFS ARE ADDED TO EXISTING BRANCH DUCTS, BALANCING DAMPERS SHALL BE INSTALLED AT TAKE-OFF LOCATION. WHERE EXISTING DIFFUSER TAKE-OFFS ARE RE-USED, EXISTING BALANCING DAMPERS MAY BE RE-USED.
 - WHERE PORTIONS OF THE EXISTING DISTRIBUTION ARE REMOVED, PATCH, SEAL AND INSULATE DUCT TO MATCH EXISTING.
 - FLEXIBLE DUCTWORK IS NOT PERMITTED ON THE EXHAUST SYSTEM. WHERE NEW GRILLES ARE INSTALLED IN LAY-IN CEILINGS, COORDINATE WITH GENERAL CONTRACTOR TO TRIM CEILING TILES AS NEEDED TO PROVIDE A NEAT AND FINISHED APPEARANCE AROUND GRILLES.
 - WHERE EXISTING DIFFUSERS OR GRILLES ARE REINSTALLED IN NEW CEILINGS, CLEAN DIFFUSER OR GRILLE. FLEXIBLE DUCT CONNECTORS SHALL BE REPLACED.
 - ALL DUCT MOUNTED TEMPERATURE AND/OR HUMIDITY SENSORS, BALANCING DAMPERS, AIR VALVES, TERMINAL UNITS, REHEAT COILS, VALVES, HUMIDIFIERS, ETC SHALL BE ACCESSIBLE AND SERVICEABLE THROUGH LAY-IN CEILING TILE OR ACCESS DOOR.

- SHEET KEYED NOTES**
- WORK IN THIS ROOM IS LIMITED TO REBALANCE OF SUPPLY AND EXHAUST.
 - MOVE THERMOSTAT TO LOCATION INDICATED.
 - REMOVE AND REINSTALL LINEAR SLOT DIFFUSER IN NEW CEILING.
 - INSTALL BALANCING DAMPER ON ANY NEW TAKE-OFF IN THIS ROOM. EXISTING TAKE-OFFS AND BALANCING DAMPERS MAY BE RE-USED WHERE SIZE AND LOCATION ARE SUITABLE.
 - EXISTING FUME HOOD TO REMAIN. EACH FUME HOOD IS PROVIDED WITH A DEDICATED EXHAUST FAN LOCATED ON THE ROOF. MEASURE AND RECORD FUME HOOD EXHAUST WHICH IS EXPECTED TO BE 100 FPM AT 18" SASH HEIGHT. NOTIFY ENGINEER IF EXHAUST DEVIATES MORE THAN 10% FROM EXPECTED FACE VELOCITY.

INSTALL AN ENGRAVED PLACARD ON FUME HOOD STATING "FUME HOOD SERVED BY FAN F-XX". INSTALL AN ENGRAVED PLACARD ON THE FAN HOUSING STATING: "FAN F-XX SERVES FUME HOOD, LAB YYYY"
 - CANOPY HOODS PROVIDED BY OTHERS. CONNECT EXHAUST TO 12" DUCT CONNECTOR. REFER TO SHEET LC108A.
 - OXYGEN DEPLETION MONITOR SHALL BE LOCATED IN ROOM WITH BULK NITROGEN EQUIPMENT. MONITOR SHALL PROVIDE A LOCAL AUDIO-VISUAL ALARM AND ALSO ALARM CAMPUS PUBLIC SAFETY OFFICE AND GAS IF OXYGEN LEVELS DROP BELOW 18%. MOUNT ADJACENT TO AND AT SAME ELEVATION AS THERMOSTAT.
 - FCU THERMOSTAT SETPOINT SHALL BE 2°F HIGHER THAN TERMINAL BOX SETPOINT.
 - EXISTING EXHAUST RISER AND DEDICATED FAN F-35 SHALL BE RE-PURPOSED FOR GROSSING STATION EXHAUST. REPLACE BELT AND GREASE BEARINGS. TRANSITION FROM 8" TAKE-OFF TO 46"x3" CONNECTOR. BALANCE AS INDICATED.

INSTALL AN ENGRAVED PLACARD ON GROSSING STATIONS STATING "STATIONS SERVED BY FAN F-35". INSTALL AN ENGRAVED PLACARD ON THE FAN HOUSING STATING: "FAN F-35 SERVES GROSSING STATIONS, LAB 8135"

PARTITION AND WALL LEGEND

	1-HOUR FIRE BARRIER
	2-HOUR FIRE BARRIER

1 EIGHTH FLOOR PLAN - EQUIPMENT AND DUCTWORK
M108 1/8" = 1'-0"



LORD AECK SARGENT
A KATERRA COMPANY

Kramer Engineering Services, plc
5517 Cascade Dr.
Chapel Hill, NC 27514
TEL: (919) 933-3350
email: Donna@AESplc.com
Firm License: P-1099

UNC SCHOOL OF MEDICINE
NEUROSCIENCES RESEARCH BUILDING
7th & 8th FLOORS FOR DERMATOLOGY

ISSUE DATE: 09/25/2019
JOB NO.: 10761-00
DWG. NO.: M108

1/8" = 1'-0"
0 4 8 16 FT

BID SET