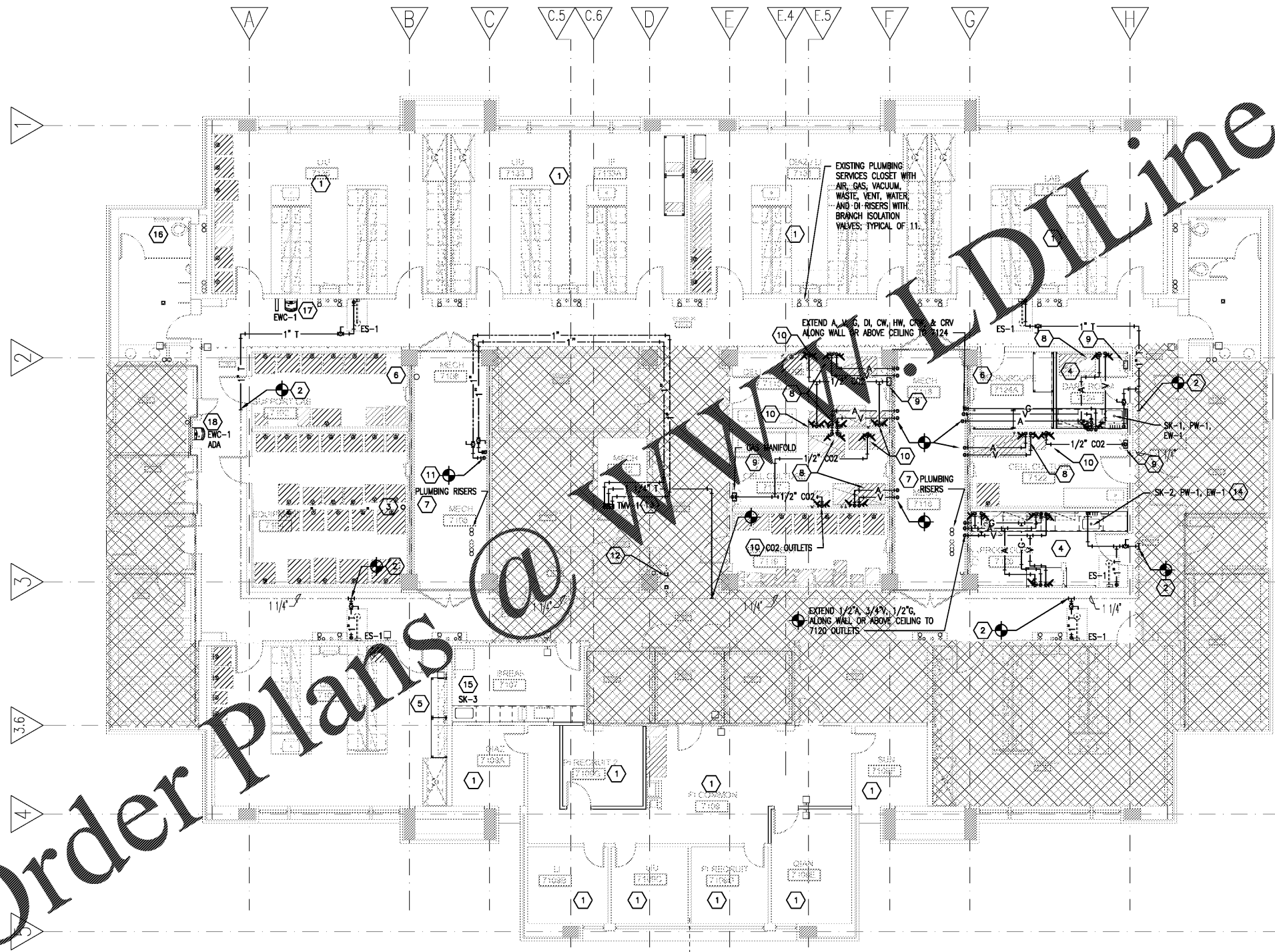


Order Plans @

WWW.DILINE.COM



GENERAL NOTES

- WHERE PIPING IS REMOVED BACK TO UTILITY CHASE COORDINATE WITH GENERAL CONTRACTOR TO PATCH WALL TO MAINTAIN 2-HR FIRE RATING.
- WHERE PIPING IS REMOVED BACK TO A POINT WHERE IT IS CONCEALED BEHIND FINISHED WALLS, PATCH WALL TO MATCH EXISTING OR COVER WITH A CLEANOUT COVER.
- IN THE REMOVAL OF PORTIONS OF THE DRAINAGE SYSTEM, DEAD ENDS GREATER THAN TWO FEET IN LENGTH ARE PROHIBITED. WHERE FIXTURES ARE REMOVED AND IT IS NOT FEASIBLE TO REMOVE THE DRAIN PIPING AT THE BRANCH DRAIN, AN ACCESSIBLE CLEANOUT SHALL BE INSTALLED.
- COORDINATE WITH GENERAL CONTRACTOR WHERE IT IS NECESSARY TO REMOVE AND REPLACE CEILING AND/OR DE-MOUNTABLE WALL PARTITIONS IN ORDER TO COMPLETE THE DEMOLITION AND NEW WORK.
- REFER TO ENLARGED LAB PLANS LC107A AND LC107B FOR LAB EQUIPMENT PLANS AND DIMENSIONED LOCATIONS FOR EMERGENCY SHOWERS AND LAB GAS OUTLETS. REFER TO SHEET LC001 FOR LAB FIXTURES AND OUTLETS PROVIDED UNDER DIVISION 12. ROUGH-IN AND FINAL CONNECTIONS SHALL BE BY DIVISION 22 CONTRACTOR.

REFER KEYED NOTES

- NO NEW PLUMBING WORK, THIS ROOM.
- EXTEND TEMPERED WATER PIPING TO NEW EMERGENCY SHOWER.
- PATCH WALL WHERE PIPING WAS REMOVED TO MAINTAIN FIRE RATING OF SHAFT WALL. INSTALL HUB DRAIN WITH TRAP PRIMER TIGHT AGAINST CHASE WALL FOR INDIRECT WASTE FROM EVAPORATOR COIL. REFER TO DETAIL 3/P001 AND SHEET M118.
- EXTEND AIR, GAS, VACUUM, CW, HW, DI WATER, LAB WASTE, AND LAB VENT TO NEW SINK, FUME HOOD, AND/OR LAB GAS OUTLETS. REFER TO LAB CASEWORK PLANS LC107A AND LC107B FOR LOCATIONS OF NEW FIXTURES AND OUTLETS. SUPPORT PIPING ABOVE FLOOR ALONG WALL AND/OR ABOVE CEILING.
- RE-SUPPORT LAB WASTE, WATER, VENT AND GAS PIPING TO EXISTING FUME HOOD WHERE DEMOLISHED CASEWORK HAS BEEN REMOVED.
- PATCH WALL WHERE PIPING WAS REMOVED TO MAINTAIN FIRE RATING OF SHAFT WALL.
- EXISTING UTILITY CHASE PLUMBING RISERS FOR AIR, GAS, VACUUM, WASTE, VENT, AND DISTILLED WATER WITH HORIZONTAL DISTRIBUTION AND BRANCH ISOLATION VALVES SERVING INDIVIDUAL LABS.
- EXTEND 1/2" COMPRESSED AIR AND 3/4" VACUUM FROM UTILITY CORRIDOR TO VICINITY OF BIOSAFETY CABINET. INSTALL OUTLETS AT 24" AFF. ROUTE ABOVE CEILING OR TIGHT TO WALL.
- DROP 1/2" CO2 AGAINST WALL AND CONNECT TO TWO-CYLINDER SWITCHING MANIFOLD. PROVIDE ISOLATION VALVE AT CONNECTION TO MANIFOLD. MOUNT 5'6" AFF. REFER TO DETAIL 1/P001.
- PROVIDE AND INSTALL DUPLEX TURRET CO2 BALL VALVE OUTLET AT 24" AFF FOR CO2 INCUBATORS.
- INTERCEPT 1" HW AND CW INSIDE UTILITY CHASE AND EXTEND TO NEW MIXING VALVE.
- DISCONNECT AND CAP EXISTING COLD WATER SUPPLY TO EMERGENCY SHOWERS. SUPPLY SHALL BE TEMPERED WATER EXTENDED FROM NEW MIXING VALVE.
- INSTALL MIXING VALVE BELOW CEILING AT 5'0" AFF.
- INTERCEPT WATER, WASTE, AND DI WATER FROM SINK SERVICES IN ADJACENT ROOM 7122.
- INTERCEPT EXISTING WATER AND WASTE PIPING FROM LOCATION OF DEMOLISHED BREAK ROOM SINK. PROVIDE ADAPTER TO EXISTING GLASS WASTE PIPE.
- RETROFIT EXISTING MANUAL FLUSH VALVE WITH BATTERY-POWERED, INFRARED-SENSOR OPERATED FLUSH UNIT. RETROFIT UNIT SHALL BE CHROME PLATED METAL WITH LOW BATTERY INDICATOR AND OVERRIDE PUSHBUTTON. UNIT SHALL BE ZURN ZERK-CPM OR EQUIVALENT BY SLOAN, CAMBRIDGE BRASS, OR DELANY.
- MOUNT WATER COOLER AT STANDARD HEIGHT SO THAT BUBBLER ORIFICE IS BETWEEN 38" AND 40" AFF. WASTE AND WATER PIPING SHALL INTERCEPT EXISTING LAB SINK WATER AND WASTE LOCATED IN THE LAB BENCH CHASE. WASTE PIPING SHALL BE CHEMICAL RESISTANT MATERIAL.
- REMOVE AND REPLACE EXISTING WATER COOLER. NEW WATER COOLER SHALL BE MOUNTED AT ADA ACCESSIBLE HEIGHT SO THAT BUBBLER ORIFICE IS AT A MAXIMUM ELEVATION OF 36" AFF. AND KNEE SPACE CLEARANCE IS A MINIMUM OF 27" AFF. RE-WORK WASTE AND WATER PIPING SO THAT PIPING IS CONCEALED BEHIND THE REMOVABLE SKIRT. COORDINATE WITH GENERAL CONTRACTOR FOR PATCHING AND REPAIR OF WALL.

PARTITION AND WALL LEGEND

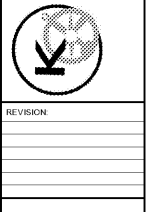
- 1-HOUR FIRE BARRIER
- 2-HOUR FIRE BARRIER

1 SEVENTH FLOOR PLAN - PLUMBING WORK
P107 1/8" = 1'-0"



LORD AECK SARGENT
A KATERBA COMPANY
© 2018 Lord Aeck Sargent, Inc. All rights reserved. This document is the property of Lord Aeck Sargent, Inc. and is to be returned upon demand. The information herein is confidential and may not be used or divulged without the written permission of Lord Aeck Sargent.

Kramer Engineering Services, Inc.
5517 Cascade Dr.
Chapel Hill, NC 27514
TEL: (919) 933-3350
email: Donna@AESpllc.com
Firm License: P-1099



REVISION

NO.	DESCRIPTION

SEVENTH FLOOR PLAN - PLUMBING PLAN
SCALE: 1/8" = 1'-0"
1/8" = 1'-0"

UNC SCHOOL OF MEDICINE
NEUROSCIENCES RESEARCH BUILDING
7th & 8th FLOORS FOR DERMATOLOGY
LOCATION:
115 Mason Farm Road, Campus Box 7250
Chapel Hill, North Carolina 27598-7250

ISSUE DATE:
09/25/2019
JOB NO:
10761-00
DWG. NO.:

P107

BID SET