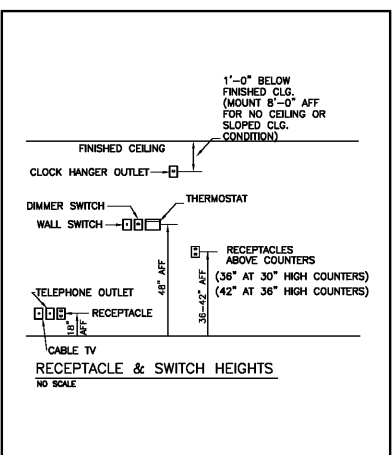
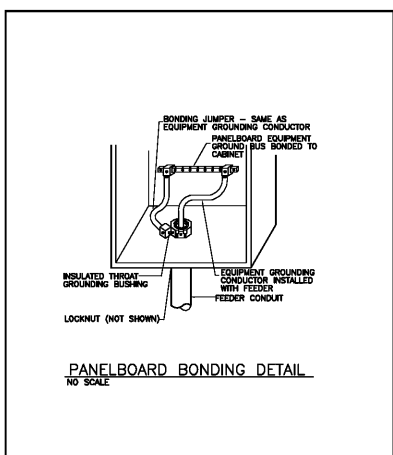
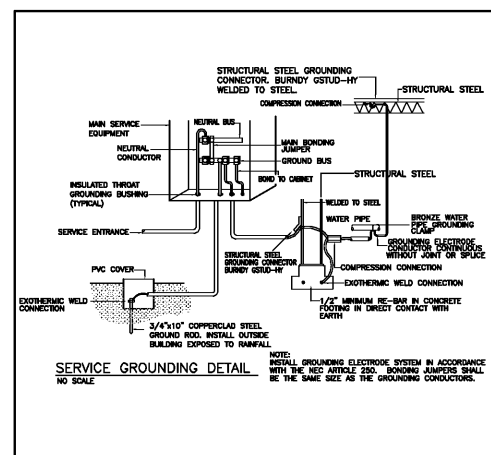
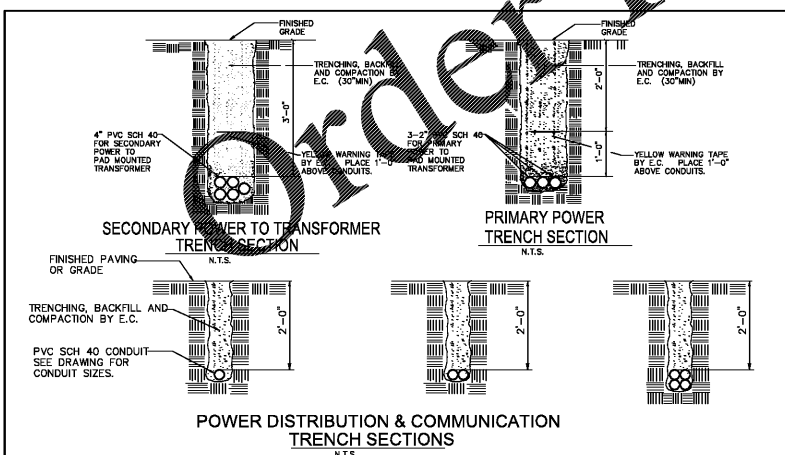


### ELECTRICAL LEGEND

	120V. DUPLEX RECEPTACLE
	120V. DUPLEX RECEPTACLE GROUND FAULT INTERRUPTER
	120V. WEATHER PROOF GROUND FAULT INTERRUPTER
	220V. RECEPTACLE
	TOGGLE SWITCH
	THREE WAY TOGGLE SWITCH
	DIRECT HOOK-UP FOR EQUIPMENT VERIFY EQUIPMENT AND ELECTRICAL CONNECTION REQUIRED
	AC DISCONNECT
	ELECTRICAL PANEL SEE RISER DIAGRAM FOR SIZE AND TYPE
	ELECTRICAL METER
	CABLE TV OUTLET
	TELEPHONE AND DATA OUTLETS
	SWITCHED TOGETHER
	SHARED CIRCUIT
	LITHONIA 2GTB 3 32 A12 MVOLT 1/3 GEB10IS 2'X4' LAY-IN FLUORESCENT FIXTURE
	LITHONIA LB 2 32 A12 MVOLT GEB10IS 16' X 4' SURFACE MOUNT FLUORESCENT FIXTURE
	LITHONIA TWA 100M 120 W/ PHOTOCELL EXTERIOR SURFACE MOUNT METAL HALIDE FIXTURE W/ PHOTOCELL
	LITHONIA TWA 100M 120 W/ PHOTOCELL EXTERIOR SURFACE MOUNT METAL HALIDE FIXTURE W/ PHOTOCELL
	OWNER SELECTED BASE LIGHT FIXTURE
	OWNER SELECTED LANTERN TYPE LIGHT FIXTURE
	OWNER SELECTED EXTERIOR LED DOWNLIGHT
	LITHONIA LQM S W 3 R 120 EL N EMERGENCY EXIT LIGHT WITH BATTERY BACK-UP
	LITHONIA ELM2 120V DUAL HEAD EMERGENCY EGRESS LIGHT WITH BATTERY BACK-UP
	LITHONIA ELM27-RO (REMOTE BATTERY INSIDE) EIA-W-NH1206 (REMOTE HEAD OUTSIDE) SINGLE REMOTE HEAD EMERGENCY EGRESS LIGHT WITH BATTERY BACK-UP
	EXHAUST FAN - SUPPLIED BY MECHANICAL CONTRACTOR
	HOME RUN TO PANEL
	ARROW INDICATES DIRECTION - TAG INDICATES THE CIRCUIT



### ELECTRICAL PLAN

SCALE: 3/16" = 1'-0"



**Taylor Wallace Designs**  
 An Architectural & Engineering Corporation  
 Karl M. Wallace II, Civil Engineer  
 Gregory T. Wallace II, Architect  
 441 Pointe Place Road, Downsville, LA 71234 | 318.396.2197

The Professional seal and the details on it are the sole property of the Architect and may be used for this specific project only. It shall not be loaned, copied or reproduced in whole or in part or for any other purpose without the written consent of the Architect.  
 © COPYRIGHT 2017, TAYLOR-WALLACE DESIGNS, INC.  
 09/12/17

PROJECT: A NEW STRIP SHOPPING CENTER FOR  
**RAY ANDING**  
 NORTH 7TH  
 WEST MONROE, LOUISIANA

PROJECT NO.: B\_070517

REVISIONS		
No.	Description	Date

DRAWN BY:	TDL
CHECKED BY:	KMW
DATE:	09/12/17
SCALE:	AS NOTED
SHEET:	

# E-1.0