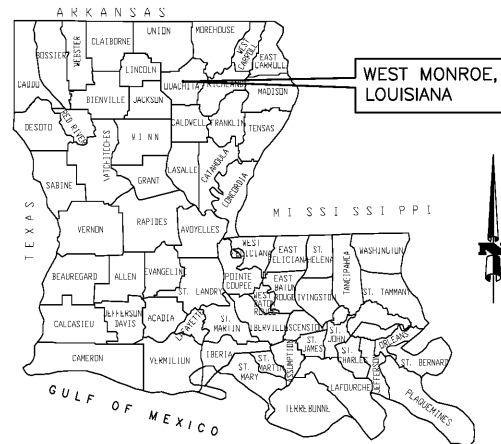


CODES & DESIGN REFERENCES

THE FOLLOWING CODES ARE AN OUTLINE OF MINIMUM CODE & DESIGN REQUIREMENTS & THEIR APPLICATION...

- 1. Building Code: "International Building Code", by the International Code Council, 2012 edition.
2. Structural Steel: "Allowable Stress Design Manual of Steel Construction", ASTM 992.
3. Structural Concrete: "Building Code Requirements for Reinforced Concrete ACI 318-03", The American Concrete Institute, Latest Edition.
4. Welding: "American Welding Society" structural welding codes. (Latest Edition)
5. Electrical: "National Electrical Code" by the National Fire Protection Association, 2011 edition.
6. Plumbing: "International Plumbing Code" 2012 edition.

VICINITY MAP



SYMBOLS

Table mapping symbols to project elements: ELEVATION NUMBER, SHEET NUMBER, SECTION NUMBER, DETAIL NUMBER, ROOM NAME, ROOM NUMBER, DOOR NUMBER, WINDOW TYPE, REVISIONS, NOTE.

GENERAL NOTES

- 1. THE CONTRACTOR SHALL INCLUDE ALL COST NECESSARY TO COMPLY WITH ACT 12 & ACT 335 OF THE LA STATE LEGISLATURE...
2. BEFORE EXCAVATION, THE CONTRACTOR SHALL EXAMINE DRAWINGS, MAPS AND GROUND OF EXISTING FACILITY TO DETERMINE THE ROUTES OF ELECTRIC, GAS, WATER AND TELEPHONE SERVICES...
3. ALL CONTRACTORS AND SUBCONTRACTORS TO REVIEW ENTIRE SET OF DRAWINGS BEFORE SUBMITTING BIDS OR BEGINNING CONSTRUCTION.

DRAWING INDEX

Table listing drawing sheets: T-1.0 TITLE SHEET, C-1.0 SITE SURVEY, C-1.1 DIMENSIONED SITE PLAN, C-2.0 SITE DEVELOPMENT, C-2.1 SITE DEVELOPMENT DETAILS, C-3.0 SITE GRADING, C-3.1 SITE DETAILS, C-4.0 ON SITE DETENTION, C-5.0 STORM WATER POLLUTION PREVENTION PLAN, C-5.1 STORM WATER POLLUTION PREVENTION PLAN BMP DETAILS, S-1.0 FOUNDATION PLAN, A-1.0 FLOOR PLAN, A-2.0 SCHEDULES & DETAILS, A-3.0 EXTERIOR ELEVATIONS, A-4.0 BUILDING SECTIONS & DETAILS, A-4.1 BUILDING SECTIONS & DETAILS, MP-1.0 MECHANICAL AND PLUMBING PLAN, MP-2.0 MECHANICAL/PLUMBING NOTES & SCHEDULES, E-1.0 ELECTRICAL PLAN, E-2.0 ELECTRICAL NOTES AND DETAILS.

ABBREVIATIONS

Table of abbreviations with columns for symbol, number, ID, and description. Includes terms like AREA, AIR CONDITIONING, ACUSTIC, BOARD BUILDING, BLOCK, etc.

CODE INFORMATION

INTERNATIONAL BUILDING CODE INFORMATION. CURRENT CODE EDITION: 2012 INTERNATIONAL BUILDING CODE (IBC). Occupancy classification, fire protection systems, structural design criteria, seismic design criteria, life safety information.

LIFE SAFETY INFORMATION. CURRENT CODE EDITION: 2015 LIFE SAFETY CODE NFPA 101. Occupancy classifications, means of egress information, fire protection systems.

GENERAL CONSTRUCTION NOTES

- 1. INTERIOR PLAN DIMENSIONS ARE TO FACE OF STUD, EDGE OF SLAB OR CENTER OF DOORS AND WINDOWS.
2. INTERIOR WALL PARTITIONS TO BE CONSTRUCTED OF WOOD STUDS AT 16" O.C. UNLESS NOTED OTHERWISE.
3. GENERAL CONTRACTOR TO PROVIDE BLOCKING IN WALLS AS NECESSARY FOR WALL MOUNTED EQUIPMENT, GRAB BARS, TV'S, ETC.

LOUISIANA STATE UNIFORM CONSTRUCTION CODES

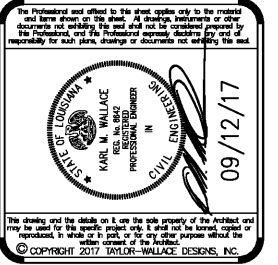
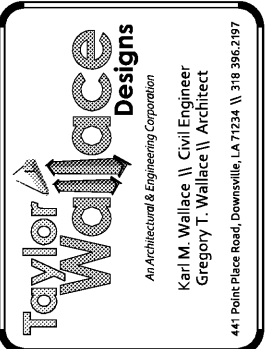
- 2012 INTERNATIONAL BUILDING CODE (IBC) EXCEPTING CHAPTERS 1, 11, & 12
2012 INTERNATIONAL EXISTING BUILDING CODE (IEBC) EXCEPTING CHAPTER 1
2012 INTERNATIONAL MECHANICAL CODE (IMC)
2012 INTERNATIONAL PLUMBING CODE (IPC)
2012 INTERNATIONAL FUEL GAS CODE (IFGC)
2011 NATIONAL ELECTRICAL CODE (NEC)
2010 ADA ACCESSIBILITY GUIDELINES

GOVERNING ENTITIES HAVING JURISDICTION

STATE OF LOUISIANA - DEPARTMENT OF PUBLIC SAFETY & CORRECTIONS
OFFICE OF STATE FIRE MARSHAL
WEST MONROE, LOUISIANA

GENERAL NOTES

- 1. BY SUBMITTING A BID, THE CONTRACTOR SPECIFICALLY ACKNOWLEDGES AND DECLARES THAT THE DRAWINGS ARE FULL AND COMPLETE AND SUFFICIENT TO ENABLE HIM TO CONSTRUCT THE WORK IN ACCORDANCE WITH ALL APPLICABLE LAWS, STATUTES, BUILDING CODES, ORDINANCES AND REGULATIONS.
2. CONTRACTORS SHALL PERFORM ALL WORK AS SHOWN ON THE DRAWINGS. ALL WORK SHALL BE IN COMPLIANCE WITH THE INTERNATIONAL BUILDING CODE, THE NFPA 101 LIFE SAFETY CODE, RECOGNIZED INDUSTRY STANDARD, CRAFTSMANSHIP STANDARDS IN THE AREA, ALL MANUFACTURER'S RECOMMENDATIONS AND ALL OTHER APPLICABLE CODES AND ORDINANCES.
3. THE ENGINEER/ARCHITECT DOES NOT HAVE CONTROL OR CHARGE OF, AND SHALL NOT BE HELD RESPONSIBLE FOR CONSTRUCTION MEANS, METHODS, TECHNIQUES, SEQUENCES AND PROCEDURES OR FOR THE SAFETY PRECAUTIONS AND PROGRAMS IN CONNECTION WITH ANY OF THE WORK, OR FOR THE FAILURE OF ANY OF THEM TO CARRY OUT THE WORK, IN ACCORDANCE WITH THE CONTRACT DOCUMENTS.
4. DO NOT SCALE DRAWINGS. USE WRITTEN DIMENSIONS ONLY. IMMEDIATELY NOTIFY THE ENGINEER/ARCHITECT OF ANY DISCREPANCIES BETWEEN THESE CONTRACT DOCUMENTS AND ANY EXISTING CONDITION.
5. PRIOR TO SUBMITTING A BID, THE CONTRACTOR SHALL VISIT THE SITE AND ACQUAINT HIMSELF THOROUGHLY WITH ALL EXISTING FACILITIES AND CONDITIONS WHICH WOULD AFFECT HIS PORTION OF THE WORK AND CORRELATE PERSONAL OBSERVATIONS WITH REQUIREMENTS OF THE CONTRACT DOCUMENTS. FAILURE TO DO SO SHALL NOT RELIEVE THE CONTRACTOR FROM THE RESPONSIBILITY OF INSTALLING THE WORK TO MEET SAID CONDITIONS.
6. IF THE CONTRACTOR FINDS ANY DETAIL, CONSTRUCTION PROCEDURE OR MATERIAL SHOWN ON THE DRAWINGS WHICH HE BELIEVES IS NOT SATISFACTORY FOR THE USE SHOWN, HE SHALL NOTIFY THE ENGINEER/ARCHITECT OF RECORD.
SIGNING OF THE CONTRACT AND STARTING WORK SHALL INDICATE HIS ACCEPTANCE AND AGREEMENT WITH ALL DETAIL, CONSTRUCTION PROCEDURES, AND MATERIALS SO SHOWN AND SHALL INDICATE HIS WILLINGNESS TO WARRANT THE WORK.
7. THE CONTRACTOR SHALL TAKE FIELD MEASUREMENTS AND CAREFULLY EXAMINE AND VERIFY FIELD CONDITIONS AND SHALL CAREFULLY COMPARE SUCH FIELD MEASUREMENTS, CONDITIONS AND OTHER INFORMATION KNOWN TO THE CONTRACTOR WITH THE DRAWINGS BEFORE SUBMITTING A BID OR COMMENCING WITH ANY CONSTRUCTION ACTIVITIES. ERRORS, INCONSISTENCIES OR OMISSIONS DISCOVERED SHALL BE REPORTED TO THE ENGINEER/ARCHITECT OF RECORD AND SHALL NOT CONSTITUTE A CHANGE ORDER.



PROJECT: A NEW STRIP SHOPPING CENTER FOR RAY ANDING
NORTH 7TH WEST MONROE, LOUISIANA

PROJECT NO.: B\_070517
REVISIONS table with columns for No., Description, Date.
DRAWN BY: TDL
CHECKED BY: KMW
DATE: 09/12/17
SCALE: AS NOTED
SHEET

T-1.0
SCALE: NONE
TITLE SHEET