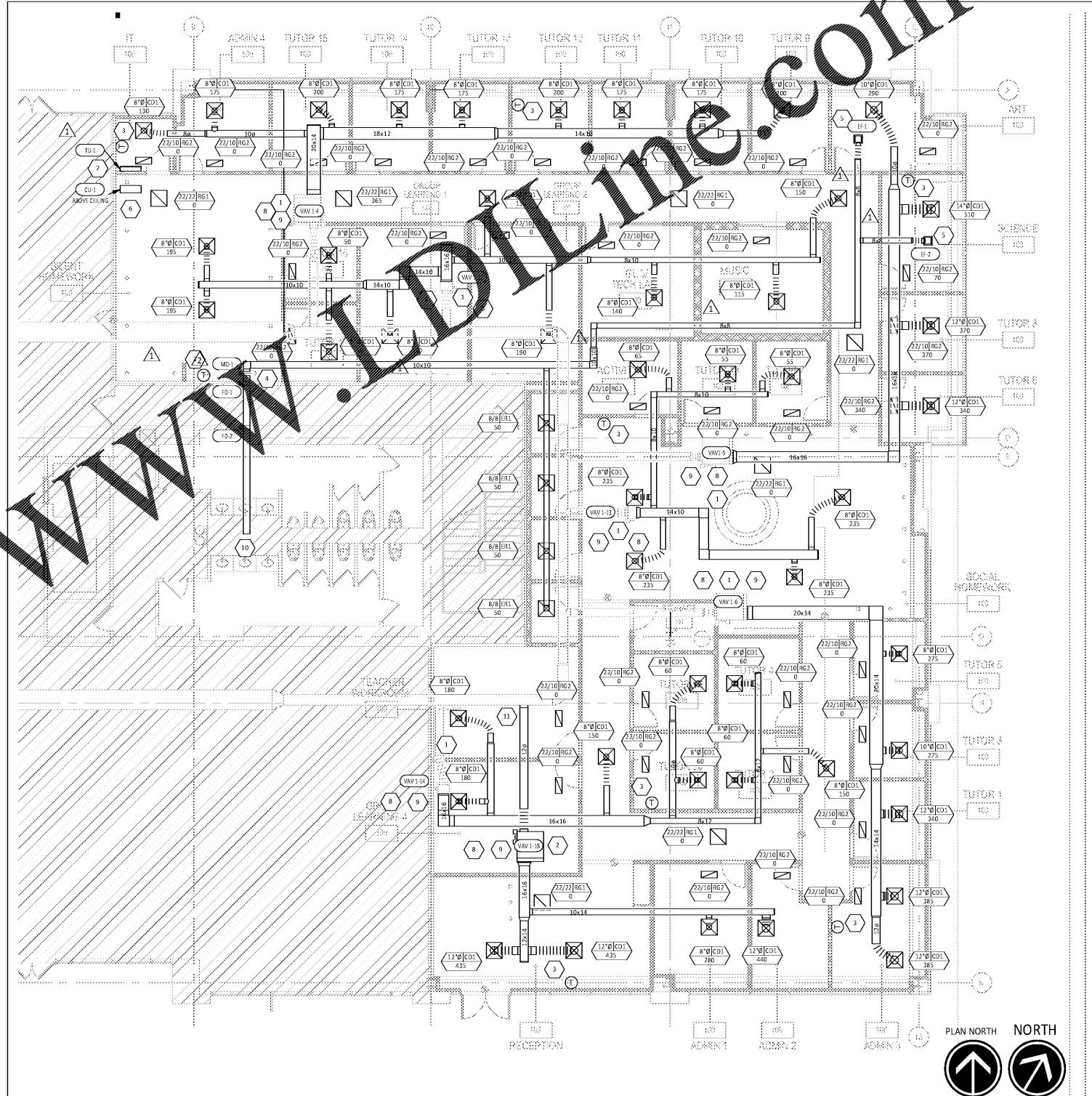


Order Plans @

WWW.WJDILLING.COM

HVAC PLAN NOTES

- 1 EXISTING VAV UNIT TO REMAIN IN EXISTING LOCATION
- 2 INSTALL VAV TERMINAL UNITS PER MANUFACTURER'S INSTALLATION INSTRUCTIONS.
- 3 PROVIDE 24/7 PROGRAMMABLE THERMOSTAT WITH TEMPERATURE SENSOR FOR VAV ZONE AT THIS LOCATION @ 5'-0" AFF. COORDINATE LOCATION WITH EQUIPMENT AND WALL MOUNTED ARTWORK. PROVIDE WITH TAMPERPROOF COVER.
- 4 INSTALL MOTORIZED DAMPER AND FIRE DAMPER IN EXHAUST DUCT LEADING TO MAIN BUILDING EXHAUST
- 5 INSTALL INLINE EXHAUST FAN PER MANUFACTURER'S INSTALLATION INSTRUCTIONS.
- 6 INSTALL MINI SPLIT CONDENSING UNIT ABOVE THE CEILING.
- 7 PROVIDE MITSUBISHI MINI SPLIT SYSTEM FOR COOLING IT ROOM. SYSTEM TO BE PROVIDED WITH MITSUBISHI WIRELESS REMOTE CONTROL.
- 8 PROVIDE BALANCE DAMPERS ON OUTSIDE AIR DUCT AND RETURN DUCT BEFORE TRANSITIONING INTO RETURN AIR SIDE OF AIR HANDLING UNIT.
- 9 PROVIDE DUCT MOUNTED SMOKE DETECTOR IN RETURN AIR STREAM.
- 10 CONNECT EXHAUST DUCT TO MAIN BUILDING EXHAUST
- 11 CONNECT TO EXISTING 16/16 FRESH AIR DUCT



1 HVAC PLAN
1/8" = 1'-0"



ISSUANCE/REVISIONS	
▲	ISSUE FOR PERMIT 08/19/19
▲	REV 1 PER CITY 08/21/19
▲	REV 2 PER CITY 08/21/19
▲	REV 3 PER CITY 08/26/19
▲	REV 4 PER CITY 08/29/19
▲	REV 5 PER CLIENT AND ISSUE FOR BID 08/30/19



North Carolina Firm Registration
NCBOE: P-0612
Sec of State: 0909178

COPYRIGHT 2019
THIS DRAWING IS AN INSTRUMENT OF SERVICE AND AS SUCH REMAINS THE PROPERTY OF NATIONAL ENGINEERING, LTD. PERMISSION FOR USE OF THIS DOCUMENT IS LIMITED AND CAN BE EXTENDED ONLY BY WRITTEN AGREEMENT WITH NATIONAL ENGINEERING, LTD.

Drawn By KAT	Checked By RTJ
Scale 1/8" = 1'-0"	Date 07.23.2019

Job No:
1902037
Sheet No:
M100