

SECTION 13930 - WET PIPE FIRE SUPPRESSION SPRINKLERS
 PART 1 GENERAL
 1.1 SUMMARY
 A. Section includes wet pipe sprinkler system, system design, installation, and certification.
 1.2 REFERENCES
 A. National Fire Protection Association:
 1. NFPA 13 - Installation of Sprinkler Systems.
 1.3 SYSTEM DESCRIPTION
 A. System to provide coverage for building areas noted.
 B. Provide hydraulically designed system to NFPA 13 in accordance with the hazard schedule shown on the drawings.
 C. Determine volume and pressure of incoming water supply from water flow test data.
 D. Interface system with building fire alarm system.
 1.4 SUBMITTALS
 A. Shop Drawings: Indicate layout of finished ceiling areas indicating sprinkler locations coordinated with ceiling installation. Indicate detailed pipe layout, hangers and supports, sprinklers, components and accessories. Indicate system controls.
 B. Product Data: Submit data on sprinklers, valves, and specialties, including manufacturers catalog information. Submit performance ratings, rough-in details, weights, support requirements, and piping connectors.
 C. Design Data: Submit design calculations.
 1.5 CLOSEOUT SUBMITTALS
 A. Project Record Documents: Record actual locations of sprinklers and deviations of piping from drawings. Indicate drain and test locations.
 B. Operation and Maintenance Data: Submit components of system, servicing requirements, record drawings, inspection data, replacement part numbers and availability, and location and numbers of service depot.
 1.6 QUALITY ASSURANCE
 A. Perform Work in accordance with NFPA 13 and NYC.
 B. Maintain one copy of each document on site.
 1.7 EXTRA MATERIALS
 A. Furnish extra sprinklers under provisions of NFPA 13.
 B. Furnish metal storage cabinet; coordinate the location with the tenant's representative.
 PART 2 PRODUCTS
 2.1 SPRINKLERS
 A. Refer to the schedule of the drawings for the types of heads.
 PART 3 EXECUTION
 3.1 INSTALLATION
 A. Install in accordance with NFPA 13 and NYC local requirements.
 B. Place pipe runs to minimize obstruction to other work.
 C. Install piping in concealed spaces above finished ceilings.
 D. Center sprinklers in two directions in ceiling tile and install piping offsets.
 E. Install guards on sprinklers in the walk-in cooler and at any location where the head is less than 7' from the walking surface or maintenance platform.
 3.2 CLEANING
 A. Flush entire piping system of foreign matter.
 END OF SECTION

SPRINKLER HEAD SCHEDULE					
QTY.	DESCRIPTION	TEMPERATURE [°F]	K-VALUE	MANUFACTURER	MODEL
82	WHITE RECESSED PENDANT WITH WHITE ESCUTCHEON	155	5.6	RELIABLE	F1FR

FIRE PROTECTION SCHEDULE			
DESCRIPTION	CEILING	HEIGHT	HAZARD
ACTIVITY	LAY-IN	9'-0"	LIGHT
ADMIN ROOMS	LAY-IN	9'-0"	LIGHT
ART	LAY-IN	9'-0"	ORD. HAZ. 1
CORRIDORS	LAY-IN	8'-0"	LIGHT
GROUP LEARNING	LAY-IN	9'-0"	LIGHT
HOMERWORK AREA	LAY-IN	9'-0"	LIGHT
IT	LAY-IN	9'-0"	LIGHT
MUSIC	LAY-IN	9'-0"	LIGHT
RECEPTION	LAY-IN	9'-0"	LIGHT
RESTROOMS	LAY-IN	9'-0"	LIGHT
SCIENCE	LAY-IN	9'-0"	ORD. HAZ. 1
STORAGE	LAY-IN	9'-0"	ORD. HAZ. 1
TEACHER WORKROOM	LAY-IN	9'-0"	LIGHT
TECH LAB	LAY-IN	9'-0"	LIGHT
TUTOR ROOMS	LAY-IN	9'-0"	LIGHT

FIRE PROTECTION SCHEDULE NOTES
 A. CEILING HEIGHT SHOWN IS APPROXIMATE. SEE ARCHITECTURAL REFLECTED CEILING PLAN FOR EXACT CEILING HEIGHT.

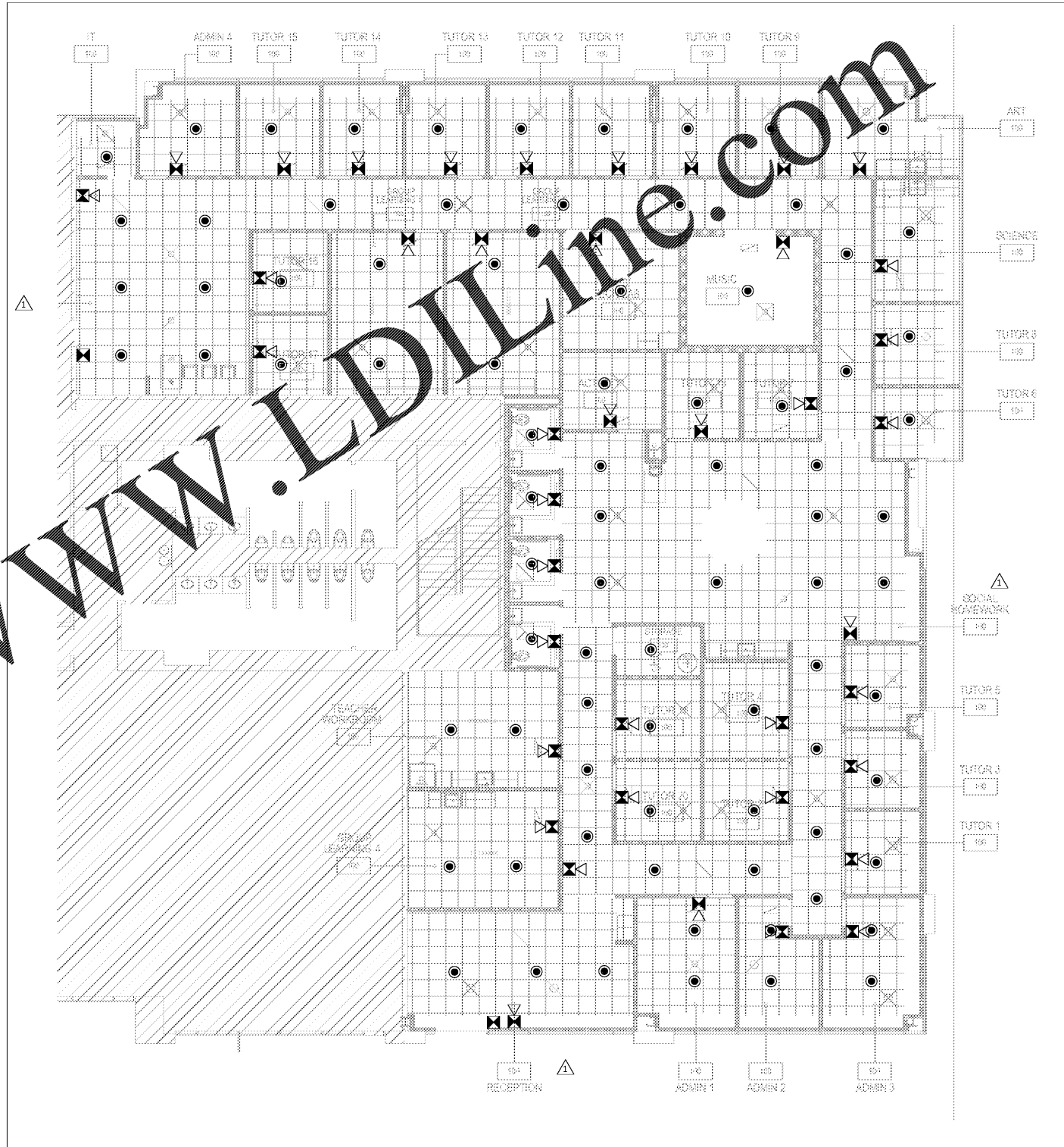
MATERIAL SCHEDULE		
CATEGORY	APPLICATION	FINISHABLE
EXPOSED STRUCTURE	CONCRETE	WHITE UPPERMOUTH
SPRINKLER HEAD	GYPSUM BOARD CEILING	CONCEALED WHITE PENDANT WITH WHITE ESCUTCHEON
	LAY-IN CEILING	CONCEALED WHITE PENDANT WITH WHITE ESCUTCHEON

FIRE PROTECTION GENERAL NOTES

FIRE PROTECTION WORK SHALL BE DONE IN ACCORDANCE WITH THE BUILDING CODE, LOCAL FIRE DEPARTMENT STANDARDS, AND THE AUTHORITY HAVING JURISDICTION. SEE SHEET ADD0 FOR THE PREVAILING CODES.
 A. PROVIDE HEAD LAYOUT AND FIRE ALARM SYSTEM IN THE SPACES SHOWN TO SUIT THE NEW FLOOR PLAN. PROVIDE NEW HEADS AND DEVICES AS NECESSARY FOR A COMPLETE SYSTEM. PROVIDE HYDRAULIC CALCULATIONS FOR REVISED FIRE PROTECTION SYSTEM.
 B. COORDINATE HEAD LAYOUT WITH EXPOSED DUCTWORK, LIGHT FIXTURES, HVAC EQUIPMENT, AND ARCHITECTURAL CEILING ELEMENTS. SEE ARCHITECTURAL REFLECTED CEILING PLAN FOR LOCATIONS. PROVIDE HEADS IN LAY-IN CEILINGS AT QUARTER POINTS ALONG LONG AXIS OF CEILING TILES. SUBMIT HEAD LAYOUT SHOP DRAWINGS TO ARCHITECT PRIOR TO SUBMITTING FOR PERMIT APPROVAL.
 C. OBTAIN PERMITS, APPROVALS, AND INSPECTIONS FOR REVISED FIRE PROTECTION AND ALARM SYSTEMS.
 D. CEILING HEIGHTS AND CEILING FIXTURE PLACEMENTS SHOWN ARE APPROXIMATE. SEE ARCHITECTURAL RCP FOR EXACT CEILING HEIGHTS AND CEILING FIXTURE DIMENSIONS.

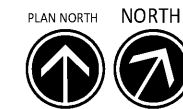
FIRE ALARM SYMBOLS

ANN	FIRE ALARM ANNUNCIATOR PANEL
MS	MANUAL PULL STATION
DC	DRY CHEMICAL SYSTEM PULL STATION
SH	SPEAKER/HORN/STROBE (UNLESS NOTED)
SM	DUCT MOUNTED SMOKE DETECTOR



Order Plans @

1 FIRE PROTECTION PLAN
 1/8" = 1'-0"



fusion

FUSION ACADEMY - Charlotte, NC
 3540 TORINGDON WAY, SUITE 100
 CHARLOTTE, NC 28277
 FIRE PROTECTION PLAN

788 Morrison Road
 Columbus, Ohio 43230
 Phone: (614) 751-9670
 Fax: (614) 552-5240
 Contact: Rich Jones
 (614) 308-2022
 RT.Jones@NationalEngineering.com

NATIONAL ENGINEERING
 RICHARD T. JONES, P.E.
 ENGINEER

ISSUANCE/REVISIONS
 ISSUE FOR PERMIT 08/19/19
 REV 1 PER CITY 08/21/19
 REV 2 PER CITY 08/21/19
 REV 3 PER CITY 08/26/19
 REV 4 PER CITY 08/29/19
 REV 5 PER CLIENT AND ISSUE FOR BID 08/30/19

Signed 08.30.2019

North Carolina Firm Registration
 NCBOE: P-0612
 Sec of State: 0909178

COPYRIGHT 2019
 THIS DRAWING IS AN INSTRUMENT OF SERVICE AND AS SUCH REMAINS THE PROPERTY OF NATIONAL ENGINEERING, LTD. PERMISSION FOR USE OF THIS DOCUMENT IS LIMITED AND CAN BE EXTENDED ONLY BY WRITTEN AGREEMENT WITH NATIONAL ENGINEERING, LTD.

Drawn By JEJ	Checked By RTJ
Scale As indicated	Date 07.23.2019
Job No. 1902037	Sheet No. F100