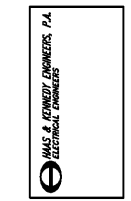




SCALE



CONSULTANT

A REMODEL FOR:
KROGER GA-429
 730 NORTH MAIN STREET
 CEDARTOWN, GA

PROJECT
8-12-2019
 DATE CONSTRUCTION SET

ELECTRICAL SYMBOLS AND GENERAL NOTES

SHEET TITLE

NO.	DATE	DESCRIPTION

PROJECT NO: 18317
 CIO DWG FILE: GA-429 ED.1
 DRAWN BY: WSM
 CH'D BY: HCK

E0.1
 SHEET NO.

ELECTRICAL NOTES:

- ELECTRICAL WORK SHALL BE IN ACCORDANCE WITH THE MOST RECENT ADOPTED NFPA, NATIONAL ELECTRIC CODE, AND LOCAL CODES.
- ALL MATERIALS, DEVICES, APPLIANCES, AND EQUIPMENT SHALL BE NEW AND LABEL LISTED BY AN APPROVED THIRD PARTY TESTING AGENCY APPROVED BY THIS STATE.
- WIRING SHALL BE COPPER SINGLE CONDUCTORS. MINIMUM WIRE SIZE IS #12 AWG. CONDUCTORS #8 AND LARGER SHALL BE TYPE THHN OR THWN STRANDED. #12 THRU #10 SHALL BE THIN SOLID. WIRE TO LIGHT FIXTURES SHALL BE AS REQUIRED BY UL LABEL. COLOR CODE CONDUCTORS.
- CONDUITS SHALL BE STEEL INDOOR & OUTDOOR. SCHEDULE 40 PVC SHALL BE ALLOWED ONLY BELOW FLOOR SLAB OR GRADE. EMT SHALL BE USED FOR SIZES 1/2" THROUGH 3 1/2".
- CONNECT ALL HVAC, PLUMBING AND OTHER CONTRACTOR OR OWNER FURNISHED EQUIPMENT. VERIFY ALL LOCATIONS OF HVAC, PLUMBING AND OTHER CONTRACTOR OR OWNER FURNISHED EQUIPMENT PRIOR TO ROUGH-IN. CHECK EQUIPMENT SHOP DRAWINGS AND COORDINATE WITH HVAC, PLUMBING, AND ALL OTHER EQUIPMENT CONTRACTORS FOR DISCONNECT SWITCH, CONDUIT, WIRING REQUIREMENTS (THIS INCLUDES VERIFYING IF A NEUTRAL CONDUCTOR IS REQUIRED), FUSE AND BREAKER SIZES, WIRING OF STARTERS, VOLTAGE REQUIREMENTS, AND LOCATIONS. PROVIDE A TIMER FOR ALL PLUMBING RECIRCULATION PUMPS. MAKE ALL NECESSARY REVISIONS TO THESE ITEMS AT NO ADDITIONAL COST TO THE OWNER.
- ELECTRICAL CONTRACTOR SHALL PROVIDE LOAD DATA SHEET, TO THE POWER COMPANY, AT THE BEGINNING OF THE PROJECT, AS PER LOAD BREAKDOWN SHOWN ON PLANS.
- THE ELECTRICAL CONTRACTOR SHALL VISIT THE JOBSITE PRIOR TO SUBMISSION OF BID TO FAMILIARIZE HIMSELF WITH THE CONDITIONS UNDER WHICH THE WORK WILL BE PERFORMED AND THE EXTENT OF WORK REQUIRED. INCLUDE ALL COST IN BID PRICE.
- SUPPORT ALL CONDUITS WITH STRAPS AND CLAMPS. RUN ALL CONDUIT PARALLEL, OR PERPENDICULAR TO BUILDINGS.
- ELECTRICAL DEMOLITION, RELOCATION OF EXISTING EQUIPMENT, CUTTING AND PATCHING REQUIRED FOR THE INSTALLATION OF THIS NEW WORK IS THE RESPONSIBILITY OF THE ELECTRICAL CONTRACTOR. THE EXTENT OF THE WORK REQUIRED SHALL BE DETERMINED DURING THE PRE-BID JOBSITE VISIT.
- ALL ELECTRICAL SYSTEMS AND EQUIPMENT SHALL COMPLY WITH ARTICLE 165 OF THE INTERNATIONAL BUILDING CODE.
- PROVIDE MIN. 24" HORIZONTAL SEPARATION BETWEEN BOXES INSTALLED IN OPPOSITE SIDES OF A SAME WALL AS INDICATED IN N.E.C. 300.21.
- ALL DISCONNECTS SHALL BE HEAVY DUTY RATED, WITH ARC GUARD, AND SHALL HAVE A MECHANICAL INTERLOCK TO PREVENT THE DOOR FROM BEING OPENED, WITHOUT OPERATING THE INTERLOCK. THE MECHANICAL INTERLOCK SHALL ALSO PREVENT ACTIVATING THE SWITCH WHEN THE DOOR IS OPEN. THE MECHANICAL INTERLOCK SHALL BE DEFEATABLE BY A SPECIAL TOOL, AND SHALL BE ILL. LISTED AS PART OF THE DISCONNECT. EXTERNAL OPERATING HANDLE SHALL INDICATE ON A OFF POSITION AND SHALL HAVE LOCK-OPEN PADLOCKING PROVISIONS.
- SERVICE GROUND IMPEDANCE SHALL BE MEASURED, AND SHALL BE 5 OHMS OR LESS. IF UPON MEASUREMENT, SERVICE GROUND READING EXCEEDS 5 OHMS, THEN ADDITIONAL GROUND RODS SHALL BE DRIVEN TO REDUCE READING TO 5 OHMS OR LESS. NOTIFY ENGINEER OF FINAL SERVICE GROUND MEASUREMENT.
- BREAKERS THAT FEED CONTACTORS AND TIME CLOCKS TO BE CURRENT LIMITING TO ALLOW A MAXIMUM LET THRU OF 22K AIC WITH 80K AIC AVAILABLE.
- ALL TERMINATIONS ON PANELS SHALL HAVE DUAL RATED 60°C/75°C LUGS.
- PROVIDE INTERNAL OR EXTERNAL DISCONNECTING MEANS FOR EACH FLUORESCENT LUMINAIRE THAT UTILIZES DOUBLE-ENDED LAMPS AND CONTAIN BALLASTS) THAT CAN BE SERVICED IN PLACE TO COMPLY WITH N.E.C. 410.80(B).
- ELECTRICAL CONTRACTOR TO PROVIDE SEPARATE NEUTRAL FOR EACH BRANCH CIRCUIT TO MEET NEC 200.4. MULTIWIRE BRANCH CIRCUITS, SHARED NEUTRALS WILL NOT BE ALLOWED. FOR FURNITURE BRANCH CIRCUITS, ALL FURNITURE SHALL BE WIRED PER N.E.C. 605. FURNITURE BRANCH CIRCUITS SHALL BE FED WITH SINGLE POLE BREAKERS. INSTALL ILL. APPROVED HANDLE TIES ON SINGLE POLE BREAKERS AS REQUIRED FOR TWO AND THREE CIRCUITS FEEDING FURNITURE. THE ELECTRICAL CONTRACTOR SHALL VERIFY THE FURNITURE SYSTEM IN THE FIELD PRIOR TO CONNECTION AND PROVIDE ADDITIONAL NEUTRAL AND/OR GROUND CONDUCTORS AS REQUIRED. ALL OTHER NEUTRAL CIRCUITS TO HAVE SEPARATE NEUTRAL. HANDLE TIES FOR CONDITIONS WHERE ONE OR MORE EXISTING LIGHT FIXTURES OR RECEPTACLES ARE BEING RELOCATED, THE ENTIRE CIRCUIT MUST BE RENOVATED TO MEET NEC 200.4. THIS MEANS THE ELECTRICAL CONTRACTOR MUST PROVIDE A SEPARATE NEUTRAL FOR EACH RENOVATED CIRCUIT. IF THE ELECTRICAL CONTRACTOR CHOOSES TO USE HANDLE TIES IN LIEU OF SEPARATE NEUTRALS, THIS SHALL BE FIELD MARKED BY SHARED NEUTRAL CIRCUITS BEING RENOVATED ARE CONTINUOUS WITHIN THE PANEL, AND ADJUST THE BREAKERS ACCORDINGLY WITHIN THE PANEL, SO THAT HANDLE TIES CAN BE INSTALLED. THIS MUST BE DONE PRIOR TO BID AND SHALL BE INCLUDED IN THE ELECTRICAL CONTRACTOR'S BID PRICE.
- SERVICE CONDUCTORS SHALL CONFORM TO N.E.C. 230.6.
- ALL METAL HALIDE BALLASTS SHALL BE PULSE START TYPE.
- ALL TELECOMMUNICATIONS CONDUIT, SLEEVES, OR PATHWAYS ARE TO BE LONG KEEPING THROUGH CONDUITS (BENDING POINTS) ARE TO BE INSTALLED PER MANUFACTURERS AND TELECOM CONTRACTORS RECOMMENDATIONS.
- THE ELECTRICAL CONTRACTOR SHALL FIELD SURVEY THE INTERIORS OF ALL PANELS AND SWITCHGEAR IN WHICH BREAKERS ARE BEING INSTALLED, AND VERIFY THAT ALL INTERIOR BUSSING AND FRAMES ARE AVAILABLE PRIOR TO SUBMISSION OF BID. ANY ADDITIONAL BUSSING REQUIRED WITHIN PANELS AND SWITCHGEAR SHALL BE INCLUDED IN BID PRICE.
- NO OPEN FLAME DEVICES SHALL BE UTILIZED TO BEND PVC CONDUIT. ALL HEATING DEVICES SHALL BE ENCLOSED FLAME HEAT GUN OR HEAT ROLLER, NO TORCHES. ALL HEATING METHODS MUST BE APPROVED BY ELECTRICAL ENGINEER PRIOR TO INSTALLATION. ANY CONDUIT THAT HAS BEEN HEATED TO WHERE PVC IS DAMAGED OR DISCOLORED SHALL BE REMOVED AND REPLACED AT NO ADDITIONAL COST.
- ALL BALLASTS IN FLUORESCENT LIGHT FIXTURES THAT ARE CONTROLLED BY OCCUPANCY SENSORS ARE TO BE PROGRAM START BALLASTS.
- ALL BREAKERS THAT FEED TRANSFORMERS WHICH ARE NOT LOCATED IN THE SAME ROOM AS THE TRANSFORMER ARE TO HAVE A PERMANENT BREAKER LOCK AND THE LOCATION OF THE BREAKER SHALL BE FIELD MARKED ON THE TRANSFORMER AS PER NEC 450.4.
- AS PER N.E.C. 230.95 (C), THE PERFORMANCE TEST REPORT SHALL BE PROVIDED FOR AUTHORITY HAVING JURISDICTION, A41 AT THE TIME OF INSPECTION.

FIRE/SECURITY ALARM SYMBOL SCHEDULE

SYMBOL	DESCRIPTION
SD	SMOKE DETECTOR
SDC	DUCT MOUNTED SMOKE DETECTOR. CONNECTED TO FACP. PROVIDED AND INSTALLED BY M.C. CONNECTED BY E.C.
SDT	SMOKE DETECTOR
FA	FIRE ALARM PULL STATION
FAH	FIRE ALARM STROBE. MOUNT 80" AFF.
FAHS	FIRE ALARM HORN/STROBE. MOUNT 80" AFF.
FAHC	FIRE ALARM HORN/STROBE. CEILING MOUNTED OR SUSPENDED FROM STRUCTURE.
FAHCS	FIRE ALARM STROBE. CEILING MOUNTED OR SUSPENDED FROM STRUCTURE.
FAHCSH	FIRE / SECURITY ALARM CONNECTION TO DELAY EGRESS HARDWARE
RS	REMOTE SECURITY SOUNDER
SDC	SECURITY DOOR CONTACT
SC	SECURITY/FIRE ALARM CONTACT/CONNECTION FOR SPECIFIED EQUIPMENT.
MS	SECURITY ALARM MOTION SENSOR.
SEC	SECURITY ALARM CONTROL PANEL.
FACP	FIRE ALARM CONTROL PANEL
FS	SPRINKLER FLOW SWITCH
TS	SPRINKLER TAMPER SWITCH

NOTE:
 NOT ALL SYMBOLS WILL BE USED FOR THIS PROJECT

SYMBOL SCHEDULE

SYMBOL	DESCRIPTION
DP	DISTRIBUTION PANELBOARD.
CC	CONDUIT RUN CONCEALED IN CEILING OR IN WALL.
CF	CONDUIT RUN CONCEALED IN FLOOR OR WALL.
CA	CIRCUIT RUN HOME. NUMBER OF ARROWS INDICATE NUMBER OF CIRCUITS.
TL	TRIGGER TYPE LIGHTING FIXTURE. SEE LIGHTING FIXTURE SCHEDULE.
EB	EMERGENCY BATTERY PACK. SEE LIGHTING FIXTURE SCHEDULE. CONECT AHEAD OF SWITCHES.
SL	STRIP LIGHTING FIXTURE. SEE LIGHTING FIXTURE SCHEDULE.
WC	WALL OR CEILING MTD. LIGHTING FIXTURE. SEE LIGHTING FIXTURE SCHEDULE.
TR	TRACK LIGHTING. SEE LIGHTING FIXTURE SCHEDULE.
MP	MONO POINT TRACK HEAD. SEE LIGHTING FIXTURE SCHEDULE.
PS	PHOTOLUMINESCENT EXIT SIGN.
S1	SINGLE POLE, 120/277 VOLT, 20 AMP, RECESSED WALL SWITCH WITH PLATE. MOUNT WITH CENTER LINE 48" UP.
S2	DOUBLE POLE, 120/277 VOLT, 20 AMP, RECESSED WALL SWITCH WITH PLATE. MOUNT WITH CL 48" UP.
S3	THREE WAY, 120/277 VOLT, 20 AMP, RECESSED WALL SWITCH WITH PLATE. MOUNT WITH CL 48" UP.
MS	FRACTIONAL HP MANUALLY OPERATED MOTOR STARTER WITH BUILT IN OVERLOAD PROTECTION.
GR	DUPLEX, GROUNDING TYPE, 120 VOLT, 20 AMP, 3 WIRE. RECEPTACLE WITH PLATE. PROVIDE #12 GREEN GROUND JUMPER. MOUNT 18" UP UNLESS OTHERWISE SHOWN.
WP	SAME AS GR ABOVE EXCEPT MOUNTED IN WP-08 WEATHERPROOF ENCLOSURE.
TA	SAME AS GR ABOVE EXCEPT MOUNTED ABOVE TABLE OR COUNTER.
GF	SAME AS GR ABOVE EXCEPT GROUND FAULT TYPE.
IG	ISOLATED GROUND RECEPTACLE. PROVIDE PLATE. MOUNT 18" UP UNLESS OTHERWISE NOTED.
CD	CEILING MOUNTED OR CORD DROP RECEPTACLE. SEE ASSOCIATED ESD AND/OR NOTED DESCRIPTION ON POWER PLANS.
FF	FLUSH MOUNTED FLOOR BOX WITH DUPLEX RECEPTACLE, DMVD, AND TRIM.
FFQ	FLUSH MOUNTED FLOOR BOX WITH QUAD RECEPTACLE, DMVD, AND TRIM.
SP	SPECIAL USE RECEPTACLE. VOLTAGE, PHASE AND AMPERAGE BASED ON LOAD SERVED. COORDINATE NEMA CONFIGURATION WITH EQUIPMENT REQUIREMENTS.
TS	TEMPERATURE SENSOR - COORDINATE REQUIREMENTS WITH THE RETROFITTING INSTALLATION CONTRACTOR.
DT	DETROIT TERMINATION - COORDINATE REQUIREMENTS WITH THE RETROFITTING INSTALLATION CONTRACTOR.
PL	PLUGMOLD. SEE SPECIFICATIONS.
DS	DISCONNECT SWITCH AMPERAGE AND FUSES AS SHOWN ON DRAWINGS.
JB	JUNCTION BOX. 120V UNLESS INDICATED OTHERWISE.
EC	ELECTRICAL CONNECTION UNDER CASE.
MF	MOTOR OR FAN CONNECTION. SEE ASSOCIATED NOTES FOR VOLTAGE, PHASE, HP INFORMATION.
TD	FLUSH MOUNTED TELE/DATA OUTLET. 18" A.F.F. RUN ONE 3/4" CONDUIT W/ PULL STRING TO 12" ABOVE CEILING OR INTO STRUCTURE ABOVE. COORDINATE EXACT LOCATIONS, MOUNTING HEIGHTS AND REQUIREMENTS WITH THE LOW VOLTAGE CABLING CONTRACTOR AND BEACON DRAWINGS.
SC	SAME AS TD ABOVE EXCEPT MOUNTED 6" ABOVE COUNTER TOP OR 80" HIGH ON WALL OR COLUMN.
SO	FLUSH MOUNTED SCALE COMMUNICATIONS OUTLET. PROVIDE 3/4" CONDUIT W/ PULL WIRE TO ESD ROOM. COORDINATE EXACT LOCATIONS, MOUNTING HEIGHTS AND REQUIREMENTS WITH THE LOW VOLTAGE CABLING CONTRACTOR AND BEACON DRAWINGS.
TO	FLUSH MOUNTED DATA OUTLET. RUN ONE 3/4" CONDUIT W/ PULL STRING TO 12" CEILING OR INTO STRUCTURE ABOVE. COORDINATE EXACT LOCATIONS AND REQUIREMENTS WITH THE LOW VOLTAGE CABLING CONTRACTOR AND BEACON DRAWINGS.
FPN	FUSE PER NAMEPLATE
LI	LIGHTING CONTACTOR IN ENCLOSURE. SEE ASSOCIATED KEY NOTE FOR SPECIFICS.
LP	LOW VOLTAGE PUSHBUTTON. SEE DRAWINGS FOR SPECIFICS.
LN	LOW VOLTAGE AUDIBLE NOTIFICATION DEVICE. SEE DRAWINGS FOR SPECIFICS.
PP	POWER POLE. CHECKLANE POWER POLES PROVIDED BY OWNER. ALL OTHERS PROVIDED BY ELECTRICAL CONTRACTOR. SEE SPECIFICATIONS.
CD	CORD DROP RECEPTACLE. SEE ESD-16 AND ESD-16A. COORDINATE NEMA CONFIGURATION WITH EQUIPMENT SERVED. PROVIDE SO CORD WITH STRAIN RELIEF AS PER SPECIFICATIONS. USE WHITE SO CORD IN SALES AREA AND OTHER AREAS IN VIEW OF CUSTOMERS (INDICATED WITH 'W'). PROVIDE BLACK SO CORD IN AREAS NOT IN VIEW OF CUSTOMERS (INDICATED WITH 'B').
LS	LIGHT LEVEL SENSOR.
RL	REFRIGERANT LEAK DETECTION SYSTEM NOTIFICATION DEVICE

NOTE:
 NOT ALL SYMBOLS WILL BE USED FOR THIS PROJECT

Order Plans