

DATE	RELEASE
08.26.19	FOR CONSTRUCTION

CHECKED BY: JMJ
DRAWN BY: JMJ

NOTE: THESE DRAWINGS ARE THE PROPERTY OF ARIE KOHN ARCHITECTS, P.C. AND SHALL NOT BE USED, REPRODUCED, AND/OR MODIFIED WITHOUT WRITTEN CONSENT FROM ARIE KOHN ARCHITECTS, P.C.

DRAWINGS FOR:
BRUCE DANIELS
CAROLINA RE HOLDINGS, LLC
P.O. BOX 711
GREENWOOD, SC 29649
646-462-5481

AKA
ARIE KOHN ARCHITECTS, PC
74 WOODSTOCK ROAD, ROSWELL, GA. 30075
TEL: (770) 642-9030 FAX: (770) 642-3765
EMAIL: arie@akohmarch.com

PROFESSIONAL SEAL
MICHAEL JONES
07/26/19

PROJECT: B1916
DATE: 07/22/2019
BURGER KING RESTAURANT
205 LONGSTREET ST.
KINGSTREE, SC 29556

SYMBOL LEGEND

DETAIL	DESCRIPTION
⊖	DUPLEX 125V-20A-2 POLE-3 WIRE STRAIGHT BLADE RECEPTACLE OUTLET - WALL MTD. (24" A.F.F. - U.O.N.)
⊖	SINGLE 125V-20A-2 POLE-3 WIRE STRAIGHT BLADE RECEPTACLE OUTLET - WALL MTD. (24" A.F.F. - U.O.N.)
1	DRYWALL P-RING
B	BUMP-BAR
▽	TELEPHONE OUTLET FOR P.O.S. MODEM (ALL OUTLETS HOMERUN IN 3/4" CONDUIT TO TELEPHONE BACKBOARD) MOUNTED 60" A.F.F.
P	P.O.S. PRINTER DEVICE
□	P.O.S. REGISTER DEVICE
D	VIDEO DISPLAY DEVICE (CEILING MTD.)
■	SECURITY CAMERA BY "PRIVID-EYE" (CONTACT: LARRY SATTLER, 954-581-1756)
⊖	SECURITY MONITOR BY "PRIVID-EYE" (CONTACT: LARRY SATTLER, 954-581-1756)
⊖	DUPLEX RECEPTACLE ⊙ 84" A.F.F. (VERIFY) CONNECT TO P.O.S. CIRCUIT

GENERAL NOTES:

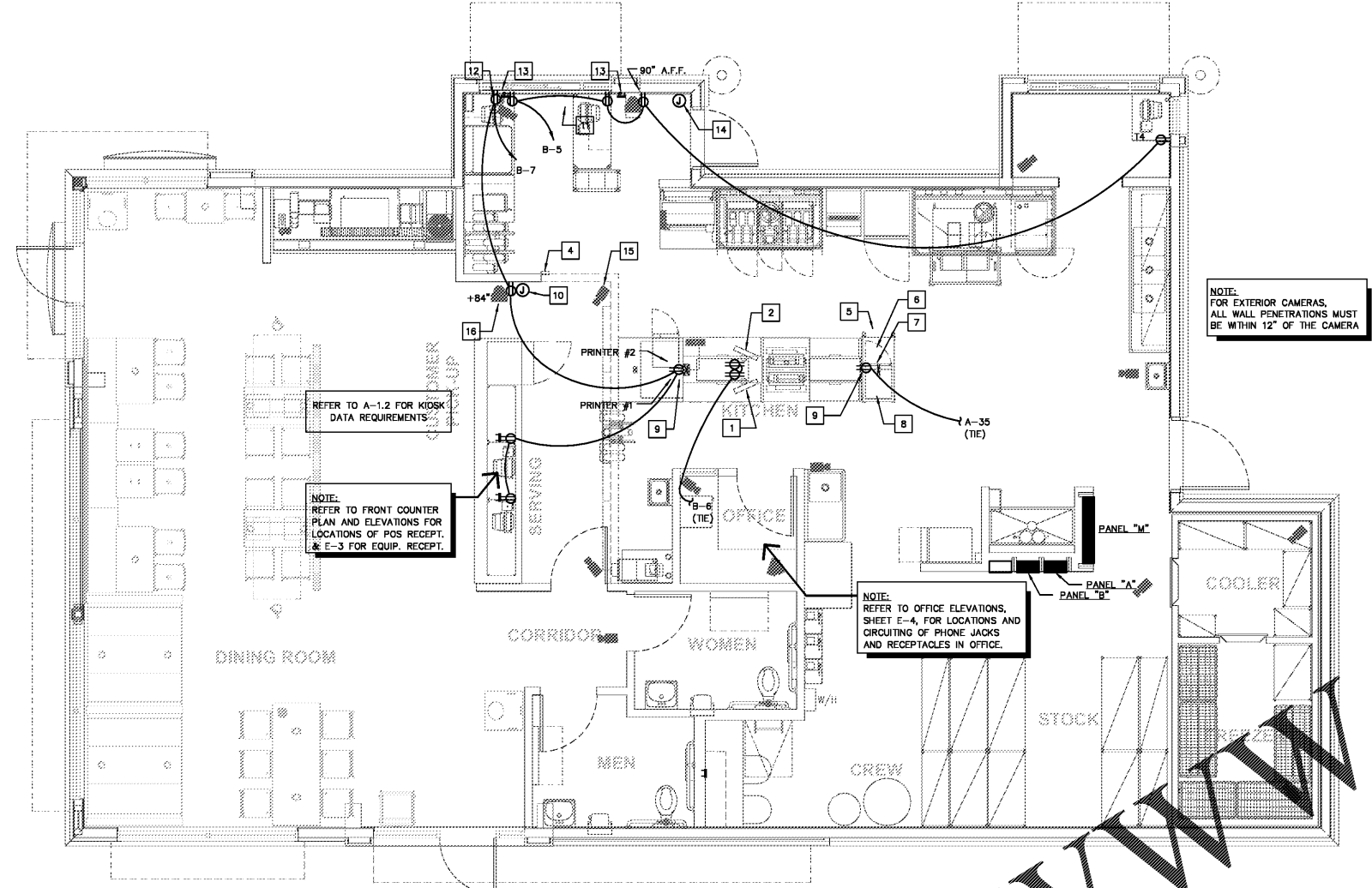
- A. CONTRACTOR TO VERIFY WHICH SYSTEM IS TO BE INSTALLED. REQUIREMENTS CAN VARY DEPENDING ON MANUFACTURER. THE CONTRACTOR IS CAUTIONED TO VERIFY ALL REQUIREMENTS PRIOR TO CONSTRUCTION.
- B. CONTRACTOR TO PROVIDE ALL RECEPTACLE OUTLETS, CONDUITS AND J-BOXES AS INDICATED ON PLAN.
- C. CONTRACTOR TO VERIFY AND COORDINATE LOCATION OF VIDEO DISPLAY DEVICES W/ BURGER KING REPRESENTATIVE.
- D. MAINTAIN P.O.S. CABLES A MIN. OF 12" AWAY FROM ANY FLUORESCENT LIGHT SOURCES ABOVE CEILING.
- E. ELECTRICAL CONTRACTOR TO IDENTIFY P.O.S. JUNCTION BOXES ABOVE CEILING "GROUND P.O.S. ONLY".

KEYED PLAN NOTES:

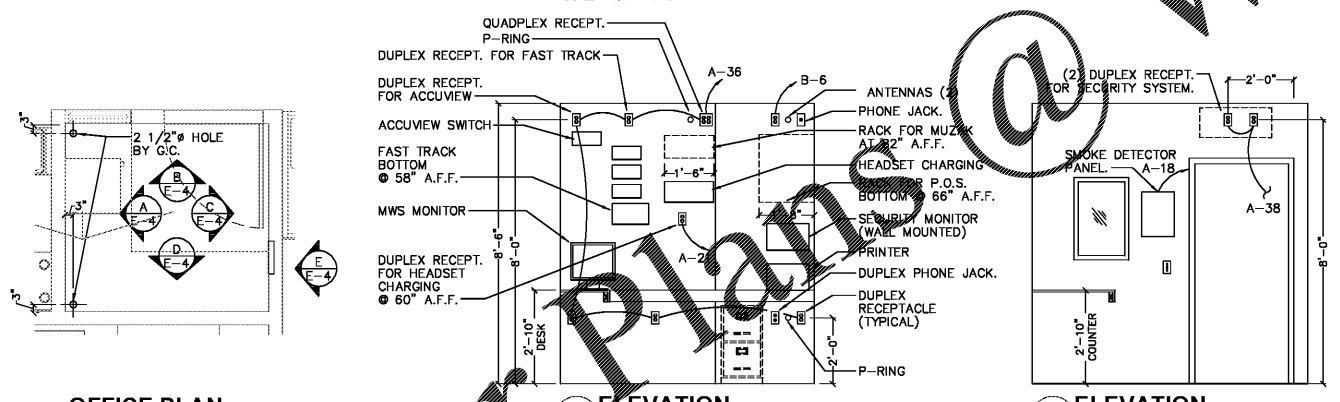
- 1 DISPLAY #1 AND BUMP BAR. PROVIDE 4" CONDUIT FOR VIDEO, BUMP BAR AND PRINTERS. PROVIDE CEILING MOUNTED RECEPTABLES. (TYPICAL FOR DISPLAY #1, #2 AND #3)
- 2 DISPLAY #2 AND BUMP BAR
- 3 DISPLAY #3 AND BUMP BAR
- 4 STOCK LEVEL LIGHT CONTROLLER ⊙ 60" A.F.F.
- 5 TOTAL SERVICE TIME DISPLAY
- 6 GRADE DISPLAY
- 7 CLOCK-RECEPT. IN CHASE
- 8 STOCK LEVEL DISPLAY RECEPT. IN CHASE
- 9 EQUIPMENT MOUNTED RECEPTABLES BY K.E.S. CIRCUITING RUNS BY E.C.
- 10 J-BOX W/ 3/4" CONDUIT ⊙ 84" A.F.F.
- 11 CEILING MOUNTED D/T TIMER WINDOW TIME DISPLAY
- 12 90" A.F.F. FOR D/T LAND MONITOR
- 13 P-RING ⊙ 24" A.F.F. W/ 1" CONDUIT TO ABOVE CLG.
- 14 J-BOX W/ 1" CONDUIT TO CLG. FOR PHU DATA CABLE. (LOCATION NEXT TO PHU RECEPT.)
- 15 SECURITY CAMERA (TYPICAL)
- 16 SECURITY MONITOR (TYPICAL)

NOTES:

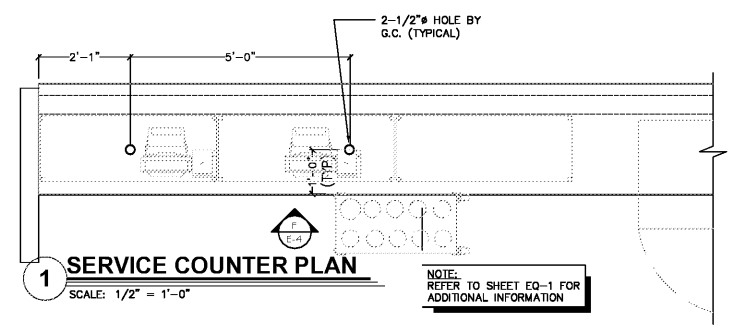
- 1. (1) DUPLEX RECEPTACLE PER SCREEN
- 2. (1) P-RING PER SCREEN WITH 1" CONDUIT TO ABOVE CEILING. DATA CABLE TO RUN TO MEDIA PLAYER(S) IN OFFICE
- 3. VERIFY NUMBER OF SCREENS USED (3 OR 4) PRIOR TO INSTALLATION OF RECEPTABLES AND P-RINGS.
- 4. DETERMINE SCREEN AND MOUNTING BRACKET MODELS PRIOR TO INSTALLATION OF RECEPTABLES AND P-RINGS. REFER TO SHEET E-2, POWER PLAN FOR CIRCUITING REQUIREMENTS.



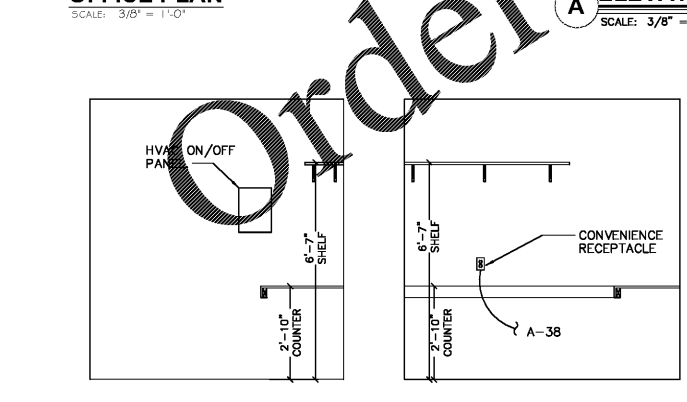
TECHNOLOGY PLAN
SCALE: 1/4" = 1'-0"



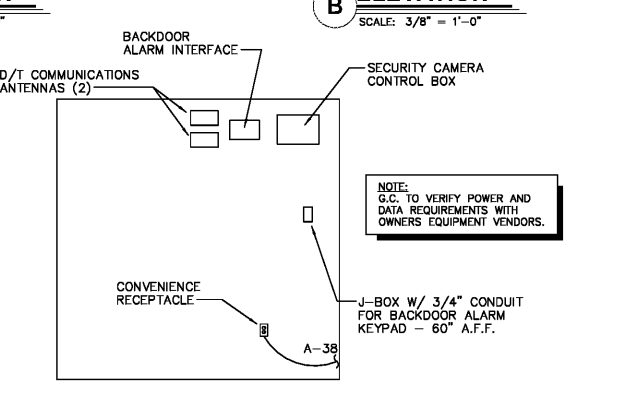
OFFICE PLAN
SCALE: 3/8" = 1'-0"



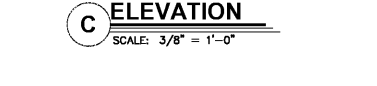
SERVICE COUNTER PLAN
SCALE: 1/2" = 1'-0"



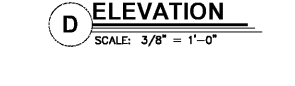
ELEVATION A
SCALE: 3/8" = 1'-0"



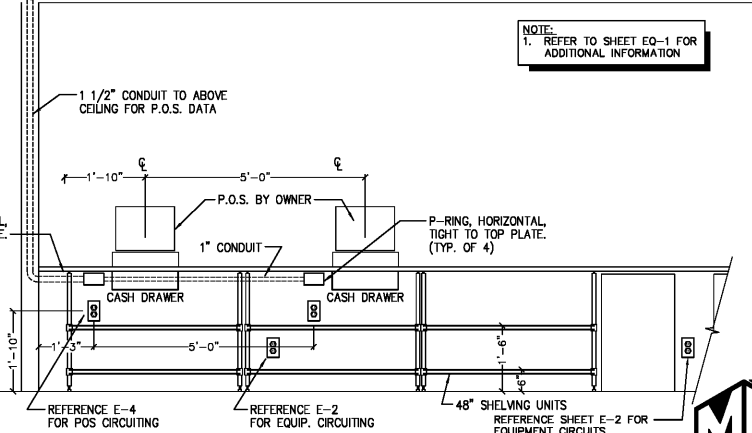
ELEVATION B
SCALE: 3/8" = 1'-0"



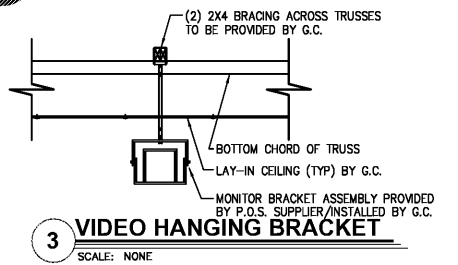
ELEVATION C
SCALE: 3/8" = 1'-0"



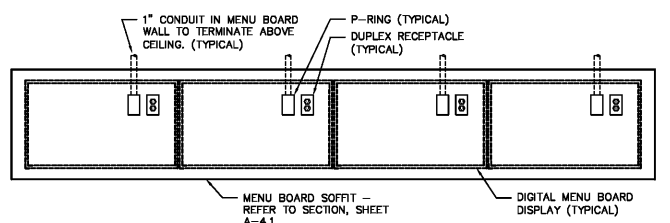
ELEVATION D
SCALE: 3/8" = 1'-0"



KITCHEN SIDE COUNTER ELEVATION
SCALE: 1/2" = 1'-0"



3 VIDEO HANGING BRACKET
SCALE: NONE



2 DIGITAL MENU BOARD INSTALLATION
SCALE: 1/2" = 1'-0"



MARSHALL & BOLLWERK ENGINEERING, INC.
8881 Highway 92, Suite 400
Woodstock, Ga. 30189
p: (678) 785-0333, f: (678) 325-4559
e: mbe@mbenct.net