

DRAWING INFORMATION

DATE	DESCRIPTION	BY
08-01-19	FOR CONSTRUCTION	KM

N-C-A

CONSULTANTS / GROUP

4585 140TH AVE. NORTH, SUITE #1001
 CLEARWATER, FLORIDA
 PHONE: (877) 530-0078
 CALL NCA MARKETING FOR PRICING
 NCA JOB# 19938

B1916

DATE	RELEASE
	FOR CONSTRUCTION

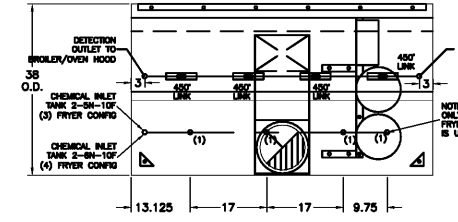
CHECKED BY: AK
 DRAWN BY: CY

NOTE:
 THESE DRAWINGS ARE THE PROPERTY OF ARE Kohn Architects, P.C. AND SHALL NOT BE USED, REPRODUCED, AND/OR MODIFIED WITHOUT WRITTEN CONSENT FROM ARE Kohn Architects, P.C.

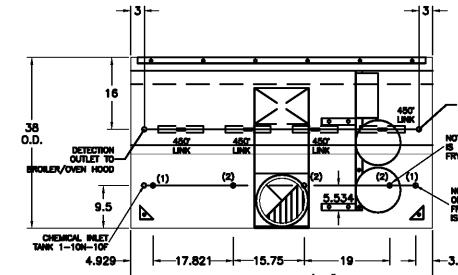
FIRE PROTECTION SYSTEM NOTES
 ANSUL R-102-MS

IF (1) LOCATION OF FIRE PROTECTION NOZZLES MUST BE VERIFIED IN RELATION TO THE COOKING EQUIPMENT, PRIOR TO INSTALLATION OF THE EQUIPMENT. NOT INCLUDING APPLIANCE DRIPS WITH SURFACE MOUNTED DETECTION BRACKETS, BY GAYLORD. ANSUL TANKS, WARDMANT ANSUL, RADIATION RESISTANT PIPING, CHEMICAL LINES INCLUDING DUCT AND PLENUM WITH NOZZLES INSTALLED. MARK MANIFOLD INSTALLED ON TOP OF VENTILATOR WITH APPLIANCE DRIPS TERMINATING AT ROOF OF VENTILATOR WITH HOOD PENETRATION FITTING AND CURVE MANIFOLD INSTALLED ON TOP OF SHEET 1.1 FRONT ELEVATION. IF THE FOUR FRYER CONFIGURATION, AS SHOWN ON SHEET 1.1 ELEVATION #2, IS USED, OR ANY OTHER FRYER CONFIGURATION IS USED, THE AMEREX DISTRIBUTOR SHALL REPORTION THE NOZZLES BY "MARKING" OVER AS REQUIRED.

- EXCLUDES:
- PLANS AND PERMITS
 - UNION LABOR AND PREVAILING WAGE
 - PARTS AND INSTALLATION OF CHEMICAL AND DETECTION LINES FROM TANK(S) TO CONNECTION POINTS ON HOOD
 - TANKS AND INSTALLATION OF TANKS AND ALL RELATED COMPONENTS
 - GAS VALVES(S) AND INSTALLATION OF GAS VALVES(S)
 - PARTS FOR AND INSTALLATION OF REMOTE MANUAL PULL STATIONS(S)
 - ELECTRICAL DISCONNECTS
 - PARTS AND LABOR FOR ANY ELECTRICAL INTERCONNECTIONS
 - JOB SITE, REPOSITIONING OF TERMINATED APPLIANCE
 - DRIPS IF COOKING EQUIPMENT IS NOT INSTALLED PER GAYLORD APPROVED DRAWINGS
 - SHIP TEST AND CERTIFICATION
 - APPLIANCE PIPE DROPS AND NOZZLES
 - CHEMICAL
 - DETECTOR CABLE
 - FUSIBLE LINKS AND LINKAGE
 - HANGING RIGS RELIABLE(S)
 - HANDHELD FIRE EXTINGUISHER(S)
 - INSPECTION AND STARTING

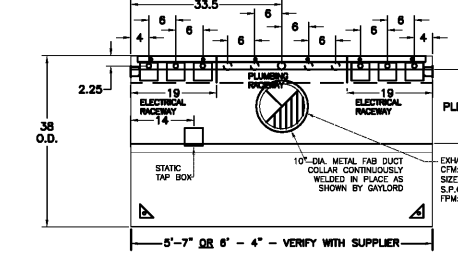


ANSUL FIRE SYSTEM PIPING LOCATIONS
 PLAN VIEW - (OPTIONAL)

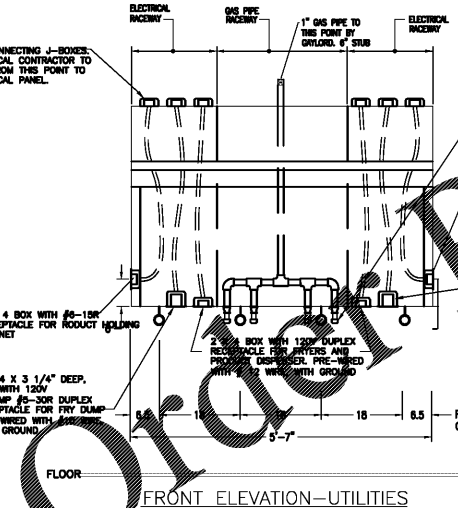


ANSUL FIRE SYSTEM PIPING LOCATIONS
 PLAN VIEW - AMEREX

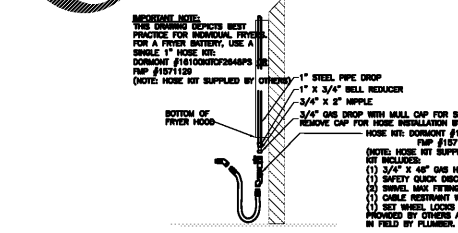
NOTE: PROVIDE WITH 10" TO 10X10 SQUARE-TO-ROUND AT DISCHARGE COLLAR



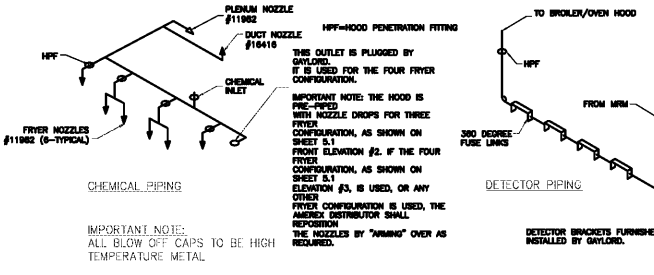
ANSUL FIRE SYSTEM PIPING LOCATIONS
 PLAN VIEW UTILITIES



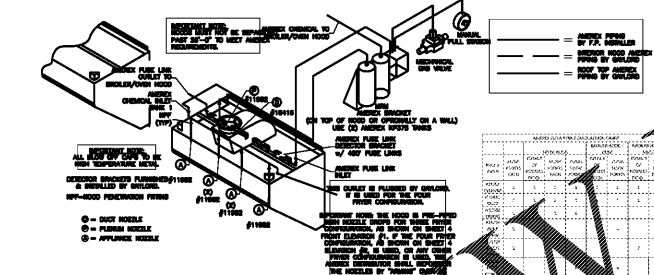
FRYER/HOOD DETAILS
 FRONT ELEVATION-UTILITIES



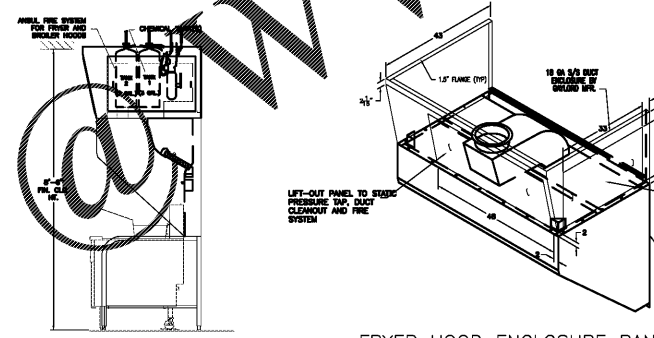
FRYER/HOOD DETAILS
 TYPICAL GAS APPLIANCE CONNECTION



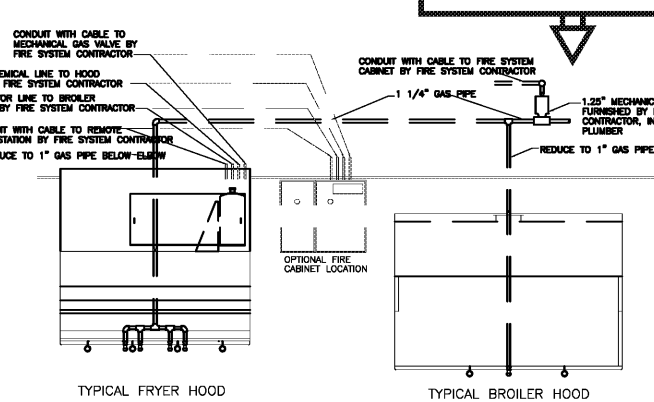
FRYER/HOOD DETAILS
 AMEREX PRE-PIPING DETAILS FRYER HOOD



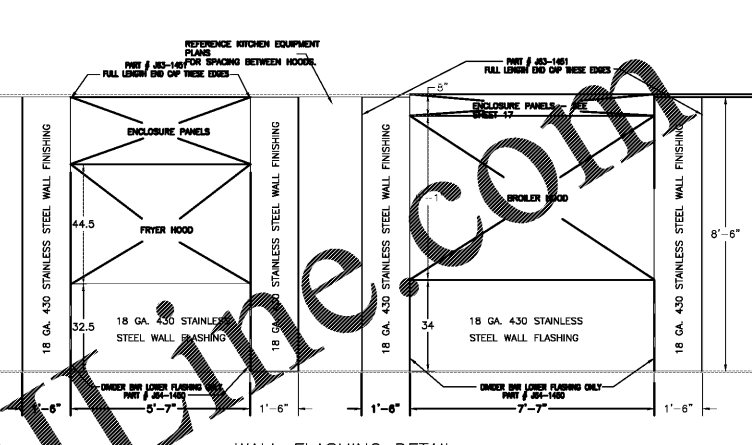
FRYER/HOOD DETAILS
 AMEREX PRE-PIPING DETAILS FRYER HOOD



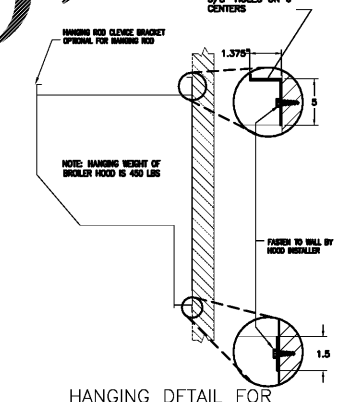
FRYER/HOOD DETAILS
 FRYER HOOD HOOD MOUNTED
 OPTIONAL ANSUL FIRE SYSTEM DETAIL



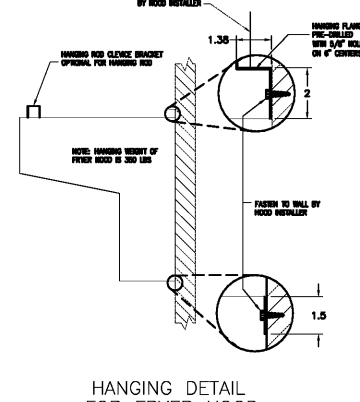
FRYER/HOOD DETAILS
 COMMON DETAILS



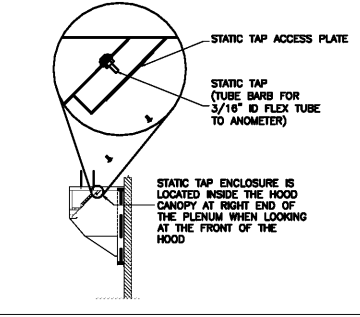
FRYER/HOOD DETAILS
 WALL FLASHING DETAIL



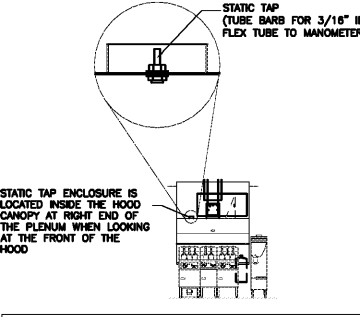
FRYER/HOOD DETAILS
 HANGING DETAIL FOR BROILER/OVEN HOOD



FRYER/HOOD DETAILS
 HANGING DETAIL FOR FRYER HOOD



FRYER/HOOD DETAILS
 HANGING DETAIL FOR BROILER/OVEN HOOD



FRYER/HOOD DETAILS
 HANGING DETAIL FOR FRYER HOOD

PROCEDURE TO CONFIRM HOOD EXHAUST VOLUME

BK ROC Hood / Ex Fan / Fire System / HVAC Control Matrix as of 10-14-09

Action	Ex Fan	Electric Fan to Cooking Equip.	Mech. Gas Valve	HVAC Units	Make up air unit (if applicable)	Comments
Fan start turned on	On	On	On	On	On	Note: HVAC Units must be on before ex fan can come on
Fan stop turned off	Off	Off	On	On	Off	
Fire system discharges	On	Off	Off	Off	Off	
Slipping fan belt	On	Off	On	On	Off	Fan to cooking equip. off via current sensor
Broken fan belt	On	Off	On	On	Off	Fan to cooking equip. off via current sensor
Power outage	Off	Off	On	Off	Off	
HVAC system turned off	Off	Off	On	Off	Off	

Copyright 2019- Drawings, specifications, notes, database, computer files, field data, and reports as instruments of service prepared by the Design of Record, as instruments of services, these items remain the property of the Design of Record, who shall retain all statutory and other reserved rights, including the copyright, thereto. Any use, reproduction or changes to these documents without written consent of NCA Consultants is a violation of federal copyright laws.

DRAWINGS FOR:
 BRUCE DANIELS
 CAROLINA FRANCHISE
 HOLDINGS, LLC
 P.O. BOX 711
 GREENWOOD, SC 29648



AKA ARCHITECTS, P.C.
 74 WOODSTOCK ROAD, ROSWELL, GA, 30075
 TEL: (770) 642-8030 FAX: (770) 642-3755
 EMAIL: arie@akarch.com

SHANE HAMILTON, P.E.
 912 W. MLK BLVD. TAMPA, FL
 SOUTH CAROLINA LIC #35544



PROJECT: B1916
 DATE: 07/22/2019

206 LONGSTREET ST.
 KINGSTREE, SC 29556



HOOD DETAILS
 M-5