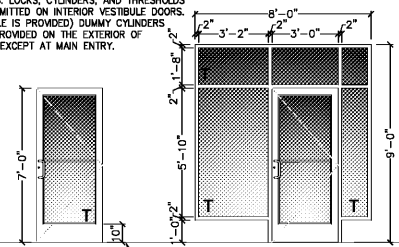


DOOR
#1-SIZE: 3'-0"x7'-0"x1 3/4"x AD x AF
MATERIAL: ALUMINUM / GLASS
FINISH: CLEAR

FRAME
MATERIAL: ALUMINUM
FINISH: CLEAR

HARDWARE
ENTRANCE DOOR HARDWARE SHALL CONSIST OF OFFSET PIVOTS, ADAMS RITE MS1852S DEAD BOLT LOCK, NORTON 1805 SURFACE CLOSERS WITH BACK CHECK, 9" CLASSIC STRAIGHT DOOR PULLS IN POLISHED STAINLESS OR CHROME, AND STANDARD THRESHOLDS. LOCKS, CYLINDERS, AND THRESHOLDS SHALL BE OMITTED ON INTERIOR VESTIBULE DOORS. (IF VESTIBULE IS PROVIDED) DUMMY CYLINDERS SHALL BE PROVIDED ON EXTERIOR OF ALL DOORS EXCEPT AT MAIN ENTRY.



HEAD
REFER TO SHEET A-9

JAMB
REFER TO SHEET A-9

SILL G

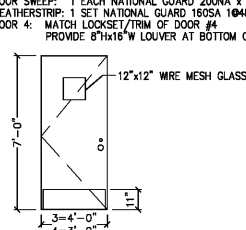
DOOR ①
SCALE: 1/4" = 1'-0"
T = TEMPERED

DOOR FRAME
SCALE: 1/4" = 1'-0"
T = TEMPERED

DOOR
#3-SIZE: 4'-0"x7'-0"x1 3/4" MD x MF
#4-SIZE: 3'-0"x7'-0"x1 3/4" MD x MF
MATERIAL: HOLLOW METAL
FINISH: PAINT - REFER TO SHEET A-2

FRAME
MATERIAL: HOLLOW METAL
FINISH: PAINT - REFER TO SHEET A-2

HARDWARE
DOOR TO RECEIVE:
HINGES: 4 EACH HAGER: B91168 4 1/2" x 4 1/2" USP x NRP
EXIT DEVICE: 1 EACH VON DUPRIN 22E2 x 689 (DOOR #3)
CLOSER: 1 EACH LCN 4111 EDA
VIEWER: 1 EACH ROCKWOOD 622 x 626
KICKPLATES: 1 EACH HAGER 1935 10"x2" LDW 628 (INSTALL W/FLAT HEAD PHILLIPS HEAD SCREWS)
THRESHOLD: 1 EACH NATIONAL GUARD 325 x 48" x AL
DOOR SWEEP: 1 EACH NATIONAL GUARD 200NA x 48"
WEATHERSTRIP: 1 SET NATIONAL GUARD 1605A 1048", 2084"
DOOR #4: MATCH LOCKSET FROM OF DOOR #4
PROVIDE 8"X16" W LOUVER AT BOTTOM OF DOOR



HEAD A

JAMB B

SILL C

DOOR ③④
SCALE: 1/4" = 1'-0"

DOOR FRAME
SCALE: 1/4" = 1'-0"

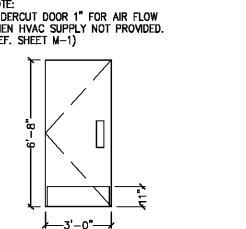
DOOR
#5 & #7-SIZE: 3'-0"x6'-8"x1 3/4" WD x MF
MATERIAL: SOLID CORE HPL
FINISH: REFERENCE ID SHEETS

FRAME
MATERIAL: ALUMINUM
FINISH: REFERENCE ID SHEETS

HARDWARE
EACH DOOR TO RECEIVE:
HINGES: 3 EACH HAGER: B91279 4 1/2" x 4 1/2" x 652
LOOKSET: 1 EACH FALCON: D271 x 626
CLOSER: 1 EACH LCN 4111 EDA
PUSH PLATE: 1 EACH HAGER 305 4x16 628
PULL PLATE: 1 EACH HAGER 133E 4x16 628
FLOOR STOP: 1 EACH HAGER 241F x US260
KICKPLATES: 2 EACH HAGER 1935 10"x2" LDW 628 (INSTALL W/FLAT HEAD PHILLIPS HEAD SCREWS)
SILENCERS: 3 EACH HAGER 307D RBR

REMARKS
SIGN PACKAGE: 1 "LADIES", 1 "GENTLEMEN" AND CORRESPONDING SIGNAGE IN GRADE TWO BRILLE PER ADA REQUIREMENTS. SIGNS FURNISHED BY DECOR SUPPLIER. SIGNS INSTALLED BY GENERAL CONTRACTOR PER ADA REQUIREMENTS.
AS AN OPTION IN LIEU OF SOLID CORE DOORS AND HOLLOW METAL FRAMES, PROVIDE MARLITE HPL DOORS WITH ALUMINUM FRAMES (REF. ID SHEETS FOR COLOR).

***OPTIONAL SANITGRASP #5G-101



HEAD D

JAMB E

SILL F

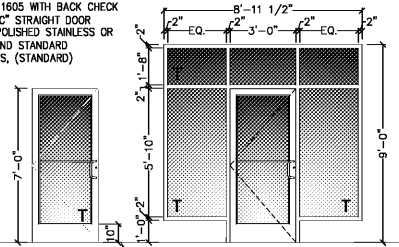
DOOR ⑤⑥
SCALE: 1/4" = 1'-0"

DOOR FRAME
SCALE: 1/4" = 1'-0"

DOOR
#2-SIZE: 3'-0"x7'-0"x1 3/4" AD x AF
MATERIAL: ALUMINUM / GLASS
FINISH: CLEAR

FRAME
MATERIAL: ALUMINUM
FINISH: CLEAR

HARDWARE
HINGES, OFFSET PIVOTS
LOOKSET: ADAMS RITE DEAD BOLT, MS 1852S
FLUSH BOLTS, 1 PAIR
SURFACE CLOSER:
NORTON 1805 WITH BACK CHECK
9" CLASSIC STRAIGHT DOOR PULLS IN POLISHED STAINLESS OR CHROME, AND STANDARD THRESHOLDS. (STANDARD)



HEAD
REFER TO SHEET A-9

JAMB
REFER TO SHEET A-9

SILL G

DOOR ②
SCALE: 1/4" = 1'-0"
T = TEMPERED

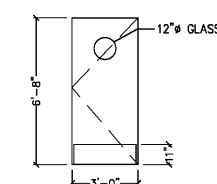
DOOR FRAME
SCALE: 1/4" = 1'-0"
T = TEMPERED

DOOR
#6-SIZE: 3'-0"x6'-8"x1 3/4" MD x AF
MATERIAL: SOLID CORE HPL
FINISH: REFERENCE ID SHEETS.

FRAME
MATERIAL: ALUMINUM
FINISH: REFERENCE ID SHEETS.

HARDWARE
EACH DOOR TO RECEIVE:
HINGES: 3 EACH HAGER: B91279 4 1/2" x 4 1/2" x 652
LOOKSET: 1 EACH SCHLAGE, AL53PD SAT x 626
CLOSER: 1 EACH LCN 4111 EDA
FLOOR STOP: 1 EACH HAGER 241F x US260
KICKPLATES: 2 EACH HAGER 1935 10"x2" LDW 628 (INSTALL W/FLAT HEAD PHILLIPS HEAD SCREWS)
SILENCERS: 3 EACH HAGER 307D RBR
DOOR VIEWER: 1 EACH ROCKWOOD 622 x 626

REMARKS
SIGN PACKAGE: 1 "KITCHEN" AND CORRESPONDING SIGNAGE IN GRADE TWO BRILLE PER ADA REQUIREMENTS. SIGNS FURNISHED BY DECOR SUPPLIER. SIGNS INSTALLED BY GENERAL CONTRACTOR PER ADA REQUIREMENTS.
AS AN OPTION IN LIEU OF SOLID CORE DOORS AND HOLLOW METAL FRAMES, PROVIDE MARLITE HPL DOORS WITH ALUMINUM FRAMES (REF. ID SHEETS FOR COLOR).



HEAD D

JAMB E

SILL F

DOOR ⑥
SCALE: 1/4" = 1'-0"

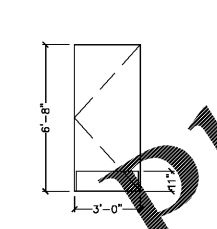
DOOR FRAME
SCALE: 1/4" = 1'-0"

DOOR
#8-SIZE: 3'-0"x6'-8"
MATERIAL: SOLID CORE HPL/GLASS
FINISH: REFERENCE ID SHEETS.

FRAME
MATERIAL: ALUMINUM
FINISH: REFERENCE ID SHEETS.

HARDWARE
DOOR TO RECEIVE:
HINGES: 3 EACH HAGER: B91279 4 1/2" x 4 1/2" x 652
LOOKSET: 1 EACH SCHLAGE, AL53PD SAT x 626
FLOOR STOP: 1 EACH HAGER 241F x US260
KICKPLATES: 2 EACH HAGER 1935 10"x2" LDW 628 (INSTALL W/FLAT HEAD PHILLIPS HEAD SCREWS)
SILENCERS: 3 EACH HAGER 307D RBR

REMARKS
AS AN OPTION, IN LIEU OF SOLID CORE DOORS AND HOLLOW METAL FRAMES, PROVIDE MARLITE HPL DOORS WITH ALUMINUM FRAMES (REF. ID SHEETS FOR COLOR).



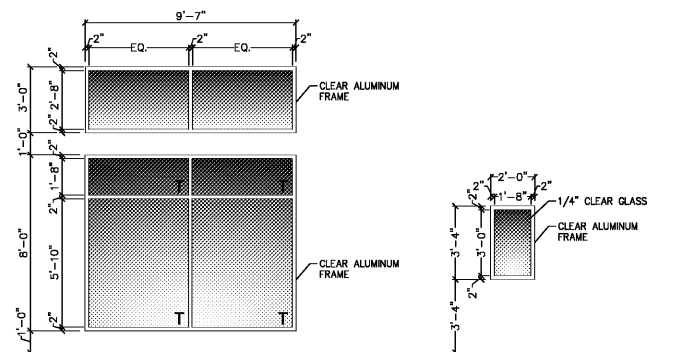
HEAD D

JAMB E

SILL F

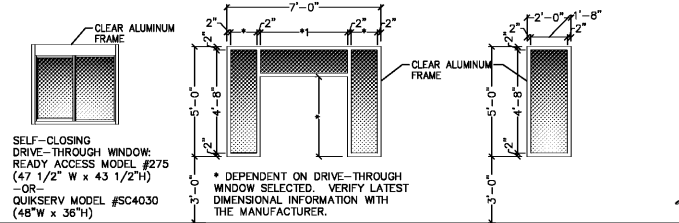
DOOR ⑧
SCALE: 1/4" = 1'-0"

DOOR FRAME
SCALE: 1/4" = 1'-0"



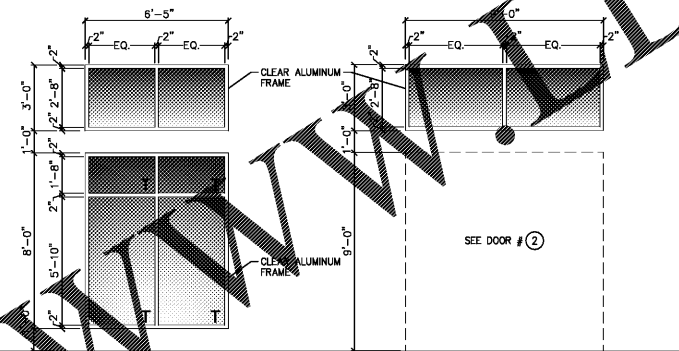
WINDOW ①
SCALE: 1/4" = 1'-0"

WINDOW ②
SCALE: 1/4" = 1'-0"



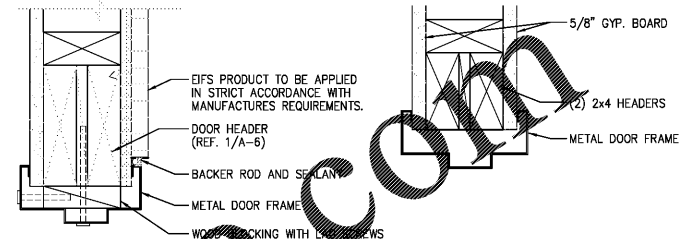
WINDOW ③
SCALE: 1/4" = 1'-0"

WINDOW ④
SCALE: 1/4" = 1'-0"



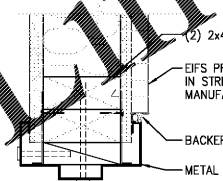
WINDOW ⑤
SCALE: 1/4" = 1'-0"

WINDOW ⑥
SCALE: 1/4" = 1'-0"

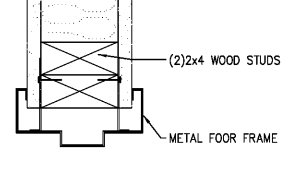


A HEADER DETAIL
SCALE: 3" = 1'-0"

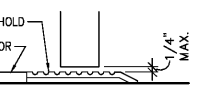
D HEADER DETAIL
SCALE: 3" = 1'-0"



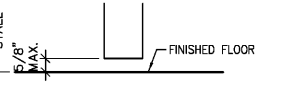
B JAMB DETAIL
SCALE: 3" = 1'-0"



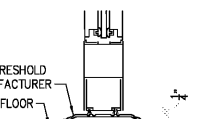
E JAMB DETAIL
SCALE: 3" = 1'-0"



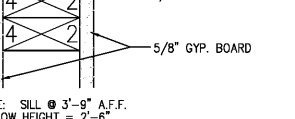
C THRESHOLD DETAIL
SCALE: 3" = 1'-0"



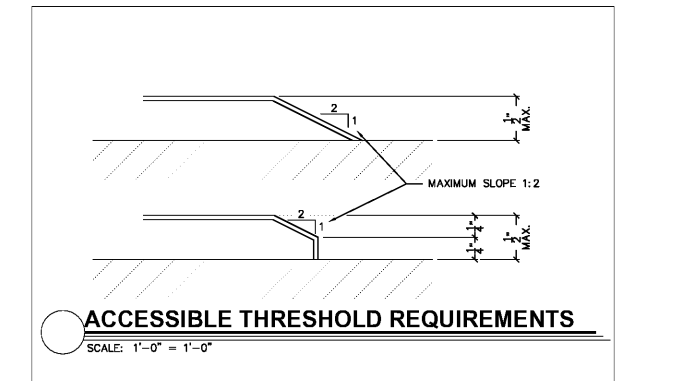
F THRESHOLD DETAIL
SCALE: 3" = 1'-0"



G THRESHOLD DETAIL
SCALE: 3" = 1'-0"



H OFFICE SILL DETAIL
SCALE: 3" = 1'-0"



EXIT DOORS IN PUBLIC AREAS DO NOT REQUIRE EMERGENCY EGRESS DEVICES PER IBC 1010.1.9.3 EX#2:
A READILY VISIBLE DURABLE SIGN IS POSTED ON THE EGRESS SIDE ON OR ADJACENT TO THE DOOR STATING:
"THIS DOOR TO REMAIN UNLOCKED WHEN BUILDING IS OCCUPIED"
THE SIGN SHALL BE IN LETTERS 1 INCH (25 MM) HIGH ON A CONTRASTING BACK-GROUND

Specified Products and Approved Equals			
Hinges - Provide features, functions, size and finish as shown in hardware sets.			
HAGER	BD1279	BD1166	253
MCKINNEY	TA2714	1A43766	
BOMMER	BB5000	BB5004	
Locks - Provide features, functions and finish as shown in hardware sets.			
FALCON - DEADLOCK	D871		NO SUBSTITUTIONS
SCHLAGE	AL53PD	AL405	
YALE	AUS307LN	AUS302LN	
FALCON	B511D	B301D	
Exit Device - Provide features, functions and finish as shown in hardware sets.			
VON DUPRIN	22 EO		
YALE	2100 EO		
SARGENT	3625 EO		
Closers - Provide features, functions and finish as shown in hardware sets.			
LCN	1461	4115 H-CUSH	
YALE	3301	4429T / 4421T	
DORMA	9616	8916 D91 / 8956 D91	
Push/Pull, KP, Stops, Etc. - Provide features, functions, size and finish as shown in hardware sets.			
HAGER	KICKPLT 1935	FULL PLT H33E	PUSH PLT 305
ROCKWOOD	R1050 B3E	BF106 X 70C	70C
TRAMCO	K0050	1017.3x2 FROJ	1001-3
			1211
			1270WV
			976U
Weatherstripping, Thresholds, Etc. - provide features, functions, size and finish as shown in hardware sets.			
NATIONAL GUARD	THRESHOLD 325A	SWEEP 200NA	WEATHERSTRIP 1605A
FEMKO	229A	315CN	303AS
ZERO	1675A	35A	99A

Order Plans @

B1916

DATE	RELEASE
08.26.19	FOR CONSTRUCTION

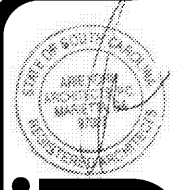
CHECKED BY: AK
DRAWN BY: CY

NOTE: THESE DRAWINGS ARE THE PROPERTY OF ARIE KOHN ARCHITECTS, P.C. AND SHALL NOT BE USED, REPRODUCED, AND/OR MODIFIED WITHOUT WRITTEN CONSENT FROM ARIE KOHN ARCHITECTS, P.C.

DRAWINGS FOR:
BRUCE DANIELS
CAROLINA RE HOLDINGS, LLC
P.O. BOX 771
GREENWOOD, SC 29649
646-462-5481



ARIIE KOHN ARCHITECTS, PC
74 WOODSTOCK ROAD ROSWELL, GA 30075
TEL (770) 642-9630 FAX (770) 642-3785
EMAIL: arie@akohmarch.com



PROJECT: B1916
DATE: 07/22/2019

206 LONGSTREET, ST. KINGSTREE, SC 29556
BURGER KING RESTAURANT
DOOR AND WINDOW SCHEDULE

A-8.0