

DATE	RELEASE
08.26.19	FOR CONSTRUCTION

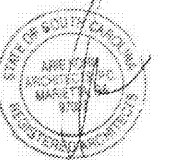
CHECKED BY: AK
 DRAWN BY: CY

NOTE:
 THESE DRAWINGS ARE THE PROPERTY OF ARIE KOHN ARCHITECTS, P.C. AND SHALL NOT BE USED, REPRODUCED, AND/OR MODIFIED WITHOUT WRITTEN CONSENT FROM ARIE KOHN ARCHITECTS, P.C.

DRAWINGS FOR:
 BRUCE DANIELS
 CAROLINA RE HOLDINGS, LLC
 P.O. BOX 711
 GREENWOOD, SC 29649
 846-462-5481



ARIE KOHN ARCHITECTS, P.C.
 74 WOODSTOCK ROAD ROSWELL, GA 30075
 TEL (770) 642-9630 FAX (770) 642-3785
 EMAIL: arie@akohmarch.com



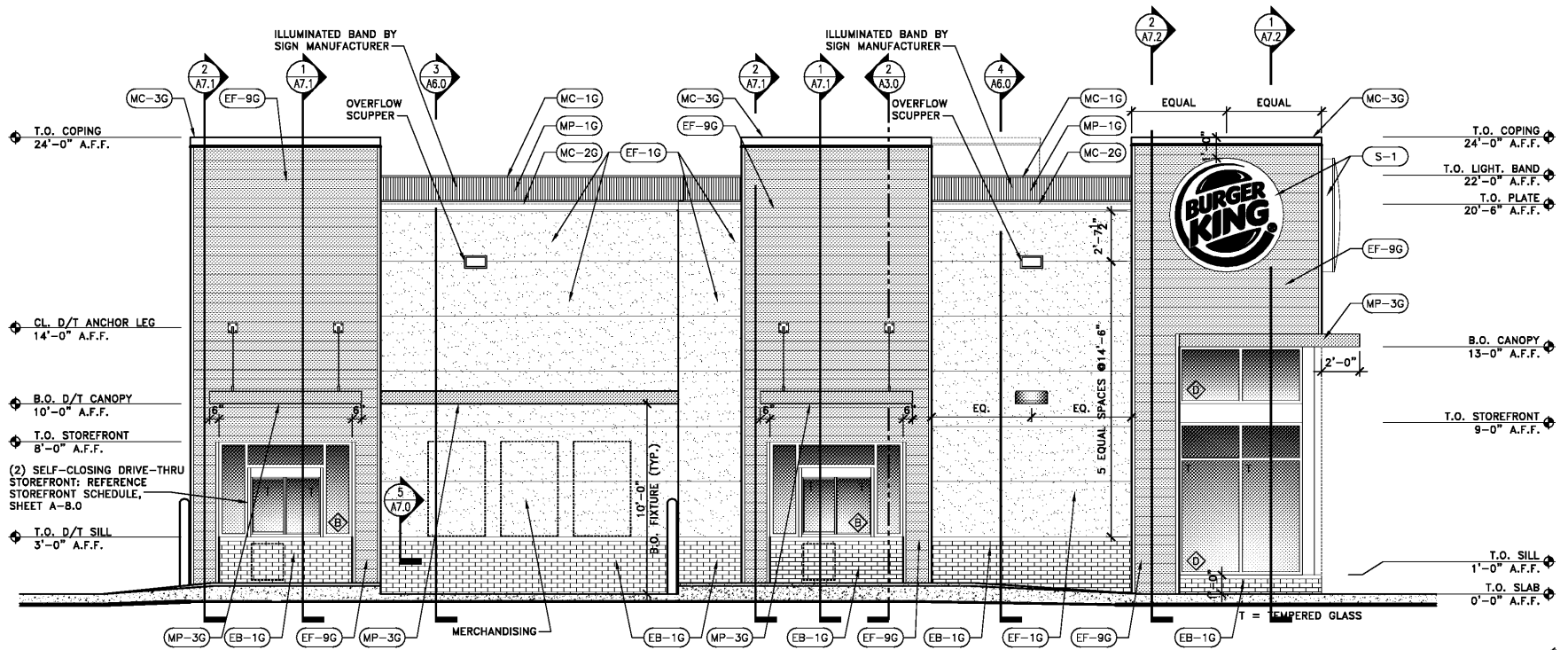
PROJECT: B1916
 DATE: 07/22/2019

206 LONGSTREET ST.
 KINGSTREE, SC 29556

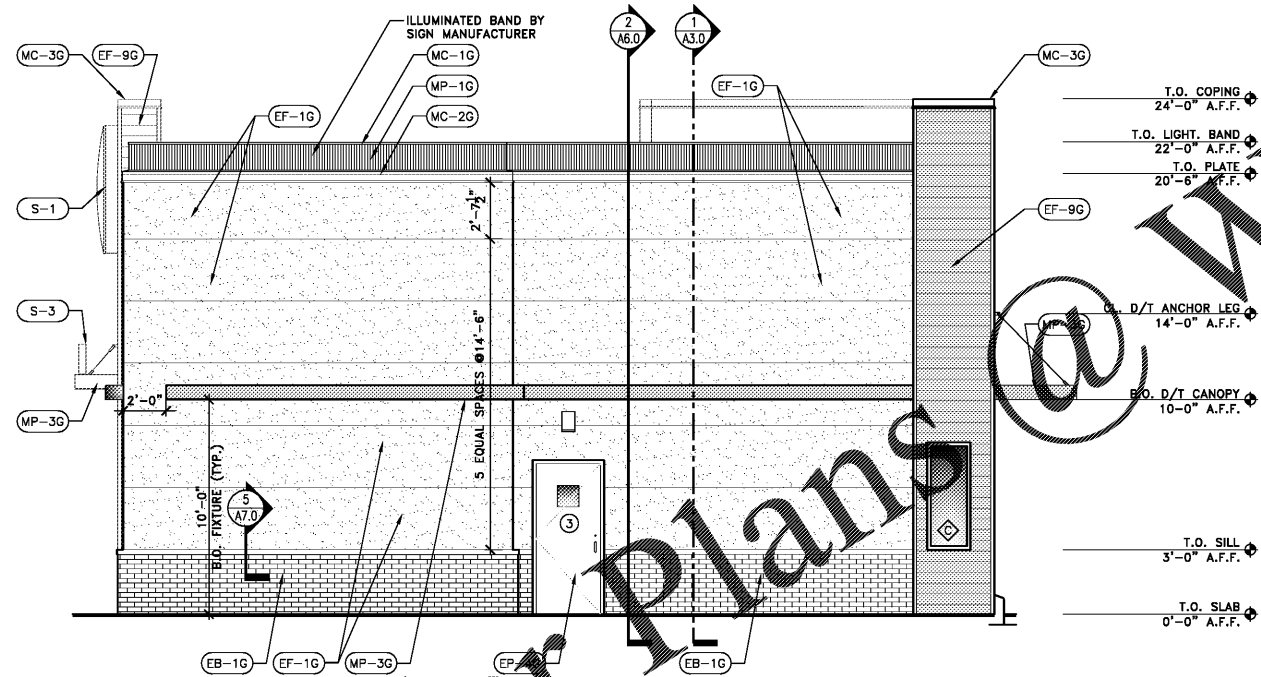
BURGER KING RESTAURANT

EXTERIOR ELEVATIONS

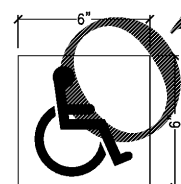
A-2.1



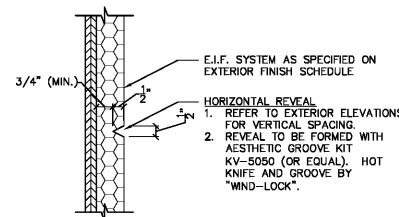
1 DRIVE-THRU ELEVATION (LEFT SIDE)
 SCALE: 1/4" = 1'-0"



2 REAR ELEVATION
 SCALE: 1/4" = 1'-0"



ADA SYMBOL OF ACCESSIBILITY (ISA) DECAL TO BE LOCATED ON STOREFRONT GLASS ADJACENT TO ALL ACCESSIBLE DOORS.



4 REVEAL DETAIL 'A'
 SCALE: 3" = 1'-0"

STOREFRONT NOTE:

ALL STOREFRONT SYSTEM TO BE CLEAR ANODIZED ALUMINUM FINISH, INCLUDING FLASHING AND COVERS AS REQUIRED.
 TYPE VISION:
 OVERALL THICKNESS: 1" INSULATED GLASS
 OUTBOARD LITE: 1/4" VEI-2M LOW-E #2 SURFACE TEMPERED
 AIR SPACE: 1/2" WITH BLACK SILICONE SEAL
 INBOARD LITE: 1/4" CLEAR GLASS

U-FACTOR:
 STOREFRONT = 0.60
 ENTRANCE DOOR = 0.90
 SHGC = 0.25

NOTE TO CANOPY PROVIDER:

IT IS IMPORTANT TO INSURE THAT THE ACTUAL DIMENSIONS OF THE FLAT CANOPIES SHOULD CONSIDER THE THICKNESS OF ADJACENT SURFACES AFTER FIELD MEASUREMENT PRIOR TO CONSTRUCTION. FOR SIZES OF CANOPY SEE A-7.3

E.I.F.S. SYSTEM SPECIFICATIONS

DESCRIPTION:

WATER-DRAINAGE & EXTERIOR INSULATION AND FINISH SYSTEM (E.I.F.S.) APPLIED OVER WATER-RESISTIVE COATING OVER SHEATHING. SYSTEM TO BE 1-1/2" THICK, U.N.O. OR AS REQUIRED TO MAINTAIN FLUSH/CONTINUOUS SURFACE.
 CLASS PB E.I.F.S.: WITH PHYSICAL PROPERTIES, DRAINAGE, AND STRUCTURAL PERFORMANCE THAT COMPLY WITH ICC-ES AC235

SYSTEM(S):

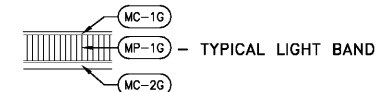
- "STO-THERM CLASSIC NEXT E.I.F.S. FINE SAND FINISH" BY STO CORPORATION, PAINTED OR PRE-FINISHED, SEE SHEET A-2.2. G.C. TO PROVIDE & INSTALL PER MANUFACTURER'S SPECIFICATIONS.

NOTE: USE ULTRA HIGH IMPACT SYSTEM FROM FLOOR LEVEL TO 6'-0" A.F.F.

EXTERIOR FINISH LEGEND & NOTES:

- (EB-10) BRICK FINISH - FULL BRICK / BRICK SILL HEIGHT AND BELOW - COLOR: OLDE HILLSBORO BY EVOLUTION BRICK.
- (EF-10) NEW E.I.F.S. WITH SCORE REVEAL ABOVE BRICK, PAINTED "TANNERS TAUPE" (LIGHT TAN)
- (EF-90) EXTERIOR FINISH FIBER CEMENT TOWER AND IMAGE ELEMENTS

TYPICAL METAL BAND (BY MANUFACTURER):



COPING CAP COLORS:

ABOVE (EF-10) = (MC-10) W.P. HICKMAN SYSTEMS - A-30 "SILVER SMITH")
 ABOVE (EF-90) = (MC-30)

- CANOPIES (MP-30) - CLEAR ANODIZED (SILVER)
- BOLLARDS (EP-30) - "AMAZING" MP #04YR 11/537 (RED)
- HANDRAILS, REAR DOOR, FRAME, & EXTERIOR LADDER - (EP-40) - PAINTED "MONTEREY CLIFFS" (DARK TAN)
- DOWNSPOUTS/VERTICAL TRIM - MATCH ADJACENT SURFACES (EP-40) (EP-20) - PAINTED
- (S-1) BACKLITTED BURGER KING WALL LOGO SIGN
- (S-3) BURGER KING FREE STANDING LETTER SIGN