

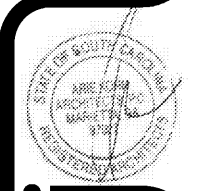
DATE	RELEASE
08.26.19	FOR CONSTRUCTION

CHECKED BY: AK
DRAWN BY: CY

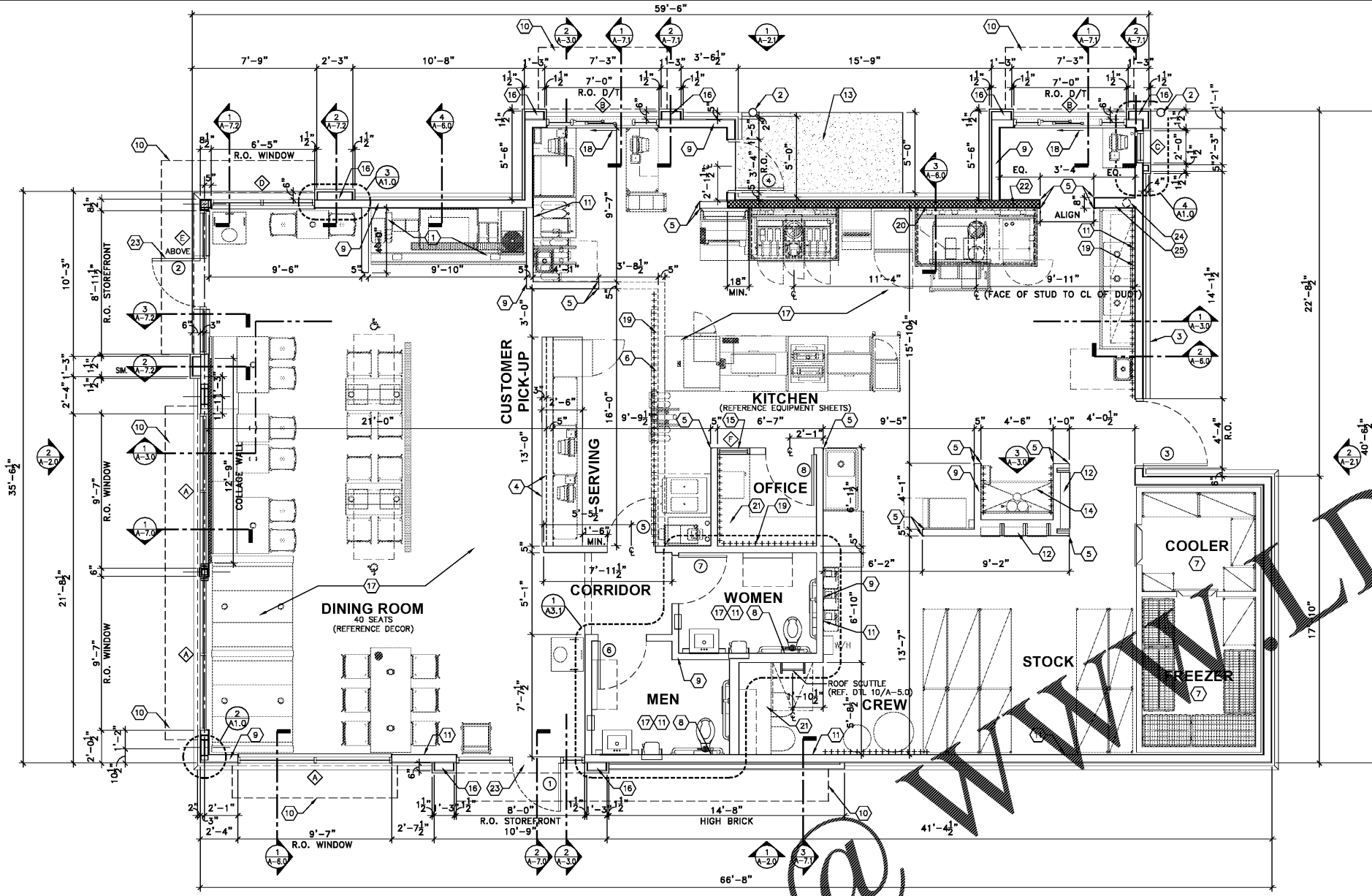
NOTE: THESE DRAWINGS ARE THE PROPERTY OF ARE KOHN ARCHITECTS, P.C. AND SHALL NOT BE USED, REPRODUCED, COPIED, OR MODIFIED WITHOUT WRITTEN CONSENT FROM ARE KOHN ARCHITECTS, P.C.

DRAWINGS FOR:
BRUCE DANIELS HOLDINGS, LLC
CAROLINA RE HOLDINGS, LLC
P.O. BOX 711
GREENWOOD, SC 29649
646-462-5481

ARE KOHN ARCHITECTS, P.C.
74 WOODSTOCK ROAD ROSWELL, GA 30075
TEL (770) 642-9030 FAX (770) 642-3785
EMAIL: are@kohnarch.com



PROJECT: B1916
DATE: 07/27/2019
BURGER KING RESTAURANT
206 LONGSTREET ST.
KINGSTREE, SC 29556
FLOOR PLAN AND DETAILS



NOTE:
DIMENSIONS BETWEEN WALLS IN RESTROOMS ARE FROM WALL FINISH TO WALL FINISH AND CANNOT BE REDUCED. G.C. TO PAY CAREFUL ATTENTION TO MAINTAIN THESE CRITICAL DIMENSIONS

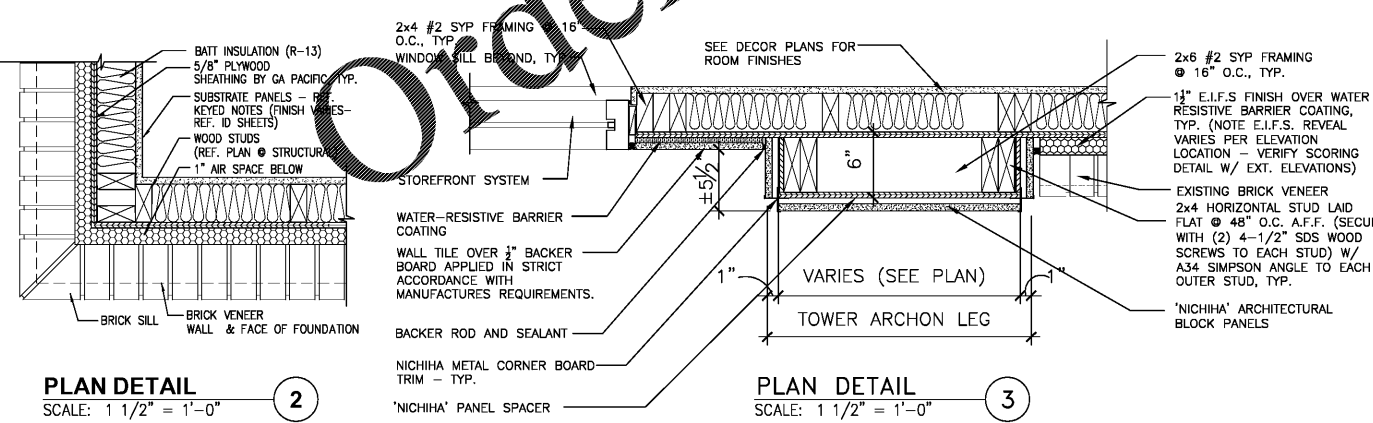
FRAMING WALL LEGEND
(SEE GENERAL NOTE "F")

- USG 5/8" DUROCK (BOTH SIDES) ON 560S162-43 METAL STUD FRAMING @ 16" O.C. WITH EXTERIOR PLYWOOD SHEATHING ON EXTERIOR DUROCK LAYER @ EXTERIOR WALL ONLY. SEE WALL SECTION 3/A-6.0. SEE NOTE #22 THIS SHEET.

- KEYED NOTES:**
- SELF-SERVE DRINKS AND CONDIMENTS STAND, REFER TO SHEET EQ-1.
 - STEEL BOLLARD - REFER TO SHEET 5/0-1.
 - ELECTRIC SERVICE CENTER TO ELECTRICAL DRAWINGS.
 - SERVICE COUNTER PARTITION BY G.C. REFER TO DETAILS ON ELECTRICAL SHEETS FOR ADDITIONAL INFORMATION. COORDINATE COUNTER TOP WITH INSTALLATION RESPONSIBILITIES WITH THE DECOR SUPPLIER. MAXIMUM COUNTER HEIGHT = 34" A.F.F. (SEE SECTIONS 4/A-4.1 REFER TO DETAIL 6/A-4.1.
 - MENU BOARD/BULKHEAD ABOVE. REFER TO DETAIL 7/A-4.1
 - IN SERVICE AREA - IN BOX WITH FLOOR ON CONCRETE SLAB. VERIFY SIZE WITH MANUFACTURER.
 - PROVIDE ADDITIONAL BLOCKING IN WALLS BEHIND PLUMBING FIXTURES FOR SUPPORT OF WATER LINES (TYPICAL).
 - 2x6 WOOD STUD FRAMING @ 16" O.C. AT EXTERIOR WALLS; 2x4 WOOD STUD FRAMING AT INTERIOR WALLS.
 - LINE OF AWNING/CANOPY ABOVE.
 - SUBSTRATE PANELS:
KITCHEN - CREW - RESTROOMS
5/8" USG "DUROCK" PANELS AT FINISH FLOOR TO 36" A.F.F.
5/8" WATER RESISTANT GYPSUM BOARD FROM 36" A.F.F. TO 6" ABOVE FINISHED CEILING HEIGHT.
PROVIDE ALTERNATE BID OF 5/8" USG "FIBEROCK" PANELS IN LIEU OF DUROCK.
 - DINING ROOM - CORRIDOR
5/8" TYPE USG "SHEETROCK" TYPE "X" GYPSUM WALL BOARD.
FINISH: CORONADO PAINT - LIGHT ORANGE PEEL APPLIED WITH CORONADO AIR ASSIST TIP (Z-22KD) OR EQUAL.
 - ELECTRICAL PANELS (COORDINATE WITH ELECTRICAL SHEETS)
OPTION #1:
RECESS ELECTRICAL CONTACTOR PANEL AND PANELS "A", "B" AND "M" IN FURRED OUT WALL G.C. TO VERIFY PANEL SIZES PRIOR TO FURR-OUT TO INSURE ADEQUATE SPACE.
OPTION #2:
HILL PHOENIX INTEGRATED WALL UNIT INCLUDES PANELS "A", "B", "M" AND MASTER CONTACTOR PANEL IN ONE CABINET. UNIT TO BE SURFACE MOUNTED ON A 4" HIGH CONCRETE CURB. REFERENCE ELECTRICAL SHEETS FOR ADDITIONAL INFORMATION.
 - SIDEWALK, SLOPE AWAY FROM BUILDING 1% MIN. SEE CIVIL PLANS.
 - CAN WASH - DUROCK SUBSTRATE ON ALL THREE SIDES, FLOOR TO CEILING.
 - OFFICE WINDOW TO BE 2'-0" WIDE BY 3'-4" HIGH, SILL @ 40" AFF. - REFERENCE SHEET A-8.0.
 - INSTALL ADDITIONAL 4" CONC. FILL AT ALL IMAGE ELEMENT LOCATIONS. REFERENCE FOUNDATION PLAN.
 - TILE FLOOR (REFERENCE SPECIFICATIONS ON DECOR DRAWINGS).
 - SELF-CLOSING DRIVE-THROUGH SLIDING WINDOW.
 - +++++ INDICATES 5/8" PLYWOOD BACKING ON WALLS FOR EQUIPMENT AS INDICATED ON PLAN OR SHELF SUPPORT FROM 48" A.F.F. TO 96" A.F.F. BEHIND 3-COMPARTMENT SINK AND PREP SINK AND ON BULKHEAD AT MENU BOARD WALL FROM 6'-8" A.F.F. TO BOTTOM OF ROOF TRUSSES.
 - USG 5/8" DUROCK (BOTH SIDES) ON 5 1/2" x 18 GAUGE CEE STUD FRAMING AT 16" O.C. BEHIND HOODS. EXTEND AS SHOWN (18" BEYOND EACH END OF HOOD, V.I.F.).
 - COUNTER TOP - REFERENCE DETAIL 5/A-4.1
 - CARRY THE METAL STUD WALL 5/8" DUROCK ON EACH SIDE TO 11'-0" A.F.F. (NO PLYWOOD @ BACK OF WALL).
 - BUILDING ENTRANCE DOORS ARE ACCESSIBLE. SEE ACCESSIBLE ROUTE TO ENTRANCE DOORS PER CIVIL DRAWINGS.
 - 6" DOWNSPOUT IN WALL - COORDINATE WITH CIVIL DRAWINGS THE DISCHARGE OF WATER.
 - FURR-OUT WALL WITH 2X LAID PERPENDICULAR TO WALL TO PROVIDE SUFFICIENT WIDTH TO ACCOMMODATE 6" DRAIN.

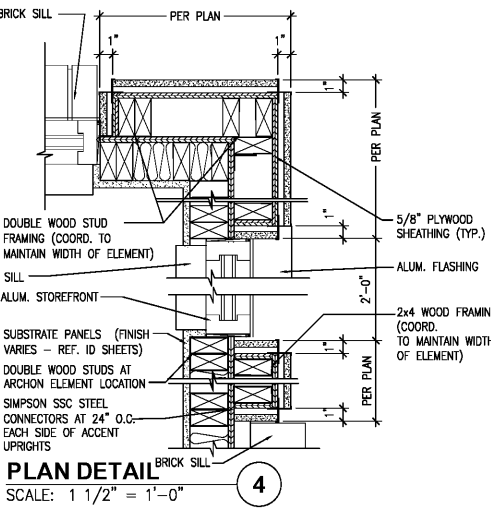
1 FLOOR PLAN
SCALE: 1/4" = 1'-0"

- GENERAL NOTES:**
- EXTERIOR DIMENSIONS ARE TO FACE OF SHEATHING. INTERIOR DIMENSIONS ARE TO FINISH.
 - OVERALL DIMENSIONS TO EXTERIOR WALLS ARE THE SAME AS TO THE OUTSIDE FACE OF FOUNDATION WALL BELOW.
 - ALL ANGLED WALLS ARE AT 90° UNLESS NOTED OTHERWISE.
 - FIRE EXTINGUISHERS SHALL COMPLY WITH APPLICABLE BUILDING CODES AND LOCAL RESTRICTIONS. (1) 2A:10BC ADJACENT OR NEAR DOOR #1 OR #2; (1) 2A:10BC UNIT AND (1) 'K' CLASS UNIT IN KITCHEN AREA, BOTH LOCATED WITHIN 30' OF COOKING EQUIPMENT IN THE PATH OF EGRESS.
 - ELEVATION OF DRIVE-THROUGH LANE 2" (MAXIMUM) BELOW FINISH FLOOR ELEVATION. DRIVE-THROUGH LANE AT SAME ELEVATION AS FINISH FLOOR IS PREFERRED.
 - ALL EXTERIOR WALLS TO BE 2x6 WOOD STUDS, UNLESS OTHERWISE NOTED (SEE STRUCTURAL PLANS FOR SPECS.) ALL INTERIOR WALLS TO BE 2x4 WOOD STUDS @ 16" O.C.



PLAN DETAIL 2
SCALE: 1 1/2" = 1'-0"

PLAN DETAIL 3
SCALE: 1 1/2" = 1'-0"



PLAN DETAIL 4
SCALE: 1 1/2" = 1'-0"

ROOM FINISH SCHEDULE				
NOTE: ALL INTERIOR FINISHES TO MEET CLASS "C" FLAME SPREAD RATING				
ROOM	FLOOR	BASE	WALLS	REMARKS
DINING ROOM	FLOOR TILE	FLOOR TILE CONE BASE & RECD TRIM PIECES	MARLITE AND WALLCOVERING ON GYPSUM WALL BOARD #1	WALL COVERING BY G.C. ABOVE CHAIR RAIL
QUEUE-LINE	FLOOR TILE	FLOOR TILE CONE BASE & RECD TRIM PIECES	MARLITE AND WALLCOVERING ON GYPSUM WALL BOARD #1	WALL COVERING BY G.C. ABOVE CHAIR RAIL (VERIFY WITH DECOR)
SERVICE AREA	QUARRY TILE	QUARRY TILE CONE BASE & RECD TRIM PIECES	CERAMIC TILE ON WALL BOARD #1	(VERIFY FINISHES WITH DECOR DRAWINGS)
KITCHEN	QUARRY TILE	QUARRY TILE CONE BASE & RECD TRIM PIECES	F.R.P. ON GYPSUM WALL BOARD #3	(SAME ON BOTH BURGER KING AND PHILLY PRETZEL AREAS)
OFFICE	QUARRY TILE	QUARRY TILE CONE BASE & RECD TRIM PIECES	F.R.P. ON GYPSUM WALL BOARD #2	
UTILITY/STORAGE	QUARRY TILE	QUARRY TILE CONE BASE & RECD TRIM PIECES	F.R.P. ON GYPSUM WALL BOARD #2	
RESTROOMS	FLOOR TILE	FLOOR TILE CONE BASE & RECD TRIM PIECES	CERAMIC TILE ON GYPSUM WALL BOARD #3	(VERIFY FINISHES WITH DECOR DRAWINGS/OWNER)
CORRIDOR	FLOOR TILE	FLOOR TILE CONE BASE & RECD TRIM PIECES	MARLITE AND WALLCOVERING ON GYPSUM WALL BOARD #1	WALL COVERING BY G.C. ABOVE CHAIR RAIL (VERIFY WITH DECOR/OWNER)
MOP SINK	QUARRY TILE	QUARRY TILE CONE BASE & RECD TRIM PIECES	5" HIGH 5/8" PLYWOOD ON FULL HTG 5/8" DUROCK w/ F.R.P. ABOVE 5'	

INTERIOR MATERIAL FINISHES LIST	
NOTE: G.C. TO VERIFY ALL INTERIOR FINISHES AND INSTALLATION PRACTICES WITH DECOR DRAWINGS & OWNER	
GYPSUM BOARD #1: 5/8" TYPE "X" GYPSUM WALL BOARD.	WALL PANELING: (KITCHEN (ALL AREAS), UTILITY, OFFICE, STOR.) F.R.P. - MARLITE BRAND F.R.P. BY MARLITE ARCHITECTURAL PRODUCTS. COLOR: WHITE
GYPSUM BOARD #2: 5/8" WATER RESISTANT TYPE "X" GYPSUM WALL BOARD.	GB GLASSBORO-P F.R.P. PANEL BY KEMULTE. COLOR: WHITE
GYPSUM BOARD #3: 1/2" "DUROCK" TYPE BACKING BOARD UP TO 3'-0" HIGH AS MANUFACTURED BY U.S. GYPSUM COMPANY.	GB STRUCTOGLAS F.R.P. BY SEQUENTIA, INC. COLOR: WHITE
7/16" THICK "WONDER BOARD" UP TO 3'-0" HIGH AS MANUFACTURED BY O.E.I. CORPORATION.	
1/2" WATER RESISTANT TYPE "X" GYPSUM WALL BOARD FROM 3'-0" HIGH TO CEILING HEIGHT.	