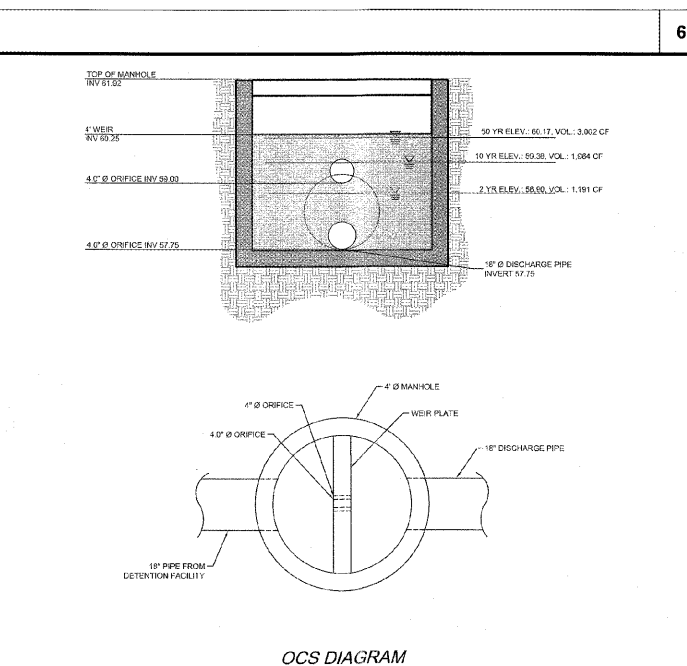
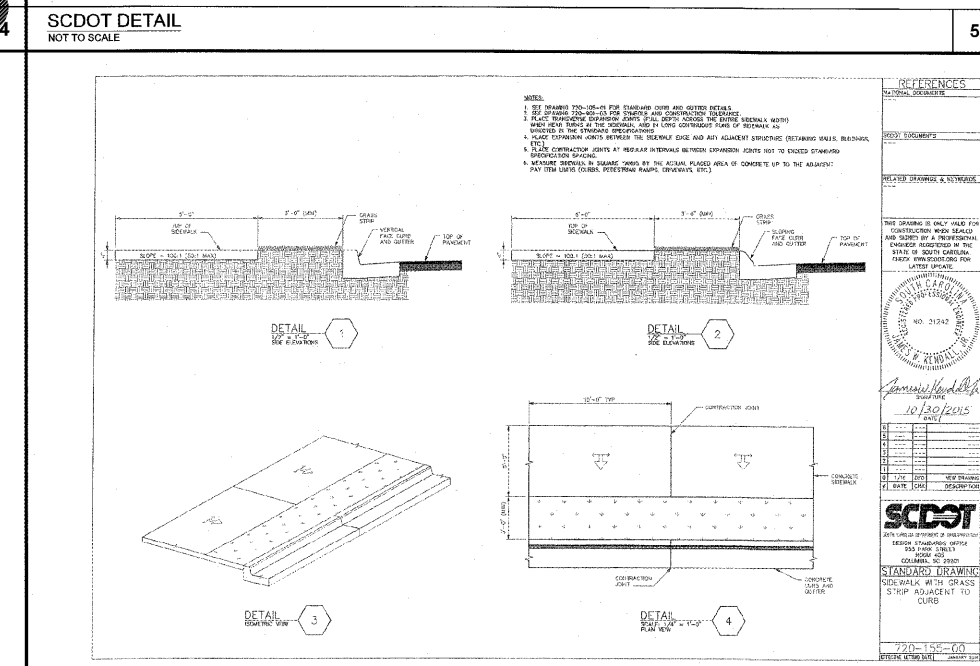
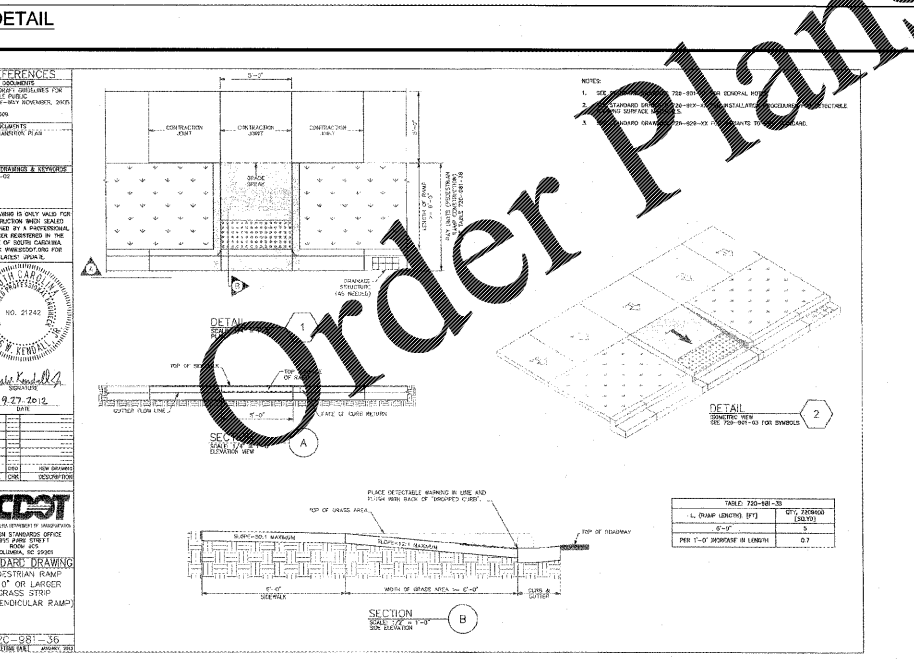
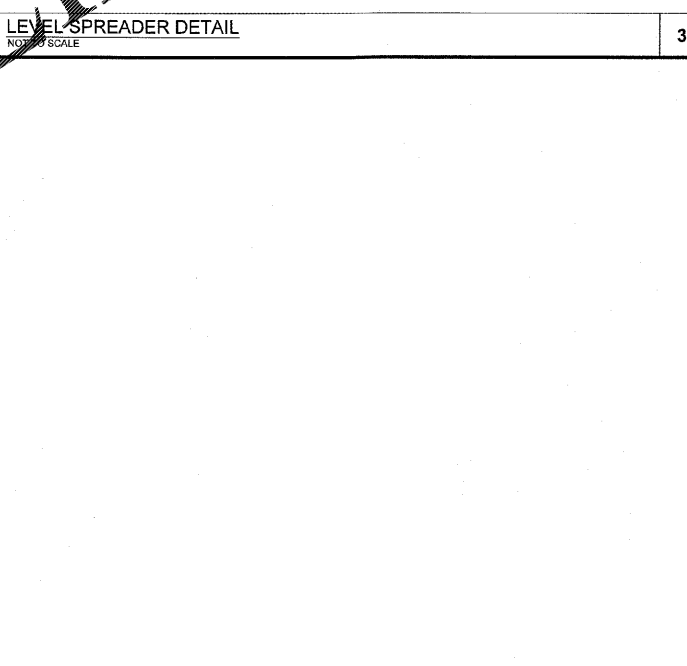
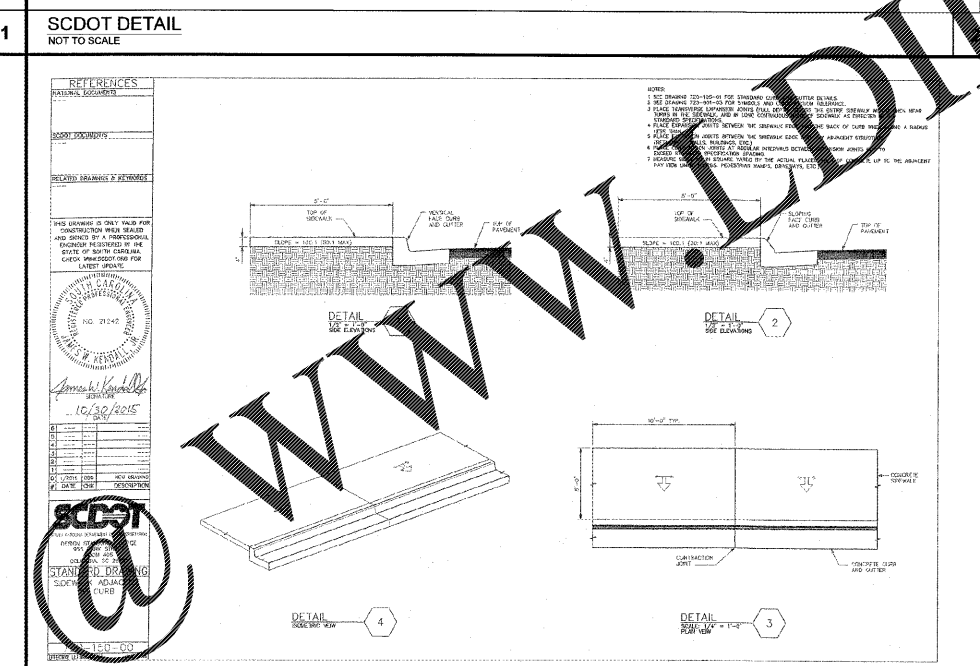
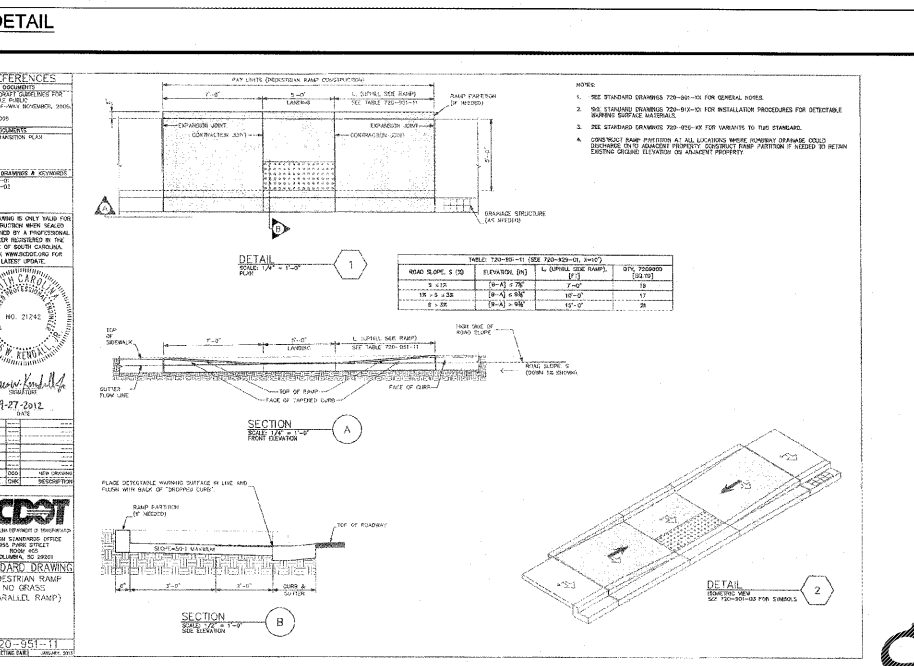
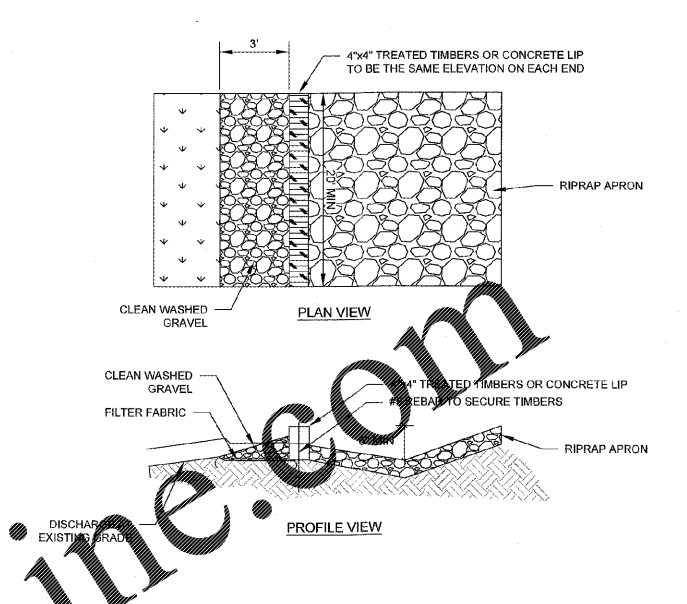
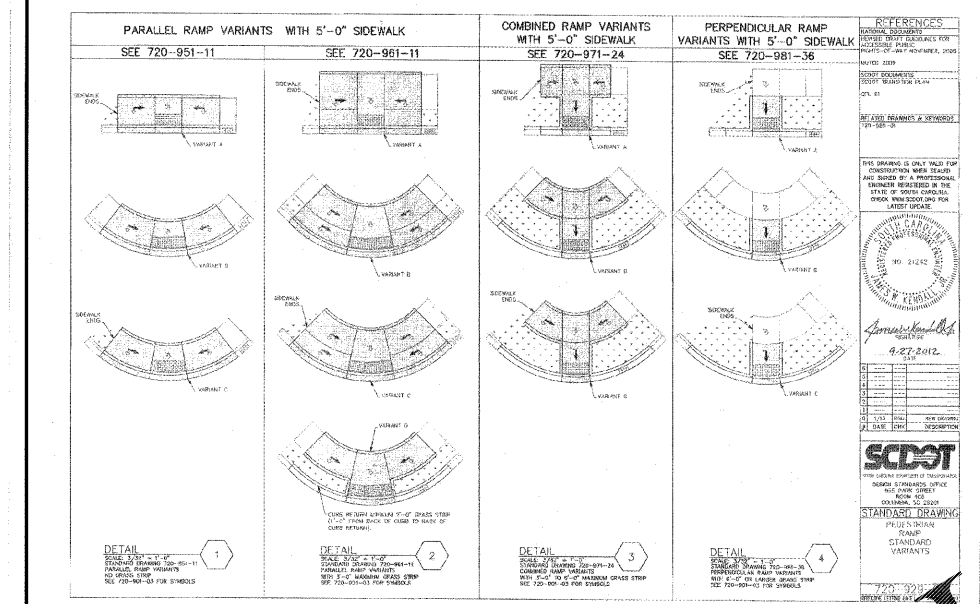
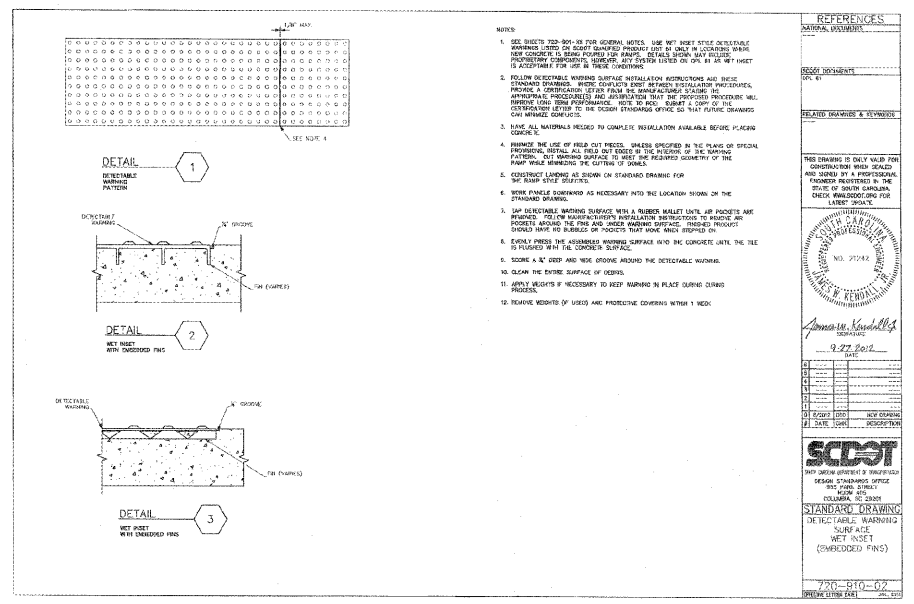


Drawing name: L-259002 - Carolina RE Holdings, LLC - Burger King - Kingstree, SC - Construction Details - 10 - Details - 3 - Aug 27, 2019 1:47pm By: michaelbohnhaber



LECRAW ENGINEERING  
© 2019 LECRAW ENGINEERING, INC.  
3475 CORPORATE WAY  
SUITE A  
DULUTH, GA 30066  
PHONE: 404.946.8100  
WWW.LECRAWENGINEERING.COM  
COA: 4400

NO.	DATE	BY	CHECKED BY
1	07/20/19	MAT	MSL
2	08/27/19	MAT	MSL
3	08/27/19	MAT	MSL

CLIENT: CAROLINA RE HOLDINGS, LLC  
300 GALLERIA PARKWAY - ATLANTA, GA 30339

PROJECT: BURGER KING - KINGSTREE, SC  
206 LONGSTREET STREET  
KINGSTREE, WILLIAMSBURG COUNTY, SOUTH CAROLINA

SEAL: SOUTH CAROLINA LeCraw Engineering, Inc. No. 4400

DESIGN TEAM:  
DRAWN BY: MAT  
DESIGNED BY: MAT  
REVIEWED BY: MSL

811 Know what's below. Call before you dig.

DETAILS ARE NOT DRAWN TO SCALE

JOB #: 259002  
DATE: JUNE 26, 2019  
CONSTRUCTION DETAILS - 3  
C-7.2