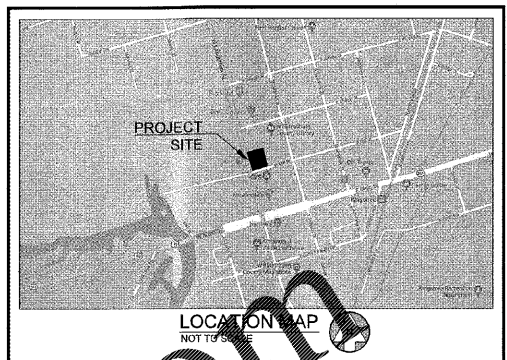
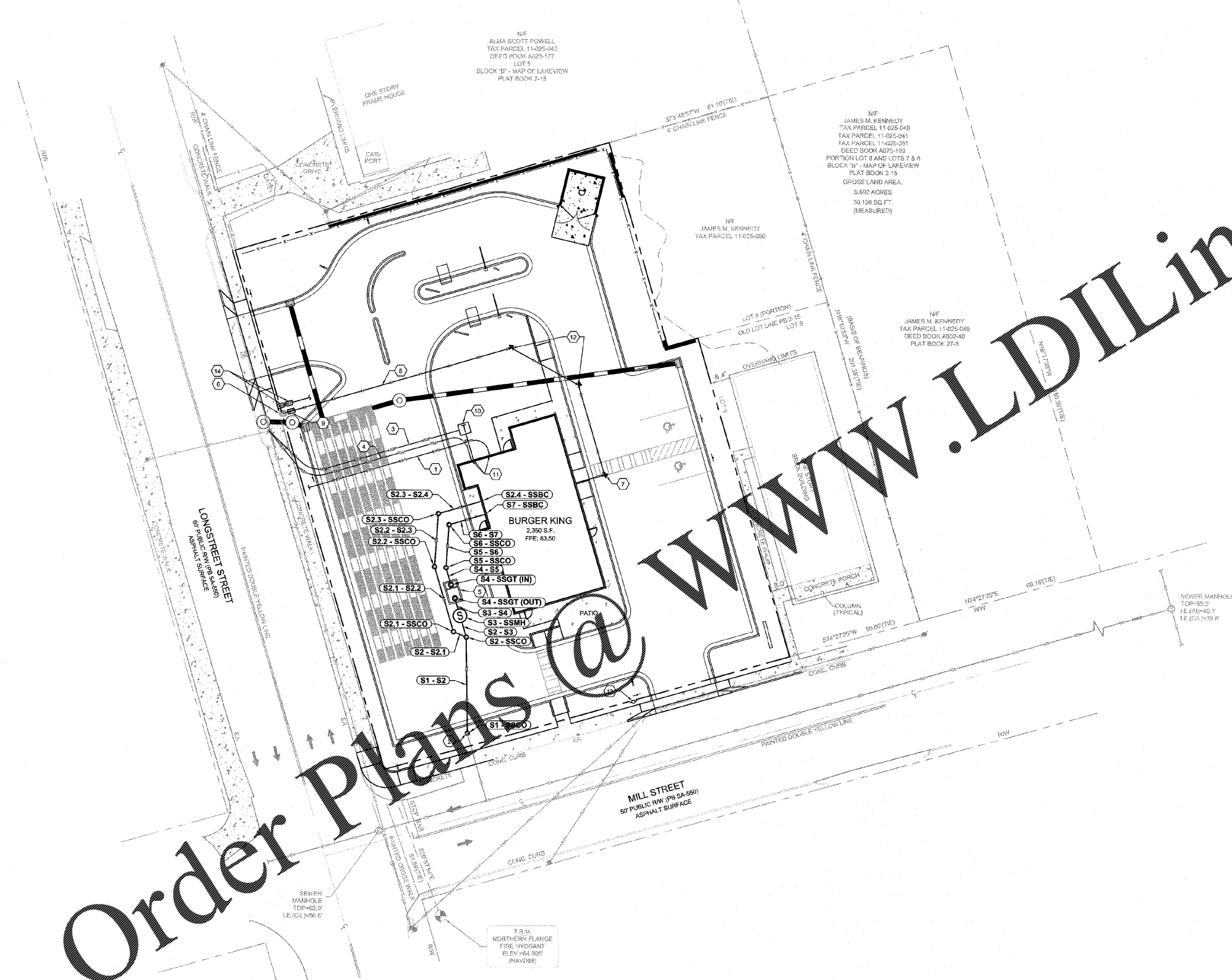


Order Plans @ www.LDILine.com



- GENERAL UTILITY NOTES:**
- CONTRACTOR TO NOTIFY OWNER, DEVELOPER AND ENGINEER IMMEDIATELY IF FIELD CONDITIONS DIFFER FROM DESIGN ASSUMPTIONS.
 - LOCATION OF ALL UNDERGROUND UTILITIES SHOWN IS BASED ON A SURVEY BY BARRETT SURVEYING GROUP, LLC, DATED APRIL 12, 2019. APPROPRIATE UTILITY COMPANIES SHOULD BE CONTACTED FOR VERIFICATION OF LOCATIONS PRIOR TO ANY CONSTRUCTION ACTIVITY.
 - MAINTAIN 10' HORIZONTAL SEPARATION BETWEEN WATER AND SEWER LINES.
 - REFER TO ARCH/MEP PLANS FOR ON SITE UTILITY CONDUITS FOR SITE LIGHTING, ETC. AND UTILITY ENTRY AND EXIT LOCATIONS.
 - VERTICAL DEPTH OF ALL DRY AND PRESSURIZED UTILITIES IS UNKNOWN. CONTRACTOR TO NOTIFY OWNER AND ENGINEER IMMEDIATELY IF ANY CONFLICTS ARE FOUND.

KEY NOTES

1	UNDERGROUND GAS SERVICE, CONTRACTOR TO COORDINATE WITH UTILITY PROVIDER FOR EXACT LOCATION AND CONTINUATION
2	CONNECTION TO SANITARY SEWER SYSTEM AT EXISTING SEWER STUB
3	UNDERGROUND POWER SERVICE, CONTRACTOR TO COORDINATE WITH UTILITY PROVIDER FOR EXACT LOCATION AND CONTINUATION
4	UNDERGROUND TELEPHONE SERVICE, CONTRACTOR TO COORDINATE WITH UTILITY PROVIDER FOR EXACT LOCATION AND CONTINUATION
5	1,500 GALLON GREASE TRAP, SEE MEP PLANS FOR DETAILS
6	EXISTING WATER METER TO BE REUSED IF DETERMINED TO BE 1.5" OR LARGER, OR OF ADEQUATE SIZE BASED ON RECOMMENDATIONS FROM MEP PLANS.
7	90° BEND WITH THRUST BLOCK
8	2" PVC DOMESTIC WATER LINE
9	PROPOSED 2" BACKFLOW PREVENTER
10	PROPOSED TRANSFORMER PER UTILITY PROVIDER SPECIFICATIONS
11	REFER TO ARCH PLANS FOR ALL LOCATIONS AND INTERNAL CONNECTIONS
12	45° BEND WITH THRUST BLOCK
13	PROPOSED LOCATION OF RELOCATED POWER POLE, CONTRACTOR TO COORDINATE WITH UTILITY PROVIDER
14	PROPOSED 1" WATER METER AND BACKFLOW FOR 3/4" IRRIGATION LINE

CAUTION
 THE UTILITIES SHOWN ARE SHOWN FOR THE CONTRACTORS CONVENIENCE ONLY. THERE MAY BE OTHER UTILITIES NOT SHOWN ON THESE PLANS. THE ENGINEER ASSUMES NO RESPONSIBILITY FOR THE LOCATIONS OF UNDERGROUND UTILITIES, AND IT SHALL BE THE CONTRACTORS RESPONSIBILITY TO VERIFY THE LOCATIONS OF ALL UTILITIES SHOWN AS WELL AS THOSE NOT SHOWN WITHIN THE CONSTRUCTION LIMITS. ALL DAMAGE MADE TO EXISTING UTILITIES BY THE CONTRACTOR SHALL BE THE RESPONSIBILITY OF THE CONTRACTOR.

SANITARY STRUCTURES

NAME:	TYPE:	STATION:	RIM:	INV IN: (PIPE)	INV OUT: (PIPE)
S1 - S2	CLEANOUT	0+00.00	62.87	55.40 (S1 - S2)	
S2 - SSCO	CLEANOUT	0+35.40	62.88	55.77 (S2 - S3) 55.77 (S2 - S2.1)	55.77 (S1 - S2)
S2.1 - SSCO	CLEANOUT	0+05.15	62.81	56.04 (S2.1 - S2.2)	56.04 (S2 - S2.1)
S2.2 - SSCO	CLEANOUT	0+30.17	62.74	57.15 (S2.2 - S2.3)	57.15 (S2.1 - S2.2)
S2.3 - SSCO	CLEANOUT	0+49.87	62.84	58.14 (S2.3 - S2.4)	58.14 (S2.2 - S2.3)
S2.4 - SBC	BUILDING CONNECTION	0+66.36	63.50		58.87 (S2.3 - S2.4)
S3 - SSMH	TEST MANHOLE	0+43.65	62.80	56.06 (S3 - S4)	55.86 (S2 - S3)
S4 - SSGT (IN)	GREASE TRAP	0+55.57	62.80	56.13 (S4 - S5)	
S4 - SSGT (OUT)	GREASE TRAP	0+50.40	62.80		56.13 (S3 - S4)
S5 - SSCO	CLEANOUT	0+62.15	62.80	56.33 (S5 - S6)	56.33 (S4 - S5)
S6 - SSCO	CLEANOUT	0+78.13	62.86	57.33 (S6 - S7)	57.33 (S5 - S6)
S7 - SBC	BUILDING CONNECTION	0+91.94	63.50		58.02 (S6 - S7)

SANITARY PIPES

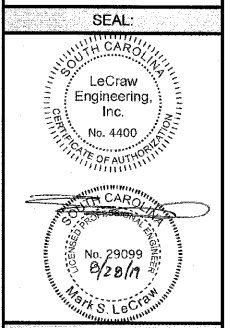
NAME:	SIZE:	LENGTH:	SLOPE:	INV UP:	INV DOWN:	MATERIAL:
S1 - S2	4"	35.40	1.06%	55.77 (S2 - SSCO)	55.40 (S1 - SSCO)	PVC
S2 - S2.1	4"	5.15	5.14%	56.04 (S2.1 - SSCO)	55.77 (S2 - SSCO)	PVC
S2 - S3	4"	8.25	1.00%	55.86 (S3 - SSMH)	55.77 (S2 - SSCO)	PVC
S2.1 - S2.2	4"	25.01	4.44%	57.15 (S2.2 - SSCO)	56.04 (S2.1 - SSCO)	PVC
S2.2 - S2.3	4"	16.71	5.01%	58.14 (S2.3 - SSCO)	57.15 (S2.2 - SSCO)	PVC
S2.3 - S2.4	4"	16.49	4.44%	58.87 (S2.4 - SBC)	58.14 (S2.3 - SSCO)	PVC
S3 - S4	4"	0.75	1.00%	56.13 (S4 - SSGT (OUT))	56.06 (S3 - SSMH)	PVC
S4 - S5	4"	6.58	3.00%	56.33 (S5 - SSCO)	56.13 (S4 - SSGT (IN))	PVC
S5 - S6	4"	15.98	6.27%	57.33 (S6 - SSCO)	56.33 (S5 - SSCO)	PVC
S6 - S7	4"	13.81	5.00%	58.02 (S7 - SBC)	57.33 (S6 - SSCO)	PVC

PREPARED IN THE OFFICE OF:
LECRAW ENGINEERING
 3475 CORPORATE WAY, SUITE A
 DULUTH, GA 30096
 PHONE - 478.448.8100
 WWW.LECRAWENGINEERING.COM
 COA - 4400

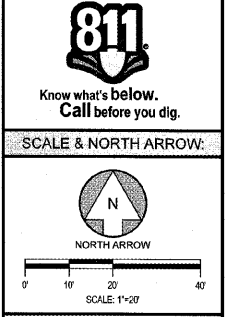
NO.	DATE	BY	CHECKED BY
1	06/27/19	MAT	MSL
2	06/27/19	MAT	MSL
3	07/02/19	MAT	MSL
4	07/02/19	MAT	MSL

CLIENT
 CAROLINA RE HOLDINGS, LLC
 300 GALLERIA PARKWAY - ATLANTA, GA 30339

PROJECT
 BURGER KING - KINGSTREE, SC
 206 LONGSTREET STREET
 KINGSTREE, WILLIAMSBURG COUNTY, SOUTH CAROLINA



DESIGN TEAM:
 DRAWN BY: MAT
 DESIGNED BY: MAT
 REVIEWED BY: MSL



JOB # 259002
DATE JUNE 26, 2019
UTILITY PLAN
C-5.0

Drawing Name: L259002 - Carolina RE Holdings, LLC - Burger King - Kingstree, SC (CAD/CADD/CONSTR) 259002 - 08 - UTILITY PLAN - Aug 27, 2019 1:45pm, by: michael.lecraw