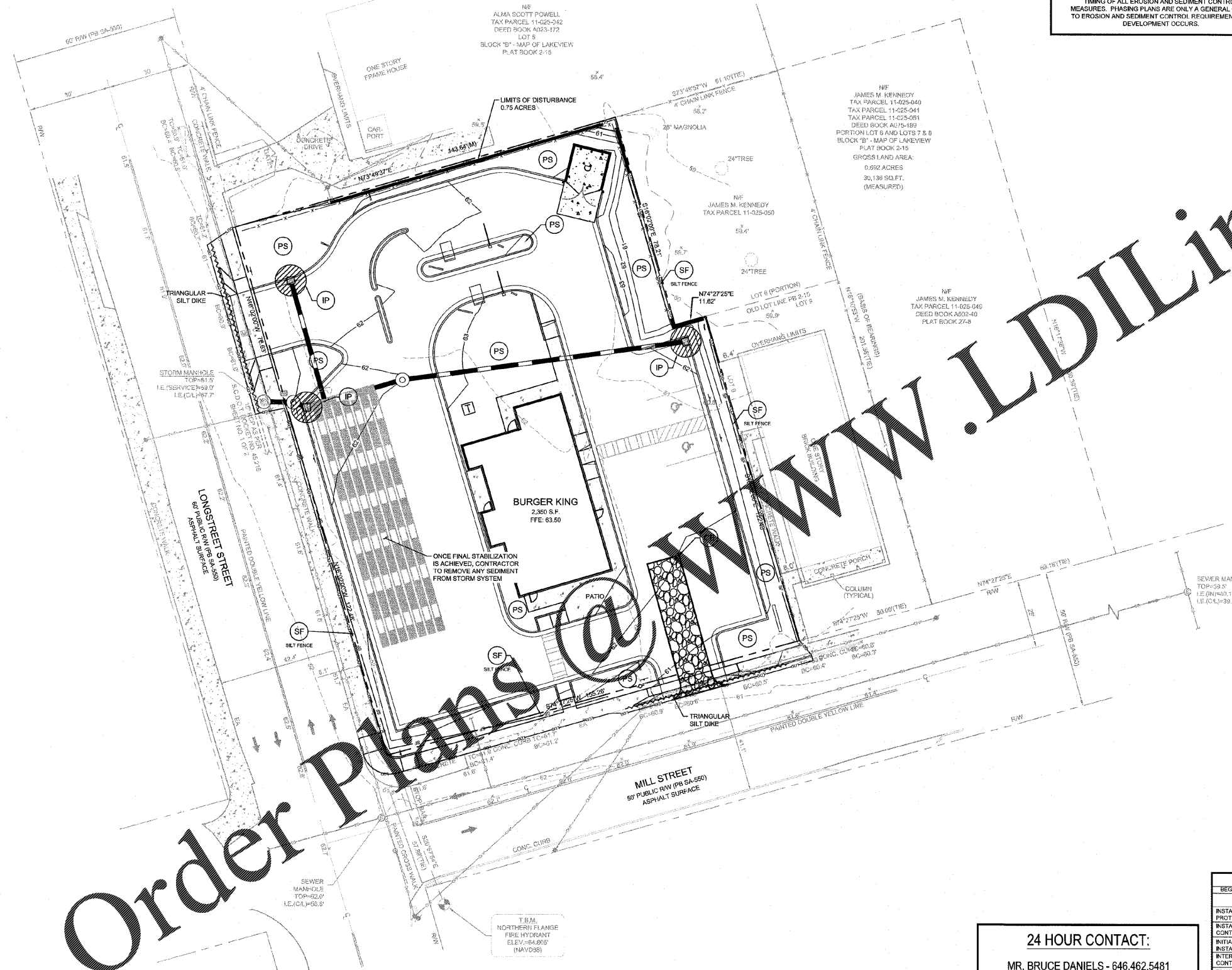
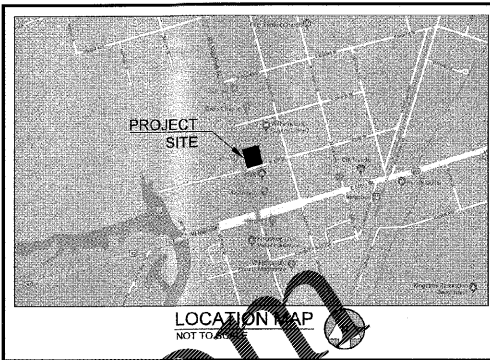


Drawing name: L259002 - Carolina RE Holdings, LLC - Burger King - E&S: Aug 27, 2019 1:30pm by michael nothwehr



SOIL SERIES
 Co: COXVILLE LOAM
 No: NOBOCC LOAMY FINE SAND, 0 - 2 PERCENT SLOPES

NOTE:
 CONTRACTOR IS RESPONSIBLE FOR THE SEQUENCE AND TIMING OF ALL EROSION AND SEDIMENT CONTROL MEASURES. PHASING PLANS ARE ONLY A GENERAL GUIDE TO EROSION AND SEDIMENT CONTROL REQUIREMENTS AS DEVELOPMENT OCCURS.



CODE	PRACTICE	DETAIL	MAP SYMBOL	DESCRIPTION
CD	OVERCROWD	[Symbol]	[Symbol]	A small temporary barrier or dam across a road or driveway to prevent vehicles from crossing into a restricted area.
CE	CONSTRUCTION SITE	[Symbol]	[Symbol]	A material placed and compacted at the construction site to prevent erosion and sediment from the nearby surrounding areas.
DB	OVERCROWD	[Symbol]	[Symbol]	A small barrier or dam placed across a road or driveway to prevent vehicles from crossing into a restricted area.
SF	SEDIMENT CONTROL	[Symbol]	[Symbol]	A device to prevent sediment from being carried off the site by stormwater runoff. It is placed in a line across a slope to catch sediment before it reaches the water.
IP	STORMWATER POLLUTION PREVENTION	[Symbol]	[Symbol]	Stormwater that is captured in a stormwater management system is treated before being discharged to a water body. This system is used to prevent stormwater from entering a water body.
SB	TEMPORARY SEDIMENT DIVERTER	[Symbol]	[Symbol]	A device used to divert sediment from a site to a designated area. It is placed in a line across a slope to catch sediment before it reaches the water.

MEASURE	DESCRIPTION	DETAIL	DESCRIPTION
M	TEMPORARY AREA STABILIZATION (WITH MULCHING ONLY)	[Symbol]	Establishing temporary protection for disturbed areas where seeding is not a suitable growing medium to produce an erosion reducing cover.
TS	TEMPORARY AREA STABILIZATION (WITH TEMPORARY SEEDING)	[Symbol]	Establishing temporary vegetative cover with fast growing seedlings on disturbed areas.
PS	TEMPORARY AREA STABILIZATION WITH PERMANENT VEGETATION	[Symbol]	Establishing permanent vegetative cover with an erosion reducing grasses, sedges, or legumes on disturbed areas.
ECB	EROSION CONTROL BARRIERS	[Symbol]	The installation of a protective covering (blanket) or soil stabilization mat on a disturbed area of a steep slope, channel, or structure.

GENERAL SITE NOTES:

- ALL BEST MANAGEMENT PRACTICES ARE TO BE IN ACCORDANCE WITH THE SOUTH CAROLINA DHEC BMP HANDBOOK PUBLISHED BY THE SOUTH CAROLINA DEPARTMENT OF HEALTH AND ENVIRONMENTAL CONTROL.
- SURVEY BY BARRETT SURVEYING GROUP, LLC, DATED APRIL 12, 2018.
- SOIL TYPES FOR ENTIRE DISTURBED AREA IS CO & NO PER NRG'S WEB SOIL SURVEY.
- THE ESCAPE OF SEDIMENT FROM THE SITE SHALL BE PREVENTED BY THE INSTALLATION OF EROSION AND SEDIMENTATION CONTROL MEASURES AND PRACTICES SHALL BE MAINTAINED PRIOR TO OR CONCURRENT WITH LAND DISTURBING ACTIVITIES.
- EROSION AND SEDIMENTATION CONTROL MEASURES AND PRACTICES SHALL BE MAINTAINED AT ALL TIMES. IF FULL IMPLEMENTATION OF THE APPROVED PLAN DOES NOT PROVIDE FOR EFFECTIVE EROSION CONTROL, ADDITIONAL EROSION AND SEDIMENT CONTROL MEASURES SHALL BE IMPLEMENTED TO CONTROL OR TREAT THE SEDIMENT SOURCE. ADDITIONAL EROSION AND SEDIMENTATION CONTROL MEASURES AND PRACTICES SHALL BE INSTALLED IF DEEMED NECESSARY BY ON-SITE INSPECTION.
- SEDIMENT STORAGE MAINTENANCE INDICATORS MUST BE INSTALLED IN SEDIMENT STORAGE STRUCTURES, AS REQUIRED, INDICATING THE 1/3 FULL VOLUME.
- MAINTENANCE OF ALL SOIL EROSION AND SEDIMENTATION CONTROL MEASURES AND PRACTICES, WHETHER TEMPORARY OR PERMANENT, SHALL BE AT ALL TIMES THE RESPONSIBILITY OF THE PROPERTY OWNER.
- WASHOUT OF CONCRETE DRUM AT CONSTRUCTION SITE IS PROHIBITED AND NOT ALLOWED IN WASH AREAS.

TOTAL DISTURBED AREA = 0.75 AC

DESCRIPTION	SCHEDULE OF MAJOR ACTIVITIES		ESTIMATED COMPLETION	
	OCT	NOV	DEC	JAN
BEGIN CONSTRUCTION	OCTOBER 2019			
INSTALL & MAINTAIN TREE PROTECTION FENCE	[Bar chart showing duration from Oct to Jan]			
INSTALL & MAINTAIN SEDIMENT CONTROL STRUCTURES	[Bar chart showing duration from Oct to Jan]			
INITIAL PHASE EROSION CONTROL BMP INSTALLATION	[Bar chart showing duration from Oct to Jan]			
INTERMEDIATE PHASE EROSION CONTROL BMP INSTALLATION	[Bar chart showing duration from Oct to Jan]			
FINAL PHASE EROSION CONTROL BMP INSTALLATION	[Bar chart showing duration from Oct to Jan]			
INSTALLATION AND MAINTENANCE OF TEMPORARY SEDIMENT BASIN (RETROFIT)	[Bar chart showing duration from Oct to Jan]			
DEMOLITION, CLEARING, AND GRUBBING	[Bar chart showing duration from Oct to Jan]			
GRADING	[Bar chart showing duration from Oct to Jan]			
TEMPORARY MULCHING/SEEDING AS REQ'D TO STABILIZE @ 14 DAY INTERVALS (STORM AND SANITARY)	[Bar chart showing duration from Oct to Jan]			
BUILDING CONSTRUCTION	[Bar chart showing duration from Oct to Jan]			
PAVING	[Bar chart showing duration from Oct to Jan]			
FINAL STABILIZATION/PERMANENT AS REQ'D AT 30 DAY INTERVALS	[Bar chart showing duration from Oct to Jan]			
REMOVE SEDIMENT CONTROL STRUCTURES	[Bar chart showing duration from Oct to Jan]			
FINAL CLEAN-UP	[Bar chart showing duration from Oct to Jan]			

24 HOUR CONTACT:
 MR. BRUCE DANIELS - 646.462.5481
 CAROLINA RE HOLDINGS, LLC

PROPERTY OWNER:
 CAROLINA RE HOLDINGS, LLC
 300 GALLERIA PARKWAY
 ATLANTA, GA 30339
 646.462.5481
 CONTACT:
 MR. BRUCE DANIELS

Order Plans @ www.LDILine.com

LECRAW ENGINEERING
 PREPARED IN THE OFFICE OF
 © 2019 LECRAW ENGINEERING, INC.
 3475 CORPORATE WAY, SUITE A
 DULUTH, GA 30096
 PHONE: 770.441.0228
 FAX: 770.441.0228
 WWW.LECRAWENGINEERING.COM
 COA: 4400

NO.	DATE	BY	DESCRIPTION
1	08/27/19	MAT	ISSUED FOR PERMIT
2	09/15/19	MAT	REVISED PER COMMENTS
3	07/02/19	MSL	REVISED PER COMMENTS

CLIENT:
 CAROLINA RE HOLDINGS, LLC
 300 GALLERIA PARKWAY - ATLANTA, GA 30339

PROJECT:
 BURGER KING - KINGSTREE, SC
 206 LONGSTREET STREET
 KINGSTREE, WILLIAMSBURG COUNTY, SOUTH CAROLINA

SEAL:
 SOUTH CAROLINA
 LeCraw Engineering Inc.
 No. 4400
 PROFESSIONAL ENGINEER
 STATE OF SOUTH CAROLINA

DATE:
 8/22/19
 Mark S. LeCraw

DESIGN TEAM:
 DRAWN BY: MAT
 DESIGNED BY: MAT
 REVIEWED BY: MSL

811
 Know what's below.
 Call before you dig.

SCALE & NORTH ARROW:
 SCALE: 1"=20'
 NORTH ARROW

JOB #: 259002
 DATE: JUNE 26, 2019
EROSION CONTROL PLAN - PHASE 2
C-2.1