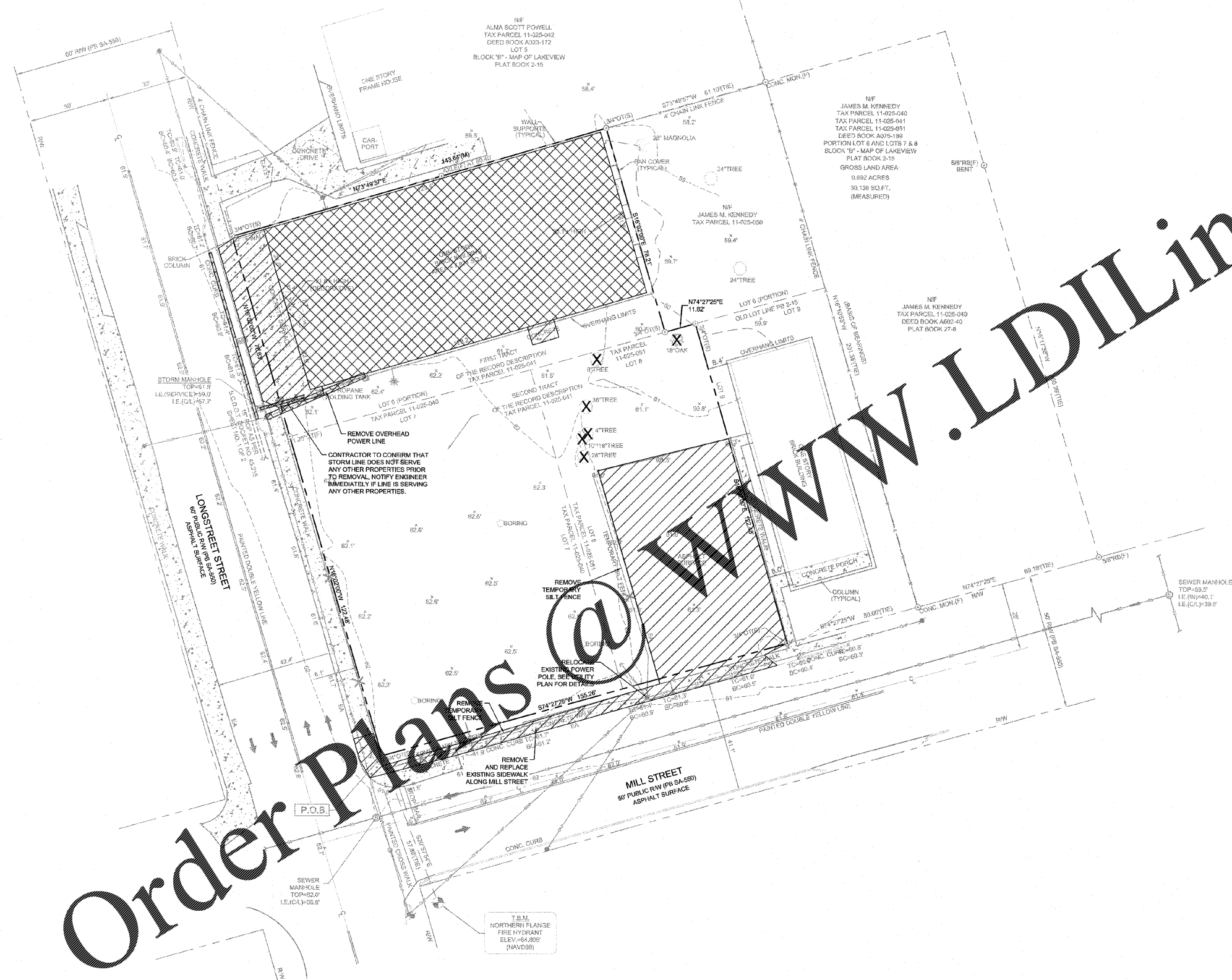
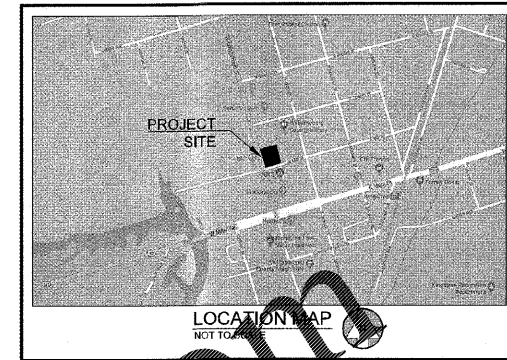


Drawing name: L:\256002 - Carolina RE Holdings, LLC - Burger King - Kingtree, SCCAD\CONSTR\256002 - 02 - DEMO.dwg DEMOLITION PLAN Aug 27, 2019 1:38pm by: michael.trotter



**Order Plans @**



- GENERAL DEMOLITION NOTES:**
- 1) CONTRACTOR TO ENSURE ALL APPROPRIATE EROSION CONTROL MEASURES, INCLUDING TREE PROTECTION FENCING, ARE IN PLACE PRIOR TO ANY DEMOLITION ACTIVITY TAKING PLACE.
  - 2) CONTRACTOR SHALL BE RESPONSIBLE FOR ALL APPLICABLE FEDERAL, STATE, AND LOCAL LAWS CONCERNING THE REMOVAL, DEMOLITION, AND/OR DISPOSAL OF POSSIBLE HARMFUL MATERIALS INCLUDING LEAD PAINT, ASBESTOS, ETC. DURING ALL PHASES OF CONSTRUCTION.
  - 3) CONTRACTOR TO SAW CUT EXISTING PAVEMENT FULL DEPTH AT EDGE OF DEMOLITION LIMITS.
  - 4) ALL ITEMS NOTED FOR REMOVAL/DEMOLITION SHALL BE REMOVED FROM THE SITE OR DISPOSED OF IN A LEGAL MANNER.
  - 5) BOUNDARY & TOPOGRAPHIC SURVEY BY BARRETT SURVEYING GROUP, LLC, DATED APRIL 12, 2019. BENCHMARK IS NOTED ON SURVEY.
  - 6) FLOOD PLAIN IS NOT PRESENT ON THIS SITE AS SHOWN ON THE FEMA FIRM MAP NUMBER 45080C0262D, DATED NOVEMBER 16, 2012.
  - 7) VERTICAL DEPTH OF ALL DRY AND PRESSURIZED UTILITIES IS UNKNOWN. CONTRACTOR TO NOTIFY OWNER AND ENGINEER IMMEDIATELY IF ANY CONFLICTS ARE FOUND.

**LEGEND:**

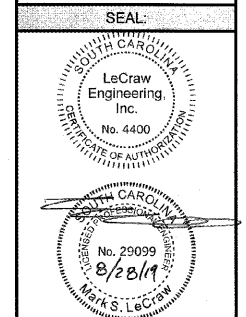
- DEMOLISH EXISTING STRUCTURES
- DEMOLISH PAVEMENT / CURB AND GUTTER
- DEMOLISH EXISTING UTILITIES
- DEMOLISH EXISTING TREE

PREPARED IN THE OFFICE OF  
**LECRAW ENGINEERING**  
 2019 LECRAW ENGINEERING, INC.  
 SUITE A  
 3475 CORPORATE WAY  
 DULUTH, GA 30099  
 PHONE: 770.441.0280  
 FAX: 770.441.0281  
 WWW.LECRAWENGINEERING.COM  
 COX: 4400

NO.	DATE	BY	CHECKED
1	07/20/19	MSL	MSL
2	08/15/19	MSL	MSL
3	08/27/19	MAT	MSL

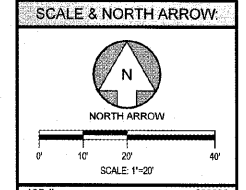
**CLIENT:**  
 CAROLINA RE HOLDINGS, LLC  
 300 GALLERIA PARKWAY - ATLANTA, GA 30339

**PROJECT:**  
 BURGER KING - KINGSTREE, SC  
 208 LONGSTREET STREET  
 KINGSTREE, WILLIAMSBURG COUNTY, SOUTH CAROLINA



**DESIGN TEAM:**

DRAWN BY: MAT  
 DESIGNED BY: MAT  
 REVIEWED BY: MSL



JOB #: 256002  
 DATE: JUNE 26, 2019  
**DEMOLITION PLAN**  
**C-1.0**