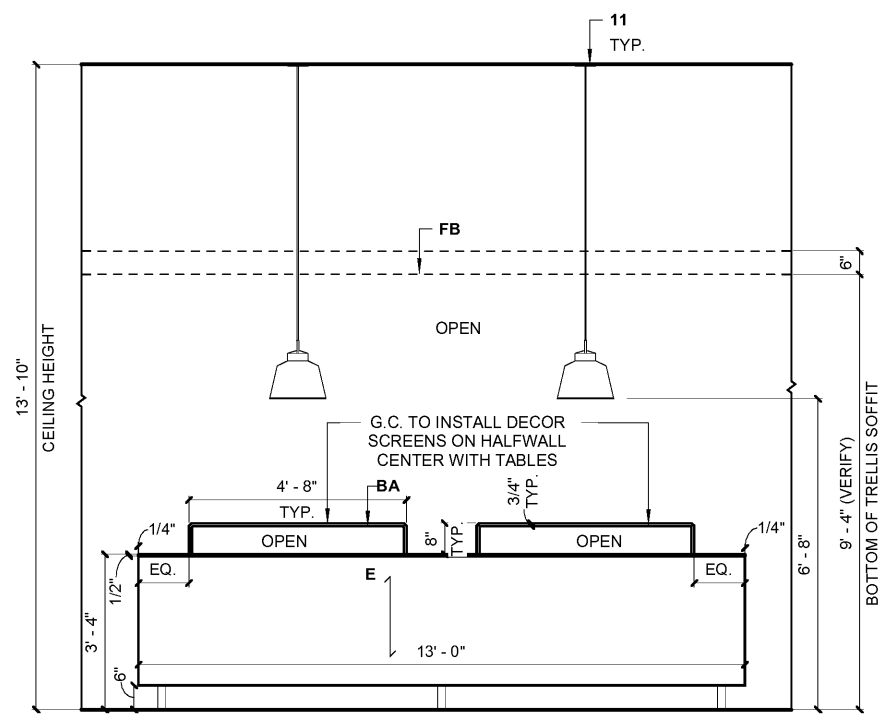
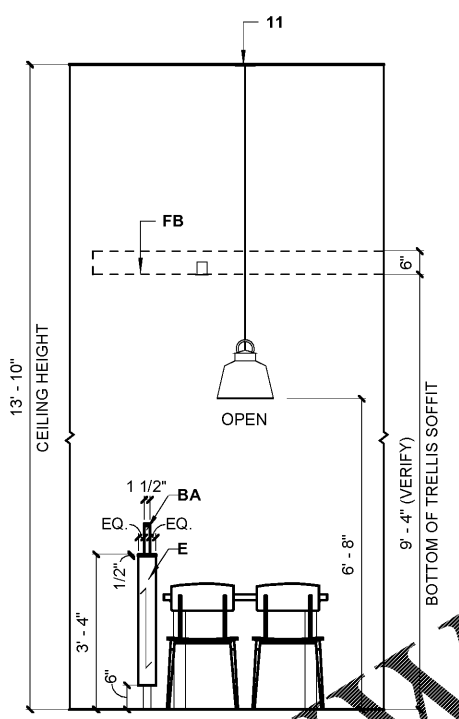


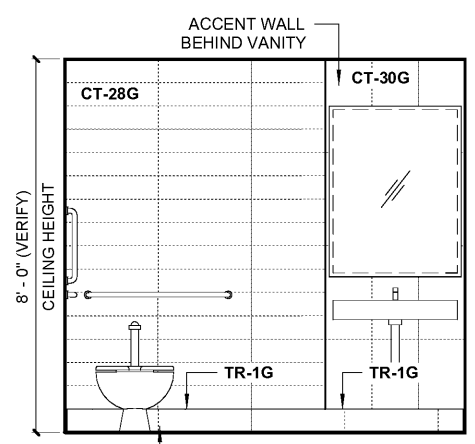
NOTE:
 - THIS IS PROPRIETARY TO EIS. ANY UNAUTHORIZED USE OR REPRODUCTION IS STRICTLY PROHIBITED.
 - IF SPECIFIED ITEMS ARE NOT AVAILABLE, PLEASE CONTACT EIS IMMEDIATELY.
 - WRITTEN DIMENSIONS HAVE PRECEDENCE OVER SCALE IN ALL CASES.
 - SERVICE COUNTER FINISHES TO WRAP AROUND END OF COUNTER.
 - BOTTOM OF PENDANT LIGHTS TO BE PLACED AT DESIGNATED HEIGHTS.



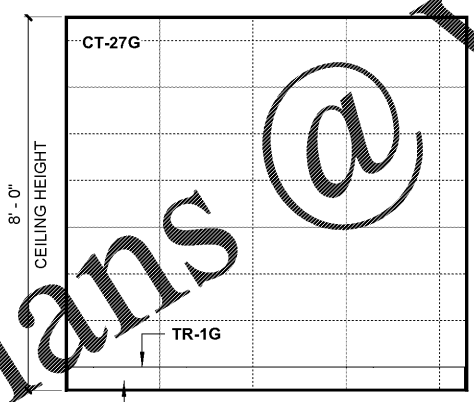
J ELEVATION
 3/8" = 1'-0"



K ELEVATION
 3/8" = 1'-0"



L ELEVATION
 3/8" = 1'-0"



M ELEVATION
 3/8" = 1'-0"

Order Plans @ WWW.LDILine.com

Account Executive
Domie Harrelson
 706-841-7600
 domie.harrelson@elkay.com

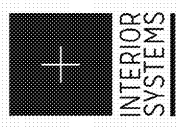
Drawn By
MS.GRK
 Date:
07/26/2019

Contact
Bruce Daniels
 646-462-5481
 bruce.daniels@carolinaranchholdings.com

Designer
Stephanie Rutledge
 414-847-0675
 stephanie.rutledge@elkay.com

Location
 Beech Island Drive and Atomic Road
Beech Island, SC
 29842

Project Manager
Ryan Spannagle
 414-847-0658
 ryan.spannagle@elkay.com



| REV | DATE | DESCRIPTION | BY |
|-----|---------|------------------------|-------|
| | 8/8/19 | Bid Set Created | SR |
| | 8/9/19 | Brand Review Approved | SR |
| | 8/15/19 | Final Plan Set Created | JC/SR |

Project Number
113123

Sheet Title
Elevations

Sheet
I-5b

