

PLUMBING FIXTURE SCHEDULE					
MARK	FIXTURE	MANUFACTURER	MODEL NUMBER	MODEL NAME	VALVE
P-1	WATER CLOSET	AMERICAN STANDARD	2234.015	MADERA	SLOAN ROYAL #110 ZURN #Z6000AV-HET 1.25GPF
P-2	WATER CLOSET - ADA	AMERICAN STANDARD	3043.001	MADERA	SLOAN ROYAL #110 ZURN #Z6000AV-HET 1.25GPF
P-3	URINAL - ADA	AMERICAN STANDARD	6506.011	WASHBROOK	SLOAN ROYAL #186 ZURN #Z6003AV-EWS .50 GPF
P-4	LAVATORIES	COMMERCIAL INTERIORS MANUFACTURING (CIM)	CUSTOM THROUGH SINK	GLACIER WHITE	FAUCET: WATERFRONT MODEL: 300988 SINGLE LEVER HANDLE LAVATORY FAUCET, CHROME-PLATED FINISH
P-5	MOP SINK	CAST IN PLACE			CHICAGO #897-CP -OR- AMERICAN STANDARD #8344.111 -OR- KOHLER #8907
P-6	WATER HEATER	RINNAI -OR- RINNAI	C1991 RUR98i	REU-KBD3237FFUDC-US REU-KBP3237FFUD-US	
P-7	TEMPERING VALVE	WATTS	N170L-M2		
P-8	FLOOR SINK	JOSAM J.R. SMITH ZURN	49300 (49320A AT 3-COMP SINK) 3100 (3111 AT 3-COMP SINK) Z1910 (Z1900 AT 3-COMP SINK)		
P-9	FLOOR DRAIN	JOSAM J.R. SMITH ZURN	30000-50 2010-AP Z-415B-P		

NOTES:
 1. COMPARABLE FIXTURES BY AMERICAN STANDARD, ELJER AND KOHLER ARE ACCEPTABLE.
 2. TOILET SEATS TO BE CHURCH 9500SSC, KOHLER K-4671-C, OLSONITE #10C OR EQUAL.
 3. IN SINGLE USE RESTROOMS ALL FIXTURE MUST BE ADA COMPLIANT.

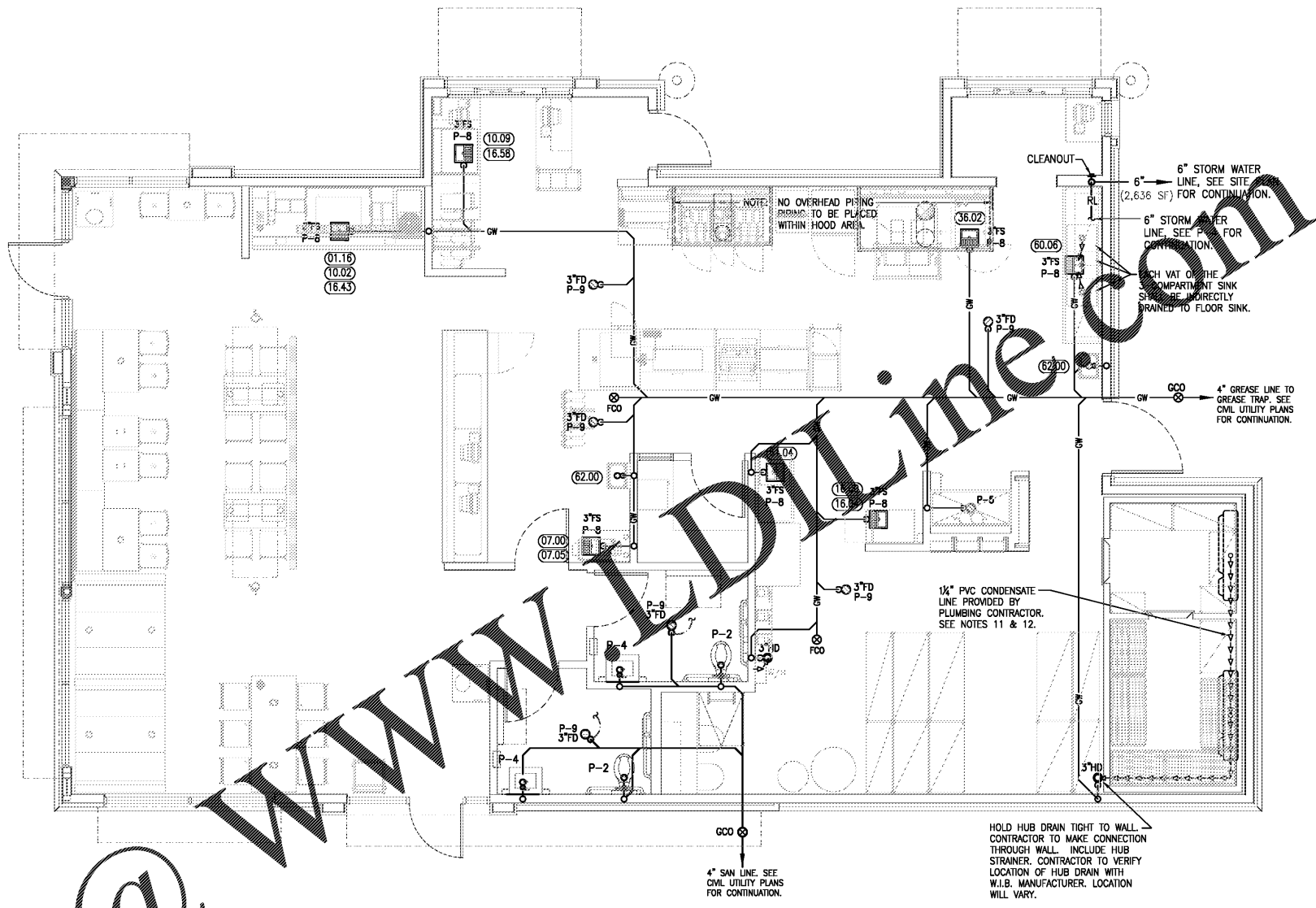
NOTES:

- PLUMBING CONTR. TO COORDINATE VENT STACKS WITH OUTSIDE AIR INTAKES OF A/C UNITS AND SUPPLY FANS & MAINTAIN AT LEAST 10'-0" MIN. CLEARANCE OR AS PER LOCAL CODE REQUIREMENTS. FLAT VENTS ARE NOT ALLOWED.
- INCREASE V.T.R.'S TO SIZE REQUIRED BY LOCAL CODES AND CONDITIONS AS REQUIRED FOR FROST ENCLOSURE. FLAT VENTS ARE NOT ALLOWED.
- RUN SYRUP LINES FROM SODA FACTORY TO DRINK DISPENSER ABOVE CEILING.
- CAST IRON PIPE MAY BE USED UNDER SLAB IN LIEU OF PVC ONLY IF REQUIRED BY CODE.
- PROVIDE CONDENSATE LINES FROM A/C UNITS ABOVE CEILING ACCORDING TO LOCAL CODE REQUIREMENTS.
- RESLAB FLOOR DRAINS ACCORDING TO LOCAL REQUIREMENTS.
- SAFEWASTE PIPING ABOVE AND ALONG FLOOR SHALL BE SIZED IN ACCORDANCE WITH LOCAL CODE REQUIREMENTS.
- COORDINATE SAFEWASTE LINE CONNECTIONS WITH EQUIPMENT ROUGH-IN.
- P.V.C. (SCHEDULE 40) PIPE CAN BE USED FOR VENTS AND WASTE ONLY IF APPROVED BY LOCAL BUILDING CODES. SEE SPECS. FOR ADD'L INFO.
- SEE FOUNDATION PLAN FOR EXACT LOCATION OF FLOOR DRAINS AND FLOOR SINKS.
- WALK-IN-BOX CONDENSATE LINE. PLUMBING CONTRACTOR SHALL FURNISH AND INSTALL 1/2" CONDENSATE LINE, AND SEAL AROUND ALL PENETRATIONS THROUGH THE WALK-IN-BOX.
- HEAT TAPE IS PROVIDED BY WALK-IN-BOX MANUFACTURER AND INSTALLED BY ELECTRICAL CONTRACTOR. IT IS TO BE SELF-LIMITING TYPE, "TROSTEX" OR EQUAL.

LEGEND

LEGEND MAY CONTAIN ITEMS NOT USED IN THIS BUILDING. CONTRACTOR TO VERIFY.

—— GW ——	GREASY WASTE LINE
—— SW ——	SANITARY WASTE LINE
—— RL ——	RAIN WATER LINE
←←←← SAFEWASTE PIPING	
F.C.O.—	FLOOR CLEANOUT
F.D.—	FLOOR DRAIN
F.S.—	FLOOR SINK
(HUB OR FUNNEL DRAIN)	
V.T.R.—	VENT THRU-ROOF
(FIXTURE TRAP)	
W.C.O.—	WALL CLEAN OUT
— VENT PIPING	
— VENT PIPING	1/2" TRAP PRIMER PIPING



SANITARY AND GREASE WASTE PLAN

SCALE: 1/4" = 1'-0"

Order Plans @ WWW.Online.com

B1931

DATE	RELEASE
08.26.19	FOR CONSTRUCTION

CHECKED BY:
DRAWN BY:

NOTE:
 THESE DRAWINGS ARE THE PROPERTY OF ARIE KOHN ARCHITECTS, P.C. AND SHALL NOT BE USED, REPRODUCED, AND/OR MODIFIED WITHOUT WRITTEN CONSENT FROM ARIE KOHN ARCHITECTS, P.C.

DRAWINGS FOR:
BRUCE DANIELS
CAROLINA RE HOLDINGS, LLC
 P.O. BOX 711
 GREENWOOD, SC 29649
 846-462-5481



AKA ARIE KOHN ARCHITECTS, PC
 74 WOODSTOCK ROAD, ROSWELL, GA 30075
 TEL: (770) 642-9030 FAX: (770) 642-3785
 EMAIL: arie@akomarch.com



PROJECT: B1931
 DATE: 07/22/2019

SC HWY. 5-781 & SC HWY. 125
 BEECH ISLAND, SC 29642

BURGER KING RESTAURANT
 #026-20-03-003

WASTE & VENT FLOOR PLAN, SCHEDULE & LEGEND

