

SYMBOL LEGEND	
DETAIL	DESCRIPTION
	TOGGLE SWITCH - SINGLE POLE HUBBELL #1221-1
	PUSHBUTTON SWITCH
	SINGLE RECEPTACLE HUBBELL #5361-1
	DUPLEX RECEPTACLE HUBBELL #5362-1
	208V RECEPTACLE HUBBELL 208V, 1P - #5352-1 208V, 3P - #5420
	TELEPHONE OUTLET WITH BUSHED HOLE COVERPLATE
	JUNCTION OR GANG BOX
	CABLE TELEVISION OUTLET
	BUZZER / BELL
	REAR DOOR ALARM
	TRANSFORMER PAD

ABBREVIATIONS	
	CONDUIT RUN WITH ARROW DENOTING HOMERUN. SUBSCRIPT INDICATES PANEL AND CIRCUIT NO. GROUND CONDUCTOR REQUIRED IN ALL CONDUITS BUT NOT INDICATED.
GFCI	GROUND FAULT CIRCUIT INTERRUPTING
W.P.	WEATHERPROOF
A.F.F.	ABOVE FINISHED FLOOR.
I.G.	ISOLATED GROUND

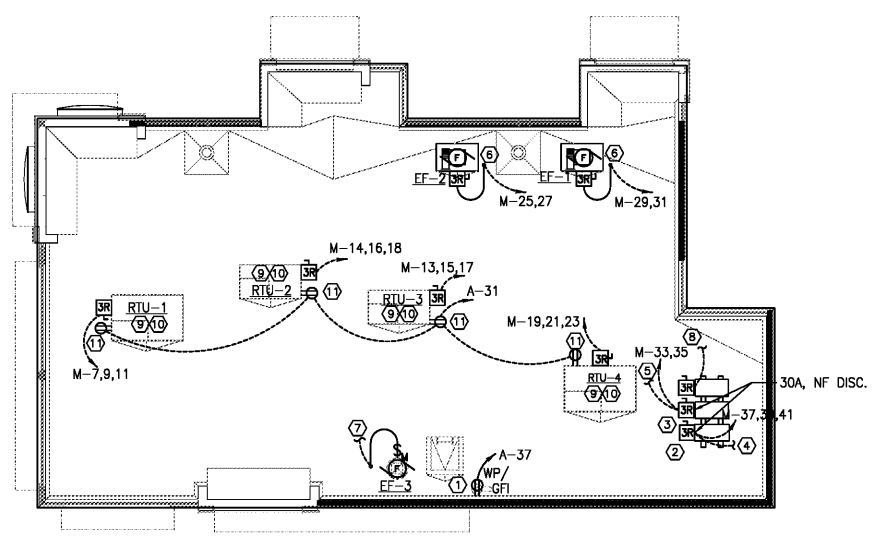
- (X) KEYED NOTES - PLAN:**
- FRYER HOOD: PRE-WIRED (WITH RECEPTABLES BY HOOD MANUFACTURER. ELECTRICAL CONTRACTOR TO MAKE CONNECTION AT JUNCTION BOX AT THE TOP OF THE HOOD.
 - BROLER HOOD: PRE-WIRED (WITH DUPLEX RECEPTABLES) BY HOOD MANUFACTURER. ELECTRICAL CONTRACTOR TO MAKE CONNECTION AT JUNCTION BOX AT THE TOP OF THE HOOD. ELECTRICAL CONTRACTOR TO PROVIDE RECEPTABLE AND COVER PLATE FOR THE OVEN AND BROLER BASED ON EQUIPMENT SELECTED.
 - ELECTRICAL CONTRACTOR TO RUN CONDUITS AND WIRE THROUGH THE EQUIPMENT CHASE AND CONNECT TO CIRCUITS PROVIDED IN THE JUNCTION BOX BY EQUIPMENT MANUFACTURER.
 - VERIFY POWER REQUIREMENTS FOR SELECTED WATER HEATER.
 - REAR DOOR ALARM: "MONITOR 4000" BY SECURITY PRODUCTS, INC. OR APPROVED EQUAL. MOUNT SIMPLEX RECEPTACLE FOR POWER SUPPLY 6" ABOVE CEILING.
 - PERMANENTLY CONNECTED KITCHEN EQUIPMENT NOT SUPPLIED WITH ON/OFF UNIT SWITCH (WHICH IS PART OF THE APPLIANCE) TO SERVE AS A DISCONNECTING MEANS. UNIT SHALL BE SUPPLIED WITH A DISCONNECT AS PER N.E.C., FURNISHED BY THE ELECTRICAL CONTRACTOR.
 - G.C. TO VERIFY ELECTRICAL REQUIREMENTS FOR FIRE SUPPRESSION SYSTEM AND AUTO-SELENOID GAS SHUT-OFF VALVE.
 - RUN 2" CONDUIT TO MANAGERS OFFICE FOR CABLE TV.
 - HEAT TAPE IS PROVIDED BY THE WALK-IN BOX MANUFACTURER AND INSTALLED BY THE ELECTRICAL CONTRACTOR. CONTRACTOR SHALL COORDINATE INSTALLATION AND SUPPLY 120V CIRCUIT AND RECEPTABLE AS DIRECTED BY BOX MANUFACTURER.
 - DIGITAL MENU BOARDS (VERIFY 3 OR 4 BOARD INSTALLATION). PROVIDE (1) DUPLEX RECEPTACLE FOR 120V CIRCUIT AND (1) P-RING FOR DATA CABLE AT EACH MENU BOARD SCREEN. REFER TO DETAIL, SHEET E-4.
 - STAINLESS STEEL SERVICE CHASE TO CEILING FURNISHED BY THE EQUIPMENT MANUFACTURER.
 - CONTRACTOR SHALL OBTAIN WIRING DIAGRAM FROM THE WALK-IN BOX MANUFACTURER AND INSTALL AS DIRECTED.
 - CONTRACTOR SHALL COORDINATE EQUIPMENT INSTALLATION WITH THE EQUIPMENT MANUFACTURER'S INSTALLATION PERSONNEL.
 - PRE-WIRED BRANCH CIRCUITS DISCONNECTED FOR SHIPMENT TO BE RE-CONNECTED BY GC PER MANUFACTURER'S INSTALLATION SPECIFICATIONS.
 - ELECTRICAL CONTRACTOR TO PROVIDE CORD AND PLUG AND WIRE TO BROLER BASED ON EQUIPMENT SELECTED.
 - CONTRACTOR SHALL COORDINATE CONDUIT RUN BETWEEN FREEZER/COOLER EVAPORATORS AND ROOF-TOP REFRIGERATION UNIT WITH THE MANUFACTURER'S FURNISHED WIRING HARNESS.
 - ELECTRICAL CONTRACTOR TO PROVIDE FLUSH MOUNTED JUNCTION BOXES INSIDE WALL @ 48" A.F.F. WITH STUB-UPS TO CEILING FOR AMERX PULL STATION AS REQUIRED BY EQUIPMENT SUPPLIER.
 - SMOKE DETECTOR ALARM PANEL: REFER TO SHEET M-1 FOR LOCATION OF A/C UNITS SMOKE DETECTORS.
 - PROVIDE (2) 2" CONDUITS FOR POWER & COMMUNICATIONS FROM 9'-6" A.F.F. INSIDE THE WALL & RUN UNDERGROUND TO THE DRIVE THRU ORDER STATIONS. COORDINATE W/ CIVIL & EQUIPMENT SUPPLIER PRIOR TO ROUGH-IN.
 - 6" BELOW CEILING FOR CONDENSATE DRAIN LINE TAPE HEATER.
 20. TO MASTER RELAY PANEL. REFER TO SHEET E-5
 21. MANUAL ON-OFF CONTROL PANEL. REFER TO SHEET E-5
 22. MASTER CONTACTOR PANEL. REFER TO SHEET E-5 AND NOTE #23, BELOW.
 23. SWITCH GEAR OPTION #1:
RECESS ELECTRICAL CONTACTOR PANEL & PANELS 'A', 'B', & 'M' IN FURRED OUT WALL ADJACENT TO EXTERIOR FRAMING. G.C. TO VERIFY PANEL SIZES PRIOR TO FURR-OUT TO INSURE ADEQUATE SPACE.
 24. SWITCH GEAR OPTION #2:
HILL PHOENIX INTEGRATED WALL UNIT INCLUDES PANELS 'A', 'B', 'M' AND MASTER CONTACTOR PANEL IN ONE CABINET. UNIT TO BE SURFACE MOUNTED ON 4" HIGH CONCRETE CURB. REFERENCE SHEET E-3 AND E-5 FOR ADDITIONAL INFORMATION.
 24. PROVIDE VISUAL STROBE ALARM MOUNTED AT 80" A.F.F. TIE TO H.V.A.C. SMOKE ALARM SYSTEM.

- ELECTRICAL CONTRACTOR (EC) - GENERAL NOTES:**
- ALL WORK SHALL BE IN ACCORDANCE WITH THE NATIONAL ELECTRICAL CODE AND OTHER APPLICABLE CODES AND STANDARDS.
 - ALL DEVICE BOXES SHALL BE INSTALLED FLUSH AND CONDUITS RUN CONCEALED IN FINISHED AREAS EXCEPT AS SPECIFICALLY SHOWN/NOTED OTHERWISE.
 - INSTALL POWER AND CONTROL WIRING AND REQUIRED CONTROL COMPONENTS FOR AIR CONDITIONING SYSTEMS AS SHOWN/NOTED ON THE DRAWINGS AND PER OTHER APPLICABLE DRAWINGS/INSTRUCTIONS. REFERENCE MECHANICAL DRAWINGS.
 - WIRE SIZE SHALL BE #12 (MINIMUM) UNLESS OTHERWISE NOTED. WIRE SIZES SMALLER THAN #6 AWG SHALL BE THHN/THWN. #6 AWG WIRE AND LARGER SHALL BE THW. UNLESS NOTED OTHERWISE.
 - WIRE (CONDUCTOR) COLORS SHALL BE AS PER APPLICABLE CODES.
 - ALL CONDUCTORS SHALL BE COPPER.
 - ALL CONDUCTORS SHALL BE RUN IN CONDUIT, EXCEPT LOW VOLTAGE CONTROL AND COMMUNICATIONS CABLES.
 - ALL MATERIALS SHALL BE UL APPROVED.
 - ALL BRANCH CIRCUITS TO HAVE A GREEN EQUIPMENT GROUNDING CONDUCTOR SIZED AS PER NEC 250-122.
 - PVC (SCHEDULE 40) PERMITTED BELOW SLAB AND BELOW GRADE ONLY.
 - IT IS INTENDED THAT AN EQUIPMENT GROUND CONDUCTOR (GREEN) SHALL BE RUN IN POWER CIRCUIT CONDUITS WHETHER OR NOT THE CONDUITS IS PVC.
 - ALL EMPTY CONDUITS TO BE PROVIDED WITH NYLON PULL STRING.
 - NEW TYPEWRITTEN PANEL DIRECTORY SHALL BE FURNISHED AFTER JOB IS COMPLETED REFLECTING ALL AS BUILT CONDITIONS.
 - ALL BRANCH CIRCUITS SHALL BE PROPERLY PHASE BALANCED.
 - ALL DATA EQUIPMENT TO BE FED BY A DEDICATED CIRCUIT WHICH CONSISTS OF A POWER CIRCUIT THAT FEEDS THIS TYPE OF EQUIPMENT ONLY WITH A SEPARATE GREEN GROUNDING CONDUCTOR CARRIED ALL THE WAY BACK TO THE PANEL TO BE CONNECTED TO THE GROUNDING SYSTEM.
 - FUSES SHALL BE DUAL ELEMENT, TIME DELAY TYPE UNLESS OTHERWISE NOTED.
 - EC SHALL VERIFY INTERIOR DECOR THEME TO BE USED AND COORDINATE WITH SAID THEME.
 - EC SHALL INSTALL AND CONNECT WIRING TO ALL SIGNS.
 - EC TO COORDINATED ROUGHING-IN TO ALL EQUIPMENT WITH EQUIPMENT SUPPLIER PRIOR TO INSTALLING CONDUITS.
 - ALL CONDUIT RUNS TO KITCHEN EQUIPMENT SHALL BE RUN ABOVE CEILING.
 - MAINTAIN 12" CLEARANCE BETWEEN P.O.S. COMMUNICATION CONDUITS AND LIGHTING FIXTURES AS WELL AS POWER CONDUITS.
 - CUTTING AND NOTCHING OF 2x4 BEARING WALL FRAMING NOT TO EXCEED 7/8" BORING HOLES IN BEARING WALL FRAMING NOT TO EXCEED 3/8" 1/8".

- ELECTRICAL CONTRACTOR (EC) - H.V.A.C.:**
- THE EC SHALL FURNISH AND INSTALL PITCH PANS FOR POWER AND CONTROL WIRING AND TO MAINTAIN 12" MINIMUM CLEARANCE FROM BACK PANEL OF AIR CONDITIONING UNITS.
 - EC SHALL INSTALL ALL LOW-VOLTAGE CONTROL WIRING FOR ALL AIR CONDITIONING UNITS AND FANS. COORDINATE AIR CONDITIONING AND ELECTRICAL PLANS.
 - EC SHALL FURNISH AND INSTALL DISCONNECTS FOR AIR CONDITIONING UNITS.
 - EC SHALL USE A MINIMUM OF 4-6" SEALTITE FLEXIBLE CONDUIT WITH WIRING WHEN HOOD EXHAUST FANS ON ROOF SO THAT FANS MY BE REMOVED FROM CURBS AND PLACED ON ROOF FOR CLEANING EXH. MUST BE WORK.
 - IF REQUIRED BY LOCAL CODE, EC SHALL PROVIDE CONDUITS - ALL SIZE AND VISUAL ANNUNCIATORS AND SINGLE-GANG RECEPTABLES TEST STATIONS WITH GREEN AND RED IDENTIFICATION. EACH KITCHEN UNIT WILL BE EQUIPPED AND THE FIRE AND MECHANICAL INSPECTORS WILL DETERMINE SUITABLE LOCATION FOR TEST STATION. ANNUNCIATORS AND TEST STATION WILL BE LOOPED IN THE CIRCUITRY OF THE SMOKE DETECTION DEVICES. WIRING WILL BE SUPPLIED AND COMPLETED BY THE EC.

- ELECTRICAL CONTRACTOR (EC) - KITCHEN EQUIPMENT:**
- EC TO PROVIDE AND INSTALL RECEPTABLES, CORDS AND CORDS AS REQUIRED. CAPS AND CORDS ARE TO BE INSTALLED ACCORDING TO THE MANUFACTURER'S INSTRUCTION.
 - EC TO CONNECT ELECTRICAL SERVICE DIRECTLY TO EQUIPMENT ACCORDING TO THE MANUFACTURER'S INSTRUCTIONS.
 - EC TO RECONNECT ELECTRICAL CIRCUITS ON PRE-WIRED EQUIPMENT DISASSEMBLED FOR SHIPMENT.
 - WHERE EQUIPMENT IS NOT PRE-WIRED, EC TO CONNECT THE ELECTRICAL SERVICE AND PROVIDE INTER-WIRING AS REQUIRED.
 - WHERE RECEPTABLES ARE PROVIDED WITH THE EQUIPMENT, EC TO PROVIDE AND INSTALL ELECTRICAL SERVICE DOWN FROM ABOVE THROUGH THE SERVICE CHASE PROVIDED WITH THE EQUIPMENT.
 - KITCHEN EQUIPMENT SUPPLIER DRAWINGS INCLUDE ONLY THOSE RECEPTABLES REQUIRED FOR SPECIFIC KITCHEN EQUIPMENT. REFER TO THE ARCHITECTS/ENGINEERS ELECTRICAL DRAWINGS FOR LOCATIONS OF UTILITY AND GENERAL PURPOSE RECEPTABLES.
 - EC TO VERIFY THE UTILITY REQUIREMENTS FOR ITEMS NOT PROVIDED BY THE KITCHEN EQUIPMENT SUPPLIER.
 - ALL PORTIONS OF WORK SHALL BE DONE IN ACCORDANCE WITH APPLICABLE LOCAL, STATE AND NATIONAL CODES, ORDINANCES AND STANDARDS.
 - NOTIFY THE KITCHEN EQUIPMENT SUPPLIER PROJECT MANAGER IMMEDIATELY OF COMPLIANCE WITH A LOCAL, STATE OR NATIONAL CODE IS IN CONFLICT WITH THESE DRAWINGS.

- ELECTRICAL CONTRACTOR (EC) - WALK-IN COOLER/FREEZER:**
- EC TO PROVIDE AND INSTALL A HEATING ELEMENT ON THE COOLER AND FREEZER CONDENSATE DRAIN LINES.
 - EC TO CONNECT THE PRIMARY ELECTRICAL SERVICE TO THE CONDENSING UNITS AND INTER-WIRE TO THE EVAPORATOR COIL(S), CONTROLS, LIGHTING FIXTURES AND DOOR PERIMETER HEATERS.



ROOF POWER PLAN
SCALE: 1/8" = 1'-0"

B1931

DATE	RELEASE
08.26.19	FOR CONSTRUCTION

CHECKED BY: JMJ
DRAWN BY: JMJ

NOTE: THESE DRAWINGS ARE THE PROPERTY OF ARE KOHN ARCHITECTS, P.C. AND SHALL NOT BE USED, REPRODUCED, AND/OR MODIFIED WITHOUT WRITTEN CONSENT FROM ARE KOHN ARCHITECTS, P.C.

DRAWINGS FOR:
**BRUCE DANIELS
CAROLINA RE HOLDINGS, LLC
P.O. BOX 711
GREENWOOD, SC 29649
646-462-5481**

AKA
ARE KOHN ARCHITECTS, PC
74 WOODSTOCK ROAD, ROSWELL, GA. 30075
TEL: (770) 642-9030 FAX: (770) 642-3785
EMAIL: are@akomarch.com



PROJECT: B1931
DATE: 07/22/2019

SC HWY. S-781 & SC HWY. 125
BEECH ISLAND, SC 29642

**BURGER KING
RESTAURANT**
#026-20-03-003

POWER PLAN

**MARSHALL & BOLLWERK
ENGINEERING, INC.**
8881 Highway 92, Suite 400
Woodstock, Ga. 30189
p: (678) 785-0333, f: (678) 325-4559
e: mbe@mbeinc.net