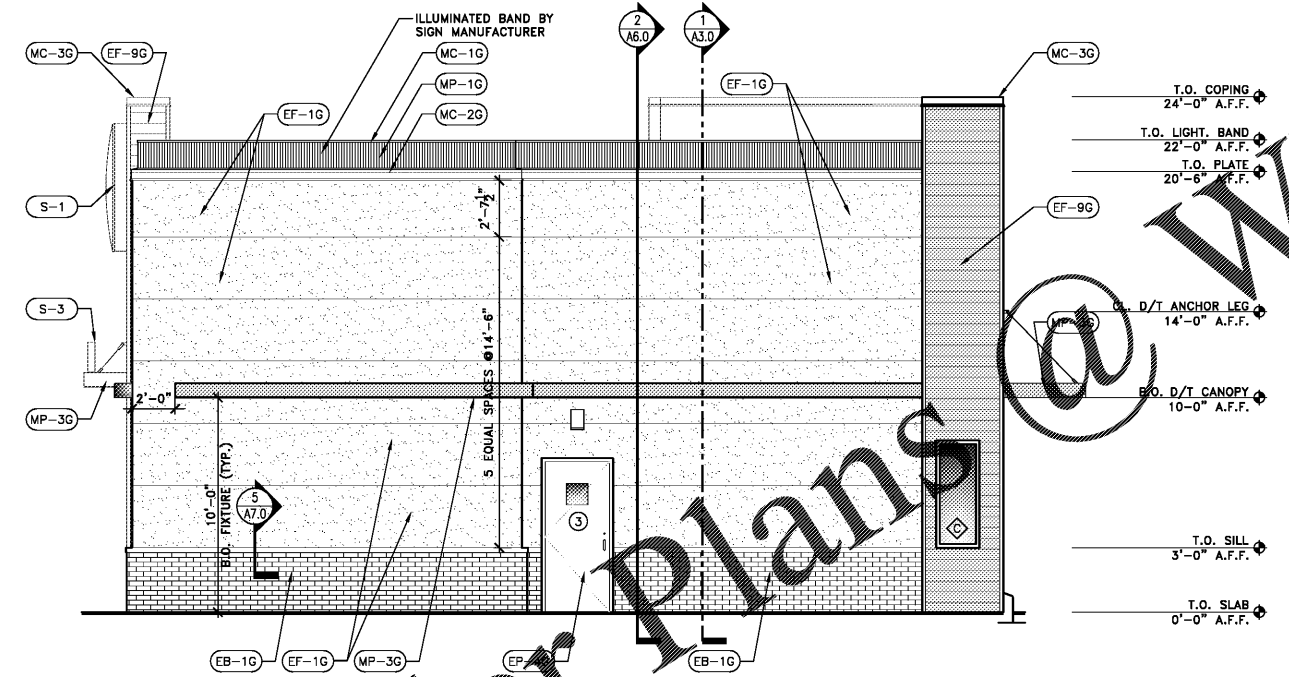
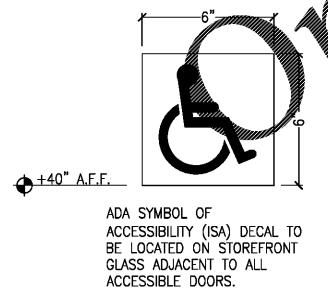


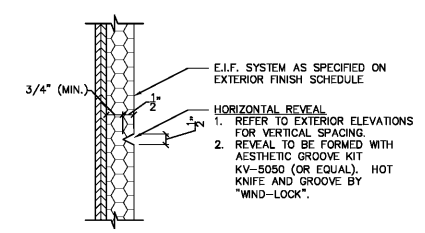
1 DRIVE-THRU ELEVATION (LEFT SIDE)
 SCALE: 1/4" = 1'-0"



2 REAR ELEVATION
 SCALE: 1/4" = 1'-0"



3 WINDOW DECAL
 SCALE: NOT TO SCALE



4 REVEAL DETAIL 'A'
 SCALE: 3" = 1'-0"

STOREFRONT NOTE:
 ALL STOREFRONT SYSTEM TO BE CLEAR ANODIZED ALUMINUM FINISH, INCLUDING FLASHING AND COVERS AS REQUIRED.

TYPE VISION:

OVERALL THICKNESS:	1" INSULATED GLASS
OUTBOARD LITE:	1/4" VEI-2M LOW-E #2 SURFACE TEMPERED
AIR SPACE:	1/2" WITH BLACK SILICONE SEAL
INBOARD LITE:	1/4" CLEAR GLASS

U-FACTOR:
 STOREFRONT = 0.60
 ENTRANCE DOOR = 0.90

SHGC: = 0.25

NOTE TO CANOPY PROVIDER:
 IT IS IMPORTANT TO INSURE THAT THE ACTUAL DIMENSIONS OF THE FLAT CANOPIES SHOULD CONSIDER THE THICKNESS OF ADJACENT SURFACES AFTER FIELD MEASUREMENT PRIOR TO CONSTRUCTION. FOR SIZES OF CANOPY SEE A-7.3

E.I.F.S. SYSTEM SPECIFICATIONS

DESCRIPTION:
 WATER-DRAINAGE & EXTERIOR INSULATION AND FINISH SYSTEM (E.I.F.S.) APPLIED OVER WATER-RESISTIVE COATING OVER SHEATHING. SYSTEM TO BE 1-1/2" THICK, U.N.O. OR AS REQUIRED TO MAINTAIN FLUSH/CONTINUOUS SURFACE.

CLASS PB E.I.F.S.: WITH PHYSICAL PROPERTIES, DRAINAGE, AND STRUCTURAL PERFORMANCE THAT COMPLY WITH ICC-ES AC235

SYSTEM(S):

1. "STO-THERM CLASSIC NEXT E.I.F.S. FINE SAND FINISH" BY STO CORPORATION, PAINTED OR PRE-FINISHED, SEE SHEET A-2.2. G.C. TO PROVIDE & INSTALL PER MANUFACTURER'S SPECIFICATIONS.

NOTE: USE ULTRA HIGH IMPACT SYSTEM FROM FLOOR LEVEL TO 6'-0" A.F.F.

EXTERIOR FINISH LEGEND & NOTES:

- (EB-1G) BRICK FINISH - FULL BRICK / BRICK SILL HEIGHT AND BELOW - COLOR: OLDE HILLSBORO BY EVOLUTION BRICK.
- (EF-1G) NEW E.I.F.S. WITH SCORE REVEAL ABOVE BRICK, PAINTED "TANNERS TAUPE" (LIGHT TAN)
- (EF-9G) EXTERIOR FINISH FIBER CEMENT TOWER AND IMAGE ELEMENTS

TYPICAL METAL BAND (BY MANUFACTURER):

- (MC-1G) TYPICAL LIGHT BAND
- (MC-2G)

COPING CAP COLORS:

- ABOVE (EF-1G) = (MC-1G) W.P. HICKMAN SYSTEMS - A-30 "SILVER SMITH")
- ABOVE (EF-9G) = (MC-3G)

- CANOPIES (MP-3G) - CLEAR ANODIZED (SILVER)
- BOLLARDS (EP-3G) - "AMAZING" MP #04YR 11/537 (RED)
- HANDRAILS, REAR DOOR, FRAME, & EXTERIOR LADDER - (EP-4G) - PAINTED "MONTEREY CLIFFS" (DARK TAN)
- DOWNSPOUTS/VERTICAL TRIM - MATCH ADJACENT SURFACES (EP-4G) (EP-2G) - PAINTED
- (S-1) BACKLIGHTED BURGER KING WALL LOGO SIGN
- (S-3) BURGER KING FREE STANDING LETTER SIGN

WWW.LDILine.com