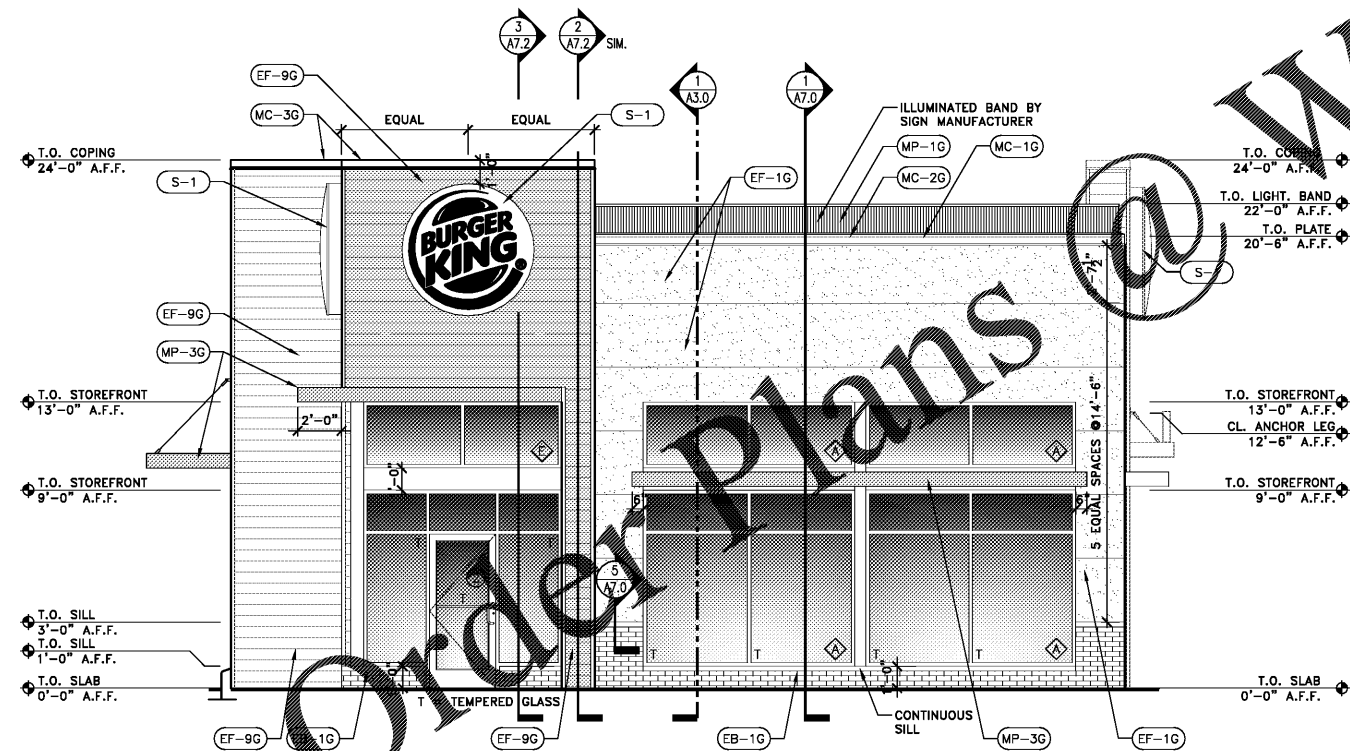


1 MAIN ENTRANCE ELEVATION (RIGHT-SIDE)

SCALE: 1/4" = 1'-0"



2 FRONT ELEVATION

SCALE: 1/4" = 1'-0"

**STOREFRONT NOTE:**

ALL STOREFRONT SYSTEM TO BE CLEAR ANODIZED ALUMINUM FINISH, INCLUDING FLASHING AND COVERS AS REQUIRED.

**TYPE VISION:**

OVERALL THICKNESS: 1" INSULATED GLASS  
 OUTBOARD LITE: 1/4" VEI-2M LOW-E #2 SURFACE TEMPERED  
 AIR SPACE: 1/2" WITH BLACK SILICONE SEAL  
 INBOARD LITE: 1/4" CLEAR GLASS

U-FACTOR: STOREFRONT = 0.60  
 ENTRANCE DOOR = 0.90  
 SHGC = 0.25

**NOTE TO CANOPY PROVIDER:**

IT IS IMPORTANT TO INSURE THAT THE ACTUAL DIMENSIONS OF THE FLAT CANOPIES SHOULD CONSIDER THE THICKNESS OF ADJACENT SURFACES AFTER FIELD MEASUREMENT PRIOR TO CONSTRUCTION. FOR SIZES OF CANOPY SEE A-7.3

**E.I.F.S. SYSTEM SPECIFICATIONS**

**DESCRIPTION:**

WATER-DRAINAGE & EXTERIOR INSULATION AND FINISH SYSTEM (E.I.F.S.) APPLIED OVER WATER-RESISTIVE COATING OVER SHEATHING. SYSTEM TO BE 1-1/2" THICK, U.N.O. OR AS REQUIRED TO MAINTAIN FLUSH/CONTINUOUS SURFACE.  
 CLASS PB E.I.F.S.: WITH PHYSICAL PROPERTIES, DRAINAGE, AND STRUCTURAL PERFORMANCE THAT COMPLY WITH ICC-ES AC235

**SYSTEM(S):**

1. "STO-THERM CLASSIC NEXT E.I.F.S. FINE SAND FINISH" BY STO CORPORATION, PAINTED OR PRE-FINISHED. SEE SHEET A-2.2. G.C. TO PROVIDE & INSTALL PER MANUFACTURER'S SPECIFICATIONS.

NOTE: USE ULTRA HIGH IMPACT SYSTEM FROM FLOOR LEVEL TO 6'-0" A.F.F.

**EXTERIOR FINISH LEGEND & NOTES:**

- (EB-1G) BRICK FINISH - FULL BRICK / BRICK SILL HEIGHT AND BELOW - COLOR: OLDE HILLSBORO BY EVOLUTION BRICK.
- (EF-1G) NEW E.I.F.S. WITH SCORE REVEAL ABOVE BRICK, PAINTED "TANNERS TAUPE" (LIGHT TAN)
- (EF-9G) EXTERIOR FINISH FIBER CEMENT TOWER AND IMAGE ELEMENTS

**TYPICAL METAL BAND (BY MANUFACTURER):**

- (MC-1G) TYPICAL LIGHT BAND
- (MC-2G)

**COPING CAP COLORS:**

- ABOVE (EF-1G) = (MC-1G) W.P. HICKMAN SYSTEMS - A-30 "SILVER SMITH")
- ABOVE (EF-9G) = (MC-3G)

- CANOPIES (MP-3G) - CLEAR ANODIZED (SILVER)
- BOLLARDS (EP-3G) - "AMAZING" MP #04YR 11/537 (RED)
- HANDRAILS, REAR DOOR, FRAME, & EXTERIOR LADDER - (EP-4G) - PAINTED "MONTEREY CLIFFS" (DARK TAN)
- DOWNSPOUTS/VERTICAL TRIIM - MATCH ADJACENT SURFACES (EP-4G) (EP-2G) - PAINTED
- (S-1) BACKLIGHTED BURGER KING WALL LOGO SIGN
- (S-3) BURGER KING FREE STANDING LETTER SIGN

B1931

DATE	RELEASE
08.26.19	FOR CONSTRUCTION

CHECKED BY: AK  
 DRAWN BY: CY

NOTE: THESE DRAWINGS ARE THE PROPERTY OF ARIE KOHN ARCHITECTS, P.C. AND SHALL NOT BE USED, REPRODUCED, AND/OR MODIFIED WITHOUT WRITTEN CONSENT FROM ARIE KOHN ARCHITECTS, P.C.

DRAWINGS FOR:  
 BRUCE DANIELS  
 CAROLINA RE HOLDINGS, LLC  
 P.O. BOX 711  
 GREENWOOD, SC 29649  
 846-462-5481



**ARIE KOHN ARCHITECTS, P.C.**  
 74 WOODSTOCK ROAD ROSWELL, GA 30075  
 TEL: (770) 642-9030 FAX: (770) 642-3785  
 EMAIL: arie@skharch.com



SC HWY. 5-781 & SC HWY. 125  
 BEECH ISLAND, SC 29642  
 PROJECT: B1931  
 DATE: 07/22/2019

**BURGER KING RESTAURANT**  
 #026-20-03-003  
 EXTERIOR ELEVATIONS



A-2.0