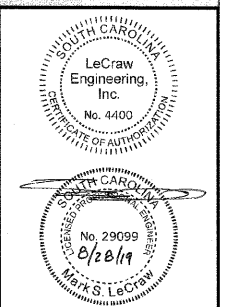


NO.	DATE	BY	REVISION
1			

**CLIENT**  
 CAROLINA RE HOLDINGS, LLC  
 300 GALLERIA PARKWAY - ATLANTA, GA 30339

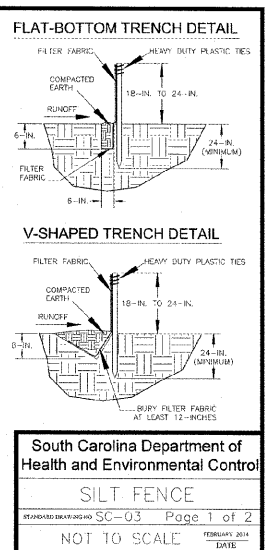
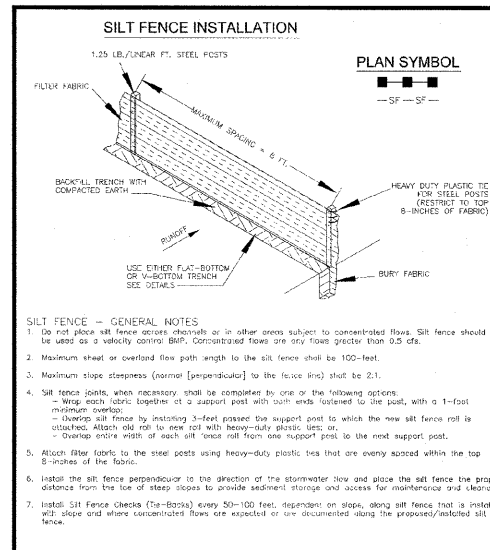
**PROJECT**  
 BURGER KING - BEECH ISLAND, SC  
 BEECH ISLAND AVENUE & ATOMIC DRIVE  
 AIKEN COUNTY, SOUTH CAROLINA



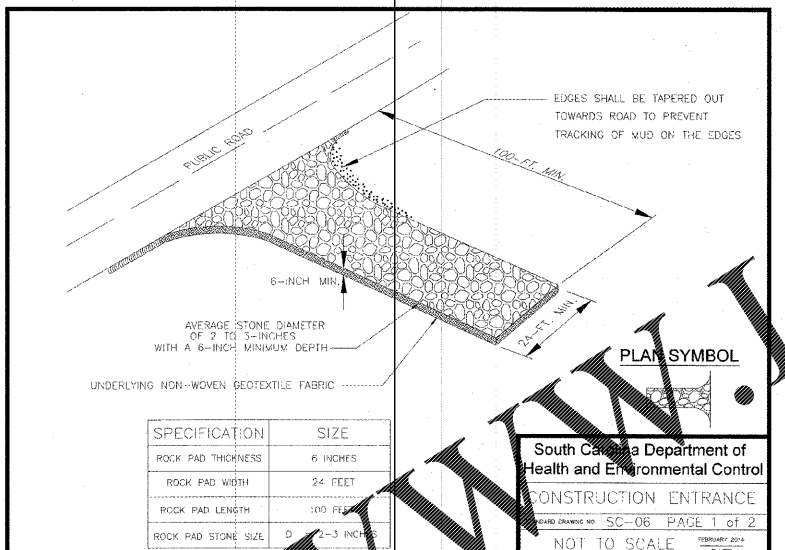
**DESIGN TEAM:**  
 DRAWN BY: MAT  
 DESIGNED BY: MAT  
 REVIEWED BY: MSL

**811**  
 Know what's below.  
 Call before you dig.

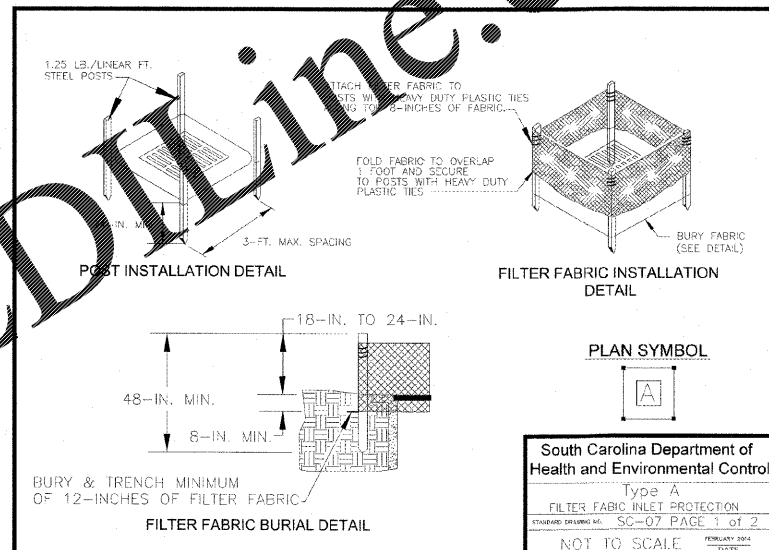
DETAILS ARE NOT  
 DRAWN TO SCALE



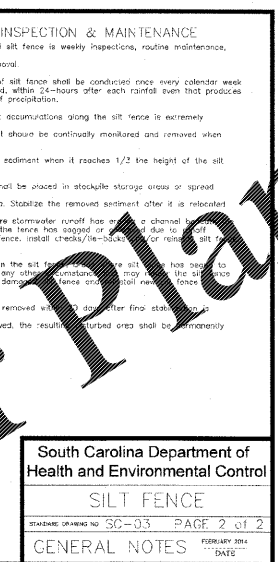
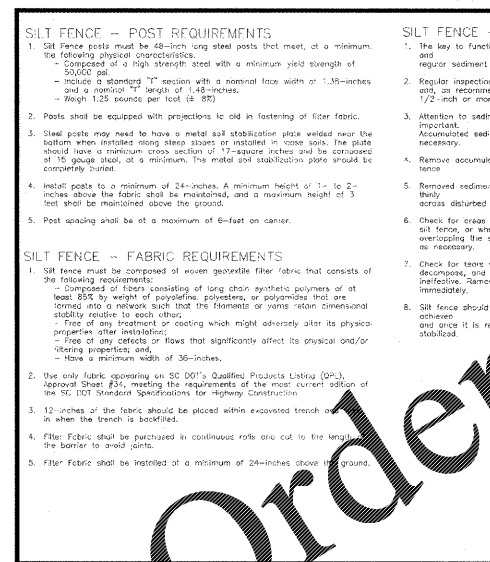
South Carolina Department of  
 Health and Environmental Control  
**SILT FENCE**  
 STANDARD DRAWING NO. SC-03 PAGE 1 of 2  
 FEBRUARY 2014  
 NOT TO SCALE



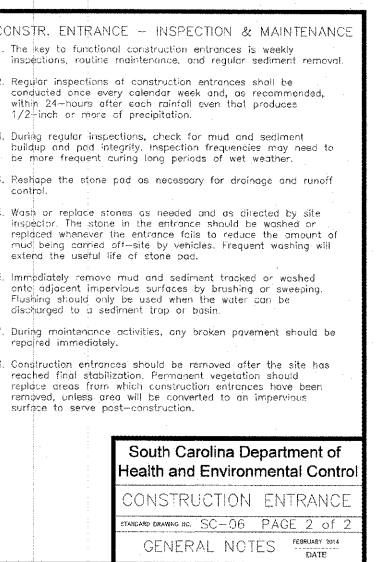
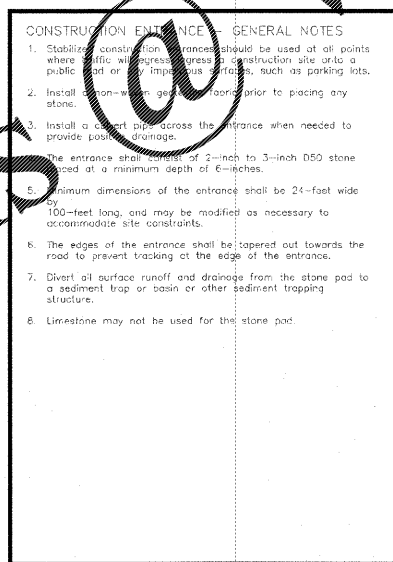
South Carolina Department of  
 Health and Environmental Control  
**CONSTRUCTION ENTRANCE**  
 STANDARD DRAWING NO. SC-06 PAGE 1 of 2  
 FEBRUARY 2014  
 NOT TO SCALE



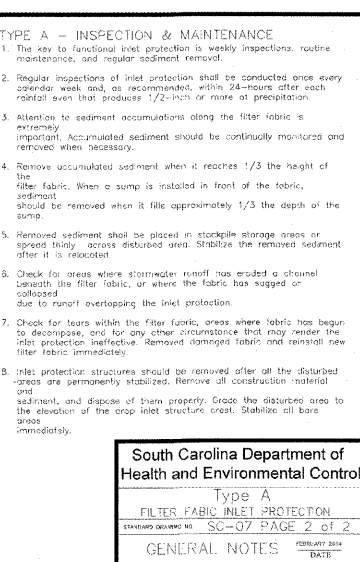
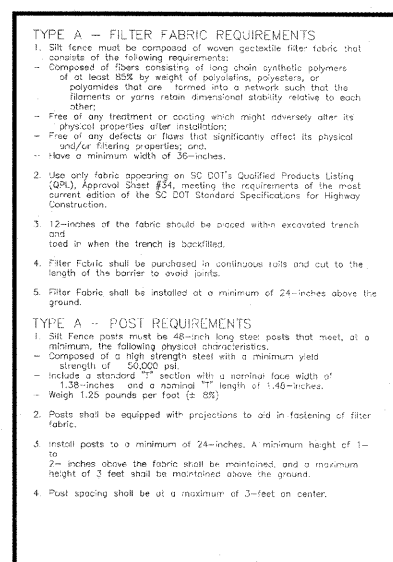
South Carolina Department of  
 Health and Environmental Control  
**Type A  
 FILTER FABRIC INLET PROTECTION**  
 STANDARD DRAWING NO. SC-07 PAGE 1 of 2  
 FEBRUARY 2014  
 NOT TO SCALE



South Carolina Department of  
 Health and Environmental Control  
**SILT FENCE**  
 STANDARD DRAWING NO. SC-03 PAGE 2 of 2  
 FEBRUARY 2014  
 GENERAL NOTES



South Carolina Department of  
 Health and Environmental Control  
**CONSTRUCTION ENTRANCE**  
 STANDARD DRAWING NO. SC-06 PAGE 2 of 2  
 FEBRUARY 2014  
 GENERAL NOTES



South Carolina Department of  
 Health and Environmental Control  
**Type A  
 FILTER FABRIC INLET PROTECTION**  
 STANDARD DRAWING NO. SC-07 PAGE 2 of 2  
 FEBRUARY 2014  
 GENERAL NOTES

Order Plans

WWW.LDOnline.com