

PLUMBING FIXTURE SCHEDULE					
MARK	FIXTURE	MANUFACTURER	MODEL NUMBER	MODEL NAME	VALVE
P-1	WATER CLOSET	AMERICAN STANDARD	2234.015	MADERA	SLOAN ROYAL #110 ZURN #Z6000AV-HET 1.25GPF
P-2	WATER CLOSET - ADA	AMERICAN STANDARD	3043.001	MADERA	SLOAN ROYAL #110 ZURN #Z6000AV-HET 1.25GPF
P-3	URINAL - ADA	AMERICAN STANDARD	6506.011	WASHBROOK	SLOAN ROYAL #186 ZURN #Z6003AV-EWS .50 GPF
P-4	LAVATORIES	COMMERCIAL INTERIORS MANUFACTURING (CIM)	CUSTOM THROUGH SINK	GLACIER WHITE	FAUCET: WATERFRONT MODEL: 300988 SINGLE LEVER HANDLE LAVATORY FAUCET, CHROME-PLATED FINISH
P-5	MOP SINK	CAST IN PLACE			CHICAGO #897-CP -OR- AMERICAN STANDARD #8344.111 -OR- KOHLER #8907
P-6	WATER HEATER	RINNAI -OR- RINNAI	C1991 RUR98I	REU-KBD3237FFUDC-US REU-KBP3237FFUD-US	
P-7	TEMPERING VALVE	WATTS	N170L-M2		
P-8	FLOOR SINK	JOSAM J.R. SMITH ZURN	49300 (49320A AT 3-COMP SINK) 3100 (3111 AT 3-COMP SINK) Z1910 (Z1900 AT 3-COMP SINK)		
P-9	FLOOR DRAIN	JOSAM J.R. SMITH ZURN	30000-50 2010-AP Z-415B-P		
NOTES: 1. COMPARABLE FIXTURES BY AMERICAN STANDARD, ELJER AND KOHLER ARE ACCEPTABLE. 2. TOILET SEATS TO BE CHURCH 9500SSC, KOHLER K-4671-C, OLSONITE #10C OR EQUAL. 3. IN SINGLE USE RESTROOMS ALL FIXTURE MUST BE ADA COMPLIANT.					

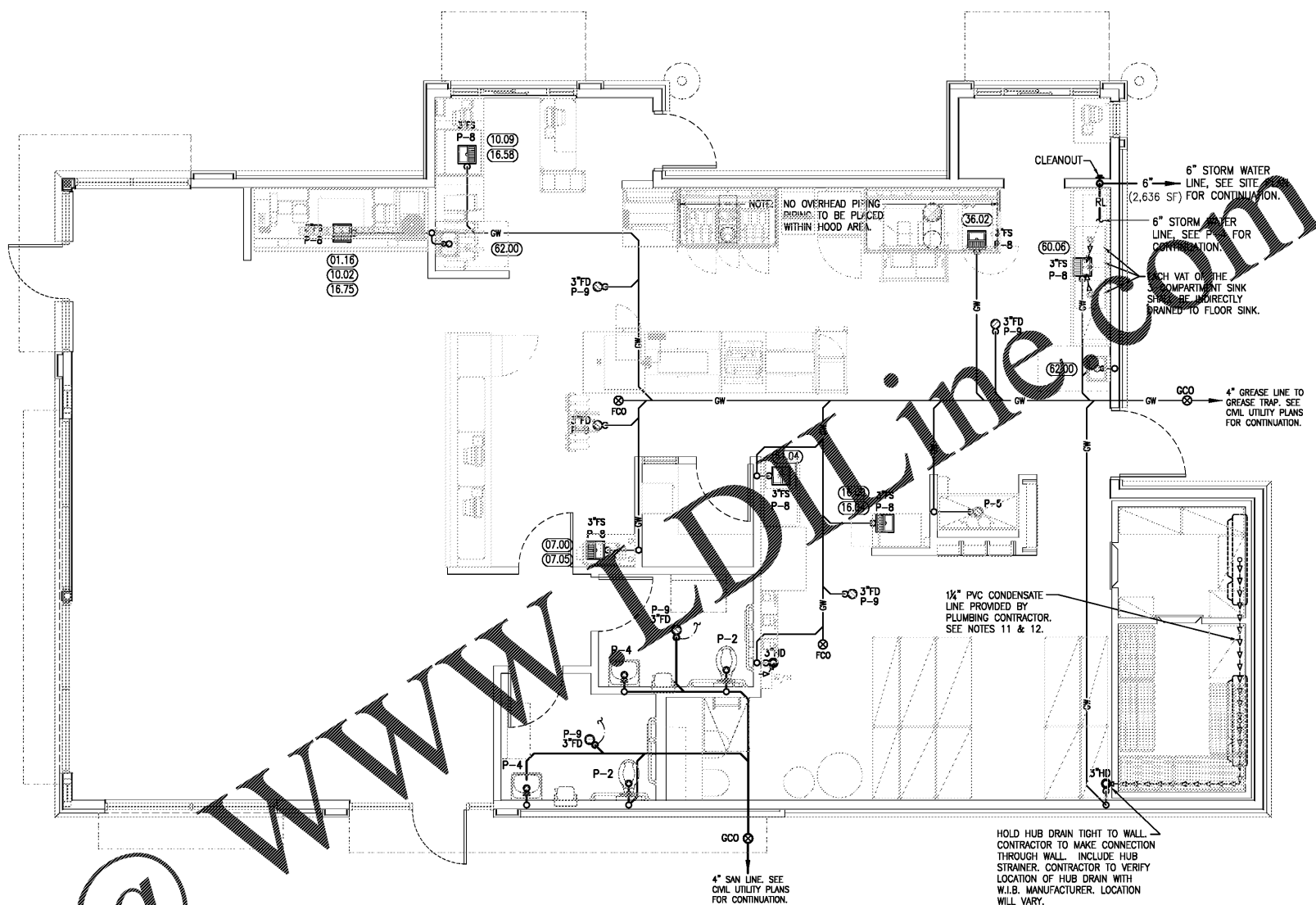
NOTES:

- PLUMBING CONTR. TO COORDINATE VENT STACKS WITH OUTSIDE AIR INTAKES OF A/C UNITS AND SUPPLY FANS & MAINTAIN AT LEAST 10'-0" MIN. CLEARANCE OR AS PER LOCAL CODE REQUIREMENTS. FLAT VENTS ARE NOT ALLOWED.
- INCREASE V.T.R.'S TO SIZE REQUIRED BY LOCAL CODES AND CONDITIONS AS REQUIRED FOR FROST ENCLOSURE. FLAT VENTS ARE NOT ALLOWED.
- RUN SYRUP LINES FROM SODA FACTORY TO DRINK DISPENSER ABOVE CEILING.
- CAST IRON PIPE MAY BE USED UNDER SLAB IN LIEU OF PVC ONLY IF REQUIRED BY CODE.
- PROVIDE CONDENSATE LINES FROM A/C UNITS ABOVE CEILING ACCORDING TO LOCAL CODE REQUIREMENTS.
- RESFAL FLOOR DRAINS ACCORDING TO LOCAL REQUIREMENTS.
- SAFEWASTE PIPING ABOVE AND ALONG FLOOR SHALL BE SIZED IN ACCORDANCE WITH LOCAL CODE REQUIREMENTS.
- COORDINATE SAFEWASTE LINE CONNECTIONS WITH EQUIPMENT ROUGH-IN.
- P.V.C. (SCHEDULE 40) PIPE CAN BE USED FOR VENTS AND WASTE ONLY IF APPROVED BY LOCAL BUILDING CODES. SEE SPECS. FOR ADD'L. INFO.
- SEE FOUNDATION PLAN FOR EXACT LOCATION OF FLOOR DRAINS AND FLOOR SINKS.
- WALK-IN-BOX CONDENSATE LINE. PLUMBING CONTRACTOR SHALL FURNISH AND INSTALL 1/2" CONDENSATE LINE, AND SEAL AROUND ALL PENETRATIONS THROUGH THE WALK-IN-BOX.
- HEAT TAPE IS PROVIDED BY WALK-IN-BOX MANUFACTURER AND INSTALLED BY ELECTRICAL CONTRACTOR. IT IS TO BE SELF-LIMITING TYPE, "TROSTEX" OR EQUAL.

LEGEND

LEGEND MAY CONTAIN ITEMS NOT USED IN THIS BUILDING. CONTRACTOR TO VERIFY.

— GW —	GREASY WASTE LINE
— SW —	SANITARY WASTE LINE
— RL —	RAIN WATER LINE
← ← ← ←	SAFEWASTE PIPING
⊕	F.C.O.- FLOOR CLEANOUT
⊖	F.D.- FLOOR DRAIN
⊙	F.S.- FLOOR SINK
⊗	HUB OR FUNNEL DRAIN
⊘	V.T.R.- VENT THRU-ROOF
⊚	FIXTURE TRAP
⊛	W.C.O.- WALL CLEAN OUT
— V —	VENT PIPING
- - -	1/2" MAP PRIMER PIPING



SANITARY AND GREASE WASTE PLAN

SCALE: 1/4" = 1'-0"

B1914

DATE	RELEASE
08.28.19	FOR CONSTRUCTION

CHECKED BY:
DRAWN BY:

NOTE:
THESE DRAWINGS ARE THE PROPERTY OF ARIE KOHN ARCHITECTS, P.C. AND SHALL NOT BE USED, REPRODUCED, AND/OR MODIFIED WITHOUT WRITTEN CONSENT FROM ARIE KOHN ARCHITECTS, P.C.

DRAWINGS FOR:
BRUCE DANIELS
CAROLINA RE HOLDINGS, LLC
P.O. BOX 711
GREENWOOD, SC 29649
646-462-5481



AKA
ARIE KOHN ARCHITECTS, PC
74 WOODSTOCK ROAD, ROSWELL, GA 30075
TEL: (770) 642-9030 FAX: (770) 642-3785
EMAIL: arie@akomarch.com



PROJECT: B1914
DATE: 07/22/2019
BURGER KING RESTAURANT
#08-0008-021-00-00
WASTE & VENT FLOOR PLAN, SCHEDULE & LEGEND

MARSHALL & BOLLWERK ENGINEERING, INC.
6661 Highway 92, Suite 400
Woodstock, Ga, 30189
p: (678) 795-0333, f: (678) 325-4558
e: mbe@mbeinc.net