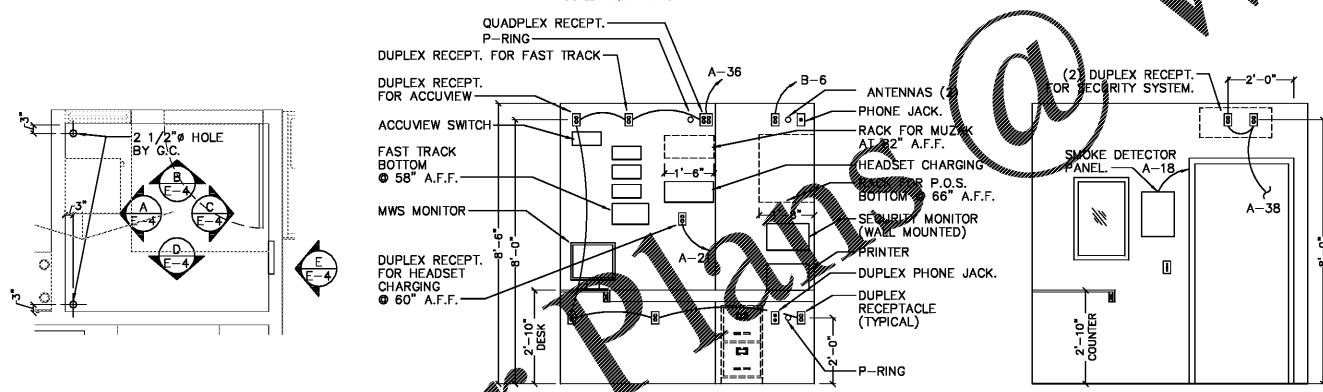
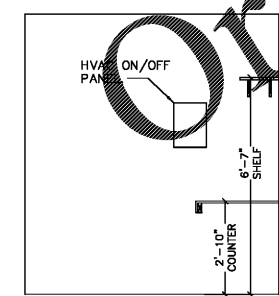


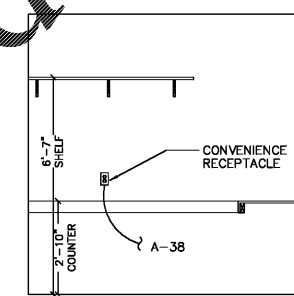
**TECHNOLOGY PLAN**  
SCALE: 1/4" = 1'-0"



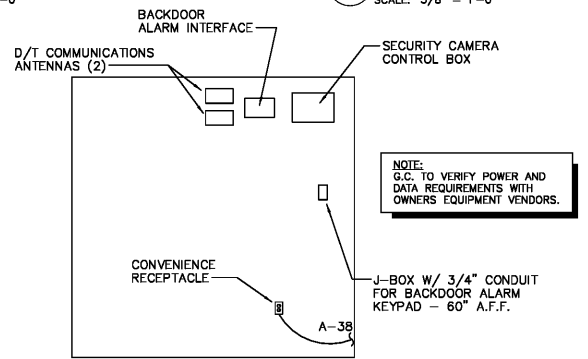
**OFFICE PLAN**  
SCALE: 3/8" = 1'-0"



**C ELEVATION**  
SCALE: 3/8" = 1'-0"



**D ELEVATION**  
SCALE: 3/8" = 1'-0"



**E ELEVATION**  
SCALE: 3/8" = 1'-0"

**GENERAL NOTES:**

- A. CONTRACTOR TO VERIFY WHICH SYSTEM IS TO BE INSTALLED. REQUIREMENTS CAN VARY DEPENDING ON MANUFACTURER. THE CONTRACTOR IS CAUTIONED TO VERIFY ALL REQUIREMENTS PRIOR TO CONSTRUCTION.
- B. CONTRACTOR TO PROVIDE ALL RECEPTABLE OUTLETS, CONDUITS AND J-BOXES AS INDICATED ON PLAN.
- C. CONTRACTOR TO VERIFY AND COORDINATE LOCATION OF VIDEO DISPLAY DEVICES W/ BURGER KING REPRESENTATIVE.
- D. MAINTAIN P.O.S. CABLES A MIN. OF 12" AWAY FROM ANY FLUORESCENT LIGHT SOURCES ABOVE CEILING.
- E. ELECTRICAL CONTRACTOR TO IDENTIFY P.O.S. JUNCTION BOXES ABOVE CEILING "GROUND P.O.S. ONLY".

**KEYED PLAN NOTES:**

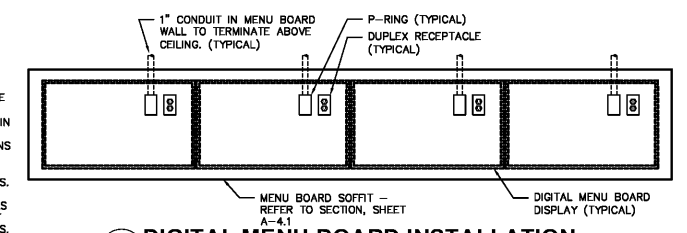
- 1 DISPLAY #1 AND BUMP BAR. PROVIDE 4" CONDUIT FOR VIDEO, BUMP BAR AND PRINTERS. PROVIDE CEILING MOUNTED RECEPTABLES. (TYPICAL FOR DISPLAY #1, #2 AND #3)
- 2 DISPLAY #2 AND BUMP BAR
- 3 DISPLAY #3 AND BUMP BAR
- 4 STOCK LEVEL LIGHT CONTROLLER @ 60" A.F.F.
- 5 TOTAL SERVICE TIME DISPLAY
- 6 GRADE DISPLAY
- 7 CLOCK-RECEPT. IN CHASE
- 8 STOCK LEVEL DISPLAY RECEPT. IN CHASE
- 9 EQUIPMENT MOUNTED RECEPTABLES BY K.E.S. CIRCUITING RUNS BY E.C.
- 10 J-BOX W/ 3/4" CONDUIT @ 84" A.F.F.
- 11 CEILING MOUNTED D/T TIMER WINDOW RE DISPLAY
- 12 90" A.F.F. FOR D/T LAND MONITOR
- 13 P-RING @ 24" A.F.F. W/ 1" CONDUIT TO ABOVE CLG.
- 14 J-BOX @ 41" CONDUIT TO CLG. FOR PHU DATA CABLE. (LOCATED NEXT TO PHU RECEPT.)
- 15 SECURITY CAMERA (TYPICAL)
- 16 SECURITY MONITOR (TYPICAL)

**SYMBOL LEGEND**

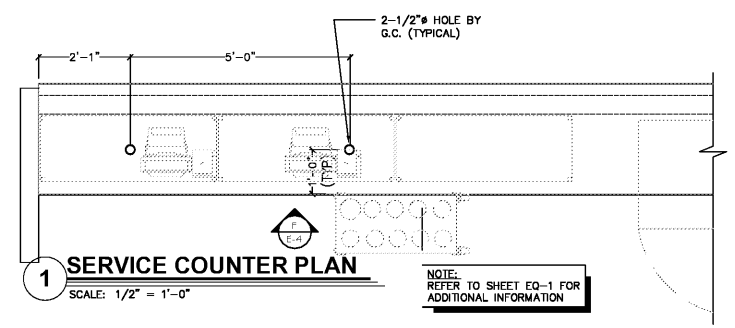
DETAIL	DESCRIPTION
⊕	DUPLEX 125V-20A-2 POLE-3 WIRE STRAIGHT BLADE RECEPTABLE OUTLET - WALL MTD. (24" A.F.F. - U.O.N.)
⊙	SINGLE 125V-20A-2 POLE-3 WIRE STRAIGHT BLADE RECEPTABLE OUTLET - WALL MTD. (24" A.F.F. - U.O.N.)
1	DRYWALL P-RING
B	BUMP-BAR
▽	TELEPHONE OUTLET FOR P.O.S. MODEM (ALL OUTLETS HOMERUN IN 3/4" CONDUIT TO TELEPHONE BACKBOARD) MOUNTED @ 90" A.F.F.
⊠	P.O.S. PRINTER DEVICE
⊞	P.O.S. REGISTER DEVICE
D	VIDEO DISPLAY DEVICE (CEILING MTD.)
■	SECURITY CAMERA BY "PRIVID-EYE" CONTACT: LARRY SATTLER, 954-581-1756
⊞	SECURITY MONITOR BY "PRIVID-EYE" P.O.S. DUPLEX RECEPTABLE @ 84" A.F.F. (VERIFY) CONNECT TO P.O.S. CIRCUIT

**NOTES:**

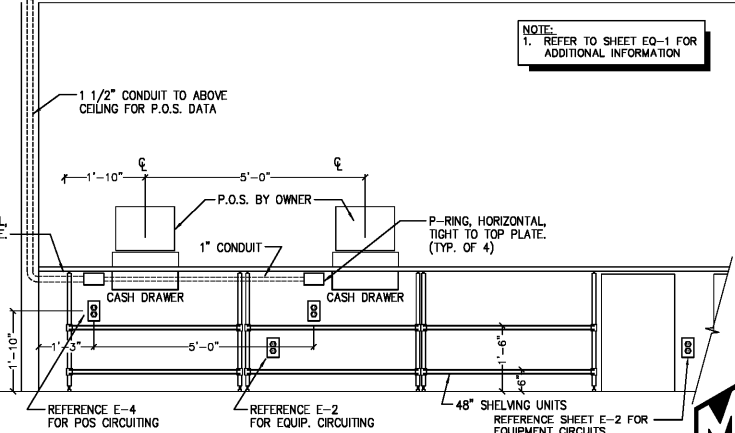
- 1. (1) DUPLEX RECEPTABLE PER SCREEN
- 2. (1) P-RING PER SCREEN WITH 1" CONDUIT TO ABOVE CEILING. DATA CABLE TO RUN TO MEDIA PLAYER(S) IN OFFICE
- 3. VERIFY NUMBER OF SCREENS USED (3 OR 4) PRIOR TO INSTALLATION OF RECEPTABLES AND P-RINGS.
- 4. DETERMINE SCREEN AND MOUNTING BRACKET MODELS PRIOR TO INSTALLATION OF RECEPTABLES AND P-RINGS. REFER TO SHEET E-2, POWER PLAN FOR CIRCUITING REQUIREMENTS.



**2 DIGITAL MENU BOARD INSTALLATION**  
SCALE: 1/2" = 1'-0"



**1 SERVICE COUNTER PLAN**  
SCALE: 1/2" = 1'-0"



**F KITCHEN SIDE COUNTER ELEVATION**  
SCALE: 1/2" = 1'-0"

**MARSHALL & BOLLWERK ENGINEERING, INC.**  
8881 Highway 92, Suite 400  
Woodstock, Ga. 30189  
p: (678) 785-0333, f: (678) 325-4559  
e: mbe@mbeinc.net

**B1914**

DATE	RELEASE
08.26.19	FOR CONSTRUCTION

CHECKED BY: JMJ  
DRAWN BY: JMJ

NOTE: THESE DRAWINGS ARE THE PROPERTY OF ARIE KOHN ARCHITECTS, P.C. AND SHALL NOT BE USED, REPRODUCED, AND/OR MODIFIED WITHOUT WRITTEN CONSENT FROM ARIE KOHN ARCHITECTS, P.C.

DRAWINGS FOR:  
**BRUCE DANIELS HOLDINGS, LLC**  
CAROLINA RE HOLDINGS, LLC  
P.O. BOX 711  
GREENWOOD, SC 29649  
646-462-5481

**AKA ARIE KOHN ARCHITECTS, PC**  
74 WOODSTOCK ROAD, ROSWELL, GA. 30075  
TEL: (770) 642-9030 FAX: (770) 642-3785  
EMAIL: arie@akohmarch.com

**SOUTH CAROLINA PROFESSIONAL SEAL**  
MICHAEL JONES  
07/21/19

PROJECT: B1914  
DATE: 07/22/2019  
405 & 408 EAST MAIN ST.  
ANDREWS, SC 29510

**BURGER KING RESTAURANT**  
#06-0006-021-00-00

**TECHNOLOGY PLAN**

**E-4**