

DATE	RELEASE
08.26.19	FOR CONSTRUCTION

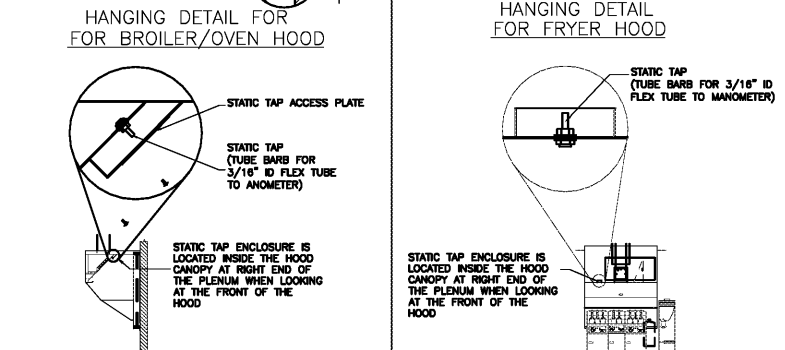
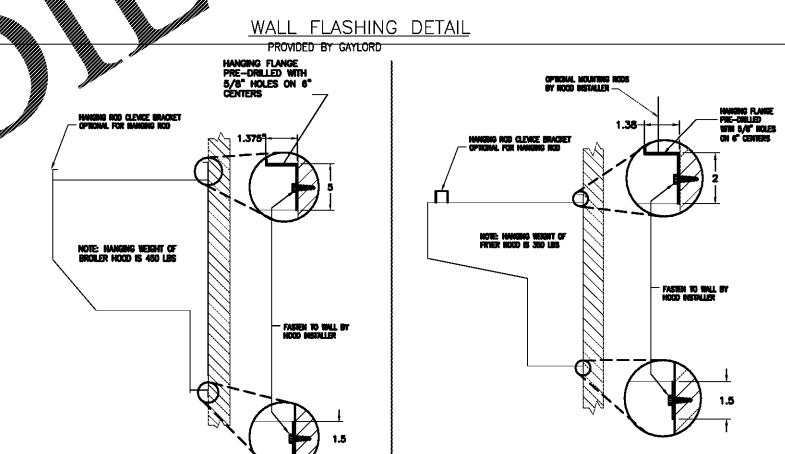
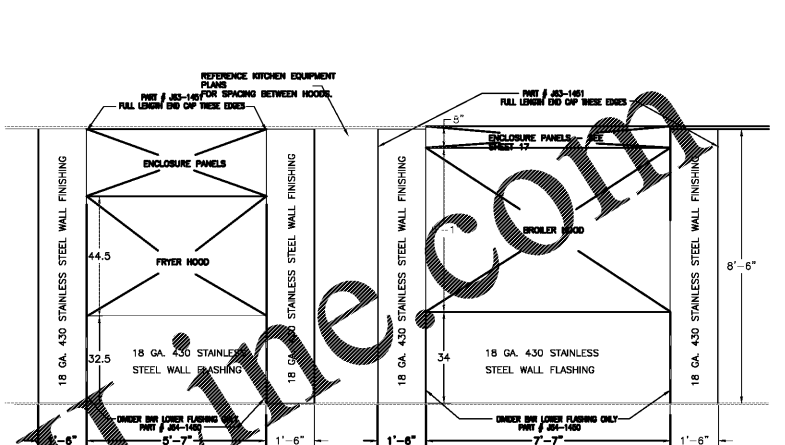
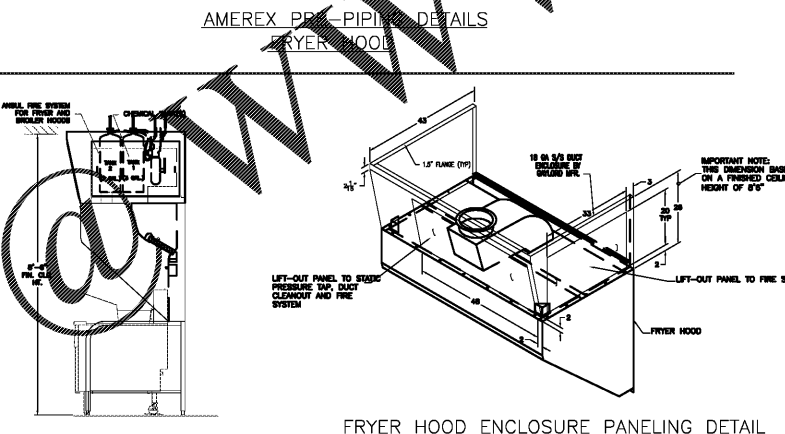
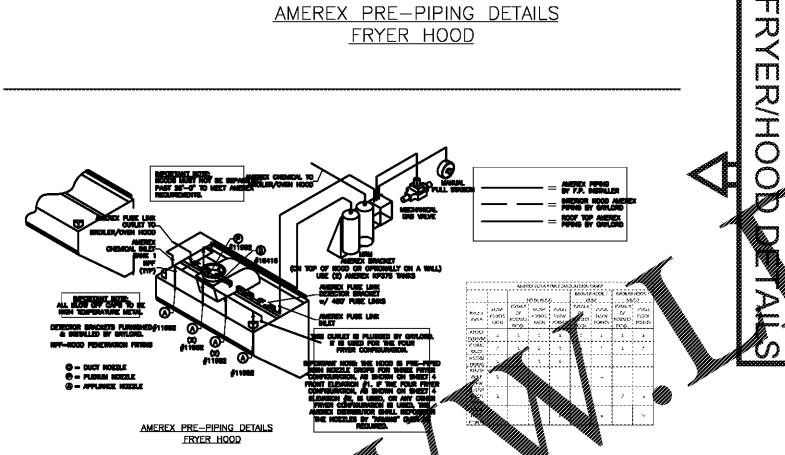
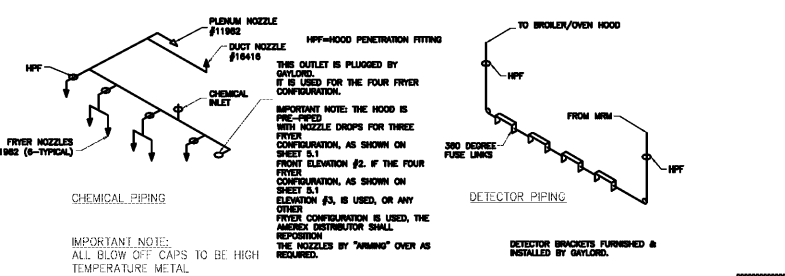
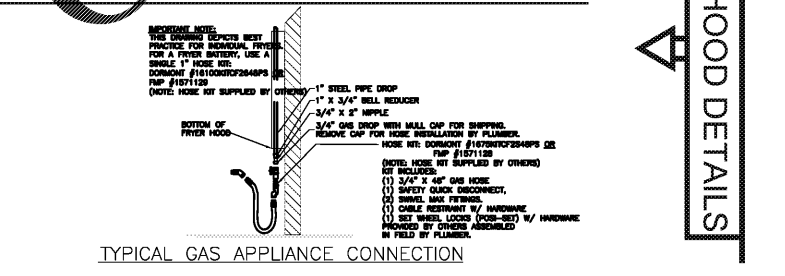
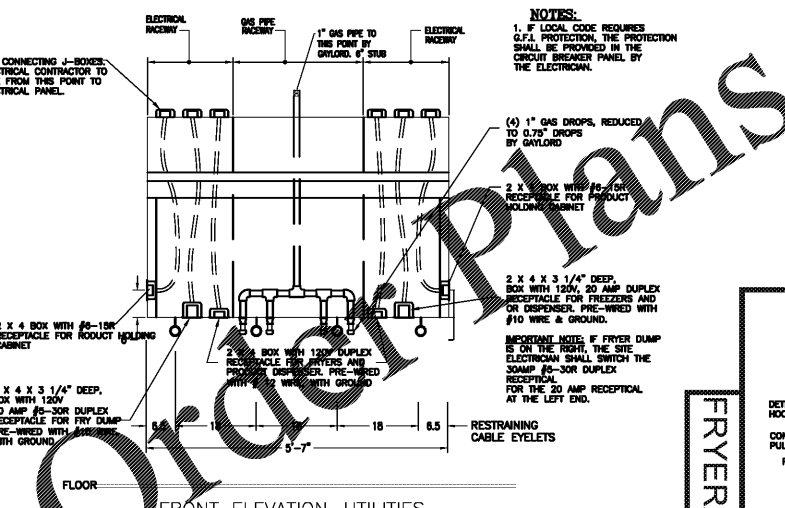
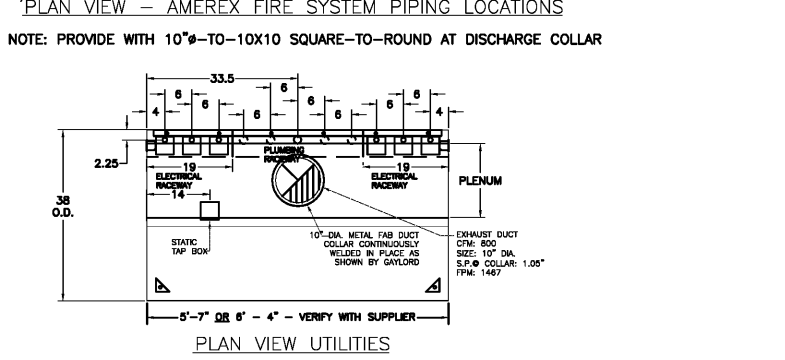
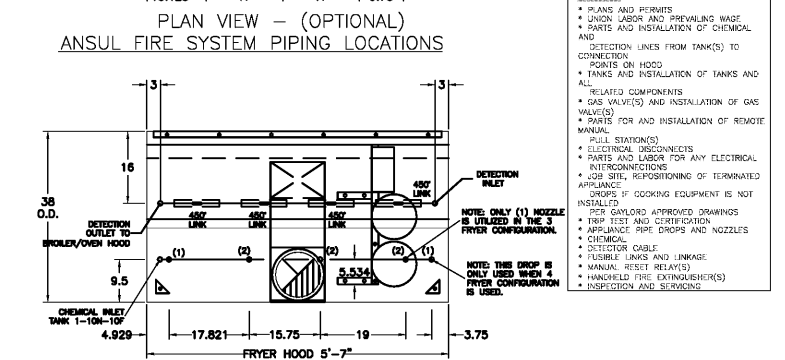
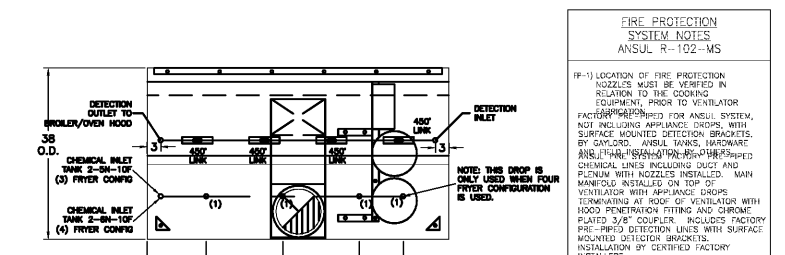
CHECKED BY: AK
DRAWN BY: CY

NOTE:
THESE DRAWINGS ARE THE PROPERTY OF ARE Kohn Architects, P.C. AND SHALL NOT BE USED, REPRODUCED, AND/OR MODIFIED WITHOUT WRITTEN CONSENT FROM ARE Kohn Architects, P.C.

N - C - A
CONSULTANTS / GROUP
4585 140TH AVE. NORTH, SUITE #1001
CLEARWATER, FLORIDA
PHONE: (877) 530-0078
CALL NCA MARKETING FOR PRICING
NCA JOB# 19937

DRAWING INFORMATION

DATE	DESCRIPTION	BY
08-01-19	FOR CONSTRUCTION	KM



PROCEDURE TO CONFIRM HOOD EXHAUST VOLUME

BK ROC Hood / Ex Fan / Fire System / HVAC Control Matrix as of 10-14-09

Action	Ex Fan	Electric Fan to Cooking Equip.	Mech. Gas Valve	HVAC Units	Make up air unit (if applicable)	Comments
Fan start turned on	On	On	On	On	On	Note: HVAC Units must be on before ex fan can come on
Fan stop turned off	Off	Off	On	On	Off	
Fire system discharges	On	Off	Off	Off	Off	
Stopping fan belt	On	Off	On	On	Off	Fan to cooking equip. off via current sensor
Broiler fan belt	On	Off	On	On	Off	Fan to cooking equip. off via current sensor
Power outage	Off	Off	On	Off	Off	
HVAC system turned off	Off	Off	On	Off	Off	

DRAWINGS FOR:
BRUCE DANIELS CAROLINA FRANCHISE HOLDINGS, LLC
P.O. BOX 711
GREENWOOD, SC 29648

AKA
ARIE KOHN ARCHITECTS, P.C.
74 WOODSTOCK ROAD, ROSWELL, GA. 30075
TEL: (770) 642-9030 FAX: (770) 642-3755
EMAIL: arie@akohrarch.com

BURGER KING

SHANE HAMILTON, P.E.
912 W. MLK BLVD. TAMPA, FL SOUTH CAROLINA LIC #35544

PROJECT B1914
DATE: 07/22/2019

406 & 408 EAST MAIN ST.
ANDREWS, SC 29510

BURGER KING RESTAURANT
#06-0008-021-00-00
HOOD DETAILS