

DATE	RELEASE
08.26.19	FOR CONSTRUCTION

N-C-A

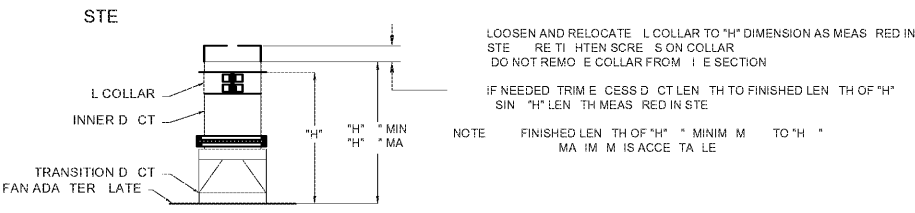
CONSULTANTS / GROUP

4585 140TH AVE. NORTH, SUITE #1001
CLEARWATER, FLORIDA
PHONE: (877) 530-0078
CALL NCA MARKETING FOR PRICING
NCA JOB# 19937

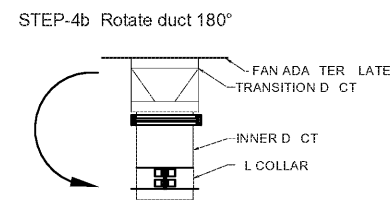
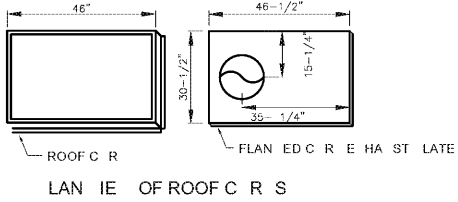
DRAWING INFORMATION		
DATE	DESCRIPTION	BY
08-01-19	FOR CONSTRUCTION	KM

A COORDINATE WITH THE LATEST FITCHENER'S PLANS PRIOR TO INSTALLATION OF CURTAIN FRITZ GENERAL CONTRACTOR MAR AND L M O THE LOCATION OF THE ROOF PEN FROM FLOOR TO DEC

C PLACE ROOF PEN DIMENSION LINES AND ROOF PEN REAR PLAN ARRANGES LINES ON CURTAIN FROM FLOOR TO PEN IN DEC



THE CONTRACTOR SHALL NOT DISASSEMBLE THE EXHAUST FAN TO RECONFIGURE THE EXHAUST DISCHARGE



IPIC-3G Factory-Made Grease Duct Installation Instructions Specific for Burger King Restaurant Installation (Forward Discharge Assembly)

Note: These instructions have been developed in coordination for use with kitchen exhaust hood manufactured by Gaylord, H&K, and Frank.

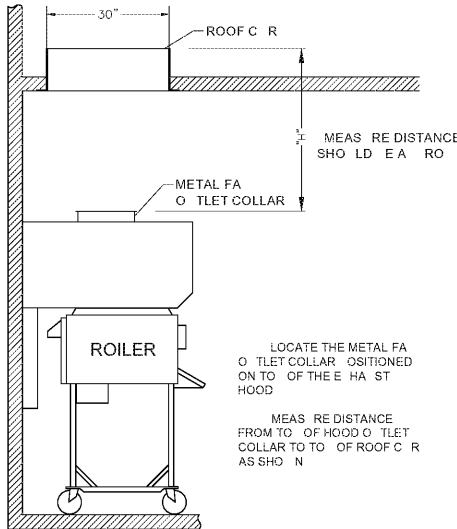
GENERAL INFORMATION

Metal-Fab Model IPIC-3G Grease Duct is "Listed" by Underwriters Laboratories for kitchen exhaust duct application for continuous operation at 500° F and intermittent operation at 2000° F. IPIC-3G is further "Classified" by Underwriters Laboratories as equivalent to a 2-hr. fire rated grease duct enclosure as per UL 222 test standard and listed for 7-to 8 inch clearance to combustibles for sizes up to and including 24-inch inside diameter.

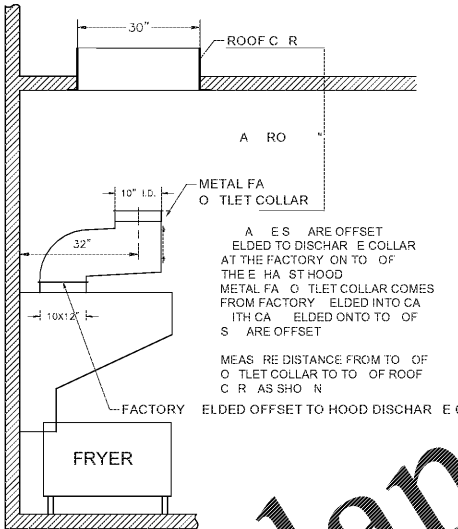
During installation, field application of factory-supplied insulation must be installed at joints on a variable length / adjustable length components. Do not substitute insulation with other makes or brands. Upon completion of installation, 2 layers of 1.5-inch insulation (supplied by manufacturer) must be applied directly around the inner duct as described in these instructions in order to maintain the 7-to 8 inch clearance to combustibles rating as per the manufacturer's UL listing.

FOR QUESTIONS CALL METAL-FAB @ 1-800-835-2830 X 4165

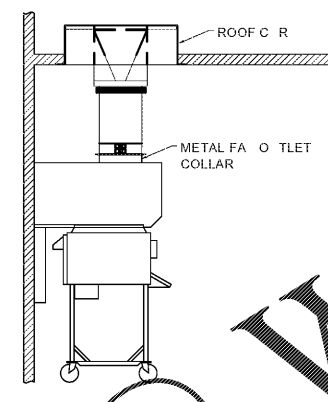
STE ROILER HOOD



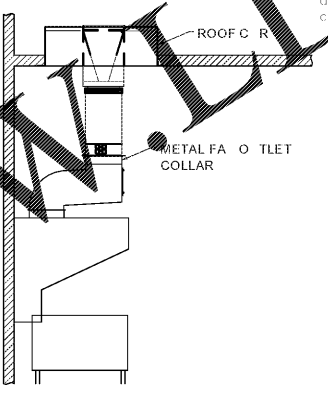
STE FRYER HOOD



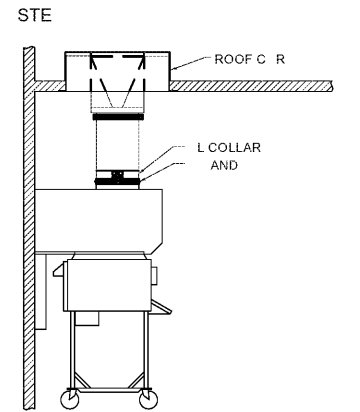
STE ROILER



STE FRYER



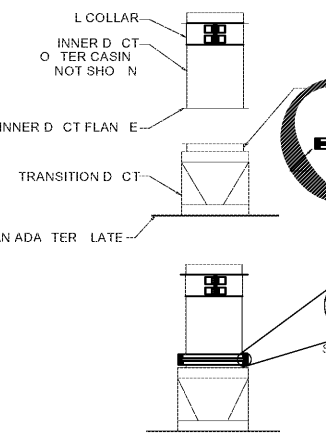
NOTE ALL REMAINING INSTRUCTIONS PERTAIN TO BOTH ROILER EXHAUST HOOD AND FRYER EXHAUST HOOD AS IN STEP 4



APPLY A BEAD OF SEALANT TO HOOD AND CLAMP AND ATTACH TO HOOD AS SHOWN REF TO STEP 4

TIGHTEN SCREWS ON L COLLAR FOR MORE POSITIVE SEAL APPLY SEALANT TO L COLLAR SLOT AND FLARED END OF COLLAR PRIOR TO TIGHTENING SCREWS

STE



REMOVE THE OUTER CASING INSULATION FROM THE AREA LEAVING LENGTH OF DUCT ON CURTAIN FIT TO BE SEATED LATER

PLACE THE "TRANSITION DUCT/FAN ADAPTER LATE" SIDE DOWN ON THE ROOF/FAN ADAPTER LATE TO SEAT PROPERLY

APPLY BEAD OF SEALANT TO IDENTIFIED FLANGE

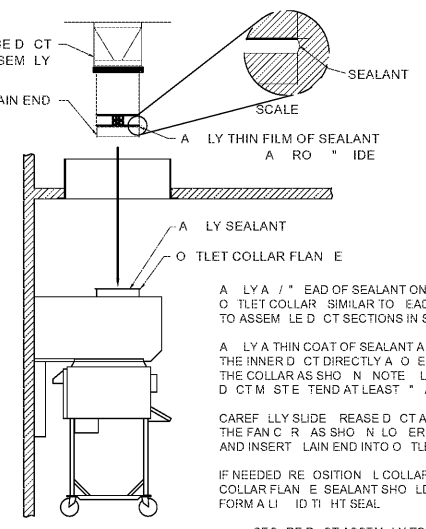
APPLY SEALANT TO INSIDE EDGE OF FLANGE AND THE INSULATION IS SEATED TO CLAMP INNER DUCT FLANGES TO EACH OTHER

SET INNER DUCT FLANGE ON TRANSITION DUCT FLANGE

ATTACH THE CLAMP AND CLAMP OVER THE INNER DUCT FLANGES

NOTE: WHEN ATTACHING CLAMP AND SEALER Mallet OR OTHER TO AID IN ASSEMBLY TIGHTEN CLAMP AND CLAMP SINK DRIVER SCREWS TO IDENTIFIED TO COMPLETE ALIGNMENT

STE



APPLY A BEAD OF SEALANT TO THE FLANGE OF THE HOOD DISCHARGE COLLAR SIMILAR TO BEAD OF SEALANT SET TO ASSEMBLY DETAIL SECTIONS IN STEP 4

APPLY A THIN COAT OF SEALANT TO IDENTIFIED ON THE INNER DUCT DIRECTLY ABOVE THE FLANGE OF THE COLLAR AS SHOWN NOTE LAIN END OF THE INNER DUCT MUST TEND AT LEAST 1/2" FROM THE HOOD DISCHARGE COLLAR

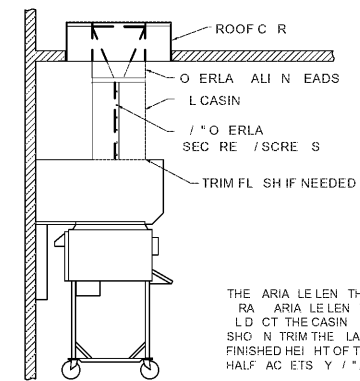
CAREFULLY SLIDE REAR DISCHARGE ASSEMBLY THROUGH THE FAN CURB AS SHOWN LOOSELY INTO HOOD AND INSERT LAIN END INTO HOOD DISCHARGE COLLAR OF HOOD

IF NEEDED REPOSITION L COLLAR AGAINST HOOD DISCHARGE COLLAR FLANGE SEALANT SHOULD BE COMPRESSED TO FORM A TIGHT SEAL

REAR DISCHARGE ASSEMBLY TO FAN CURB SINCE TECH SCREWS NOT LINED IMPORTANT: RECTANGULAR PLATE OF DUCT ASSEMBLY MUST BE EVENLY CENTERED OVER FAN CURB. BEFORE SECURING TO FAN CURB, VERIFY THAT OUTER SURFACE OF GREASE DUCT MAINTAINS A MINIMUM 1-INCH CLEARANCE TO COMBUSTIBLE MATERIALS.

6. HVAC CONTRACTOR SHALL PROVIDE AND INSTALL HIGH TEMP SEALANT OR GASKET TO THE OUTER PERIMETER OF THE GREASE FLANGE.

STE



THE AREA LENGTH OF L CASING IS MADE OF HALF ACETS (RA) AREA LENGTH L CASING COMPLETELY AROUND THE INSULATED DUCT THE CASING SHOULD BE EVENLY LAPPED TOGETHER TO COVER ALL SEAMS AND TRIM THE LAIN END OF L CASING AS NEEDED TO FIT THE FINISHED HEIGHT OF THE AREA LENGTH OF GRLA SEAMS OF THE HALF ACETS Y / Y AND SEC RE SIN SCREWS SHOULD BE

© Copyright 2019- Drawings, specifications, notes, database, computer files, field data, and reports as instruments of service prepared by the Design of Record. As instruments of services, these items remain the property of the Design of Record, who shall retain all statutory and other reserved rights, including the copyright thereto. Any use, reproduction or changes to these documents without written consent of NCA Consultants is a violation of federal copyright laws.



AKA
ARIE KOHN ARCHITECTS, P.C.
74 WOODSTOCK ROAD, ROSWELL, GA. 30075
TEL: (770) 642-8030 FAX: (770) 642-3755
EMAIL: arie@akohrnarch.com

SHANE HAMILTON, P.E.
912 W. MLK BLVD, TAMPA, FL
SOUTH-CENTRAL DISTRICT #35544

PROJECT: B1914
DATE: 07/22/2019

BURGER KING RESTAURANT
#06-0008-021-00-00
HOOD DUCT INSTALLATION DETAILS