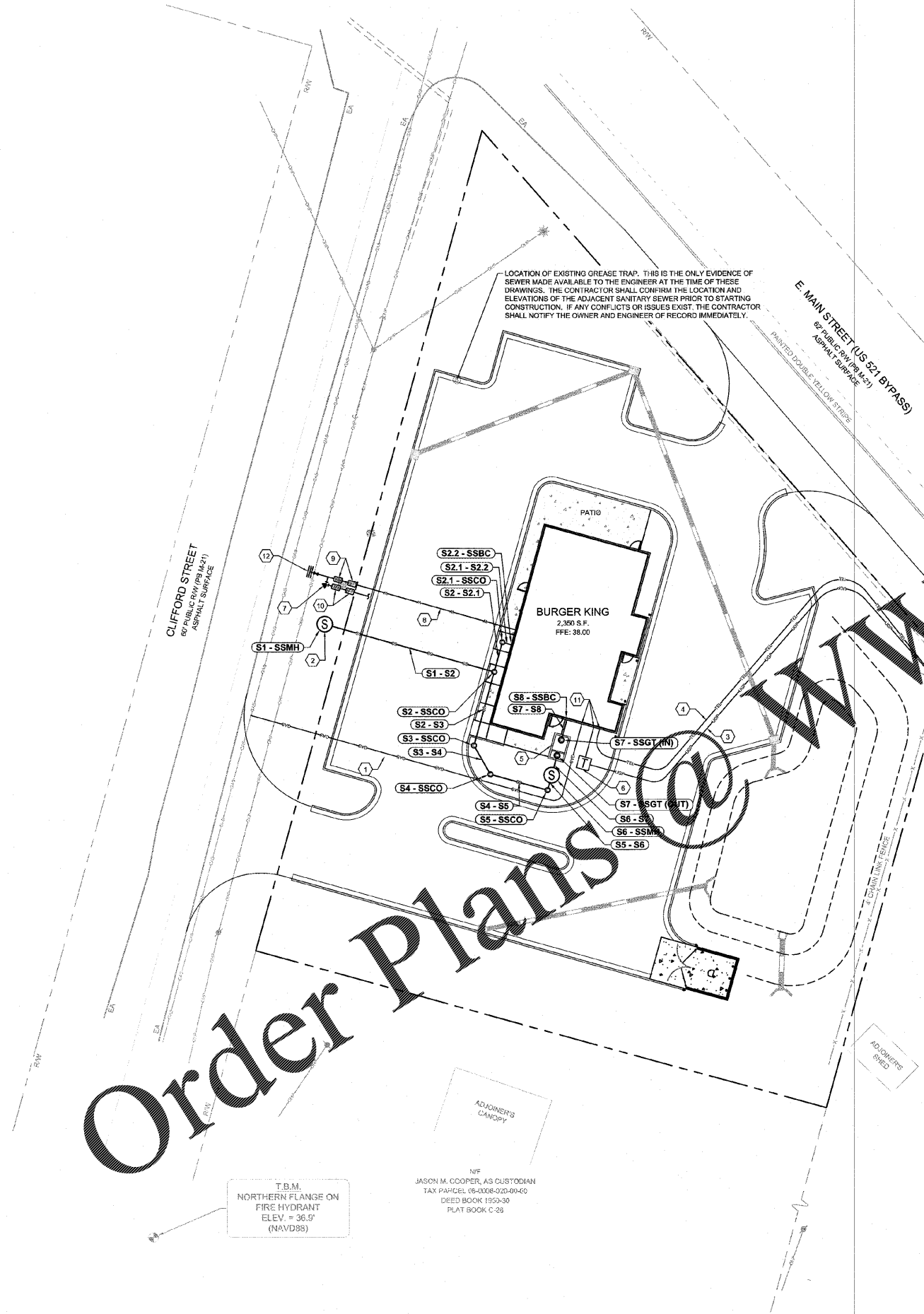


Drawn name: L230325 - Carolina RE Holdings, LLC - Burger King - Andrews, SC DDCADDCONSTR259005 - 05 - UTILITY.dwg UTILITY PLAN Aug 28, 2016 1:27pm by: michael.boehmer

Order Plans

WWW.LDILine.com



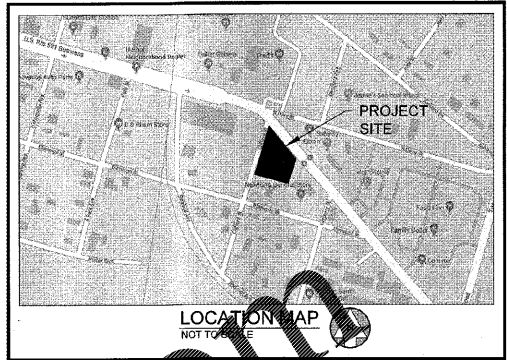
LOCATION OF EXISTING GREASE TRAP. THIS IS THE ONLY EVIDENCE OF SEWER MADE AVAILABLE TO THE ENGINEER AT THE TIME OF THESE DRAWINGS. THE CONTRACTOR SHALL CONFIRM THE LOCATION AND ELEVATIONS OF THE ADJACENT SANITARY SEWER PRIOR TO STARTING CONSTRUCTION. IF ANY CONFLICTS OR ISSUES EXIST, THE CONTRACTOR SHALL NOTIFY THE OWNER AND ENGINEER OF RECORD IMMEDIATELY.

CONTRACTOR TO ENSURE THERE ARE NOT IMPACTS TO EXISTING GUY WIRE DURING CONSTRUCTION

N/F
NEWTON'S GENERAL STORE OF ANDREWS, LLC
TAX PARCEL 06-0008-022-00-00
DEED BOOK: 29993-75
LOT E
PLAT BOOK M-21

N/F
JASON M. COOPER, AS CUSTODIAN
TAX PARCEL 06-0008-020-00-00
DEED BOOK 1950-30
PLAT BOOK C-23

T.B.M.
NORTHERN FLANGE ON
FIRE HYDRANT
ELEV. = 36.9'
(NAVD85)



- GENERAL NOTES:**
- CONTRACTOR TO NOTIFY THE DEVELOPER AND ENGINEER IMMEDIATELY IF FIELD CONDITIONS DIFFER FROM DESIGN ASSUMPTIONS.
 - LOCATION OF UNDERGROUND UTILITIES SHOWN IS BASED ON A SURVEY BY BARRETT SURVEYING GROUP LLC, DATED MAY 30, 2019. APPROPRIATE UTILITY COMPANIES SHOULD BE CONTACTED FOR VERIFICATION OF LOCATIONS PRIOR TO ANY CONSTRUCTION ACTIVITY.
 - MAINTAIN 10' HORIZONTAL SEPARATION BETWEEN WATER AND SEWER LINES.
 - REFER TO ARCH/MEP PLANS FOR ON SITE UTILITY CONDUITS FOR SITE LIGHTING, ETC. AND UTILITY ENTRY AND EXIT LOCATIONS.
 - VERTICAL DEPTH OF ALL DRY AND PRESSURIZED UTILITIES IS UNKNOWN. CONTRACTOR TO NOTIFY OWNER AND ENGINEER IMMEDIATELY IF ANY CONFLICTS ARE FOUND.
 - CONTRACTOR TO REFERENCE MEP PLANS FOR ALL GREASE TRAP SIZING, DETAILS, CLEANOUTS, SAMPLE WELLS, AND VENT PIPING. GREASE TRAPS SHOWN ON CIVIL DRAWINGS ARE FOR REFERENCE ONLY.

KEY NOTES

1	UNDERGROUND GAS SERVICE. CONTRACTOR TO COORDINATE WITH UTILITY PROVIDER FOR EXACT LOCATION AND CONTINUATION
2	APPROXIMATE LOCATION OF PROPOSED DOG-HOUSE MANHOLE CONNECTION TO EXISTING SEWER MAIN. HORIZONTAL AND VERTICAL LOCATION OF EXISTING SEWER MAIN IS UNKNOWN AND WILL NEED TO BE VERIFIED PRIOR TO CONSTRUCTION.
3	UNDERGROUND POWER SERVICE. CONTRACTOR TO COORDINATE WITH UTILITY PROVIDER FOR EXACT LOCATION AND CONTINUATION.
4	UNDERGROUND TELEPHONE SERVICE. CONTRACTOR TO COORDINATE WITH UTILITY PROVIDER FOR EXACT LOCATION AND CONTINUATION.
5	1,500 GALLON GREASE TRAP. SEE MEP PLANS FOR DETAILS.
6	PROPOSED TRANSFORMER PER UTILITY PROVIDER SPECIFICATIONS.
7	90° BEND WITH THRUST BLOCK.
8	2" PVC DOMESTIC WATER LINE.
9	2" DOMESTIC WATER METER AND BACKFLOW PREVENTER.
10	1" IRRIGATION WATER METER AND BACKFLOW PREVENTER.
11	REFER TO ARCH PLANS FOR ALL LOCATIONS AND INTERNAL CONNECTIONS.
12	PROPOSED 8"x8" TAPPING SLEEVE AND GATE VALVE. CONTRACTOR TO CONFIRM SIZE OF EXISTING LINE, SIZE AND LOCATION OF EXISTING WATER MAIN IS UNKNOWN AND WILL NEED TO BE VERIFIED PRIOR TO CONSTRUCTION.

CAUTION
THE UTILITIES SHOWN ARE SHOWN FOR THE CONTRACTORS CONVENIENCE ONLY. THERE MAY BE OTHER UTILITIES NOT SHOWN ON THESE PLANS. THE ENGINEER ASSUMES NO RESPONSIBILITY FOR THE LOCATIONS OF UNDERGROUND UTILITIES, AND IT SHALL BE THE CONTRACTORS RESPONSIBILITY TO VERIFY THE LOCATIONS OF ALL UTILITIES SHOWN AS WELL AS THOSE NOT SHOWN WITHIN THE CONSTRUCTION LIMITS. ALL DAMAGE MADE TO EXISTING UTILITIES BY THE CONTRACTOR SHALL BE THE RESPONSIBILITY OF THE CONTRACTOR.

SANITARY STRUCTURES

NAME	TYPE	STATION	RIM	INV IN: (PIPE)	INV OUT: (PIPE)
S1 - SSMH	MANHOLE	0+00.00	34.26	31.33 (S1 - S2)	
S2 - SSCO	CLEANOUT	0+56.71	37.66	31.89 (S2 - S3) 31.89 (S2 - S2.1)	31.89 (S1 - S2)
S2.1 - SSCO	CLEANOUT	0+09.98	37.70	32.39 (S2.1 - S2.2)	32.39 (S2 - S2.1)
S2.2 - SSBC	BUILDING CONNECTION	0+12.98	37.73		32.54 (S2.1 - S2.2)
S3 - SSCO	CLEANOUT	0+81.36	38.00	32.14 (S3 - S4)	32.14 (S2 - S3)
S4 - SSCO	CLEANOUT	0+91.96	37.70	32.25 (S4 - S5)	32.25 (S3 - S4)
S5 - SSCO	CLEANOUT	1+11.13	37.77	32.44 (S5 - S6)	32.44 (S4 - S5)
S6 - SSMH	MANHOLE (TEST)	1+16.13	37.81	32.68 (S6 - S7)	32.49 (S5 - S6)
S7 - SSGT (IN)	GREASE TRAP	1+27.88	37.93	32.93 (S7 - S8)	
S7 - SSGT (OUT)	GREASE TRAP	1+22.71	37.88		32.75 (S6 - S7)
S8 - SSBC	BUILDING CONNECTION	1+34.63	38.00		33.00 (S7 - S8)

SANITARY PIPES

NAME	SIZE	LENGTH	SLOPE	INV UP	INV DOWN	MATERIAL
S1 - S2	4"	56.71	1.00%	31.89 (S2 - SSCO)	31.33 (S1 - SSMH)	PVC
S2 - S2.1	4"	9.98	5.00%	32.39 (S2.1 - SSCO)	31.89 (S2 - SSCO)	PVC
S2 - S3	4"	24.65	1.00%	32.14 (S3 - SSCO)	31.89 (S2 - SSCO)	PVC
S2.1 - S2.2	4"	3.00	5.00%	32.54 (S2.2 - SSBC)	32.39 (S2.1 - SSCO)	PVC
S3 - S4	4"	10.61	1.00%	32.25 (S4 - SSCO)	32.14 (S3 - SSCO)	PVC
S4 - S5	4"	18.16	1.00%	32.44 (S5 - SSCO)	32.25 (S4 - SSCO)	PVC
S5 - S6	4"	5.00	1.00%	32.49 (S6 - SSMH)	32.44 (S5 - SSCO)	PVC
S6 - S7	4"	6.58	1.00%	32.75 (S7 - SSGT (OUT))	32.68 (S6 - SSMH)	PVC
S7 - S8	4"	6.75	1.00%	33.00 (S8 - SSBC)	32.93 (S7 - SSGT (IN))	PVC

LECRAW ENGINEERING
© 2019 LECRAW ENGINEERING, INC.
3475 COLLETT DRIVE
SUITE 100
DULUTH, GA 30096
PHONE: 770.441.0288
WWW.LECRAWENGINEERING.COM

CLIENT: CAROLINA RE HOLDINGS, LLC
300 GALLERIA PARKWAY - ATLANTA, GA 30339
PROJECT: BURGER KING - ANDREWS, SC
406 & 408 EAST MAIN STREET
PARCEL # 06-0008-021-00-00
ANDREWS, GEORGETOWN COUNTY, SOUTH CAROLINA

DESIGN TEAM:
DRAWN BY: MAT
DESIGNED BY: MAT
REVIEWED BY: MSL

811
Know what's below.
Call before you dig.

SCALE & NORTH ARROW:
NORTH ARROW
SCALE: 1"=20'

JOB #: 259005
DATE: JULY 30, 2019
UTILITY PLAN
C-5.0