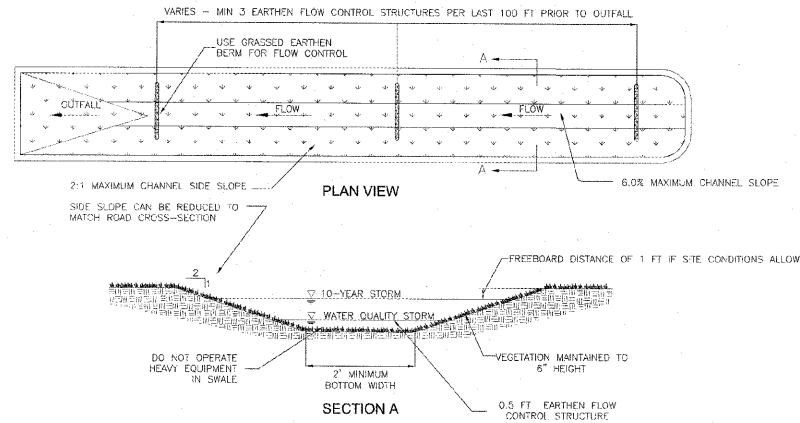


REFERENCES
S.C. DEPT. OF TRANSPORTATION
REGIONAL SEDIMENT BASIN SPECIFICATION

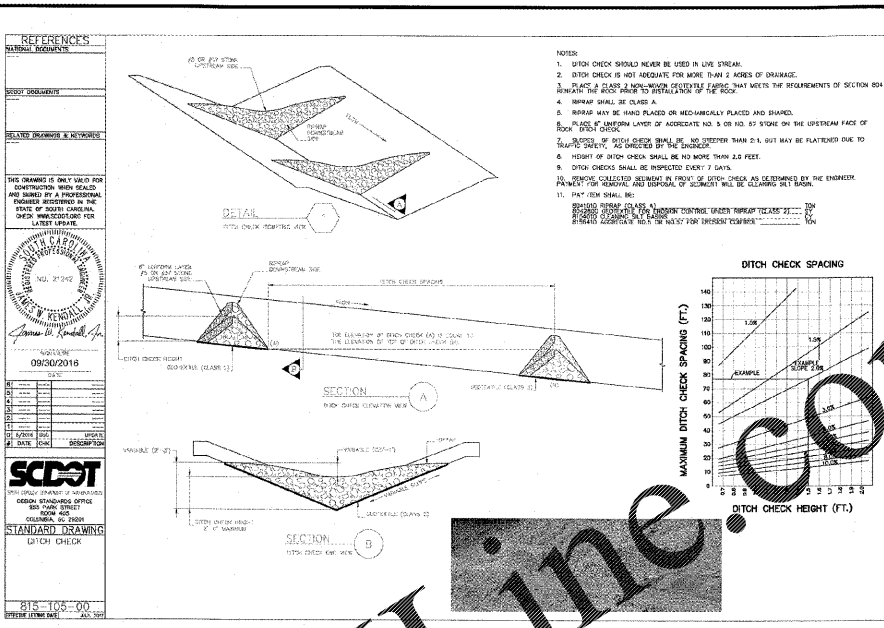
NO. 21242

SCDOT
STANDARD DRAWING
SEDIMENT CONTROL STRUCTURE AND BASIN

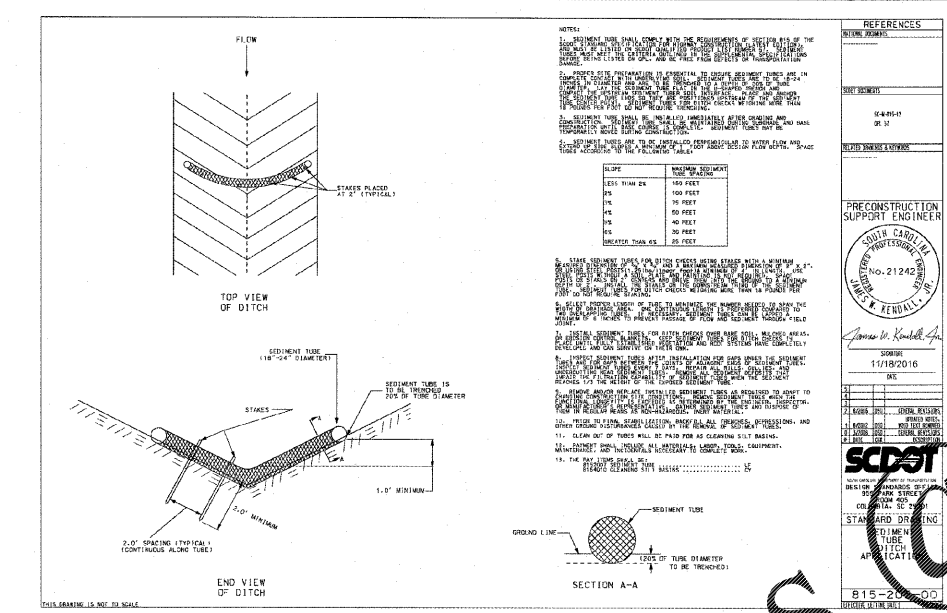
815-305-01



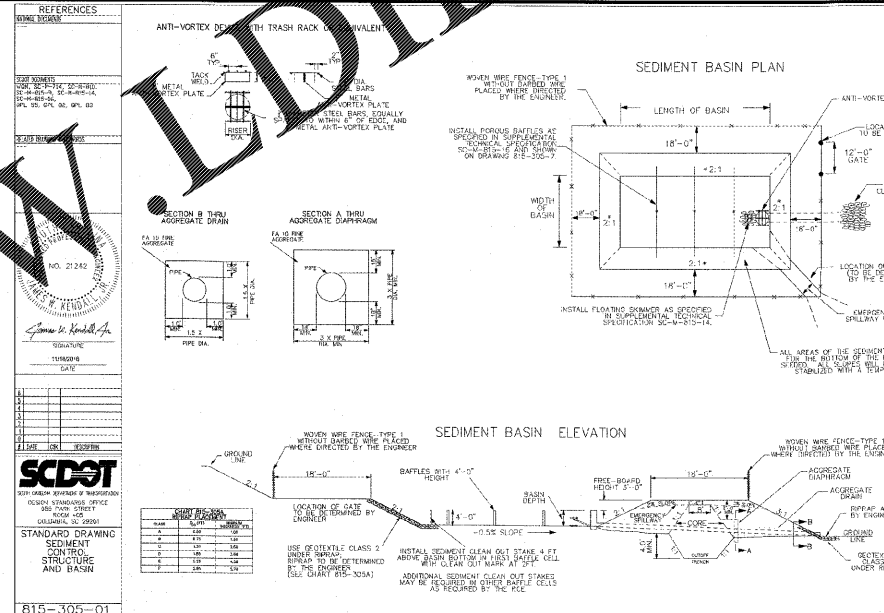
NOTES:
1. GRASSED CHANNELS AND SWALES WILL BE DESIGNED IN ACCORDANCE WITH THE SCDOT WATER QUALITY MANUAL.
2. 1 FOOT OF FREEBOARD SHALL BE PROVIDED ABOVE THE 10-YEAR STORM IF SITE CONDITIONS ALLOW.
3. V-SHAPED DITCHES SHALL NOT BE USED AS GRASSED CHANNELS AND SWALES FOR WATER QUALITY.
4. THE STANDARD APPLICATION FOR WATER QUALITY APPLIES ONLY TO THE LAST 100 FEET OF GRASSED CHANNELS AND SWALES PRIOR TO OUTFALL AND DOES NOT INCLUDE THE ENTIRE CONVEYANCE.
5. PAY ITEMS FOR PERMANENT AND TEMPORARY SEEDING FOR CHANNEL AND SWALE STABILIZATION ARE PROVIDED IN SUPPLEMENTAL SPECIFICATION SC-M-810-4 OR MOST RECENT VERSION.
6. THE PAY ITEM SHALL BE:
2031000 UNCLASSIFIED EXCAVATION CY



SCDOT DETAIL NOT TO SCALE



SCDOT DETAIL NOT TO SCALE



SCDOT DETAIL NOT TO SCALE

South Carolina Department of Transportation
Regional Sediment Basin Specification

Figure 1

Graph A-1 Required Basin Volume at Top of Basin - Lower State Basins

Graph A-2 Required Surface Area at Top of Basin - Lower State Basins

SECTOR	SECTOR AREA (ACRES)	SECTOR PERIMETER (FEET)	SECTOR VOLUME (CU YD)	SECTOR SURFACE AREA (SQ FT)	SECTOR PERIMETER (FEET)	SECTOR VOLUME (CU YD)	SECTOR SURFACE AREA (SQ FT)
1	1.0	100	100	100	100	100	100
2	2.0	200	200	200	200	200	200
3	3.0	300	300	300	300	300	300
4	4.0	400	400	400	400	400	400
5	5.0	500	500	500	500	500	500

SCDOT
STANDARD DRAWING
SEDIMENT CONTROL STRUCTURE AND BASIN

815-305-01

SCDOT DETAIL NOT TO SCALE

REFERENCES
S.C. DEPT. OF TRANSPORTATION
REGIONAL SEDIMENT BASIN SPECIFICATION

NO. 21242

SCDOT
STANDARD DRAWING
SEDIMENT CONTROL STRUCTURE AND BASIN

815-305-01

REFERENCES
S.C. DEPT. OF TRANSPORTATION
REGIONAL SEDIMENT BASIN SPECIFICATION

NO. 21242

SCDOT
STANDARD DRAWING
SEDIMENT CONTROL STRUCTURE AND BASIN

815-305-01

REFERENCES
S.C. DEPT. OF TRANSPORTATION
REGIONAL SEDIMENT BASIN SPECIFICATION

NO. 21242

SCDOT
STANDARD DRAWING
SEDIMENT CONTROL STRUCTURE AND BASIN

815-305-01

SCDOT DETAIL NOT TO SCALE

LECRAW ENGINEERING, INC.
3475 COLLETT ROAD
SUITE A
DULUTH, GA 30096
PHONE - (770) 546-8100
FAX - (770) 441-0298
WWW.LECRAWENGINEERING.COM
GCA - 440

CAROLINA RE HOLDINGS, LLC
300 GALLERIA PARKWAY - ATLANTA, GA 30339

BURGER KING - ANDREWS, SC
406 & 408 EAST MAIN STREET
PARCEL # 06-0008-021-00-00
ANDREWS, GEORGETOWN COUNTY, SOUTH CAROLINA

LeCraw Engineering, Inc.
No. 4400

DESIGN TEAM:
DRAWN BY: MAT
DESIGNED BY: MAT
REVIEWED BY: MSL

811
Know what's below.
Call before you dig.

DETAILS ARE NOT DRAWN TO SCALE

JOB #: 259005
DATE: JULY 30, 2019
EROSION CONTROL DETAILS - 2
C-2.4