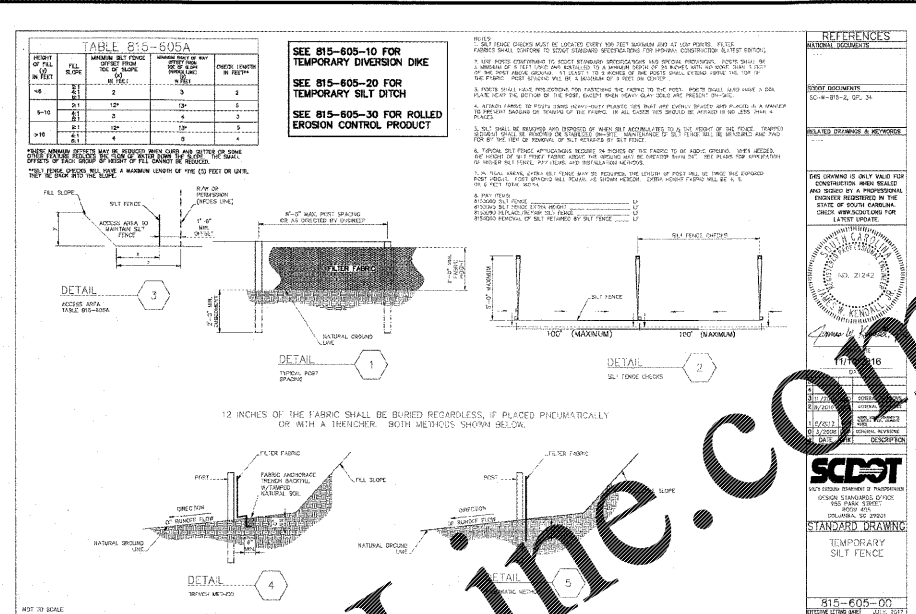


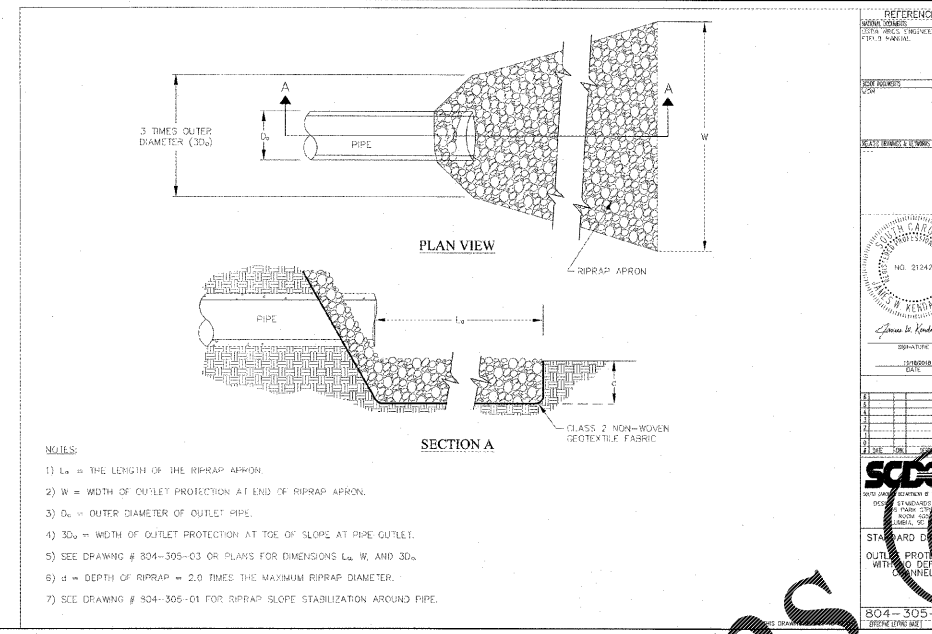
NOTES:  
 1. THE FABRIC FILTER FABRIC SHALL BE PLACED OVER THE RIPRAP APRON TO PREVENT EROSION OF THE RIPRAP APRON.  
 2. THE RIPRAP APRON SHALL BE PLACED OVER THE FABRIC FILTER FABRIC TO PREVENT EROSION OF THE FABRIC FILTER FABRIC.  
 3. THE RIPRAP APRON SHALL BE PLACED OVER THE FABRIC FILTER FABRIC TO PREVENT EROSION OF THE FABRIC FILTER FABRIC.  
 4. THE RIPRAP APRON SHALL BE PLACED OVER THE FABRIC FILTER FABRIC TO PREVENT EROSION OF THE FABRIC FILTER FABRIC.  
 5. THE RIPRAP APRON SHALL BE PLACED OVER THE FABRIC FILTER FABRIC TO PREVENT EROSION OF THE FABRIC FILTER FABRIC.  
 6. THE RIPRAP APRON SHALL BE PLACED OVER THE FABRIC FILTER FABRIC TO PREVENT EROSION OF THE FABRIC FILTER FABRIC.  
 7. THE RIPRAP APRON SHALL BE PLACED OVER THE FABRIC FILTER FABRIC TO PREVENT EROSION OF THE FABRIC FILTER FABRIC.  
 8. THE RIPRAP APRON SHALL BE PLACED OVER THE FABRIC FILTER FABRIC TO PREVENT EROSION OF THE FABRIC FILTER FABRIC.  
 9. THE RIPRAP APRON SHALL BE PLACED OVER THE FABRIC FILTER FABRIC TO PREVENT EROSION OF THE FABRIC FILTER FABRIC.  
 10. THE RIPRAP APRON SHALL BE PLACED OVER THE FABRIC FILTER FABRIC TO PREVENT EROSION OF THE FABRIC FILTER FABRIC.



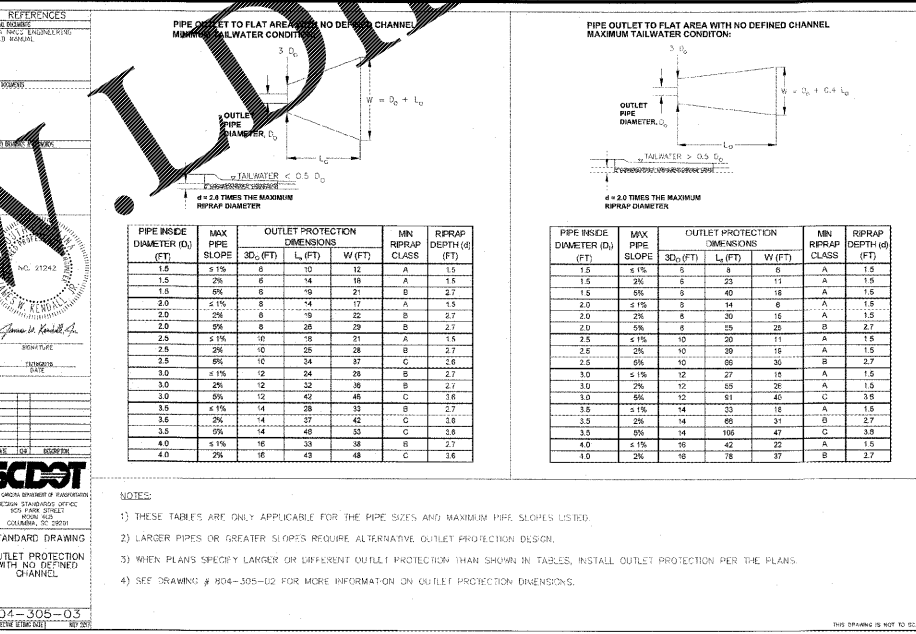
NOTES:  
 1. THE FABRIC FILTER FABRIC SHALL BE PLACED OVER THE RIPRAP APRON TO PREVENT EROSION OF THE RIPRAP APRON.  
 2. THE RIPRAP APRON SHALL BE PLACED OVER THE FABRIC FILTER FABRIC TO PREVENT EROSION OF THE FABRIC FILTER FABRIC.  
 3. THE RIPRAP APRON SHALL BE PLACED OVER THE FABRIC FILTER FABRIC TO PREVENT EROSION OF THE FABRIC FILTER FABRIC.  
 4. THE RIPRAP APRON SHALL BE PLACED OVER THE FABRIC FILTER FABRIC TO PREVENT EROSION OF THE FABRIC FILTER FABRIC.  
 5. THE RIPRAP APRON SHALL BE PLACED OVER THE FABRIC FILTER FABRIC TO PREVENT EROSION OF THE FABRIC FILTER FABRIC.  
 6. THE RIPRAP APRON SHALL BE PLACED OVER THE FABRIC FILTER FABRIC TO PREVENT EROSION OF THE FABRIC FILTER FABRIC.  
 7. THE RIPRAP APRON SHALL BE PLACED OVER THE FABRIC FILTER FABRIC TO PREVENT EROSION OF THE FABRIC FILTER FABRIC.  
 8. THE RIPRAP APRON SHALL BE PLACED OVER THE FABRIC FILTER FABRIC TO PREVENT EROSION OF THE FABRIC FILTER FABRIC.  
 9. THE RIPRAP APRON SHALL BE PLACED OVER THE FABRIC FILTER FABRIC TO PREVENT EROSION OF THE FABRIC FILTER FABRIC.  
 10. THE RIPRAP APRON SHALL BE PLACED OVER THE FABRIC FILTER FABRIC TO PREVENT EROSION OF THE FABRIC FILTER FABRIC.

SCDOT DETAIL NOT TO SCALE 1

SCDOT DETAIL NOT TO SCALE 2



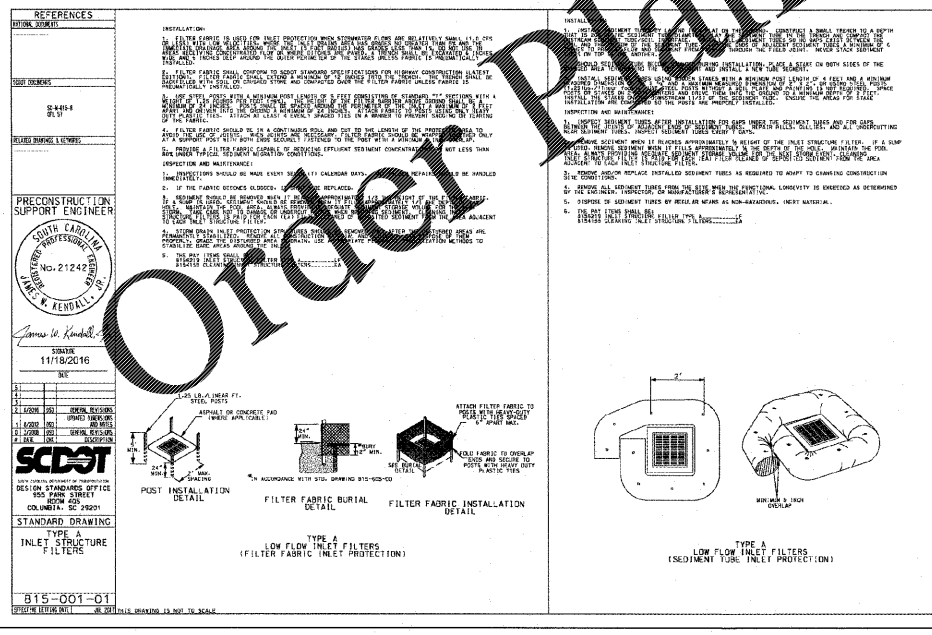
NOTES:  
 1)  $L_a$  = THE LENGTH OF THE RIPRAP APRON.  
 2)  $W$  = WIDTH OF OUTLET PROTECTION AT END OF RIPRAP APRON.  
 3)  $D_o$  = OUTER DIAMETER OF OUTLET PIPE.  
 4)  $3D_o$  = WIDTH OF OUTLET PROTECTION AT TOE OF SLOPE AT PIPE OUTLET.  
 5) SEE DRAWING # 804-305-03 OR PLANS FOR DIMENSIONS  $L_a$ ,  $W$ , AND  $3D_o$ .  
 6)  $d$  = DEPTH OF RIPRAP = 2.0 TIMES THE MAXIMUM RIPRAP DIAMETER.  
 7) SEE DRAWING # 804-305-01 FOR RIPRAP SLOPE STABILIZATION AROUND PIPE.



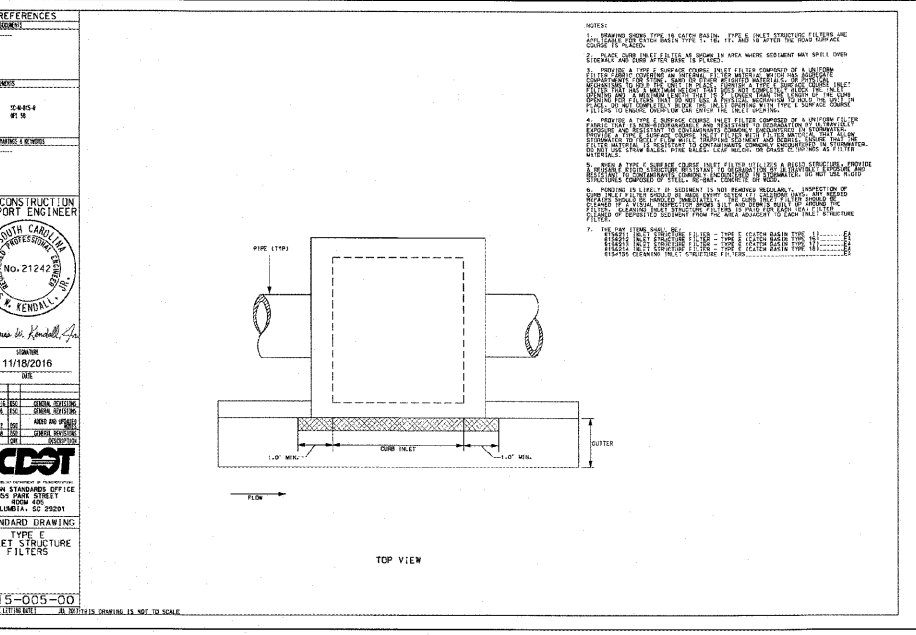
NOTES:  
 1) THESE TABLES ARE ONLY APPLICABLE FOR THE PIPE SIZES AND MAXIMUM PIPE SLOPES LISTED.  
 2) LARGER PIPES OR GREATER SLOPES REQUIRE ALTERNATIVE OUTLET PROTECTION DESIGN.  
 3) WHEN PLANS SPECIFY LARGER OR DIFFERENT OUTLET PROTECTION THAN SHOWN IN TABLES, INSTALL OUTLET PROTECTION PER THE PLANS.  
 4) SEE DRAWING # 804-305-02 FOR MORE INFORMATION ON GULLEY PROTECTION DIMENSIONS.

SCDOT DETAIL NOT TO SCALE 3

SCDOT DETAIL NOT TO SCALE 4



NOTES:  
 1. THE FABRIC FILTER FABRIC SHALL BE PLACED OVER THE RIPRAP APRON TO PREVENT EROSION OF THE RIPRAP APRON.  
 2. THE RIPRAP APRON SHALL BE PLACED OVER THE FABRIC FILTER FABRIC TO PREVENT EROSION OF THE FABRIC FILTER FABRIC.  
 3. THE RIPRAP APRON SHALL BE PLACED OVER THE FABRIC FILTER FABRIC TO PREVENT EROSION OF THE FABRIC FILTER FABRIC.  
 4. THE RIPRAP APRON SHALL BE PLACED OVER THE FABRIC FILTER FABRIC TO PREVENT EROSION OF THE FABRIC FILTER FABRIC.  
 5. THE RIPRAP APRON SHALL BE PLACED OVER THE FABRIC FILTER FABRIC TO PREVENT EROSION OF THE FABRIC FILTER FABRIC.  
 6. THE RIPRAP APRON SHALL BE PLACED OVER THE FABRIC FILTER FABRIC TO PREVENT EROSION OF THE FABRIC FILTER FABRIC.  
 7. THE RIPRAP APRON SHALL BE PLACED OVER THE FABRIC FILTER FABRIC TO PREVENT EROSION OF THE FABRIC FILTER FABRIC.  
 8. THE RIPRAP APRON SHALL BE PLACED OVER THE FABRIC FILTER FABRIC TO PREVENT EROSION OF THE FABRIC FILTER FABRIC.  
 9. THE RIPRAP APRON SHALL BE PLACED OVER THE FABRIC FILTER FABRIC TO PREVENT EROSION OF THE FABRIC FILTER FABRIC.  
 10. THE RIPRAP APRON SHALL BE PLACED OVER THE FABRIC FILTER FABRIC TO PREVENT EROSION OF THE FABRIC FILTER FABRIC.



NOTES:  
 1. THE FABRIC FILTER FABRIC SHALL BE PLACED OVER THE RIPRAP APRON TO PREVENT EROSION OF THE RIPRAP APRON.  
 2. THE RIPRAP APRON SHALL BE PLACED OVER THE FABRIC FILTER FABRIC TO PREVENT EROSION OF THE FABRIC FILTER FABRIC.  
 3. THE RIPRAP APRON SHALL BE PLACED OVER THE FABRIC FILTER FABRIC TO PREVENT EROSION OF THE FABRIC FILTER FABRIC.  
 4. THE RIPRAP APRON SHALL BE PLACED OVER THE FABRIC FILTER FABRIC TO PREVENT EROSION OF THE FABRIC FILTER FABRIC.  
 5. THE RIPRAP APRON SHALL BE PLACED OVER THE FABRIC FILTER FABRIC TO PREVENT EROSION OF THE FABRIC FILTER FABRIC.  
 6. THE RIPRAP APRON SHALL BE PLACED OVER THE FABRIC FILTER FABRIC TO PREVENT EROSION OF THE FABRIC FILTER FABRIC.  
 7. THE RIPRAP APRON SHALL BE PLACED OVER THE FABRIC FILTER FABRIC TO PREVENT EROSION OF THE FABRIC FILTER FABRIC.  
 8. THE RIPRAP APRON SHALL BE PLACED OVER THE FABRIC FILTER FABRIC TO PREVENT EROSION OF THE FABRIC FILTER FABRIC.  
 9. THE RIPRAP APRON SHALL BE PLACED OVER THE FABRIC FILTER FABRIC TO PREVENT EROSION OF THE FABRIC FILTER FABRIC.  
 10. THE RIPRAP APRON SHALL BE PLACED OVER THE FABRIC FILTER FABRIC TO PREVENT EROSION OF THE FABRIC FILTER FABRIC.

SCDOT DETAIL NOT TO SCALE 5

SCDOT DETAIL NOT TO SCALE 6

Drawing name: L:\250005 - Carolina RE Holdings, LLC - Burger King - Andrews, SC\SCDOT\CONSTRUCTION\815-005 - EASC DETAILS.dwg EROSION CONTROL DETAILS-1, Aug 28, 2019 1:27pm, by michael.konarski

**LE CRAW ENGINEERING**  
 PREPARED IN THE OFFICE OF  
 © 2019 LE CRAW ENGINEERING, INC.  
 3475 COLUMBIA WAY  
 SUITE 100  
 DULUTH, GA 30096  
 PHONE - 478-548-8100  
 FAX - 770-441-0288  
 WWW.LECRAWENGINEERING.COM  
 GCR-1463

**CAROLINA RE HOLDINGS, LLC**  
 300 GALLERIA PARKWAY - ATLANTA, GA 30339  
**BURGER KING - ANDREWS, SC**  
 406 & 408 EAST MAIN STREET  
 PARCEL # 06-0008-021-00-00  
 ANDREWS, GEORGETOWN COUNTY, SOUTH CAROLINA

**SEAL:**  
 SOUTH CAROLINA  
 LeCraw Engineering, Inc.  
 No. 4400  
 STATE OF AUTHORITY

**DESIGN TEAM:**  
 DRAWN BY: MAT  
 DESIGNED BY: MAT  
 REVIEWED BY: MSL

**811**  
 Know what's below.  
 Call before you dig.

DETAILS ARE NOT DRAWN TO SCALE

JOB #: 250005  
 DATE: JULY 30, 2019  
 EROSION CONTROL DETAILS - 1  
**C-2.3**