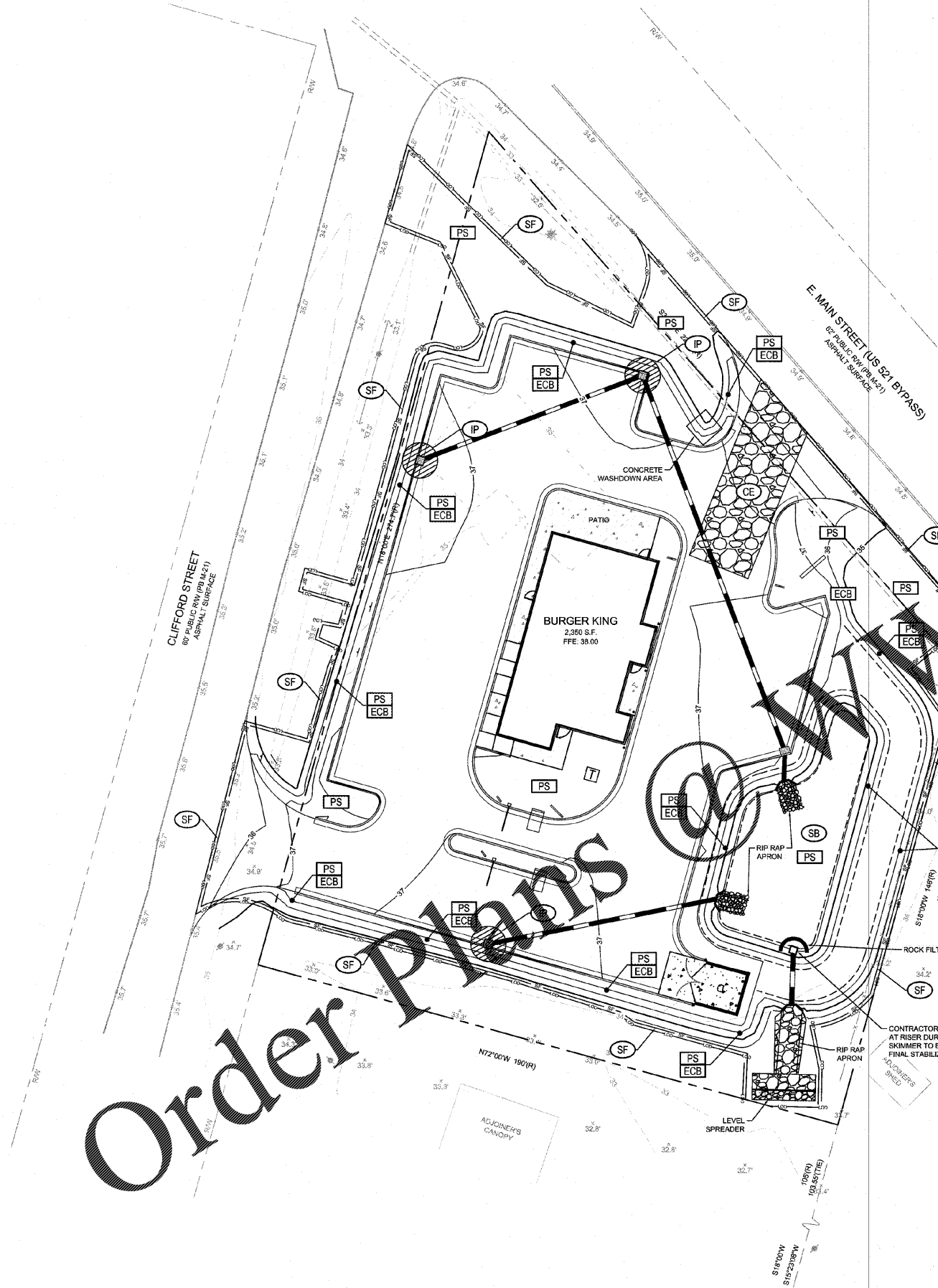


Order Plans



**SOIL SERIES**

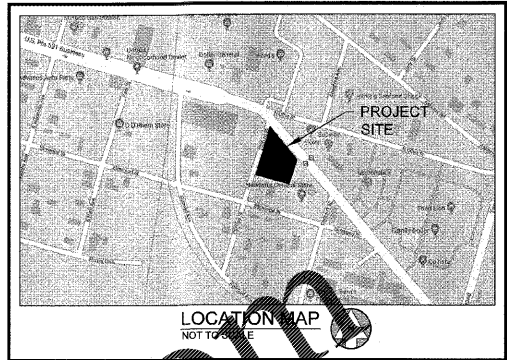
59 WAHEE FINE SANDY LOAM

**SCDOT NOTE:**

ALL ITEMS IN SECTION 10D OF THE CURRENT ARMS MANUAL FOR BOTH CONSTRUCTION AND POST CONSTRUCTION DESIGN HAVE BEEN STUDIED AND ADDRESSED. ALL NECESSARY BMPs HAVE BEEN IMPLEMENTED FOR BOTH PHASES (CONSTRUCTION AND POST-CONSTRUCTION) TO AVOID NEGATIVELY IMPACTING IMPAIRED WATERS OF THE SCDOT SYSTEM AND/OR ITS DISCHARGES.

**PROPERTY OWNER:**

CAROLINA RE HOLDINGS, LLC  
300 GALLERIA PARKWAY  
ATLANTA, GA 30339  
646.462.5481  
CONTACT:  
MR. BRUCE DANIELS



**GENERAL NOTES:**

- 1) ALL BEST MANAGEMENT PRACTICES ARE TO BE IN ACCORDANCE WITH THE MANUAL FOR EROSION AND SEDIMENT CONTROL IN SOUTH CAROLINA.
- 2) BOUNDARY AND TOPOGRAPHIC SURVEY BY BARRETT SURVEYING GROUP LLC, DATED MAY 30, 2019. BENCHMARKS PROVIDED ON SURVEY.
- 3) SOIL TYPES FOR THE DISTURBED AREA IS 60 PER NRCS WEB SOIL SURVEY.
- 4) THE ESCAPE OF SEDIMENT FROM THE SITE SHALL BE PREVENTED BY THE INSTALLATION OF EROSION AND SEDIMENTATION CONTROL MEASURES AND PRACTICES SHALL BE INSTALLED PRIOR TO OR CONCURRENT WITH LAND DISTURBING ACTIVITIES.
- 5) EROSION AND SEDIMENTATION CONTROL MEASURES AND PRACTICES SHALL BE MAINTAINED AT ALL TIMES. IF FULL IMPLEMENTATION OF THE APPROVED PLAN DOES NOT PROVIDE FOR EFFECTIVE EROSION CONTROL, ADDITIONAL EROSION AND SEDIMENT CONTROL MEASURES SHALL BE IMPLEMENTED TO CONTROL OR TREAT THE SEDIMENT SOURCE. ADDITIONAL EROSION AND SEDIMENTATION CONTROL MEASURES AND PRACTICES SHALL BE INSTALLED IF DEEMED NECESSARY BY ON-SITE INSPECTION.
- 6) SEDIMENT STORAGE MAINTENANCE INDICATORS MUST BE INSTALLED IN SEDIMENT STORAGE STRUCTURES, AS REQUIRED, INDICATING THE 100% FULL VOLUME.
- 7) MAINTENANCE OF ALL SOIL EROSION AND SEDIMENTATION CONTROL MEASURES AND PRACTICES, WHETHER TEMPORARY OR PERMANENT, SHALL BE AT ALL TIMES THE RESPONSIBILITY OF THE PROPERTY OWNER.
- 8) WASHOUT OF CONCRETE DRUM AT CONSTRUCTION SITE IS PROHIBITED AND NOT ALLOWED IN WASH AREAS.

TOTAL SITE AREA = 0.923 ACRES  
TOTAL DISTURBED AREA = 0.933 ACRES

CODE	PRACTICE	DETAIL	MAP SYMBOL	DESCRIPTION
CD	CHOKEDOME			A small temporary barrier or dike. A small temporary barrier or dike. A small temporary barrier or dike.
CE	CONSTRUCTION EFT			A crushed stone pad located at the entrance to the site. A crushed stone pad located at the entrance to the site. A crushed stone pad located at the entrance to the site.
DB	DEBRIS DIRT			An earth channel or ditch located along the site perimeter. An earth channel or ditch located along the site perimeter. An earth channel or ditch located along the site perimeter.
SF	SEDIMENT BARRIER			A barrier to prevent erosion from leaving the construction site. A barrier to prevent erosion from leaving the construction site. A barrier to prevent erosion from leaving the construction site.
IP	STORM DRAIN PROTECTION			Stone with 1/2 inch protection is installed by electrician to protect the storm drain. Stone with 1/2 inch protection is installed by electrician to protect the storm drain. Stone with 1/2 inch protection is installed by electrician to protect the storm drain.
SB	TEMPORARY SLOPE STABILIZATION			A bank created by erosion control or a slope created by erosion control. A bank created by erosion control or a slope created by erosion control. A bank created by erosion control or a slope created by erosion control.

**VEGETATIVE MEASURES**

M	DISTURBED AREA STABILIZATION (WITH MULCHING ONLY)			Establishing temporary vegetation for disturbed areas. Establishing temporary vegetation for disturbed areas. Establishing temporary vegetation for disturbed areas.
TS	DISTURBED AREA STABILIZATION (WITH TEMPORARY SEEDING)			Establishing temporary vegetation cover with fast growing seedlings in disturbed areas. Establishing temporary vegetation cover with fast growing seedlings in disturbed areas. Establishing temporary vegetation cover with fast growing seedlings in disturbed areas.
PS	DISTURBED AREA STABILIZATION (WITH PERMANENT VEGETATION)			Establishing permanent vegetation cover such as trees, shrubs, vines, grasses, and/or hay over or disturbed areas. Establishing permanent vegetation cover such as trees, shrubs, vines, grasses, and/or hay over or disturbed areas. Establishing permanent vegetation cover such as trees, shrubs, vines, grasses, and/or hay over or disturbed areas.
ECB	EROSION CONTROL MATS AND BLANKETS			The installation of a procedure involving fabricating a mat installation mat on a prepared planting area of a steep slope, channel, or structure. The installation of a procedure involving fabricating a mat installation mat on a prepared planting area of a steep slope, channel, or structure. The installation of a procedure involving fabricating a mat installation mat on a prepared planting area of a steep slope, channel, or structure.

**EROSION CONTROL CONSTRUCTION SEQUENCE**

1. RECEIVE NPDES COVERAGE FROM DHEC
  2. NOTIFY THE STORM WATER UTILITY OFFICE 48 HOURS PRIOR TO BEGINNING LAND-DISTURBING ACTIVITIES
  3. PRE-CONSTRUCTION MEETING
  4. INSTALLATION OF CONSTRUCTION ENTRANCE(S)
  5. CLEARING & GRUBBING ONLY AS NECESSARY FOR INSTALLATION OF PERIMETER CONTROLS
  6. INSTALLATION OF PERIMETER CONTROLS (E.G., SILT FENCE)
  7. CLEARING & GRUBBING ONLY IN AREAS OF BASINS/TRAPS/PONDS
  8. INSTALLATION OF BASIN/TRAPS/PONDS (OUTLET STRUCTURES MUST BE COMPLETELY INSTALLED AS SHOWN ON THE DETAILS BEFORE PROCEEDING TO NEXT STEP; AREAS DRAINING TO THESE STRUCTURES CANNOT BE DISTURBED UNTIL THE STRUCTURE IS COMPLETELY INSTALLED)
  9. CLEARING & GRUBBING OF SITE OR DEMOLITION (SEDIMENT & EROSION CONTROL MEASURES FOR THESE AREAS MUST ALREADY BE INSTALLED)
  10. ROUGH GRADING
  11. INSTALLATION OF STORM DRAIN SYSTEM AND PLACEMENT OF INLET PROTECTION AS EACH INLET IS INSTALLED
  12. FINE GRADING, PAVING AND INSTALLATION OF POST-PAVE INLET PROTECTION, ETC.
  13. PERMANENT FINAL STABILIZATION
  14. CLEAN-OUT OF DETENTION BASINS THAT WERE USED AS SEDIMENT CONTROL STRUCTURES AND RE-GRADING OF DETENTION POND BOTTOMS, IF NECESSARY. MODIFICATION OF SEDIMENT BASIN RISER TO CONVERT TO DETENTION BASIN OUTLET STRUCTURE
  15. REMOVAL OF TEMPORARY SEDIMENT & EROSION CONTROL MEASURES AFTER ENTIRE AREA DRAINING TO THE STRUCTURE IS FINALLY STABILIZED (THE SCSWU RECOMMENDS THAT THE PROJECT OWNER/ OPERATOR HAVE THE SWPPP PREPARED OR REGISTRATION EQUIVALENT APPROVE THE REMOVAL OF TEMPORARY STRUCTURES.)
- NOTE: MAINTENANCE OF SEDIMENT AND EROSION CONTROL MEASURES MUST CONTINUE UNTIL THE SITE IS PERMANENTLY STABILIZED AND THE CONTROLS ARE REMOVED.**
- NOTE: INSTALLATION OF SOME PERMANENT WATER QUALITY DEVICES SHOULD OCCUR AFTER THE SITE IS STABILIZED; INCLUDE THIS IN THE SEQUENCE. CLEANOUT OF OTHER WATER QUALITY DEVICES THAT WERE USED DURING CONSTRUCTION SHOULD OCCUR AFTER SITE STABILIZATION.**
- NOTE: IF FLOWS FROM OFFSITE AREAS WILL BE DIVERTED AROUND THE SITE AND THE ON-SITE STRUCTURES ARE NOT DESIGNED TO HANDLE FLOWS FROM THE OFFSITE AREAS, THEN THE DIVERSIONS PIPING FOR THE OFFSITE FLOWS MUST BE INSTALLED BEFORE LAND-DISTURBING ACTIVITIES BEGIN ON THE SITE. INCLUDE THIS IN THE SEQUENCE. SEDIMENT AND EROSION CONTROL MEASURES FOR THE DIVERSION/ PIPING DISTURBED AREAS MUST BE INSTALLED AND SHOULD BE SHOWN ON THE PLANS.**
- ESTIMATED STARTING DATE IS WITHIN TWO (2) WEEKS AFTER RECEIVING ALL NECESSARY PERMITS FROM LOCAL AUTHORITIES. ESTIMATED TIME OF COMPLETION IS FIVE (5) MONTHS AFTER THE START OF CONSTRUCTION.

**24 HOUR CONTACT:**

MR. BRUCE DANIELS - 646.462.5481  
CAROLINA RE HOLDINGS, LLC

**NOTE:**

CONTRACTOR IS RESPONSIBLE FOR THE SEQUENCE AND TIMING OF ALL EROSION AND SEDIMENT CONTROL MEASURES. PHASING PLANS ARE ONLY A GENERAL GUIDE TO EROSION AND SEDIMENT CONTROL REQUIREMENTS AS DEVELOPMENT OCCURS.

**LECRAW ENGINEERING**  
PREPARED IN THE OFFICE OF:  
© 2019 LECRAW ENGINEERING, INC.  
3415 COLLETTA DRIVE  
SUITE 100  
DULUTH, GA 30096  
PHONE - 678 548 8100  
FAX - 770 441 0288  
WWW.LECRAWENGINEERING.COM  
CON - 463

DATE	REVISION	BY	CHKD

**CLIENT**  
CAROLINA RE HOLDINGS, LLC  
300 GALLERIA PARKWAY - ATLANTA, GA 30339

**PROJECT**  
BURGER KING - ANDREWS, SC  
406 & 408 EAST MAIN STREET  
PARCEL # 06-0009-021-00-00  
ANDREWS, GEORGETOWN COUNTY, SOUTH CAROLINA

**SEAL:**

**LeCraw Engineering, Inc.**  
No. 4400  
STATE OF SOUTH CAROLINA  
Professional Engineer  
8/28/19

**Mark S. LeCraw**  
No. 29099  
8/28/19  
Professional Engineer  
STATE OF SOUTH CAROLINA

**DESIGN TEAM:**

DRAWN BY: MAT  
DESIGNED BY: MAT  
REVIEWED BY: MSL

**811**  
Know what's below.  
Call before you dig.

**SCALE & NORTH ARROW:**

JOB #: 259005  
DATE: JULY 30, 2019  
EROSION CONTROL PLAN - PHASE 2  
**C-2.1**

Drawing name: L:\259005 - Carolina RE Holdings, LLC - Burger King - Andrews, SC\ADD\CONSTR\259005-03 - EROSION CONTROL PLAN - PHASE 2 - July 23, 2019 1:26pm by michael.loebaker