



Pate Design Group, Inc.
Architecture / Interiors

4168 Abbotts Bridge Road
Duluth, Georgia 30097

(p) 770.814.0885
(f) 770.814.0886

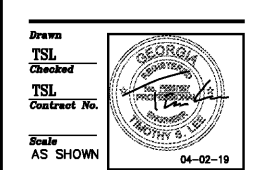
Kirby@patedesigngroup.com

POOL PAVILLION
WISTERIA RIDGE
Will-O-War LLC
75 North Main Street
Watkinsville, GA 30677

Issue & Revisions:

No.	Date	Description
REV 1	040119	CLARIFICATION

ELECTRICAL PLAN

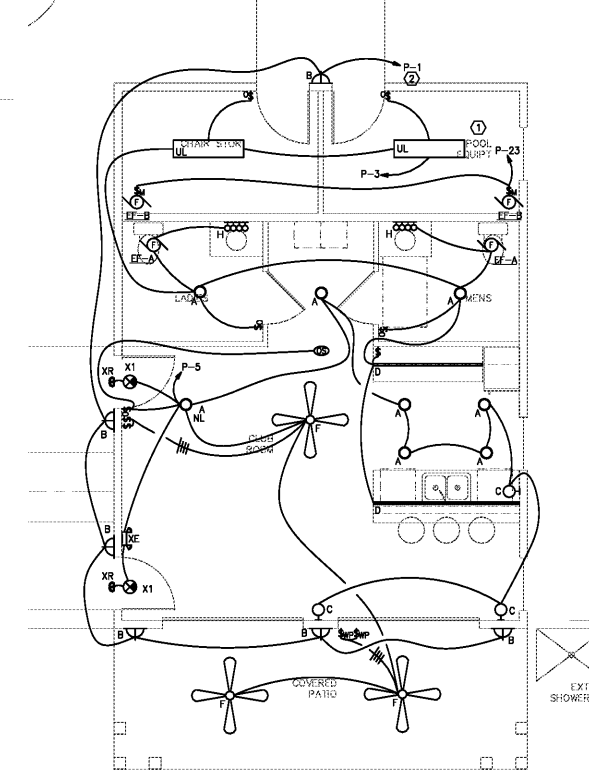
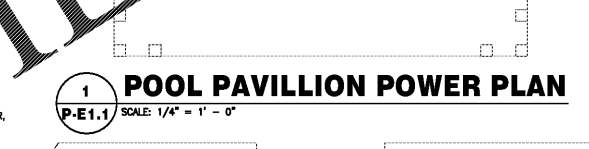
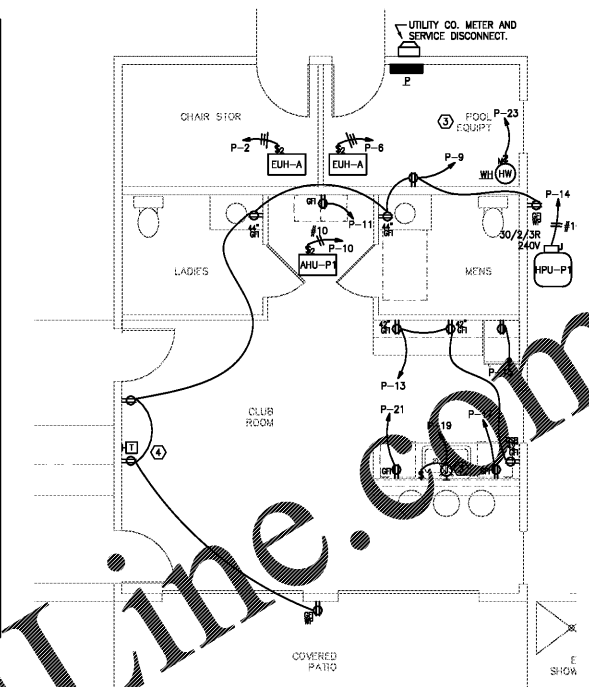


Scale AS SHOWN

03-05-19 of sheets

THIS DRAWING IS THE PROPERTY OF PATE DESIGN GROUP AND IS NOT TO BE COPIED OR REPRODUCED IN ANY MANNER. IT IS TO BE USED FOR THE PROJECT AND THE SPECIFICALLY IDENTIFIED HEREIN AND IS NOT TO BE USED IN ANY OTHER PROJECT. IT IS TO BE RETURNED UPON REQUEST.

SHEET SIZE: 30x42



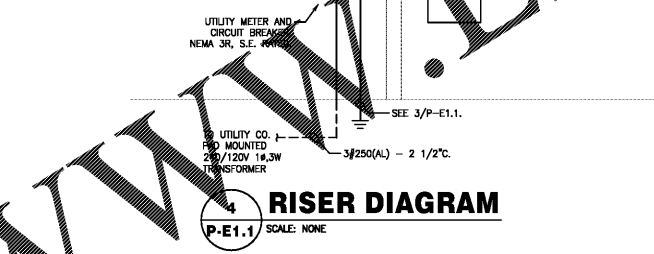
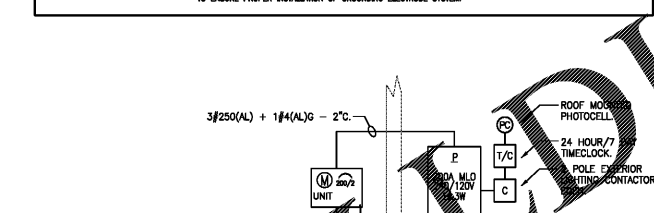
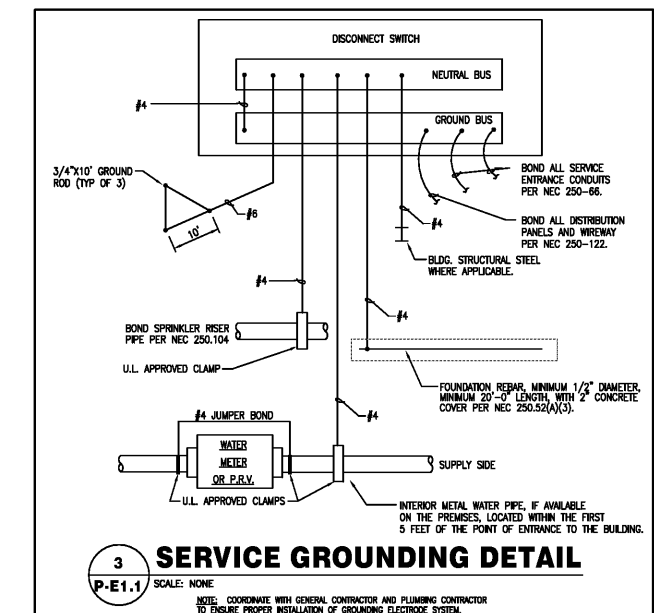
2 POOL PAVILLION LIGHTING PLAN
P-E1.1 SCALE: 1/4" = 1' - 0"

- KEY NOTES:**
- MATERIALS AND METHODS USED IN POOL EQUIPMENT ROOM AND CHEMICAL STORAGE ROOM SHALL BE LISTED AND IDENTIFIED FOR USE IN A CORROSIVE ENVIRONMENT PER NEC 680.14.
 - CONNECT HOMERUN VIA EXTERIOR LIGHTING CONTACTOR. PROVIDE UNSWITCHED HOT CONDUCTOR (BYPASS CONTACTOR) FOR EXIT/EMERGENCY/NIGHT LIGHT FIXTURES.
 - CONNECT DISPOSAL VIA J-BOX MOUNTED BELOW SINK. STRAP FLEX CONNECTION BETWEEN J-BOX AND DISPOSAL TO CABINET.
 - COORDINATE LOCATION, HEIGHT, AND INSTALLATION REQUIREMENTS OF TV PRIOR TO ROUGH IN. PROVIDE RECESSED "CLOCK BOX" TYPE OUTLETS.

LOAD STUDY

ITEM	LOAD (KVA)
LIGHTING	1.07
RECEPTACLES	1.62
1/2 HP MOTORS	1.56
3/4 HP MOTORS	0.00
1 HP AC	16.80
WATER HEATERS	0.00
OTHER CONTRACTORS	0.00
OTHER NON-CONTRACTORS	4.00
KITCHEN EQUIPMENT	0.00
TOTAL LOAD	25.05

Lastinger & Associates, Inc.
6790 Abbotts Bridge Road - Suite 401 Ph: (770) 622-7023
Johns Creek, GA 30097 Georgia #PE037597 LA819130



LIGHT FIXTURE SCHEDULE

TYPE	DESCRIPTION	LAMPS	WATTS/VOLTS
A	INTERIOR 6" RECESSED LED	LED	25W 120V
B	EXTERIOR WALL SCIENCE	LED	20W 120V
C	WALL SCIENCE	LED	50W 120V
D	UNDERCOUNTER LIGHT	LED	25W 120V
F	FAN/LIGHT	LED	150W 120V
H	VANITY LIGHT	LED	180W 120V
UL	UTILITY LIGHT	LED	42W 120V
XE	DUAL HEAD EMERGENCY LIGHT	LED	5W 120V
X1	EDGE/EXIT LIGHT	LED	5W 120V
XR	EXTERIOR DUAL HEAD EMERGENCY LIGHT	LED	5W 120V

FAULT ANALYSIS

PORT A: SUTL. CO. PAD TRANS. T
POINT B: CIRCUIT BREAKER DP
DISTANCE (FT): 25
ISCA: 34792
ISCB: 94 x ISCA
Ia=911-A
Ib=11.732 x 25 x 34792/(12892 x 1 x 240)=489
Ic=911+0.489=911.489
ISCB = 0.67 x 34792 = 23381

PANELBOARD SCHEDULE - P

MARKS: 200A MEC	VOLTAGE: 240/120V	PHASE: 1	WIRE: 3	MOUNTING SURFACE	ENCLOSURE: NEMA 1
CRKT TRIP	DESCRIPTION	PHASE A	PHASE B	DESCRIPTION	TRIP CRKT
1	201 LIGHTING EXTERIOR	0.55	1.84	EUH-A	152
2	201 LIGHTING	0.33	1.64	EUH-A	152
3	201 LIGHTING	0.33	1.64	EUH-A	152
4	201 SPARE	1.00	1.75	HP-P1	25
5	201 WATER CASCER	1.00	1.75	HP-P1	25
6	201 RECEPTS	0.54	1.36	AHU-P1	302
7	201 Fridge	1.00	1.36		18
8	201 DISPOSAL	1.00	0.50		20
9	201 Fridge	1.00	0.50		24
10	201 SPARE	1.00	0.50		24
11	201 SPARE	1.00	0.50		24
12	201 SPARE	1.00	0.50		24
13	201 SPARE	1.00	0.50		24
14	201 SPARE	1.00	0.50		24
15	201 SPARE	1.00	0.50		24
16	201 SPARE	1.00	0.50		24
17	201 SPARE	1.00	0.50		24
18	201 SPARE	1.00	0.50		24
19	201 SPARE	1.00	0.50		24
20	201 SPARE	1.00	0.50		24
21	201 SPARE	1.00	0.50		24
22	201 SPARE	1.00	0.50		24
23	201 SPARE	1.00	0.50		24
24	201 SPARE	1.00	0.50		24
25	201 SPARE	1.00	0.50		24
26	201 SPARE	1.00	0.50		24
27	201 SPARE	1.00	0.50		24
28	201 SPARE	1.00	0.50		24
29	201 SPARE	1.00	0.50		24
30	201 SPARE	1.00	0.50		24

COMcheck Software Version 4.1.1.0
Interior Lighting Compliance Certificate

Project Information
Energy Code: 90.1 (2007) Standard
Project Title: Pool Bldg, Wisteria Ridge
Project Type: New Construction

Contractor: Bill Watkinsville, GA
Owner/Agent: [Blank]
Designer/Contractor: Timothy S. Lee, Lastinger & Associates, Inc., 6290 Abbotts Bridge Road, Suite 401, Johns Creek, GA 30097

Allowed Interior Lighting Power

Area Category	Floor Area (ft²)	Allowed Watts / ft²	Allowed Watts (ft² x C)
1. Dining Bar Lounge/Bar	720	1.12	807
Total Allowed Watts =			807

Proposed Interior Lighting Power

Fixture ID - Description / Lamp / Wattage Per Lamp / Ballast	Lamps / Fixture	# of Fixtures	Watt. (C X D)
1. Dining Bar Lounge/Bar			
LED 1 A: Dimm	1	8	28
LED 1 C: Dimm	1	3	50
LED 1 copy 2 B: Dimm	1	4	25
LED 1 copy 4 F: Dimm	1	1	50
Incandescent 1 H: Incandescent 60W	3	2	180
LED 1 copy 3 G: Dimm	1	2	62
Total Proposed Watts =			368

Interior Lighting Compliance Statement
Compliance Statement: The proposed interior lighting design represented in this document is consistent with the building plans, specifications, and other calculations submitted with this permit application. The proposed interior lighting systems have been designed to meet the 90.1 (2007) Standard requirements as COMcheck software v. 4.1.1.0 and to comply with any applicable regulatory requirements listed in the Inspection Checklist.

TIMOTHY S. LEE, P.E.
Signature: [Signature] Date: 04-02-19

Project Title: Pool Bldg, Wisteria Ridge Report Date: 03/04/19
Data Reference: 212019191303COMCHECK_P.doc Page: 1 of 5

- RISER DIAGRAM NOTES:**
- COORDINATE METERING REQUIREMENTS WITH UTILITY COMPANY PRIOR TO ORDERING METER CENTERS. VERIFY WITH UTILITY THAT METERS ARE COMPATIBLE WITH THE METER CENTERS THAT ARE BEING PROVIDED.
 - SERIES RATE LOAD CENTERS AND PANELS WITH METER CENTERS.
 - METER CENTERS AND PANELS LOCATED OUTDOORS SHALL BE NEMA 3R.
 - WHERE A BUILDING IS SUPPLIED BY MORE THAN ONE SERVICE, PROVIDE PERMANENT PLACARDS AT EACH SERVICE DISCONNECT LOCATION INDICATING THE QUANTITY AND LOCATION OF ALL SERVICE DISCONNECT LOCATIONS PER NEC 230.2(E).
 - WHERE A SINGLE PHASE SERVICE ENTRANCE FEEDER IS PROVIDED AND INSTALLED BY THE UTILITY COMPANY, COORDINATE METERING REQUIREMENTS WITH THE UTILITY COMPANY. PROVIDE GREAT BACK TO OWNER FOR SERVICE FEEDERS LOCATED IN BID THAT ARE INSTALLED BY THE UTILITY COMPANY.
- NOTES AND SPECIFICATIONS:**
- CONTRACTOR SHALL VISIT THE SITE AND THOROUGHLY FAMILIARIZE HIMSELF WITH EXISTING CONDITIONS. NO ALLOWANCE WILL BE SUBMITTED FOR THIS BECAUSE OF ANY ERROR ON HIS PART RELATED TO AGENCIES OF KNOWLEDGE ABOUT THE WORK ON THE SITE.
 - CONTRACTOR SHALL OBTAIN ALL NECESSARY PERMITS AND EQUIPMENT, PAY ALL FEES AND COSTS, SHOWING ALL NECESSARY CONNECTIONS TO PROVIDE A COMPLETE ELECTRICAL INSTALLATION.
 - CONTRACTOR SHALL COORDINATE WITH ALL UTILITIES. CONTRACTOR SHALL PAY ALL ASSOCIATED COSTS FOR TEMPORAL INSTALLATIONS AND TO BE INSTALLED IN A CLASS WORKMANLIKE MANNER.
 - ALL ELECTRICAL INSTALLATIONS SHALL COMPLY WITH NATIONAL AND LOCAL CODES AND TO BE INSTALLED IN A CLASS WORKMANLIKE MANNER.
 - ALL WIRING SHALL BE INSTALLED PER THESE DRAWINGS SHALL BE NEW AND UL LABELED AND LISTED FOR THEIR SPECIFIC USE.
 - WORK SHALL BE GUARANTEED FOR A PERIOD OF ONE (1) YEAR FROM THE DATE OF OCCUPANCY (C.O.). ALL ELECTRICAL EQUIPMENT AND SYSTEMS SHALL BE TESTED AND ADJUSTED FOR PROPER OPERATION AND FAULT FREE UPON DELIVERY TO OWNER.
 - LOCATIONS SHOWN ARE APPROXIMATE. CONTRACTOR SHALL COORDINATE ACTUAL LOCATIONS WITH OTHER TRADES. THESE DRAWINGS ARE GENERALLY DIAGRAMMATIC IN NATURE.
 - ANY RENOVATION WORK OF EXISTING INSTALLATIONS INCLUDED IN THESE DRAWINGS IS BASED ON INFORMATION PROVIDED TO THE ENGINEER AND/OR THE ENGINEER'S FIELD OBSERVATIONS. CONTRACTOR SHALL NOTIFY THE ENGINEER OF DISCREPANCIES FOUND IN THE EXISTING INSTALLATION AND THE WORK SHOWN IN THESE DRAWINGS THAT MAY ADVERSELY AFFECT THE COST OR SCOPE OF WORK.
 - ALL ELECTRICAL EQUIPMENT SHALL BE IDENTIFIED WITH PERMANENT LABELS. EXTERIOR LABELS SHALL BE WEATHERPROOF.
 - PANELBOARDS SHALL BE EQUAL TO SQUARE D TYPE NOOD, BOLT-ON BREAKERS, 20" MINIMUM WIDTH. SEE PANELBOARD SCHEDULES FOR AG RATINGS.
 - ALL 15A/1P AND 20A/1P CIRCUIT BREAKERS SHALL BE SWITCH DUTY RATED. ALL BREAKERS SERVING HVAC EQUIPMENT SHALL BE HACR RATED. MULTI-POLE BREAKERS SHALL HAVE COMMON TRIP ELEMENT.
 - PANELS SHALL BE DEADFRONT WITH NO OPEN SPACES OR KNOCK-OUTS. PANELS SHALL NOT HAVE CABINETS OR BUSING MOUNTED UPSIDE DOWN.
 - PANELS SHALL HAVE NUMBERED POLE SPACES AND COMPLETED, CORRECT PANEL SCHEDULE.
 - CONDUCTORS SHALL BE COPPER, TYPE THHN/THWN 90°C. MINIMUM WIRE SIZE IS #12 AWG.
 - WHEN PVC CONDUIT IS USED, PROVIDE AN ADDITIONAL EQUIPMENT GROUNDING CONDUCTOR.
 - WHERE CONDUIT, WIRE, OR EQUIPMENT SIZES AND TYPES ARE NOT SHOWN, THEY SHALL BE IN ACCORDANCE WITH NEC REQUIREMENTS.
 - EQUIPMENT, CONDUIT, AND DEVICES ON UNFINISHED WALLS ARE EXPOSED UNLESS NOTED OTHERWISE. EXPOSED AND ABOVE CEILING BRANCH CIRCUITRY SHALL BE THIN COPPER INSTALLED IN EMT RACEWAY WITH STEEL SET SCREW FITTINGS.
 - IN WALLS AND ABOVE CEILINGS, LIGHTING BRANCH CIRCUITRY MAY BE ACCOMPLISHED WITH A FLEXIBLE WIRING SYSTEM COMPLETE WITH ALL FITTINGS AND ACCESSORIES AS MANUFACTURED BY ULITHONA LIGHTING OR EQUAL, LISTED FOR PLENUM USE.
 - UTILIZE TYPE MC CABLE FOR BRANCH CIRCUITRY IN WALLS AND ABOVE CEILINGS.
 - SIZE CONDUCTORS AS NECESSARY TO MEET VOLTAGE DROP REQUIREMENTS OF N.E.C.
 - PROVIDE #6 COPPER GROUND CONDUCTOR AT TELEPHONE BACKBOARD. CONNECT TO BUILDING STEEL.
 - CIRCUITS TO ROOF SHALL BE ROUTED WITHIN RIV CURB.
 - METALLIC ELECTRICAL BOXES SHALL BE INSTALLED SO THERE IS A 24" MIN. HORIZONTAL SEPARATION WHEN BOXES ARE LOCATED ON OPPOSITE SIDES OF A RATED WALL. THE OPENING BETWEEN THE BOX AND THE WALLBOARD SHALL NOT EXCEED 1/8".
 - COORDINATE WITH ARCHITECT OR OWNER FOR COLOR AND FINISH OF DEVICES AND COVERPLATES.

ELECTRICAL LEGEND

[Symbol]	FLUORESCENT TROFFER. SEE FIXTURE SCHEDULE.
[Symbol]	FLUORESCENT TROFFER WITH EMERGENCY BATTERY/CHARGER PACK.
[Symbol]	FLUORESCENT STRIP FIXTURE. SEE FIXTURE SCHEDULE.
[Symbol]	FLUORESCENT FIXTURE, SURFACE MOUNTED, OR PENDANT. SEE FIXTURE SCHEDULE.
[Symbol]	HID FIXTURE. SEE FIXTURE SCHEDULE.
[Symbol]	INCANDESCENT OR HID FIXTURE. SEE FIXTURE SCHEDULE.
[Symbol]	INDICATES WALL BRACKET TYPE MOUNTING.
[Symbol]	EXIT LIGHT WITH BATTERY BACKUP.
[Symbol]	COMBINATION EXIT LIGHT WITH BATTERY BACK UP AND EMERGENCY LIGHTING FEATURE USING TWO HEADS AND REMOTE CAPABILITY.
[Symbol]	EMERGENCY LIGHT WITH BATT./CHARGER, TWO HEADS WITH REMOTE HEAD CAPABILITY.
[Symbol]	REMOTE EMERG. LIGHT HEAD ON ONE GANG BOX AND CONNECTED TO EMERGENCY LIGHT OR COMBINATION EXIT LIGHT.
[Symbol]	WALL SWITCH, SINGLE POLE, 120/277V, QUIET TYPE 44" AFF ON CENTER OR AS NOTED.
[Symbol]	WALL SWITCHES: 2 POLE/3 WIRE/MOTOR RATED/OCCUPANCY SENSOR
[Symbol]	CEILING MOUNTED OCCUPANCY SENSOR
[Symbol]	DIMMER SWITCH, 2000W @ 44" AFF ON CENTER OR AS NOTED.
[Symbol]	JUNCTION BOX WITH COVER PLATE.
[Symbol]	JUNCTION OR PULL BOX.
[Symbol]	MOTOR, FRACTIONAL HP TYPE OR EXHAUST FAN.
[Symbol]	MOTOR, SIZE AS NOTED.
[Symbol]	DISCONNECT SWITCH NON FUSED. RATING/POLES/NEMA ENCLOSURE.
[Symbol]	DISCONNECT SWITCH, FUSED. RATING/POLES/FUSE RATING/NEMA ENCLOSURE.
[Symbol]	PANELBOARD, 480V/277V OR 208V/120V OR 240/120V, SURFACE OR RECESSED AS SHOWN.
[Symbol]	TELEPHONE POLE.
[Symbol]	DUPLEX RECEPTACLE, 18" AFF ON CENTER OR AS NOTED, 15A 125V.
[Symbol]	DUPLEX RECEPTACLE, DEDICATED, 18" AFF ON CENTER OR AS NOTED, 20A 125V.
[Symbol]	DUPLEX RECEPTACLE, ISOLATED GROUND TYPE, ORANGE MARKING, 18" AFF ON CENTER UNLESS NOTED.
[Symbol]	DUPLEX RECEPTACLE, ABOVE COUNTER HEIGHT OR AS NOTED, 20V/125V.
[Symbol]	DUPLEX RECEPTACLE, (RFD), ABOVE COUNTER HEIGHT OR AS NOTED.
[Symbol]	DUPLEX RECEPTACLE, (RFD) WEATHERPROOF WITH GASKETED COVER, AT 18" AFF ON CENTER OR AS NOTED, MOUNTED ON PEDIestal OR ATTACHED TO ISOLATED, ENCL. ON ROOF.
[Symbol]	QUADRUPLX RECEPTACLE, 18" AFF ON CENTER OR AS NOTED, 15A/125V.
[Symbol]	SPECIAL RECEPTACLE, COORDINATE NEMA CONFIGURATION WITH EQUIPMENT.
[Symbol]	CONDUIT AND WIRE CONCEALED IN WALL OR ABOVE CEILING. "EC" MEANS EMPTY CONDUIT WITH PULL CORD.
[Symbol]	CONDUIT AND WIRE UNDERGROUND OR BELOW SLAB.
[Symbol]	HOMERUN TO PANEL.
[Symbol]	SLASH MARKS INDICATE NUMBER OF #12 WIRES IN CONDUIT, EXTENDED SLASH IS NEUTRAL. ABSENCE OF SLASH IS 2/12. SIZE CONDUIT PER N.E.C. EQUIPMENT GROUND REQUIRED IN PVC CONDUIT BUT NOT SHOWN.
[Symbol]	INDICATES INCREASED WIRE SIZE FOR VOLTAGE DROP/IMPACT.
[Symbol]	TELEPHONE HOME RUN TO TEL. CABINET, 1" PVC WITH PULL CORD. STUB UP 6" AFF ON CENTER IN SHOP AT 18" AND SEAL. SEE ELECTRICAL SITE PLAN.
[Symbol]	TEL. BACKBOARD (OR TERMINAL BOARD) 2" x 4" x 3/4" WIRING GRACE, PLYWOOD PAINTED LIGHT GRAY. PROVIDE RECEPTACLE AND POSITIVE GROUND CONDUCTOR. (#6 AWG COPPER)
[Symbol]	DATA OUTLET, WALL MOUNTED 18" AFF ON CENTER OR AS NOTED, WITH 3/4" CONDUIT STUBBED ABOVE CEILING.
[Symbol]	TELEPHONE OUTLET, WALL MOUNTED 18" AFF ON CENTER OR AS NOTED, WITH 3/4" CONDUIT STUBBED ABOVE CEILING.
[Symbol]	COMBINATION TELEPHONE/DATA OUTLET BOX, WALL MOUNTED 18" AFF ON CENTER OR AS NOTED, WITH 3/4" CONDUIT STUBBED ABOVE CEILING.
[Symbol]	TWO-GANG FLUSH FLOOR BOX WITH DUPLEX RECEPTACLE AND COMMUNICATIONS OUTLET. LIGHT COVERS AND CARPET FLANGE.
[Symbol]	THREE-GANG FLUSH FLOOR BOX WITH DUPLEX RECEPTACLE, COMMUNICATIONS OUTLET, AND GROUNDING SPEAKER ROUGH-IN LOCATION.
[Symbol]	RAIN TIGHT/WEATHERPROOF.
[Symbol]	NL NIGHT LIGHT, CONNECT TO SWITCHED CONDUCTOR OF LIGHT CIRCUIT.
[Symbol]	AFF/AFG ABOVE FINISHED FLOOR OR GRADE.
[Symbol]	NRC NEAREST RECEPTACLE CIRCUIT.
[Symbol]	SMOKE DETECTOR
[Symbol]	COMBINATION SMOKE DETECTOR/CO DETECTOR
[Symbol]	DUCT MOUNTED SMOKE DETECTOR.
[Symbol]	SPRINKLER RISER FLOW SWITCH.
[Symbol]	SPRINKLER RISER TAMPER SWITCH.
[Symbol]	N NEW DEVICE.
[Symbol]	R RELOCATED DEVICE.
[Symbol]	E EXISTING DEVICE.
[Symbol]	CAMERA
[Symbol]	BUTTON
[Symbol]	TV OUTLET
[Symbol]	PLUG/GRID