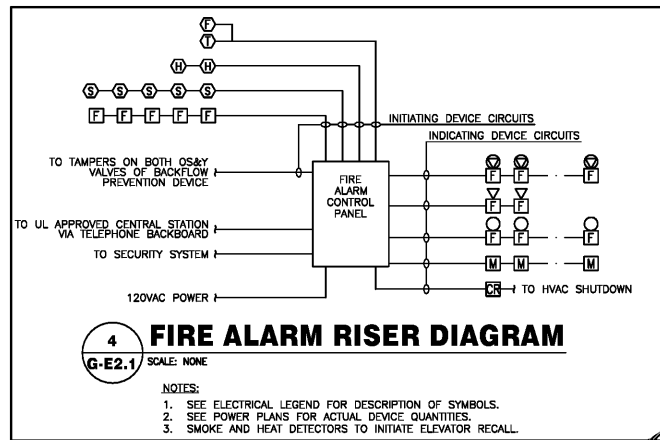
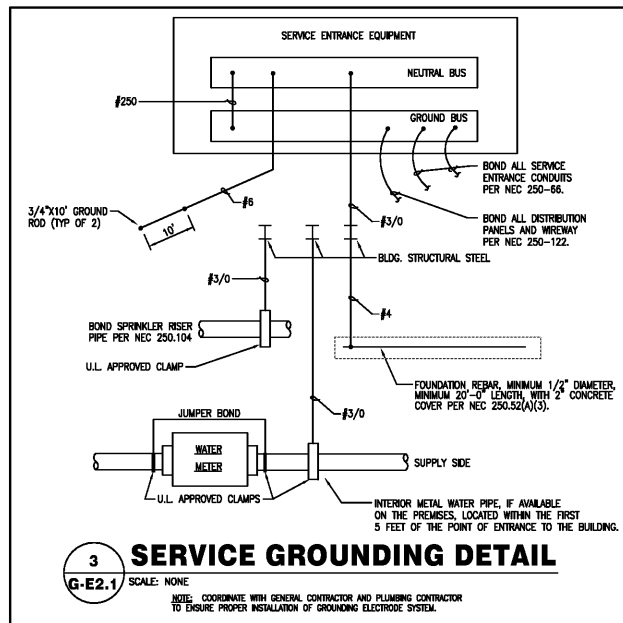
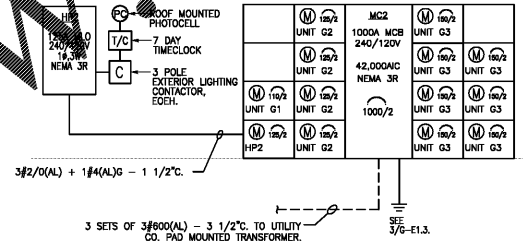
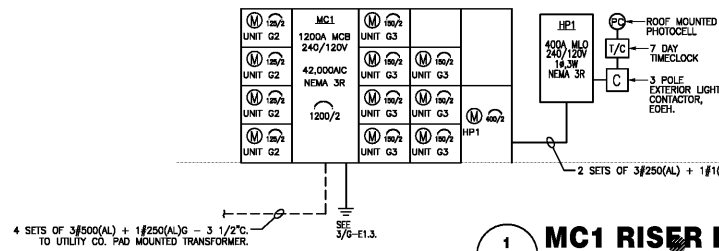


| ELECTRICAL LEGEND | |
|-------------------|---|
| [Symbol] | FLUORESCENT TROFFER. SEE FEATURE SCHEDULE. |
| [Symbol] | FLUORESCENT TROFFER WITH EMERGENCY BATTERY/CHARGER PACK. |
| [Symbol] | FLUORESCENT STRIP FIXTURE. SEE FEATURE SCHEDULE. |
| [Symbol] | FLUORESCENT FIXTURE, SURFACE MOUNTED, OR PENDANT. SEE FEATURE SCHEDULE. |
| [Symbol] | HD FIXTURE. SEE FEATURE SCHEDULE. |
| [Symbol] | INCANDESCENT OR HD FIXTURE. SEE FEATURE SCHEDULE. |
| [Symbol] | INDICATES WALL BRACKET TYPE MOUNTING. |
| [Symbol] | EXIT LIGHT WITH BATTERY BACKUP. |
| [Symbol] | COMBINATION EXIT LIGHT WITH BATTERY BACK UP AND EMERGENCY LIGHTING FEATURE USING TWO HEADS AND REMOTE CAPABILITY. |
| [Symbol] | EMERGENCY LIGHT WITH BATT./CHARGER, TWO HEADS WITH REMOTE HEAD CAPABILITY. |
| [Symbol] | REMOTE EMERG. LIGHT HEAD ON ONE GANG BOX AND CONNECTED TO EMERGENCY LIGHT OR COMBINATION EXIT LIGHT. |
| [Symbol] | WALL SWITCH, SINGLE POLE, 120/277V, QUIET TYPE 44" AFF ON CENTER OR AS NOTED. |
| [Symbol] | WALL SWITCHES: 2 POLE/3 WY/MOTOR RATED/OCCUPANCY SENSOR. |
| [Symbol] | CEILING MOUNTED OCCUPANCY SENSOR. |
| [Symbol] | DIMMER SWITCH, 2000W @ 44" AFF ON CENTER OR AS NOTED. |
| [Symbol] | JUNCTION BOX WITH COVER PLATE. |
| [Symbol] | JUNCTION OR PULL BOX. |
| [Symbol] | MOTOR, FRACTIONAL HP TYPE OR EXHAUST FAN. |
| [Symbol] | MOTOR, SIZE AS NOTED. |
| [Symbol] | DISCONNECT SWITCH NON FUSED. RATING/POLES/NEMA ENCLOSURE. |
| [Symbol] | DISCONNECT SWITCH, FUSED. RATING/POLES/FUSE RATING/NEMA ENCLOSURE. |
| [Symbol] | PANELBOARD, 480/277V OR 208Y/120V OR 240/120V, SURFACE OR RECESSED AS SHOWN. |
| [Symbol] | TELEPHONE POLE. |
| [Symbol] | DUPLEX RECEPTACLE, 18" AFF ON CENTER OR AS NOTED, 15A/125V. |
| [Symbol] | DUPLEX RECEPTACLE, DEDICATED, 18" AFF ON CENTER OR AS NOTED, 20A/125V. |
| [Symbol] | DUPLEX RECEPTACLE, ISOLATED GROUND TYPE, ORANGE MARKING, 18" AFF ON CENTER UNLESS NOTED. |
| [Symbol] | DUPLEX RECEPTACLE, ABOVE COUNTER HEIGHT OR AS NOTED, 20A/125V. |
| [Symbol] | DUPLEX RECEPTACLE, (GFCI), ABOVE COUNTER HEIGHT OR AS NOTED. |
| [Symbol] | DUPLEX RECEPTACLE, (GFI) WEATHERPROOF WITH COVERED COVER, AT 18" AFF ON CENTER OR AS NOTED, MOUNT ON PESTICIDE OR AIRCUT TO EQUIP. ENCL. ON ROOF. |
| [Symbol] | QUADRUPLX RECEPTACLE, 18" AFF ON CENTER OR AS NOTED, 15A/125V. |
| [Symbol] | SPECIAL RECEPTACLE, COORDINATE NEMA CONFIGURATION WITH EQUIPMENT. |
| [Symbol] | CONDUIT AND WIRE CONCEALED IN WALL OR ABOVE CEILING. "1C" MEANS EMPTY CONDUIT WITH PULL COIL. |
| [Symbol] | CONDUIT AND WIRE UNDERGROUND OR BELOW SLAB. |
| [Symbol] | HOMERUN TO PANEL. |
| [Symbol] | SLASH MARKS INDICATE NUMBER OF #12 WIRES IN CONDUIT, EXTENDED SLASH IS NEUTRAL, ABSENCE OF SLASH IS 2#12. SIZE CONDUIT PER N.E.C. EQUIPMENT GROUND REQUIRED IN PVC CONDUIT BUT NOT STUBS. |
| [Symbol] | INDICATES INCREASED WIRE SIZE FOR VOLTAGE DROP/CAPACITY. |
| [Symbol] | TELEPHONE HOME RUN TO TEL. CABINET, 1" PVC WITH PULL COIL. STUB UP 6" AFF ON CENTER IN SHOP AT TEB AND SEAL. SEE ELECTRICAL SITE PLAN. |
| [Symbol] | TEL. BACKBOARD (OR TERMINAL BOARD) 2' x 4' x 3/4" MARINE GRADE, PLYWOOD PAINTED LIGHT GRAY. PROVIDE RECEPTACLE AND POSITIVE GROUND CONDUCTOR. (#8 AWG COPPER). |
| [Symbol] | TEL. OUTLET, WALL MOUNTED 18" AFF ON CENTER OR AS NOTED, WITH 3/4" CONDUIT STUBBED ABOVE CEILING. |
| [Symbol] | TELEPHONE OUTLET, WALL MOUNTED 18" AFF ON CENTER OR AS NOTED, WITH 3/4" CONDUIT STUBBED ABOVE CEILING. |
| [Symbol] | COMBINATION TELEPHONE/DATA OUTLET BOX, WALL MOUNTED 18" AFF ON CENTER OR AS NOTED, WITH 3/4" CONDUIT STUBBED ABOVE CEILING. |
| [Symbol] | TWO-GANG FLUSH FLOOR BOX WITH DUPLEX RECEPTACLE AND COMMUNICATIONS OUTLET WITH COVERS AND CARPET FLANGE. |
| [Symbol] | THREE-GANG FLUSH FLOOR BOX WITH DUPLEX RECEPTACLE, COMMUNICATIONS OUTLET, AND CRT OUTLET WITH COVERS AND CARPET FLANGE. |
| [Symbol] | SPEAKER ROUGH-IN LOCATION. |
| [Symbol] | RAIN TIGHT/WEATHERPROOF. |
| [Symbol] | NIGHT LIGHT, CONNECT TO UNSWITCHED CONDUCTORS OF LIGHTING CIRCUIT. |
| [Symbol] | ABOVE FINISHED FLOOR OR GRADE. |
| [Symbol] | NEAREST RECEPTACLE CIRCUIT. |
| [Symbol] | FIRE ALARM PULLSTATION, 44" AFF FROM BOTTOM OR AS NOTED. |
| [Symbol] | FIRE ALARM HORN, 80" AFF FROM BOTTOM MINIMUM, 96" AFF FROM BOTTOM MAXIMUM. |
| [Symbol] | FIRE ALARM STROBE, 80" AFF FROM BOTTOM MINIMUM, 96" AFF FROM BOTTOM MAXIMUM. |
| [Symbol] | FIRE ALARM HORN/STROBE, 80" AFF FROM BOTTOM MINIMUM, 96" AFF FROM BOTTOM MAXIMUM. |
| [Symbol] | MAGNETIC DOOR HOLDER. |
| [Symbol] | HEAT DETECTOR. |
| [Symbol] | SMOKE DETECTOR. |
| [Symbol] | COMBINATION SMOKE DETECTOR/CO DETECTOR. |
| [Symbol] | DUCT MOUNTED SMOKE DETECTOR. |
| [Symbol] | SPRINKLER RISER FLOW SWITCH. |
| [Symbol] | SPRINKLER RISER TAMPER SWITCH. |
| [Symbol] | NEW DEVICE. |
| [Symbol] | RELOCATED DEVICE. |
| [Symbol] | EXISTING DEVICE. |
| [Symbol] | CAMERA. |
| [Symbol] | BUTTON. |
| [Symbol] | TV OUTLET. |
| [Symbol] | PLUG/GRID. |



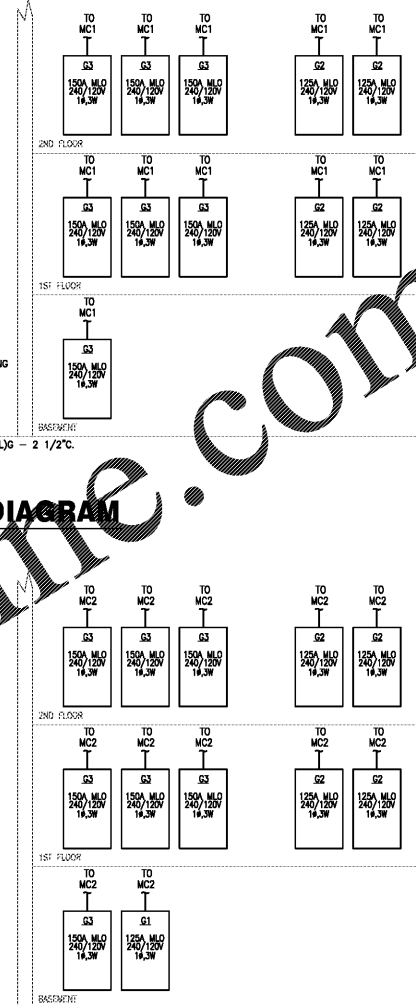
NOTES AND SPECIFICATIONS:

- CONTRACTOR SHALL VISIT THE SITE AND THOROUGHLY FAMILIARIZE HIMSELF WITH EXISTING CONDITIONS. NO ALLOWANCE WILL BE SUBSEQUENTLY MADE IN HIS BEHALF BECAUSE OF ANY ERROR ON HIS PART RELATED TO ABSENCE OF KNOWLEDGE ABOUT THE WORK OR THE SITE.
- CONTRACTOR SHALL FURNISH ALL LABOR, MATERIALS, AND EQUIPMENT. PAY ALL FEES AND COSTS SHALL OBTAIN ALL PERMITS, APPROVALS, AND INSPECTIONS TO PROVIDE A COMPLETE ELECTRICAL INSTALLATION.
- CONTRACTOR SHALL COORDINATE WITH ALL UTILITIES. CONTRACTOR SHALL PAY ALL ASSOCIATED COSTS FOR TEMPORARY AND PERMANENT POWER.
- ALL ELECTRICAL INSTALLATIONS TO COMPLY WITH NATIONAL AND LOCAL CODES AND TO BE INSTALLED IN A FIRST CLASS WORKMANLIKE MANNER.
- ALL ITEMS INSTALLED PER THESE DRAWINGS SHALL BE NEW AND U.L. LABELED AND LISTED FOR THEIR SPECIFIC USE.
- WORK SHALL BE GUARANTEED FOR A PERIOD OF ONE (1) YEAR FROM THE DATE OF OCCUPANCY (O.C.). ALL ELECTRICAL EQUIPMENT AND SYSTEMS SHALL BE TESTED AND BALANCED FOR PROPER OPERATION AND FAULT FREE UPON DELIVERY TO OWNER.
- LOCATIONS SHOWN ARE APPROXIMATE. CONTRACTOR SHALL DETERMINE ACTUAL LOCATIONS WITH OTHER TRADES. THESE DRAWINGS ARE GENERALLY DIAGNOSTIC IN NATURE.
- ANY RENOVATION WORK OF EXISTING INSTALLATIONS INCLUDED IN THESE DRAWINGS IS BASED ON INFORMATION PROVIDED TO THE ENGINEER AND THE ENGINEER'S FIELD OBSERVATIONS. CONTRACTOR SHALL NOTIFY THE ENGINEER OF ANY DISCREPANCIES FOUND IN THE EXISTING INSTALLATION AND THE WORK SHOWN IN THESE DRAWINGS THROUGH ACCESSIBLE TO THE BEST OF HIS KNOWLEDGE AND SCOPE OF WORK.
- ALL ELECTRICAL EQUIPMENT SHALL BE IDENTIFIED WITH PERMANENT LABELS. EXTERIOR LABELS SHALL BE WEATHERPROOF.
- PANELBOARDS SHALL BE SIGNAL TO SQUARE DIECAST ALUMINUM, BOLT-ON BREAKERS, 20" MINIMUM WIDTH. SEE PANELBOARD SCHEDULES FOR ADDITIONAL REQUIREMENTS.
- ALL 150V AND ABOVE AIR CIRCUIT BREAKERS SHALL BE SWITCH DUTY RATED. ALL BREAKERS SERVING HVAC EQUIPMENT SHALL BE HACR RATED. MULTI-POLE BREAKERS SHALL HAVE COMMON TRIP ELEMENT.
- PANELS SHALL BE MOUNTED WITH NO OPEN SPACES OR KNOCK-OUTS. PANELS SHALL NOT HAVE CABINETS OR BUSSES MOUNTED UPSIDE DOWN.
- PANELS SHALL HAVE NEAREST POLE SPACES AND COMPLETED, CORRECT PANEL SCHEDULE.
- CONDUCTORS SHALL BE COPPER, TYPE THHN/THWN 600V, 75°C. MINIMUM WIRE SIZE IS #12 AWG.
- WHEN PVC CONDUIT IS USED, PROVIDE AN ADDITIONAL EQUIPMENT GROUNDING CONDUCTOR.
- WIRE CONDUIT, WIRE, OR EQUIPMENT SIZES AND TYPES ARE NOT SHOWN, THEY SHALL BE IN ACCORDANCE WITH NEC REQUIREMENTS.
- EQUIPMENT, CONDUIT, AND DEVICES ON UNFINISHED WALLS ARE EXPOSED UNLESS NOTED OTHERWISE. CONDUIT AND DEVICES ON STUO OR FURRED WALLS SHALL BE CONCEALED OR RECESSED.
- EXPOSED AND ABOVE CEILING BRANCH CIRCUITRY SHALL BE THIN COPPER INSTALLED IN EMT RACEWAY WITH STEEL SET SCREW FITTINGS.
- IN WALLS AND ABOVE CEILING, LIGHTING BRANCH CIRCUITRY MAY BE ACCOMPLISHED WITH A FLEXIBLE BRING SYSTEM COMPLETE WITH ALL FITTINGS AND ACCESSORIES AS MANUFACTURED BY LITHONIA LIGHTING OR EQUAL LISTED FOR FLENUM USE.
- UTILIZE TYPE MC CABLE FOR BRANCH CIRCUITRY IN WALLS AND ABOVE CEILING.
- SIZE CONDUCTORS AS NECESSARY TO MEET VOLTAGE DROP REQUIREMENTS OF N.E.C.
- PROVIDE #8 COPPER GROUND CONDUCTOR AT TELEPHONE BACKBOARD. CONNECT TO BUILDING STEEL.
- CIRCUITS TO ROOF SHALL BE ROUTED WITHIN RTU CURB.
- METALLIC ELECTRICAL BOXES SHALL BE INSTALLED SO THERE IS A 24" MIN. HORIZONTAL SEPARATION WHEN BOXES ARE LOCATED ON OPPOSITE SIDES OF A RATED WALL. THE OPENING BETWEEN THE BOX AND THE WALLBOARD SHALL NOT EXCEED 1/8".
- COORDINATE WITH ARCHITECT OR OWNER FOR COLOR AND FINISH OF DEVICES AND COVERPLATES.



| LIGHT FIXTURE SCHEDULE | | | |
|------------------------|---|-------------|--------------|
| TYPE | DESCRIPTION | LAMPS | WATTS/VOLTS |
| A | LED 2X4 UTILITY SURFACE MOUNT PANEL | LED | 55W 120V |
| B | LED 8' UTILITY STRIP | LED | 55W 120V |
| C | LED VANITY-4 LIGHT | LED | 72W 120V |
| D | LED 6" DOWNLIGHT, SURFACE MOUNT, DAMP LOCATION LISTED | LED | 25W 120V |
| F | EXTERIOR LED UNIT SCENCE | LED | 25W 120V |
| XC | COMBO EXIT/EMERGENCY LIGHT | LED | 5W 120V |
| UA | CEILING FAN WITH LIGHT KIT | (3) 32W TRT | 114W 120V |
| UB | VANITY-4 LIGHT | (4) 32W TRT | 152W 120V |
| UC | CEILING MOUNT | (1) 32W TRT | 38W 120V |
| UC1 | CEILING MOUNT W/SHOWER LENS | (1) 32W TRT | 38W 120V |
| UD | SMALL PENDANT FIXTURE | (1) 32W TRT | 38W 120V |
| UE | EXTERIOR UNIT SCENCE | (1) 32W TRT | 38W 120V |
| UG | 1'X4' SURFACE MOUNT FLUORESCENT | (2) F32T8 | 62W 120V |
| UH | DUAL HEAD EXTERIOR WALL PACK | LED | 150W 120V |
| UI | EXTERIOR CEILING MOUNT | (2) F32T8 | 62W 120V |
| UJ | EXTERIOR WALL PACK, 9' AFF | LED | 60W 120V |
| UM | EXTERIOR UNIT SCENCE | (1) 32W TRT | 38W 120V |

NOTES:
1. VERIFY CEILING TYPES AND PROVIDE MOUNTING HARDWARE/ACCESSORIES/FIXTURE OPTIONS NECESSARY FOR INSTALLATION.
2. EXTERIOR FIXTURES SHALL BE DAMP OR WET LOCATION LISTED AS REQUIRED.
3. LAMPS SHALL BE INCLUDED AND INSTALLED IN ALL FIXTURES UNLESS NOTED OTHERWISE.



Pate Design Group, Inc.
Architecture / Interiors
4168 Abbotts Bridge Road
Duluth, Georgia 30097
(p) 770.814.0885
(f) 770.814.0886
kiry@patedesigngroup.com

G-1 AND G-2
WISTERIA RIDGE
Will-O-War LLC
75 North Main Street
Watkinsville, GA 30677

Issue & Revisions:

| No. | Date | Description |
|-------|--------|---------------|
| REV 1 | 040119 | CLARIFICATION |

NOTES AND LEGEND

Drawn
TSL
Checked
TSL
Contract No.
Scale
AS SHOWN

G-E2.1
03-05-19 of sheets

RELEASED FOR CONSTRUCTION