



Pate Design Group, Inc.
 Architecture / Interiors
 4168 Abbotts Bridge Road
 Duluth, Georgia 30097
 (p) 770.814.0885
 (f) 770.814.0886
 Kirby@patedesigngroup.com

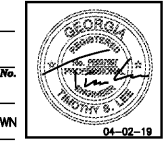
G-1 AND G-2
 WISTERIA RIDGE
 Will-O-War LLC
 75 North Main Street
 Watkinsville, GA 30677

Issue & Revisions:

No.	Date	Description
REV 1	040119	CLARIFICATION

UNIT AND BASEMENT ELECTRICAL PLANS

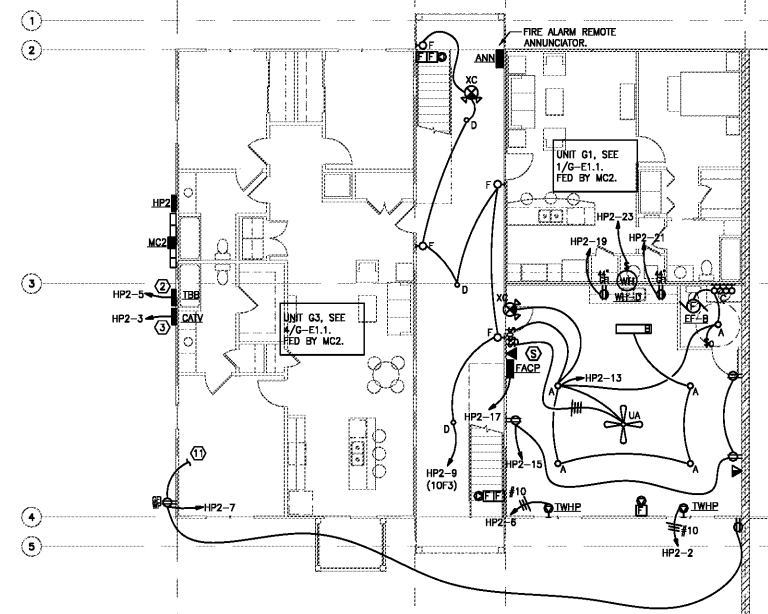
Drawn
 TSL
 Checked
 TSL
 Contract No.
 Scale
 AS SHOWN



G-E1.1
 03-05-19 of sheets

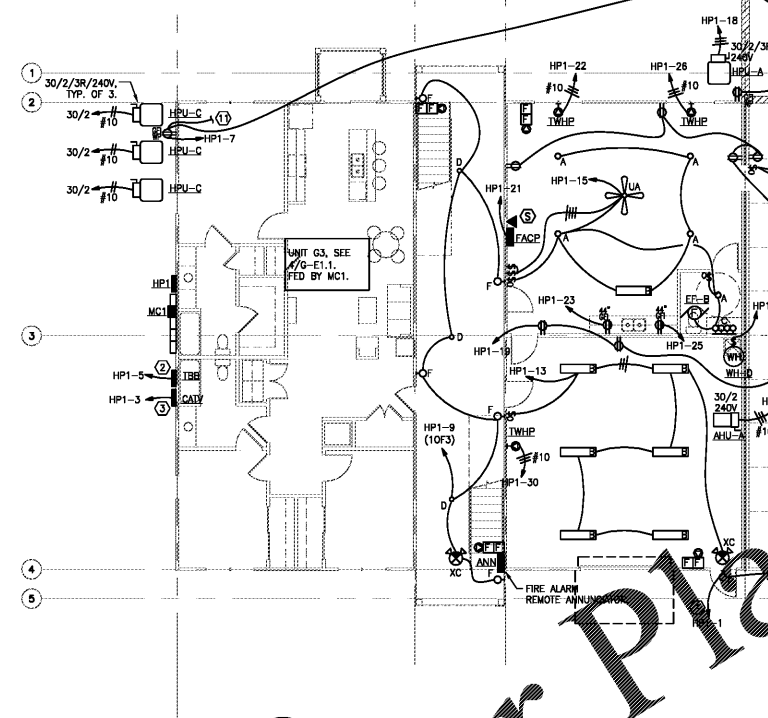
6790 Abbotts Bridge Road - Suite 401
 Johns Creek, GA 30097
 Georgia#PE037597
 LAB19130

RELEASED FOR CONSTRUCTION

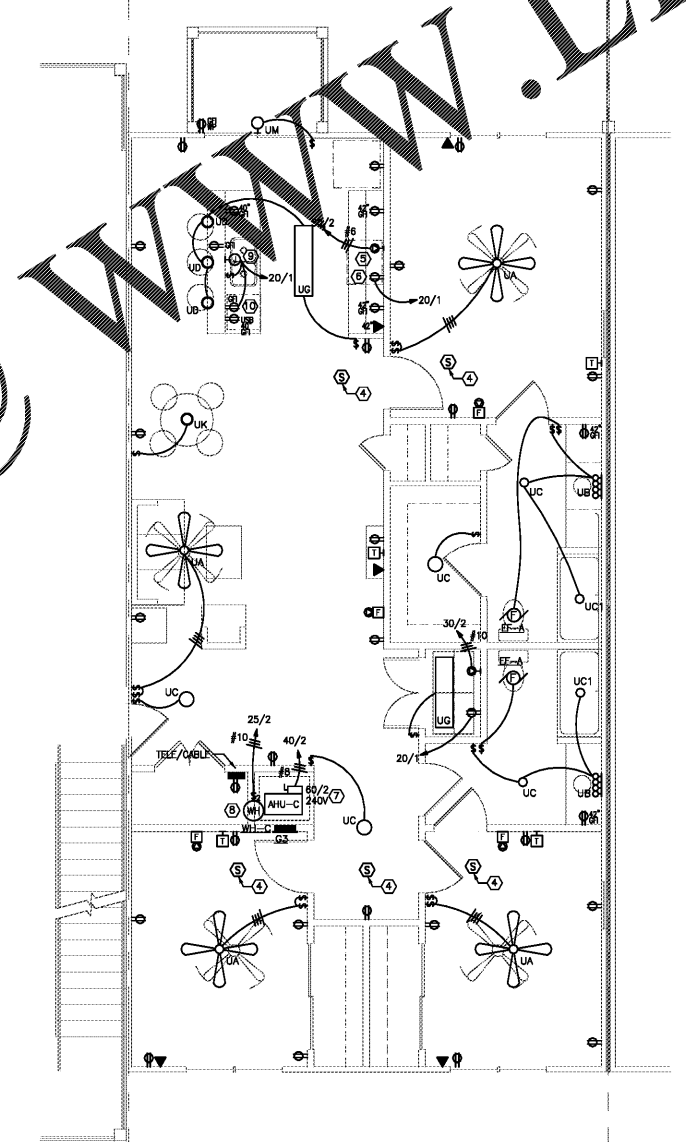


3 UNIT G2 PLAN
 G-E1.1 SCALE: 1/4" = 1' - 0"

1 UNIT G1 PLAN
 G-E1.1 SCALE: 1/4" = 1' - 0"



5 BASEMENT ELECTRICAL PLAN
 G-E1.1 SCALE: 1/4" = 1' - 0"



4 UNIT G3 PLAN
 G-E1.1 SCALE: 1/4" = 1' - 0"

2 NOT USED
 G-E1.1 SCALE: 1/4" = 1' - 0"

CONDENSING UNIT CONN. SCHEDULE

UNIT	CONDUCTORS	DISCONNECT SWITCH
HPU-A	2#12 + 1#12G - 1/2" C.	30/2/F20/3R
HPU-B	2#10 + 1#10G - 1/2" C.	30/2/F25/3R
HPU-C	2#10 + 1#10G - 1/2" C.	30/2/F30/3R

NOTE: COORDINATE LOCATION AND INSTALLATION REQUIREMENTS OF CONDENSING UNITS WITH MECHANICAL CONTRACTOR PRIOR TO ROUGH-IN.

KEY NOTES:

- CONNECT HOMERUN VIA INTERIOR LIGHTING CONTACTOR. PROVIDE UNSWITCHED HOT CONDUCTOR (BYPASS CONTACTOR) TO EMG/EXIT LIGHT FIXTURES AS SHOWN.
- TELEPHONE CABINET. (2) 4" PVC WITH PULLSTRING TO PROPERTY LINE. COORDINATE STUB-UP LOCATION WITH TELEPHONE COMPANY PRIOR TO INSTALLATION.
- CABLE TV CABINET. (2) 4" PVC WITH PULLSTRING TO PROPERTY LINE. COORDINATE STUB-UP LOCATION WITH CABLE COMPANY PRIOR TO INSTALLATION.
- 120V SMOKE DETECTOR WITH BATTERY BACKUP AND AUDIBLE SIGNAL. PROVIDE AUXILIARY CONTACT TO ACHIEVE SIMULTANEOUS OPERATION OF ALL SMOKE DETECTORS IN THE UNIT.
- CONNECT ELECTRIC RANGE VIA NEMA 6-50R RECEPTACLE AT 18" AFF.
- CONNECT RANGE EXHAUST HOOD/MICROWAVE VIA NEMA 5-20R RECEPTACLE AT 60" AFF.
- CONNECT AIR HANDLER VIA DISCONNECT SWITCH MOUNTED AT UNIT. MAINTAIN WORKING CLEARANCE AS REQUIRED PER NEC.
- CONNECT WATER HEATER VIA 30A/2P SWITCH AT 48" AFF. MAINTAIN WORKING CLEARANCE AS REQUIRED PER NEC.
- CONNECT DISPOSAL VIA J-BOX MOUNTED BELOW SINK. STRAP FLEX CONNECTION BETWEEN J-BOX AND DISPOSAL TO CABINET.
- CONNECT DISHWASHER VIA NEMA 6-20R RECEPTACLE AT 18" AFF.
- CONNECT TO GR/MP RECEPTACLE AT EACH HPU CLUSTER. COORDINATE LOCATIONS WITH MECHANICAL.

GENERAL UNIT NOTES:

- PROVIDE AUXILIARY CONTACT IN SMOKE DETECTORS TO ACHIEVE SIMULTANEOUS SYNCHRONOUS OPERATION OF ALL DETECTORS IN THE UNIT UPON ACTIVATION OF ANY ONE DETECTOR IN THE UNIT.
- PROVIDE AND INSTALL ELECTRICAL DEVICES IN ALL UNITS AS INDICATED ON THESE TYPICAL UNIT PLANS. CONNECT ALL DEVICES AS INDICATED ON THESE PLANS, WIRING SCHEDULES, PANEL SCHEDULES, AND PER THE NEC.
- VERIFY INSTALLATION REQUIREMENTS OF ALL MECHANICAL EQUIPMENT WITH MECHANICAL CONTRACTOR. ADJUST CIRCUIT BREAKER, CONDUCTOR, RACEWAY, AND DISCONNECT SIZES AS REQUIRED BY EQUIPMENT NAMEPLATE.
- COORDINATE LOCATION OF TELEPHONE J-BOXES AND CATV SPLITTER BOXES WITH THE RESPECTIVE UTILITIES PRIOR TO ROUGH-IN AND INSTALLATION.
- ELECTRICAL OUTLET BOXES SHALL NOT BE INSTALLED BACK TO BACK WITHIN THE SAME STUD SPACE.
- BRANCH CIRCUIT CONDUCTORS SHALL BE COPPER, #14 AWG MINIMUM FOR 15A CIRCUITS, #12 AWG MINIMUM FOR 20A CIRCUITS, OR AS NOTED ON THE PLANS OR SCHEDULES.
- PROVIDE WHITE DCOOR TYPE FINISH FOR ALL RECEPTACLES, SWITCHES, TELEPHONE JACKS, ETC.
- VERIFY HEIGHT AND LOCATION OF RECEPTACLES MOUNTED ABOVE COUNTER IN KITCHEN. COORDINATE INSTALLATION WITH CABINETRY. RECEPTACLES TO BE INSTALLED PER NEC REQUIREMENTS.
- VERIFY INSTALLATION REQUIREMENTS OF EQUIPMENT AND DEVICES PRIOR TO ROUGH-IN. COORDINATE INSTALLATION WITH GENERAL CONTRACTOR.
- ADJACENT DEVICES SHALL BE GANGED TOGETHER UNDER A COMMON COVERPLATE.
- COORDINATE THE LOCATION AND INSTALLATION OF TELEPHONE AND CATV CABLES AND DEVICES WITH THE RESPECTIVE UTILITIES PRIOR TO ROUGH-IN.
- PROVIDE TAMPER-RESISTANT RECEPTACLES FOR ALL NONLOCKING-TYPE 125-VOLT, 15A AND 20A RECEPTACLES IN SWELLING UNIT AREAS.
- ALL NON-SWITCHED GENERAL RECEPTACLES, SMALL APPLIANCE RECEPTACLES, AND REFRIGERATION RECEPTACLES IN THE KITCHEN, PANTRY, BREAKFAST ROOM, DINING ROOM, OR SIMILAR AREA SHALL BE CONNECTED TO ONE OF THE TWO 20A KITCHEN RECEPTACLE BRANCH CIRCUITS AS INDICATED ON THE LOADCENTER SCHEDULE.

Order Plans @

WWW.LDILLING.COM