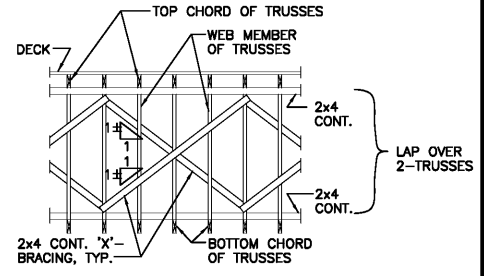


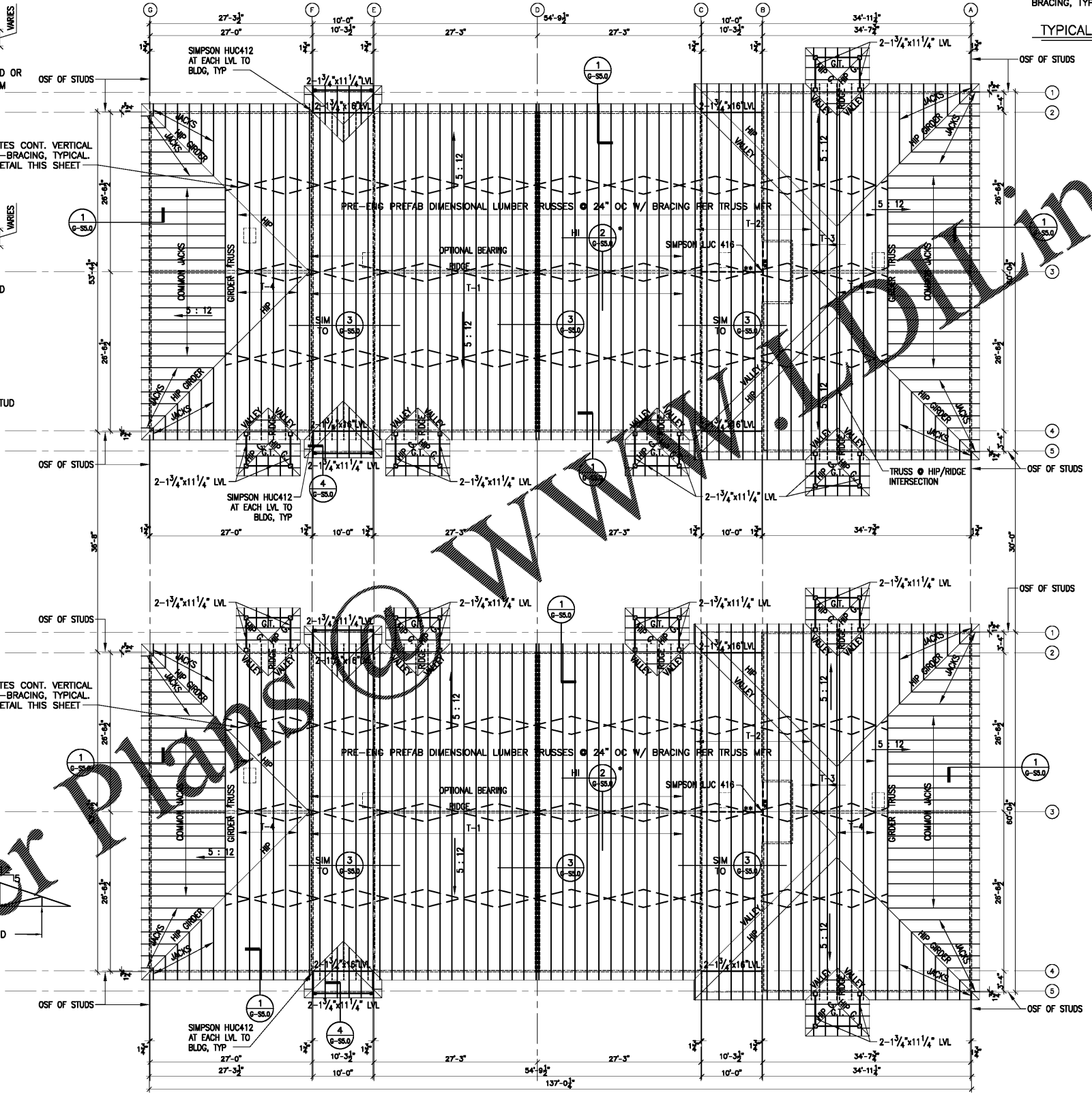
NOTE: MAXIMUM DEFLECTIONS FOR ALL TRUSSES SHALL BE:  
DEAD PLUS LIVE-----L/240  
LIVE LOAD ONLY-----L/360

- NOTES:**
- TOP & BOTTOM CHORDS OF TRUSSES SHALL BE 2x6 MIN.
  - PROVIDE PANEL POINTS IN TRUSSES @ 8'-0" O.C. MAX. & PANEL POINTS IN HIP JACKS & GIRDER TRUSSES @ 8'-0" O.C. MAX.
  - COORDINATE ALL TRUSS DIAGRAMS W/ ARCH. DRAWINGS.
  - COORDINATE TRUSS PANEL POINTS WITH MECHANICAL DUCT WORK. SEE MECHANICAL DRAWINGS.
  - DESIGN SPECIAL TRUSSES WHERE MECHANICAL DUCT WORK REQUIRES SEPARATION OF TRUSSES (34" O.C. MAX.)
  - PROVIDE 2x6 BLOCKING @ 24" O.C. MAX. BETWEEN TOP & BOTTOM CHORD OF TRUSSES WHERE TRUSSES ARE SEPARATED.
  - THE GENERAL CONTRACTOR SHALL BE RESPONSIBLE FOR COORDINATION ALL TRUSS PROFILES AND DIMENSIONS WITH ARCHITECTURAL, MECHANICAL, AND OTHER DRAWINGS
  - PROVIDE CONTINUOUS 2x6 BLOCKING AT ALL HIPS, RIDGES, VALLEYS, CHANGES IN DECK DIRECTION, AND ALL OTHER UNSUPPORTED DECK EDGE CONDITIONS BETWEEN TRUSSES OR OTHER FRAMING WITH 2-16d EACH END, TYPICAL



**TYPICAL 'X'-BRACING DETAIL**

NOTE: BRACING SHOWN THUS SHALL BE INSTALLED IN ADDITION TO THE BRACING REQUIRED BY THE TRUSS DESIGN ENGINEER AND TRUSS DRAWINGS, TYPICAL



**ROOF CONSTRUCTION**  
5/8" THICK APA RATED PLYWOOD DECK, EXPOSURE 1, WITH PANEL IDENTIFICATION INDEX OF 40/20 OVER PRE-ENGINEERED PREFABRICATED DIMENSIONAL LUMBER TRUSSES & JACKS @ 24" O.C. MAXIMUM, OR CLOSER SPACING IF/AS REQUIRED BY TRUSS DESIGN ENGINEER.

- PROVIDE 2-2x TOP PLATE & CONNECTOR, REQ'D BY TRUSS SHOP DRAWINGS IF OPTIONAL BEARING EMPLOYED
- 2-1 3/4"x11 1/4" LVL OPTIONAL BEARING

**ROOF FRAMING PLAN**  
1/8" = 1'-0"

AUBURN STRUCTURAL DESIGN, INC.  
ROY H. MAYO, JR. P.E.  
2008 JANABROCKE LN  
AUBURN, AL 36830  
(334) 826-8040  
engineer@aststructure.com  
www.aststructure.com



**Pate Design Group, Inc.**  
Architecture / Interiors  
4168 Abbotts Bridge Road  
Duluth, Georgia 30097  
(p) 770.814.0885  
(f) 770.814.0886  
kirby@patedesigngroup.com

**G-1 AND G-2**  
**WISTERIA RIDGE**  
Will-O-War LLC  
75 North Main Street  
Watkinsville, GA 30677

**Issue & Revisions:**

No.	Date	Description
1	07-03	CLARIFICATION

**ROOF FRAMING PLAN**

AS NOTED

**G-S2.3**

RELEASED FOR CONSTRUCTION